

ITEM	PART#	DESCRIPTION	QTY	UOM
A	510210400	PicoBlade1.25 Rec Hsg 4P	1	PC
B	500588000	PicoBlade1.25 Crimp Rec Term Chain Tin	4	PC
C	--	Blank label 12.7x35.5mm (WHT:12.7mm) HF	1	PC
D	510470400	PicoBlade1.25 Plug Hsg 4P	1	PC
E	501338000	PicoBlade1.25 Crimp Plug Term Chain	4	PC

FROM	TO	DESCRIPTION	COLOR
A1	D4	CABLE 28 AWG UL 1061 BLACK	BLACK
A2	D3	CABLE 28 AWG UL 1061 BLACK	BLACK
A3	D2	CABLE 28 AWG UL 1061 BLACK	BLACK
A4	D1	CABLE 28 AWG UL 1061 BLACK	BLACK

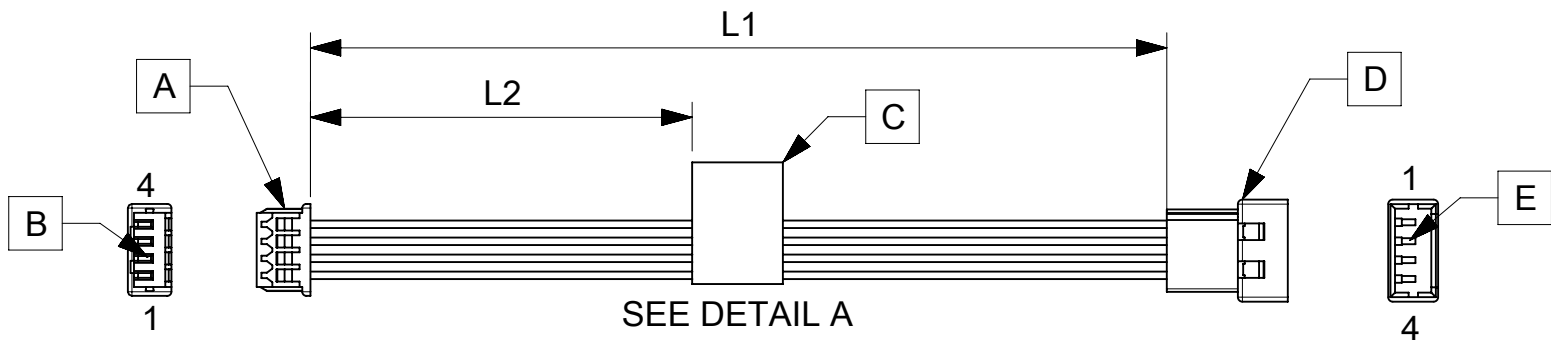
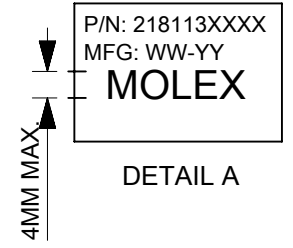


TABLE			
PART NUMBER	L1	L2 (REF)	TITLE
2181130400	75±5	30	4 CIRCUIT PICOBLADE R:P CABLE 75MM
2181130401	150±6	70	4 CIRCUIT PICOBLADE R:P CABLE 150MM
2181130402	225±6	105	4 CIRCUIT PICOBLADE R:P CABLE 225MM
2181130403	300±8	145	4 CIRCUIT PICOBLADE R:P CABLE 300MM
2181130404	425±8	205	4 CIRCUIT PICOBLADE R:P CABLE 425MM



- NOTES
1. Cable assembly to be tested 100% for continuity and polarity.
 2. Connector view shown is from mating side.
 3. Label text must be 2mm max. in height with Arial font.
 4. Label must be wrapped in flag type on the cables.

REVISION			
DATE	REV	DESCRIPTION	CHANGER
04/03/2021	A	INITIAL RELEASE	ARAJU

DOCUMENT STATUS	P1	RELEASE DATE	2021/03/26	04:03:47
-----------------	----	--------------	------------	----------

FUNCTIONAL SYMBOLS $\frac{E}{A} = 0$ $\frac{E}{E} = 0$ $\frac{E}{P} = 0$ DIVISIONAL SYMBOLS	DIMENSION UNITS: mm SCALE: NTS CURRENT REV DESC: EC NO: 659320 DRWN: ARAJU 2021/03/04 CHK'D: RDESAI01 2021/03/26 APPR: RDESAI01 2021/03/26			
	GENERAL TOLERANCES (UNLESS SPECIFIED) ANGULAR TOL ± ° 4 PLACES ± 3 PLACES ± 2 PLACES ± 1 PLACE ± 0 PLACES ±	SEE TABLE PRODUCT CUSTOMER DRAWING		
	DRAFT WHERE APPLICABLE MUST REMAIN WITHIN DIMENSIONS	THIRD ANGLE PROJECTION	DRAWING: A4-SIZE	SERIES: 218113
	INITIAL REVISION: DRWN: ARAJU 2021/03/04 APPR: RDESAI01 2021/03/26		DOCUMENT NUMBER: 2181130400	DOC TYPE: PSD DOC PART: 000 REVISION: A
MATERIAL NUMBER: SEE TABLE		CUSTOMER: GENERAL MARKET		SHEET NUMBER: 1 OF 1