

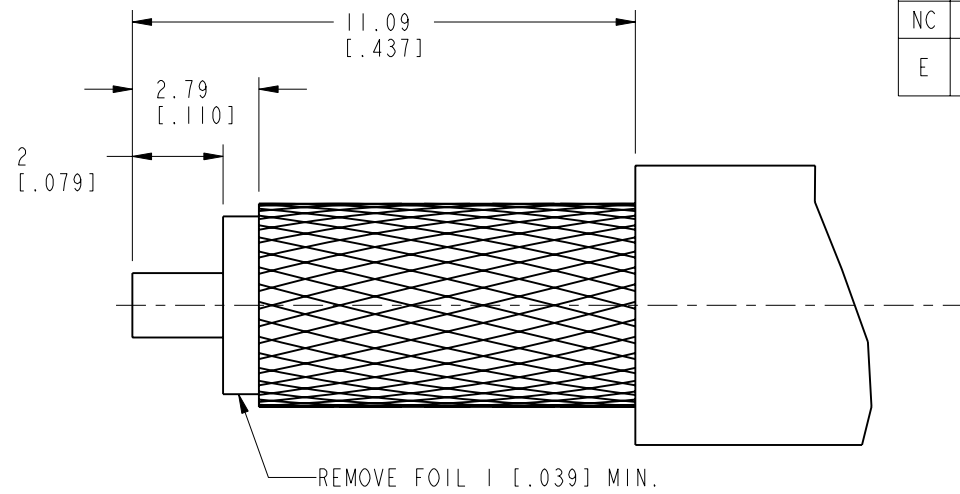
NOTES:

1. MATERIALS AND FINISHES:
  - BODY, BARREL, & SLEEVE - BRASS, WHITE BRONZE PLATING
  - FERRULE - COPPER, WHITE BRONZE PLATING
  - CONTACT - BRASS, GOLD PLATING
  - OUTER CONTACT - PHOSPHOR BRONZE, WHITE BRONZE PLATING
  - INSULATOR - PTFE, NATURAL
2. ELECTRICAL:
  - A. IMPEDANCE: 50 OHM
  - B. FREQUENCY RANGE: DC - 6 GHz
  - C. DIELECTRIC WITHSTANDING VOLTAGE: 1000 VRMS, MIN.
3. MECHANICAL:
  - A. DURABILITY: 100 CYCLES MIN.
  - B. TEMPERATURE RANGE: -40° C TO +85° C
4. PACKAGING:
  - A. QUANTITY: SINGLE PACK
  - B. MARKING: BAG TO BE MARKED "AMPHENOL RF, 134104, AND DATE CODE"
5. RECOMMENDED CABLE ASSEMBLY INSTRUCTIONS:
  - A. TRIM CABLE AS SHOWN.
  - B. SOLDER CABLE CENTER CONDUCTOR TO CONTACT.
  - C. INSERT CABLE WITH FOIL ENTERING CONNECTOR AND BRAID OVER KNURL.
  - D. CRIMP FERRULE OVER BRAID WITH .255" HEX DIE.

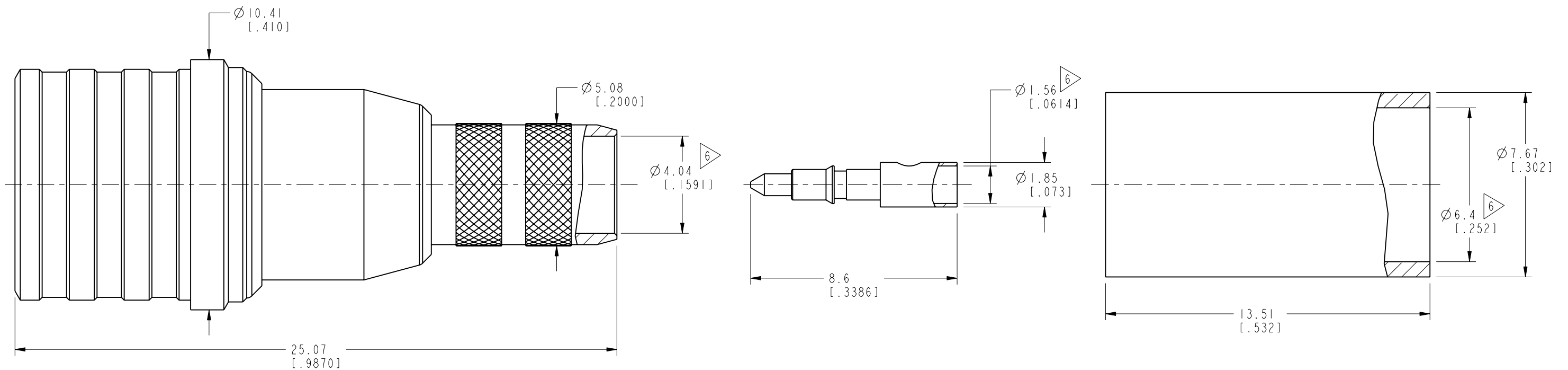
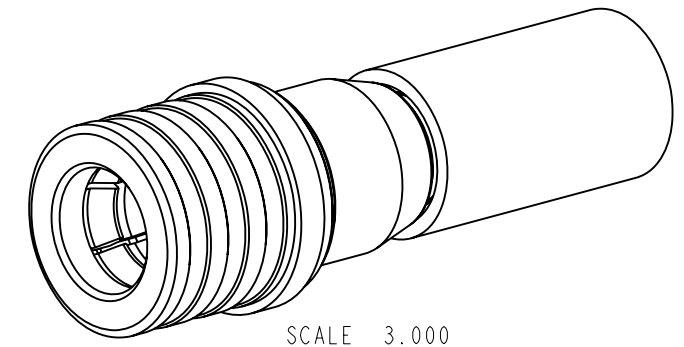
6. SHOWS CABLE ENTRY DIMENSIONS.

THIRD ANGLE PROJ.

REVISIONS				
REV	DESCRIPTION	DATE	ECO	APPR
NC	INITIAL RELEASE	07-Jun-11	-----	MZ
E	RE-DRAW IN PRO-E, REVISE BODY FOR ADDITIONAL INSULATOR RETENTION	19-Dec-16	02649	SH



RECOMMENDED CABLE STRIPPING DIM'S



**CUSTOMER OUTLINE DRAWING**

ALL OTHER SHEETS ARE FOR INTERNAL USE ONLY

UNLESS OTHERWISE SPECIFIED, DIMENSIONS ARE IN METRIC AND TOLERANCES ARE: <0.5mm ±0.05mm    0.5 - 6mm ±0.1mm    6 - 30mm ±0.2mm    30 - 120mm ±0.3mm    ANGLES ±1°	MATERIAL	DRAWN	DATE	TITLE		Amphenol RF www.amphenolrf.com
	SEE NOTES	M. ZHANG	16-Dec-16	QMA 50 OHM CRIMP PLUG (FOR LMR-240 CABLE)		
	REFERENCE	C. WANG	12-Jun-07	APPROVED	DATE	DRAWING NO. QMA1121A1-AT30GS-LMR240-50
	CONFIGURATION LEVEL: In Work	K. CAPOZZI	16-Dec-16	CAD FILE	SCALE: 6.0:1.0 SHEET 2 OF 2	ITEM NO. 701121AAAA1AR5F
FINISH				DWG SIZE B	REV E	PART NO. 134104