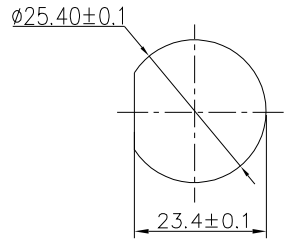
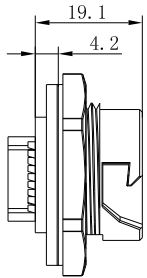


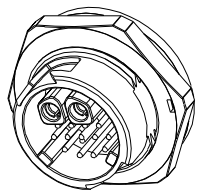
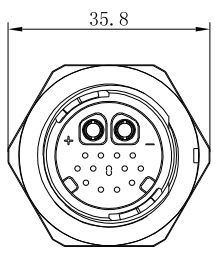
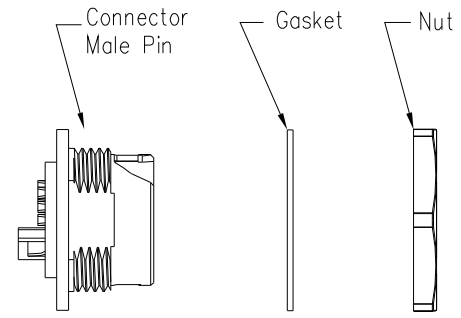
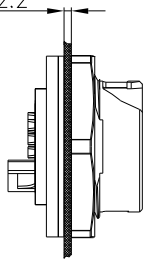
REV.	ECN NO.	DESCRIPTION	SIGN	DATE
C1	N/A	INITIAL DRAWING	Liu	2020/05/19



RECOMMENDED PANEL Cut-Out

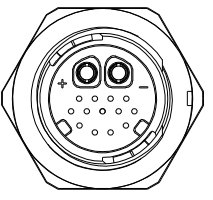


Panel T: Max 2.2



- Specification:
- 1.Operation Temperature: -45°C~105°C.
  - 2.Insulation Resistance: 100MΩ at DC500V.
  - 3.Contact Resistance: <10mΩ.
  - 4.Withstand Voltage: 2000V AC
  - 5.Operating Current: 20+5A
  - 6.Operating Voltage: AC 300V
  - 7.Waterproof Rate: IP67 (Mated)
  - 8.Housing: Nylon, Black
  - 9.Male Pin: Copper Alloy, Gold Plated
  - 10.Female Pin: Copper Alloy, Gold Plated
  - 11.Gasket: Silicon Gray
  - 12.Panel Nut: Nylon, Blue
  - 13.Torque Rate: 0.8~1.0N·m
  - 14.RoHS Compliant.
  - 15.Mating Cap P/N: 806-00058-00

22XXX635-01  
Pin Number



2+13 Pin

P/N: 24213635-01

Pin Assignments  
Front View

UNIT: mm TOLERANCE .X ±0.25 .XX ±0.15 .XXX ±0.05 ANGLES ±1°	DESCRIPTION			PART NO	24213635-01	DRAWN BY	Liu	DATE	2020/05/19	
	SCALE	1:1		SHEET	1 OF 1	DWG NO	CHECKED BY	Mo	DATE	2020/05/19
	REV.	C1		SIZE	A4	CUSTOMER	APPROVED BY	Adley	DATE	2020/05/19

THIS INFORMATION IS CONFIDENTIAL AND IS DISCLOSED TO YOU ON CONDITION THAT NO FURTHER DISCLOSURE IS MADE BY YOU TO OTHER THAN CHOGORI PERSONNEL WITHOUT AUTHORIZATION FROM CHOGORI CORP.