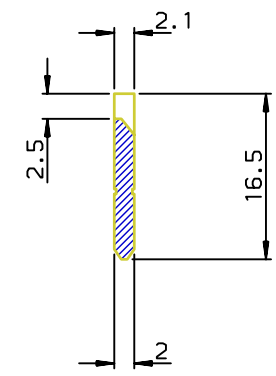


COUPE AA

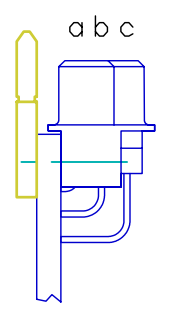


PACKAGING	REF:	Qty
PLASTIC BAG	SACHET 350X200	100
SHIPPING BOX	C2	1

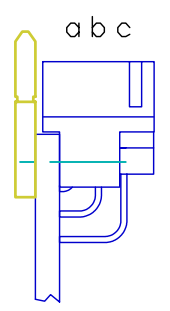
NOTE: RoHS INFORMATIONS

- The "LF" product meets European union Directives and other country regulations as described in GS-22-008.
- The product is not intended to be exposed to a manufacturing solder process.
- Packaging spec: see GS-14-920.

REVERSE FEMALE ( TYPE R )



STANDARD MALE ( TYPE C )



Recommended accessory :  
Screws and nuts : M 2.5 x 12

Part number **8609-153-003LF**

European Views

www.fciconnect.com		surface ISO 1302 ✓	tolerance std ISO 406 ISO 1101	projection mm
TOLERANCES UNLESS OTHERWISE SPECIFIED				
ANGULAR	LINEAR	0.X	±0.1	size A3
0.XX' ±2'		0.XX	±0.1	Scale 2
0.XX' ±2'		0.XXX	±0.1	ECN LS06-0139
Product family	DIN 8609	Spec ref	-	
<b>FCI</b>	<b>SEPARATE POLARIZING BAR</b>	dwg no	C-8609-1190	
title	for plug connectors	Rev.	C	
catalog no	-	CUSTOMER	sheet 1 of 1	

rev	ecn no	dr	date
A	LS05-0086	HLE	2005/10/12
B	LS06-0095	LGO	2006/06/28
C	LS06-0139	HLE	2006/09/22
-	-	-	-
-	-	-	-
-	-	-	-
-	-	-	-

Copyright FCI. FCI