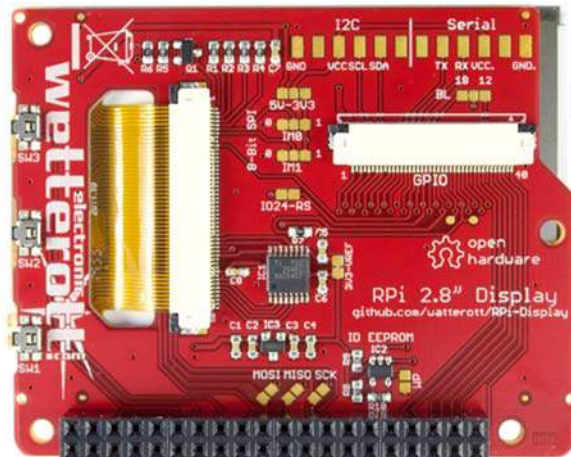
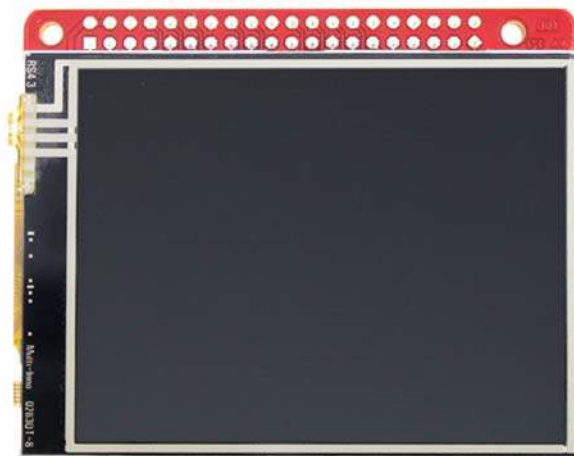




Pi Supply



RPi Display 2.8" TFT Touch Screen for Raspberry Pi Model A+, B+ and 2B

Extend your Raspberry Pi Model A+, B+ or 2B with a 2.8" full color display (320x240) with touch panel. There is a framebuffer driver available for this display, so you can use it right out of the box. A Display for the Raspberry Pi Model A and B can be found [here](#).

Specification:

- TFT-Display: 2.83", 240x320 (Transmissive)
- Viewing area: 43.2 x 57.6mm
- Touch Controller: TI ADS7846/TSC2046
- Backlight dimmable (PWM)
- Interface: SPI (Touch Controller + Display)

- 3 tactile switches
- GPIOs available via 40 pin FFC/ZIF-Connector
- Power: 5V
- Raspberry Pi Model B+ Pinout
- Fully assembled

RESOURCES You can find all information, sources and drivers on Github: github.com/watterott/RPi-Display

