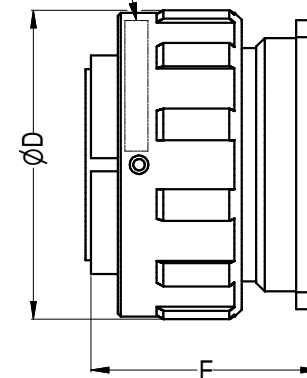
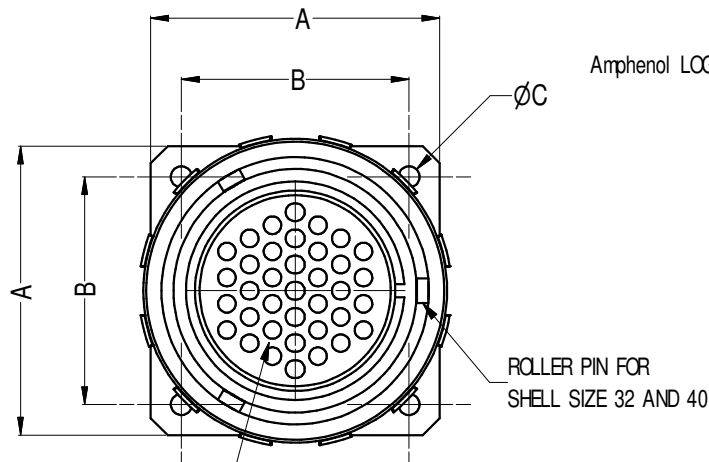


ISOMETRIC VIEW



CONTACT HOLES NOT SHOWN,  
FOR No OF CONTACTS REFER TO TABLE

Parts List, Dimensions in mm ( inches)								
ITEM	CATALOGUE P/ No	No OF CONTACT	A	B	C	DIA D	E	ROLLER PIN
1	MP-4164-13S	13	38.0	29.4	3.2	40.5	38.8	NO
2	MP-4164-19S	19	41.0	31.8	3.2	44.0	38.8	NO
3	MP-4164-25S	25	44.5	34.9	3.7	48.5	41.0	NO
4	MP-4164-37S	37	50.8	39.7	3.7	54.3	42.0	NO
5	MP-4164-54S	54	57.0	44.5	4.3	60.8	45.0	YES
6	MP-4164-85S	85	69.9	55.5	4.3	73.3	45.0	YES

5	CHANGE FINISH TO BLACK COATING	T.N	17/02/2006	8478
4	CHANGE FINISH NOTES ADD ROLLER PINS ON COUPLING NUT	T.N	09/09/2005	8422
3	CHANGE FINISH FROM PLATING TO COATING	L.V	16/04/2004	8277
2	SEE CHANGE NOTE 8272	T.N	15/03/2004	8272
1	REMOVE REFERENCE PART NUMBERS	T.N	16/09/2003	8214
0	FIRST ISSUE	T.N	28/02/2003	----
REV.	CHANGE DETAILS	BY	DATE	CHG No

### CUSTOMER DRAWING

#### NOTES:

- MATERIAL AND FINISH: DIE CAST ALUMINUM ALLOY, BLACK FINISH
- SUPPLIED WITH GOLD PLATED SOCKET CONTACTS

UNLESS OTHERWISE SPECIFIED TOLERANCE TO BE: LINEAR: X ± X.X ± X.XX ±		ANGULAR: X' ± 1' X'X' ± 30' X'X'X' ± 15'		THIS DOCUMENT IS THE PROPERTY OF AMPHENOL AUSTRALIA PTY. LTD. NO PART THEREOF MAY BE REPRODUCED AND USED WITHOUT THE PRIOR WRITTEN CONSENT OF THE OWNER				CAD FILE: 55010258000215		DRN: T.N	DATE: 28/02/2003	TITLE: PANEL RECP WITH SOCKET CONTACT	<b>Amphenol</b> Amphenol Australia Pty Ltd, 2 Freeways Blvd, Keysborough, Vic3173 DRAWING NO: 55010258-000-2 SHEET: 2/2
BREAK ALL SHARP EDGES AND REMOVE ALL BURRS		MATERIAL: SEE NOTE 1		DATE: 20/02/06		APP'D: P.M		DATE: 20/02/06		PART No: SEE TABLE		SIZE: A4	
DIMENSIONS IN MILLIMETRES				THIRD ANGLE PROJECTION		SCALE:		PART No: SEE TABLE		SIZE: A4			