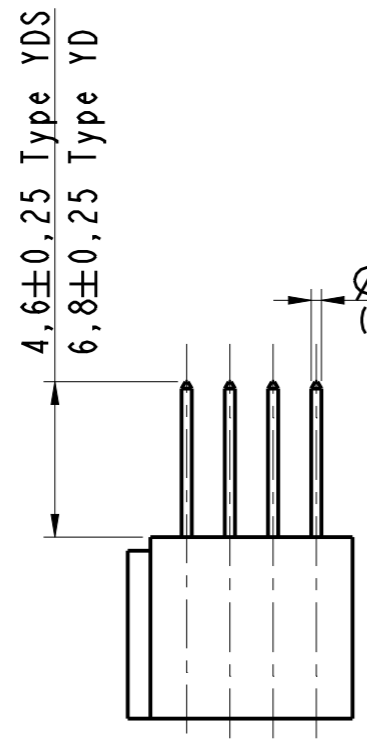
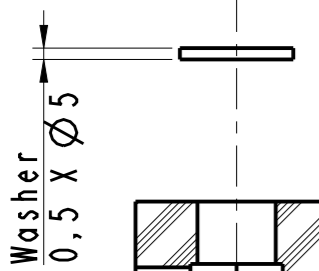
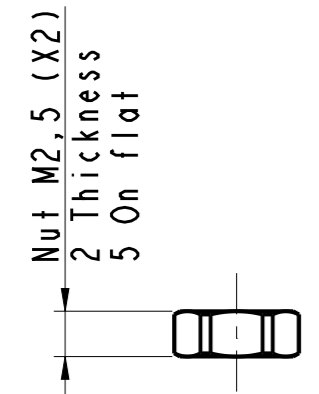
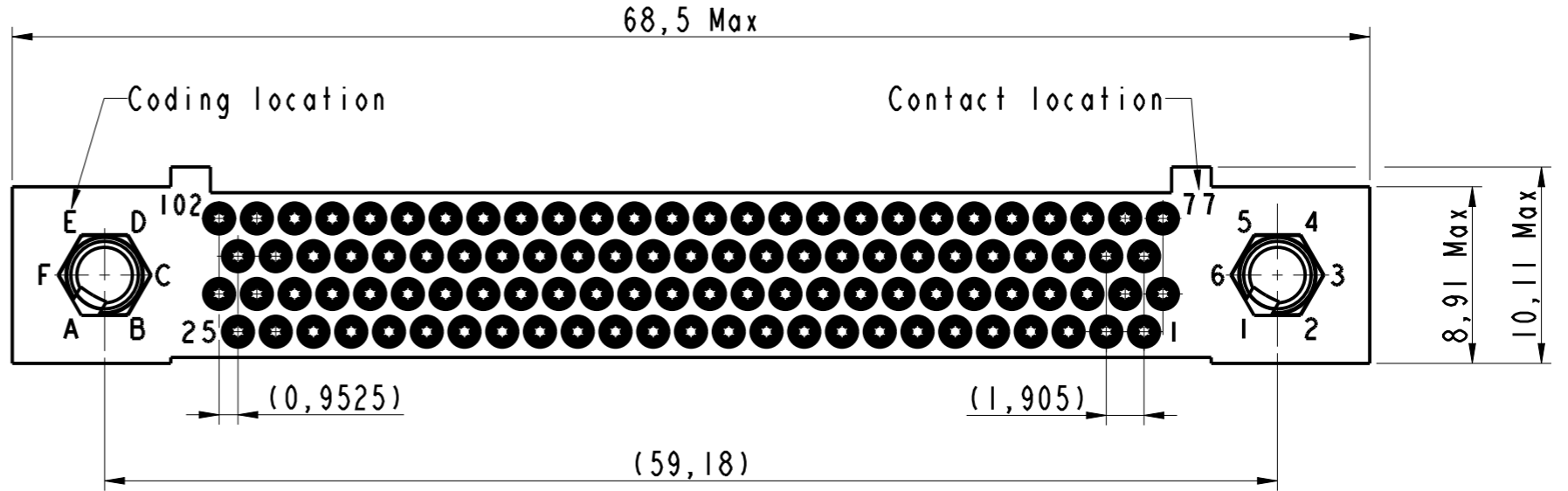
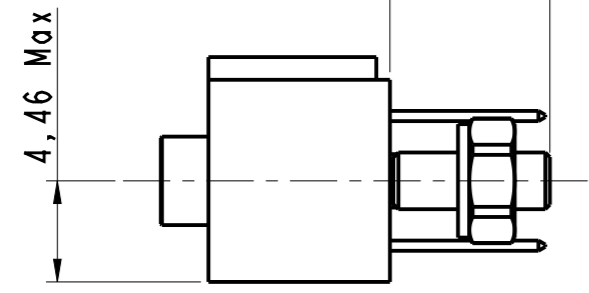
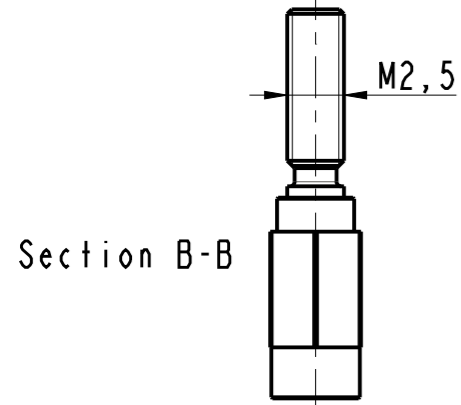
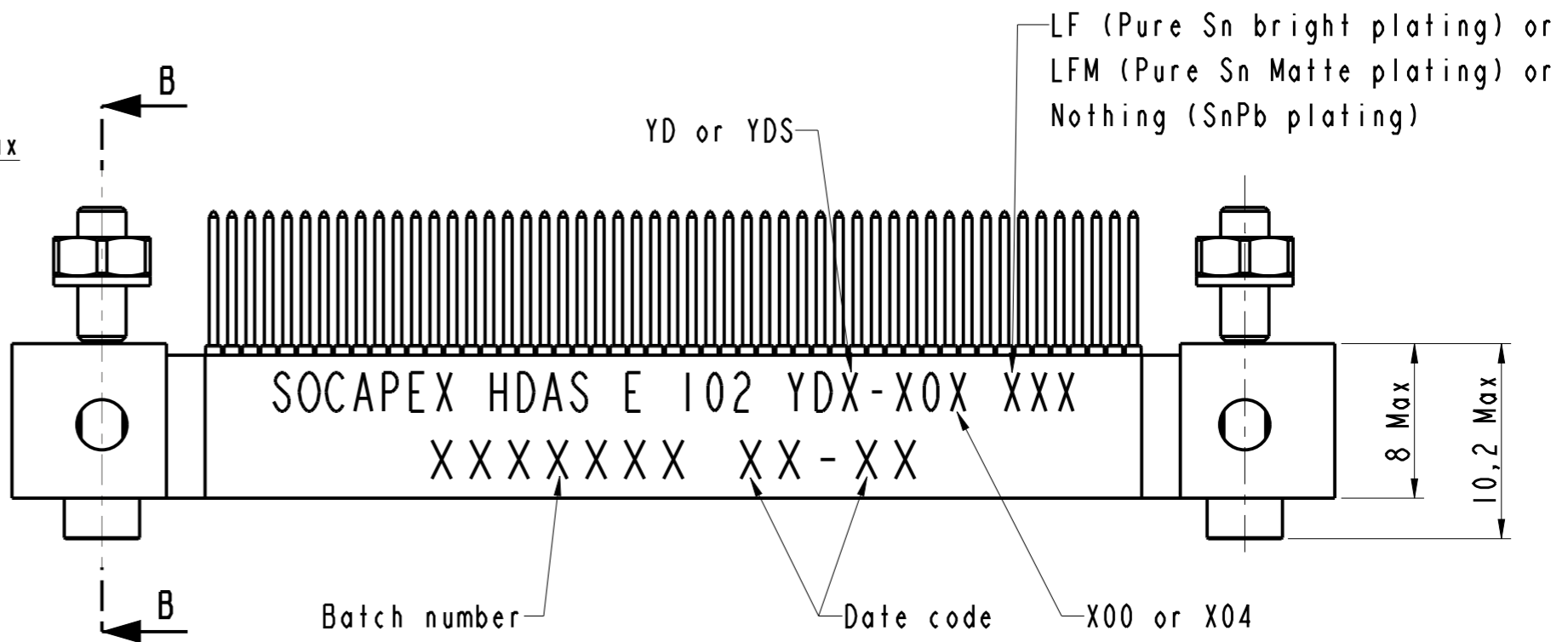


IN THE CONSTANT PURPOSE OF IMPROVING ITS PRODUCTS, AMPHENOL SOCAPEX RESERVES THE RIGHT TO MODIFY ANY DIMENSION OR CHARACTERISTICS.
FM.NPD.0036.THYEZ.PUNE rev C

7,15 ±0,2 deviation X00
5,5 ±0,2 deviation X04



View without fittings



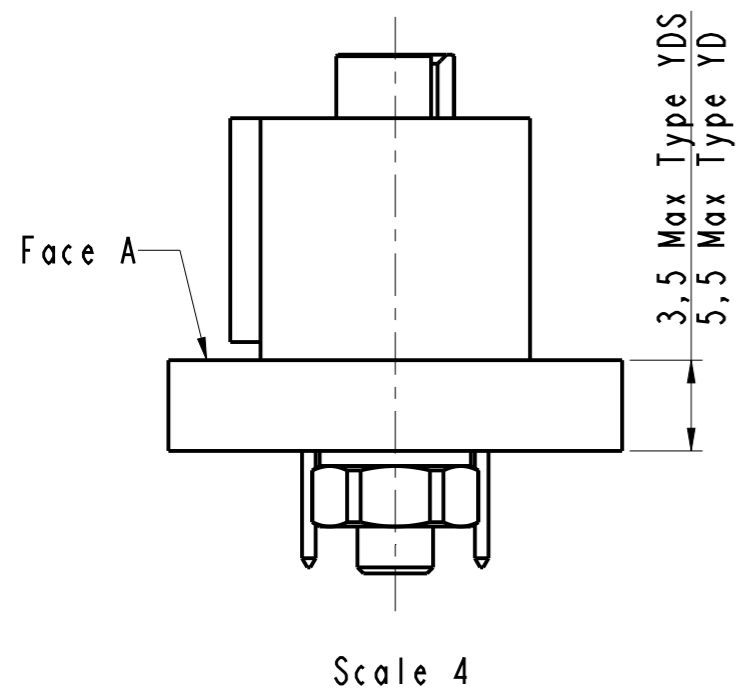
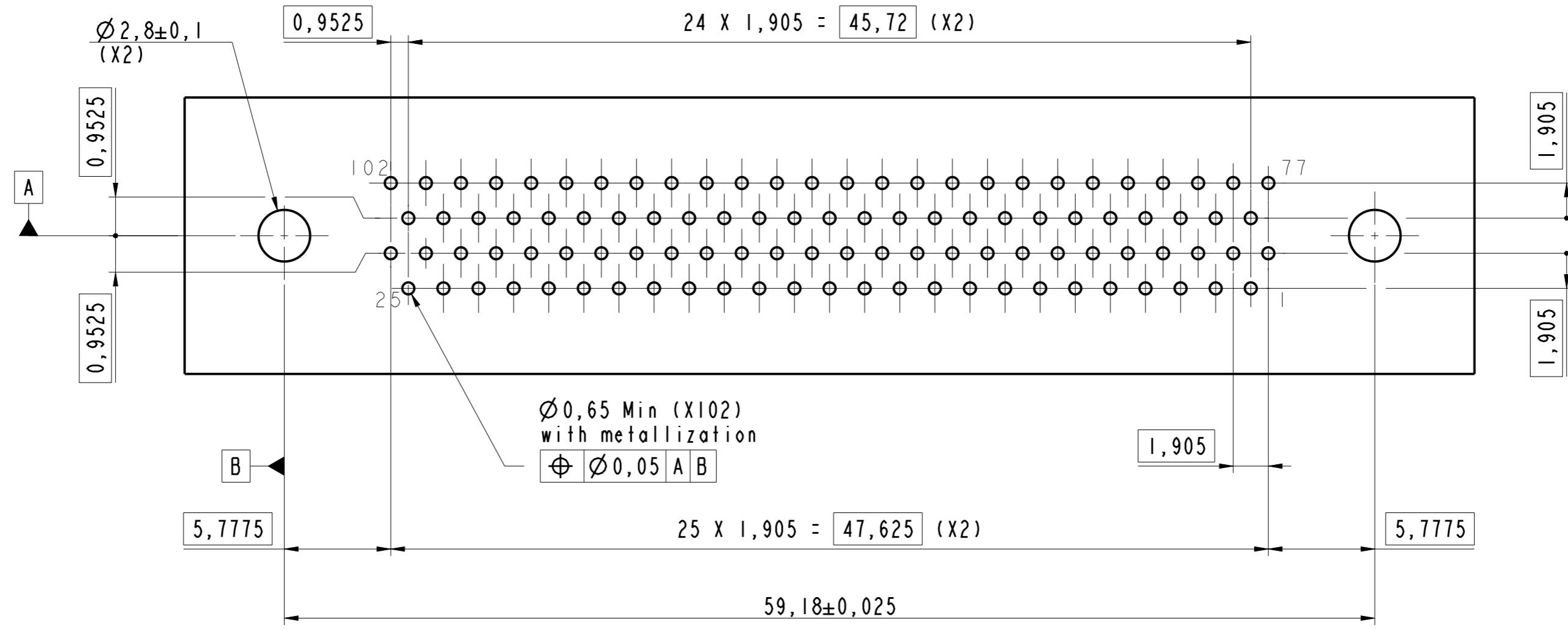
Section B-B

Notes:

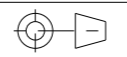
1. Part: HDAS E 102 YDX-X0X XXX
2. External dimensions of the receptacle insulator with 102 signal contacts type YDX
3. Connector delivered with fittings not assembled, coupling torque : 0,25 Nm
4. Standard 00X : Nickel plated over brass fittings.
Deviation 10X : Passivated stainless steel fitting

<h1>HDAS E 102 YDX-X0X XXX</h1>			
DRAWN BY: Gimenes		UPDATED BY: S Satpute	
LAST APPROVED BY: T Carrier			
ALL DIMENSIONS ARE IN MM	AMPHENOL SOCAPEX		ORIGINAL DRAWING DATE: 24/10/2005
			CONFIGURATION DATA ARE AVAILABLE IN PDM
SCALE: 3	B.P. 29 74311 THYZE CEDEX		REV: L PAGE: 1/2
			169-PLC-478-00

PCB Layout Face A



HDAS E 102 YDX-X0X XXX

DRAWN BY : Gimenes		UPDATED BY : S Satpute		LAST APPROVED BY : T Carrier	
ALL DIMENSIONS ARE IN MM		AMPHENOL SOCAPEX		ORIGINAL DRAWING DATE : 24/10/2005	CONFIGURATION DATA ARE AVAILABLE IN PDM
SCALE : 4				REV : L	PAGE : 2/2
		B.P. 29 74311 THYEZ CEDEX		169-PLC-478-00	

IN THE CONSTANT PURPOSE OF IMPROVING ITS PRODUCTS, Amphenol Socapex reserves the right to modify any dimension or characteristics.
 FM.NPD.0036.THYEZ.PUNE rev C