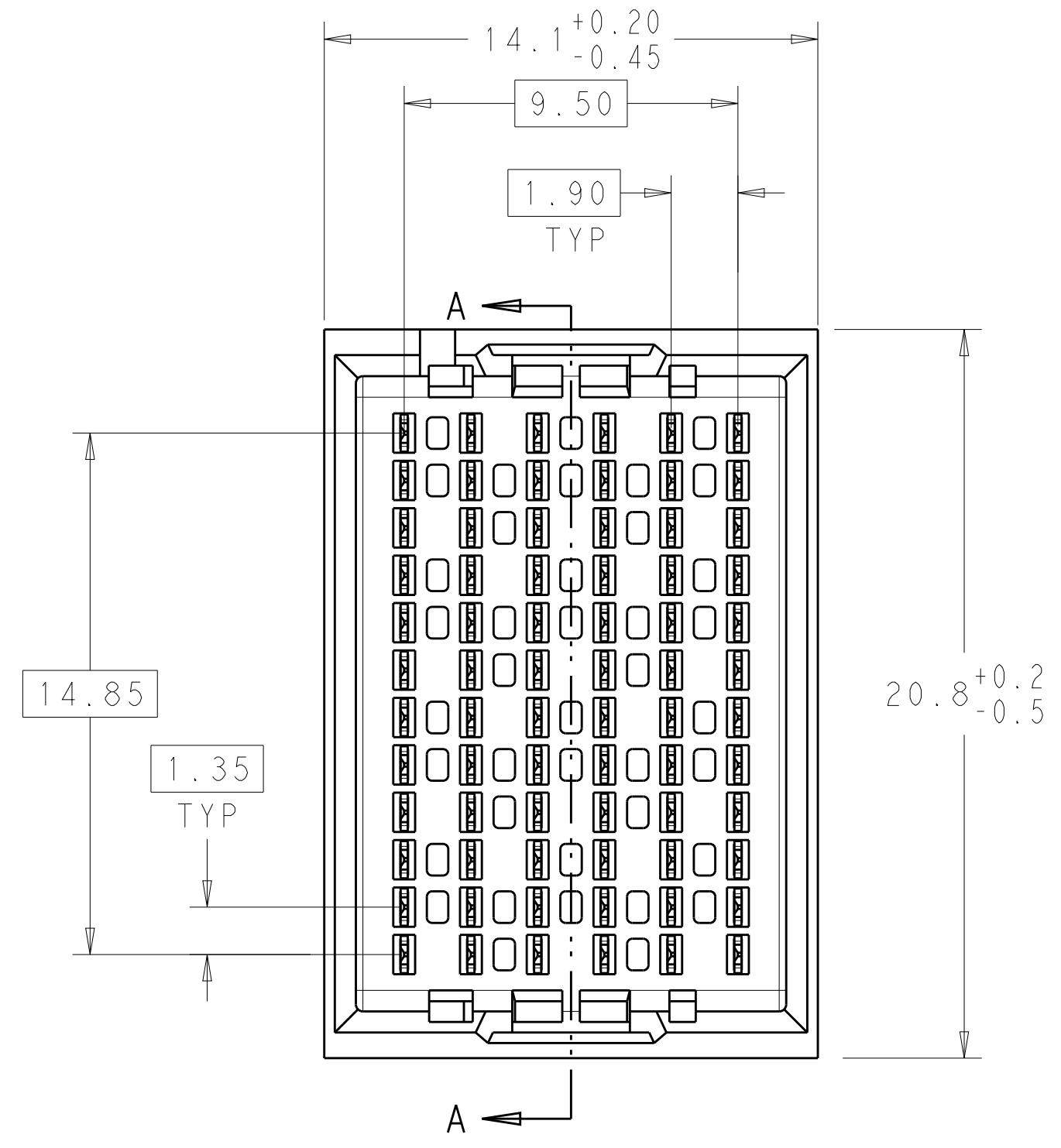
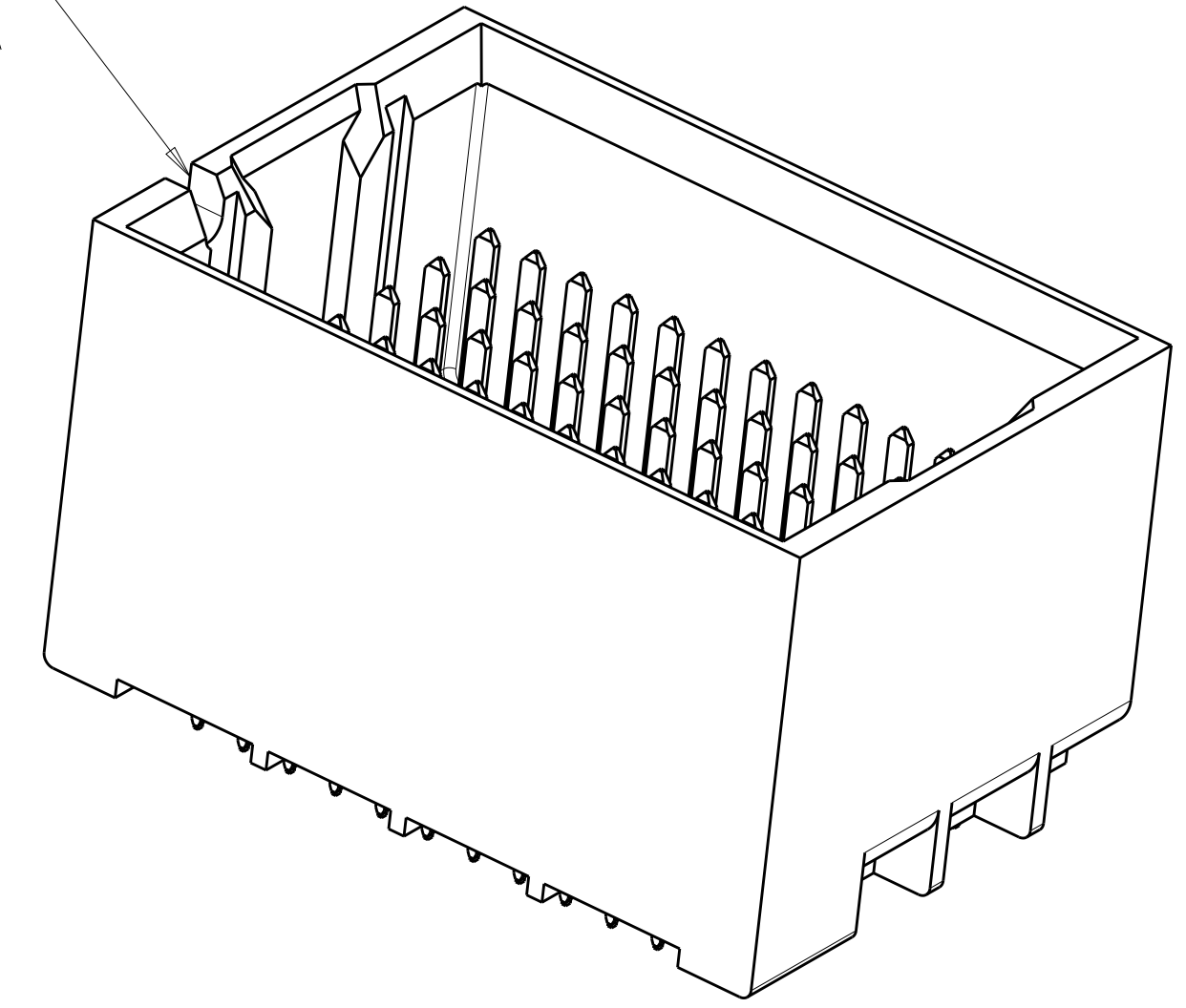


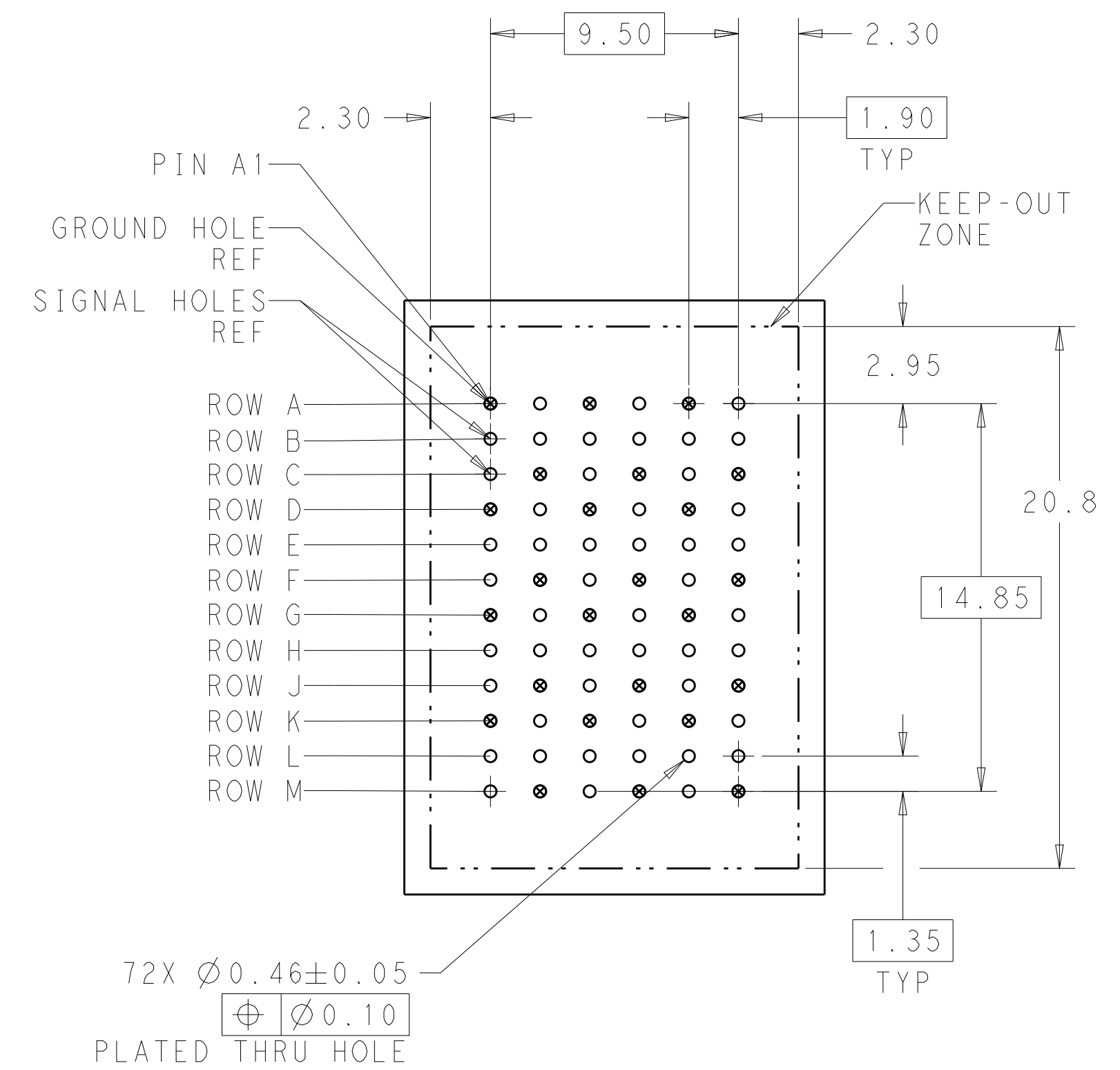
LOC		DIST		REVISIONS			
AD	00	P	LTN	DESCRIPTION	DATE	DWN	APVD
		A1		REVISED PER ECO-15-001494	06FEB2015	AP	DD



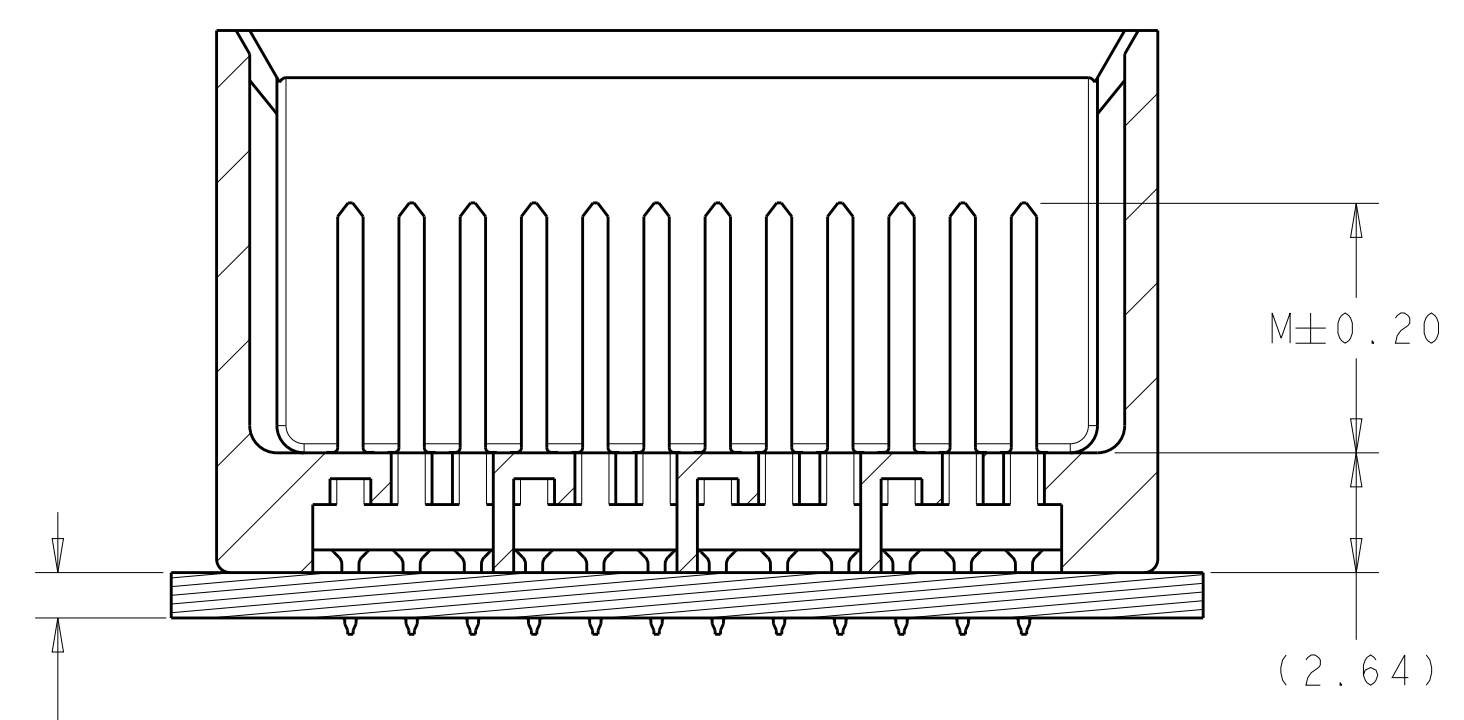
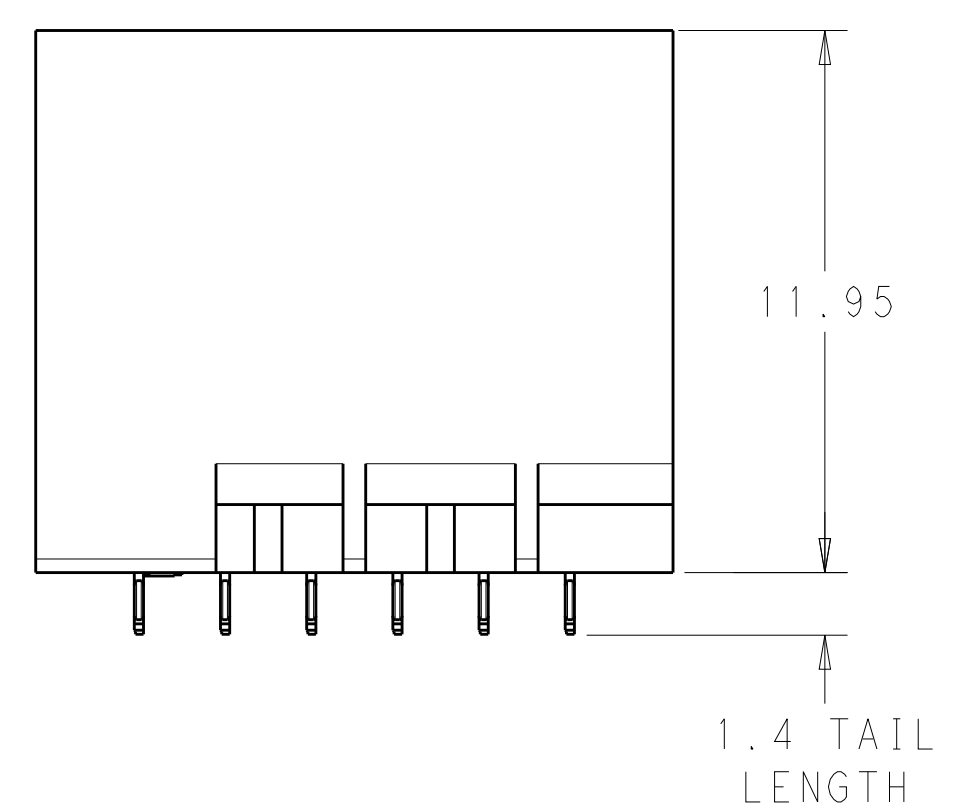
NOTCH DESIGNATES ROW A



⚠ MATERIAL:
 HOUSING: LCP, GLASS FILLED, UL94V-0.
 TERMINALS: HIGH PERFORMANCE COPPER ALLOY.
 ⚠ FINISH:
 30μ" MIN GOLD IN CONTACT AREA. SELECTIVE TIN ON PCB TAILS, NICKEL OVERALL.



UNGUIDED BACKPLANE HOLE PATTERN (CONNECTOR SIDE)



1.00 MINIMUM BOARD THICKNESS

SECTION A-A

THIS DRAWING IS A CONTROLLED DOCUMENT.		DWN R. GRZYBOWSKI 06JUN2011	TE Connectivity
DIMENSIONS: mm		CHK J. EARY 06JUN2011	
TOLERANCES UNLESS OTHERWISE SPECIFIED:		APVD J. EARY 06JUN2011	NAME: IMPACT, 4 PAIR, 6 COLUMN, HEADER PRODUCT SPEC: UNGUIDED, DUAL END WALL APPLICATION SPEC: SIGNAL MODULE, 0.46 PTH
0 PLC ± 1 PLC ±0.25 2 PLC ±0.13 3 PLC ± 4 PLC ± ANGLES ±		SIZE: A1 CAGE CODE: 2149984 DRAWING NO: 2149984	
MATERIAL: SEE TABLE		WEIGHT: -	RESTRICTED TO: -
FINISH: SEE TABLE		CUSTOMER DRAWING	SCALE: 6:1 SHEET 1 OF 2 REV: A1

THIS DRAWING IS UNPUBLISHED.	RELEASED FOR PUBLICATION	20
© COPYRIGHT 20	BY -	ALL RIGHTS RESERVED.

LOC	DIST	REVISIONS					
		P	LTN	DESCRIPTION	DATE	DWN	APVD
AD	00	-	-	SEE SHEET 1	-	-	-

FINISH	DIM M	PART NUMBER
\triangle	5.5	2149984-3
\triangle	4.9	2149984-2
\triangle	4.5	2149984-1

REFER TO WWW.TE.COM
FOR PRODUCT AVAILABILITY

THIS DRAWING IS A CONTROLLED DOCUMENT.		DWN R. GRZYBOWSKI 06JUN2011	
		CHK J. EARY 06JUN2011	
DIMENSIONS:		APVD J. EARY 06JUN2011	NAME IMPACT, 4 PAIR, 6 COLUMN, HEADER UNGUIDED, DUAL END WALL SIGNAL MODULE, 0.46 PTH
TOLERANCES UNLESS OTHERWISE SPECIFIED:		PRODUCT SPEC	
mm	0 PLC ±	APPLICATION SPEC	SIZE CAGE CODE DRAWING NO
	1 PLC ±0.25	RESTRICTED TO	A100779C=2149984
	2 PLC ±0.13	WEIGHT	CUSTOMER DRAWING
	3 PLC ±	SCALE	5:1
	4 PLC ±	SHEET	2
	ANGLES FINISH SEE TABLE	OF	2
		REV	A1