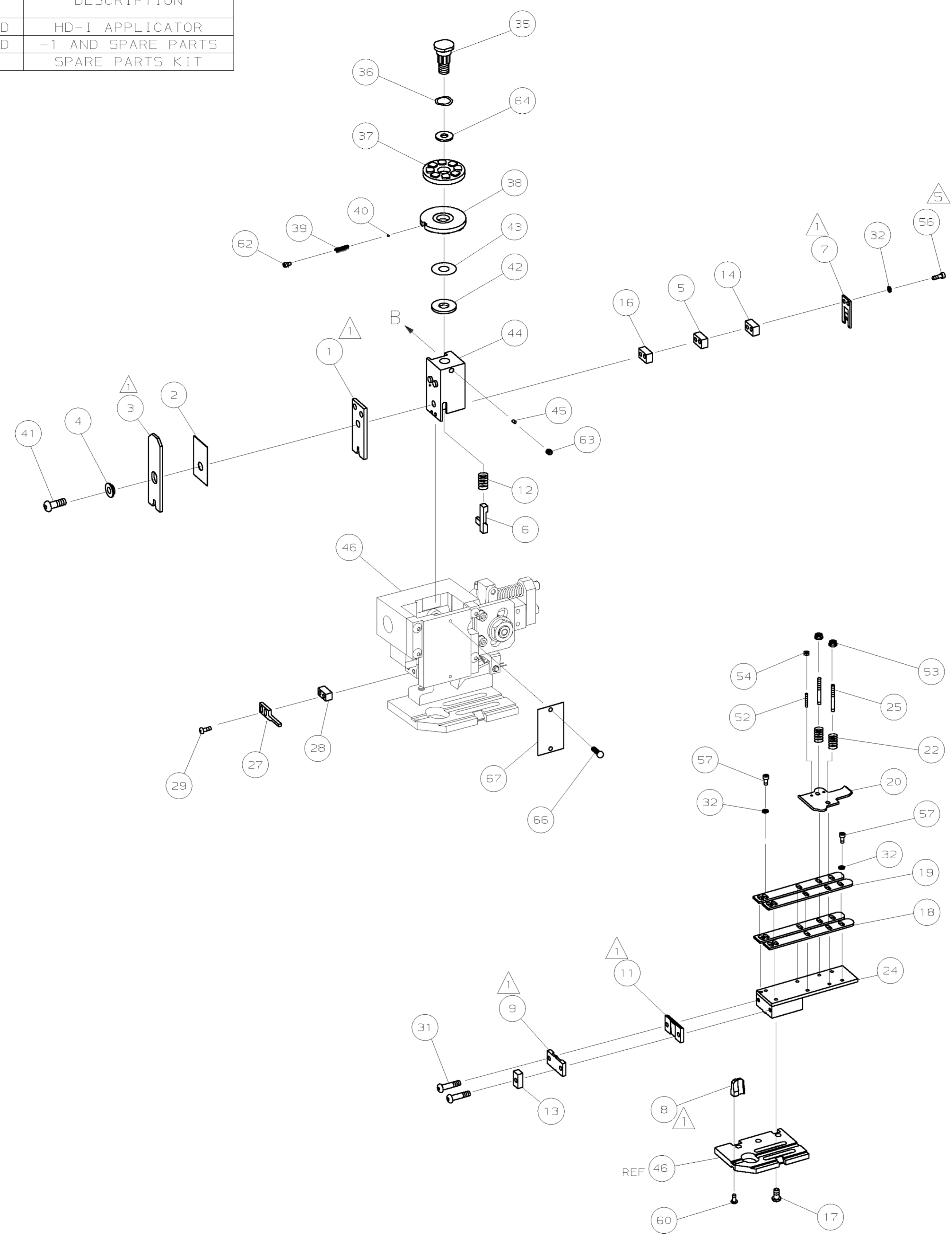


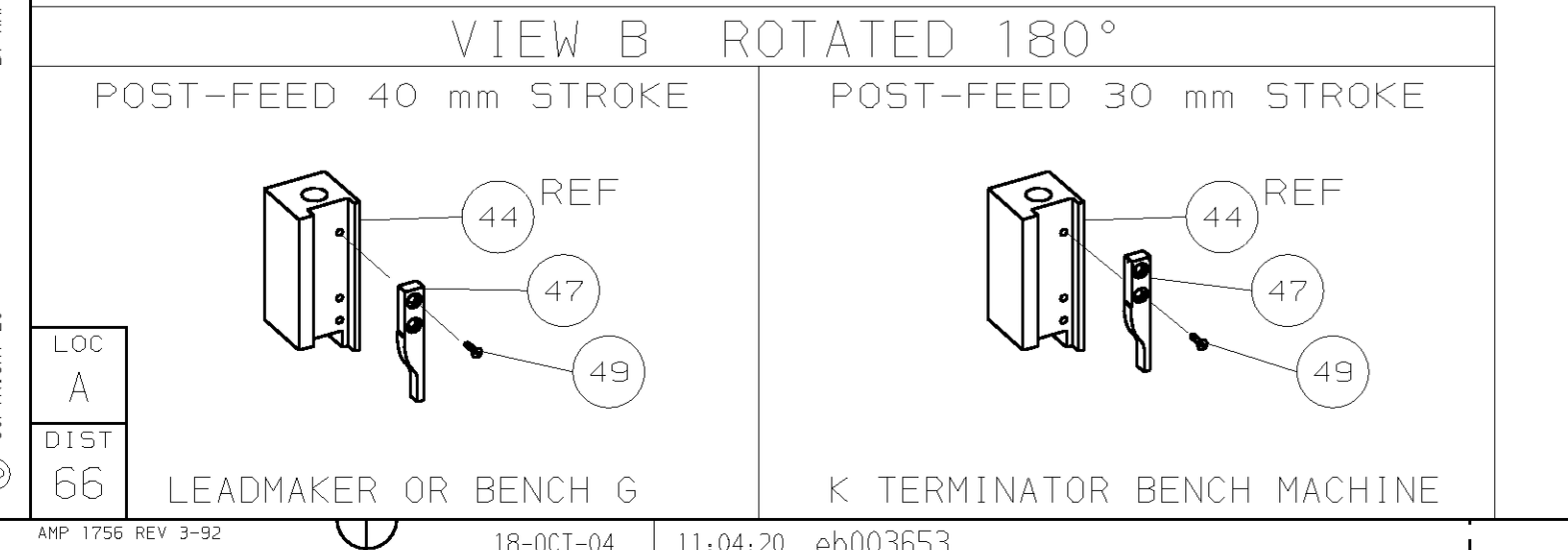
PART NUMBER	REV	FIRST USED	TERMINATOR	FEED TYPE	DESCRIPTION
1339756-1	A		BENCH & LEADMAKER	MECH POST FEED	HD-I APPLICATOR
7-1339756-1	A		BENCH & LEADMAKER	MECH POST FEED	-1 AND SPARE PARTS
7-1339756-7	A				SPARE PARTS KIT

CRIMP DATA ESCUBEDO TERMINAL AMP CRIMP SPECS				
TERMINAL NAME: RING TONGUE				
CRIMP	SIZE	TYPE	RANGE	
WIRE	5.08 [1.200 IN]	F	2.50mm <sup>2</sup> - 6.00mm <sup>2</sup>	
INSUL	7.11 [1.280 IN]	F	3.80-5.00 [1.150-.197 IN]	
WIRE STRIP LENGTH			APPL INSTRUCTION	
5.80-6.60 [1.228-.260 IN]			408-8323	
TERMINAL APPL SPEC		FEED		
-		33.00 [1.299 IN]		
TERMINALS APPLIED				
AMP PN	MFR PN	AMP PN	MFR PN	-
1572590-1	3560.00	1572590-5	3562.00	-
1572590-2	3560.02	1572590-6	3562.02	-
1572590-3	3560.30	1572590-7	3562.30	-
1572590-4	3560.32	1572590-8	3562.32	-
-	-	-	-	-
-	-	-	-	-
-	-	-	-	-
WIRE SIZE	CRIMP HEIGHT	PIN PN AND LENGTH [IN]		
mm <sup>2</sup> AWG				
6.00mm <sup>2</sup>	3.28 ±0.05 [1.129 ±.002 IN]	6-354778-8 [1.2835]		
4.00mm <sup>2</sup>	2.95 ±0.05 [1.116 ±.002 IN]	9-354778-7 [1.2980]		
2.50mm <sup>2</sup>	2.72 ±0.05 [1.107 ±.002 IN]	1-354779-8 [1.3080]		
-	-	-	-	-
-	-	-	-	-
-	-	-	-	-
-	-	-	-	-
-	-	-	-	-
-	-	-	-	-
-	-	-	-	-
-	-	-	-	-
-	-	-	-	-



-	1	1	1339756	PRINT, APPLICATOR LOG SHEET	73	
-	1	1	1338705-2	DOCUMENTATION PACKAGE	72	
-					70	
-					68	
-	1	1	461264-1	PLATE, IDENTIFICATION	67	
-	2	2	21017-2	SCR,DRIVE (#2X.19) ID PLATE	66	
-					65	
-	1	1	986950-1	WASHER, FLAT PRECISION	64	
-	1	1	3-18031-0	SCR,SKT SET (M6X6) RAM	63	
-	1	1	18023-9	SCR,SKT CAP (M4X6) CP D5C	62	
-					61	
-	1	1	18024-7	SCR,BHC (M4X10) ANVIL	60	
-					59	
-					58	
-	6	6	1-18023-1	SCR,SHC (M4X10) STRIP GUIDE	57	
-	2	2	1-18023-5	SCR,SHC (M4X25) SLUG BLADE	56	
-					55	
-	2	2	18029-1	NUT, HEX (M3) DRAG	54	
-	2	2	986965-1	NUT, HEX SL (M4) DRAG STUD	53	
-	2	2	2-18032-2	SCR,SKT SET (M3X10) DRAG	52	
-					51	
-					50	
-	1	1	18024-3	SCR,BHC (M3X10) CAM	49	
-					48	
-	1	1	1338676-1	CAM, POST-FEED 30 & 40 mm ST	47	
-	1	1	1338662-2	APPLICATOR, BASIC (SUBASSY)	46	
-	1	1	690191-1	PLUG, NYLON	45	
-	1	1	1333260-1	RAM	44	
-	1	1	690125-1	WASHER, LAMINATED	43	
-	1	1	1-690124-3	WASHER, RAM	42	
-	1	1	992285-2	SCREW,BHC (M8X25) CRIMPER	41	
-	1	1	23241-1	BALL, STEEL	40	
-	1	1	2-22278-7	SPRING, COMPRESSION	39	
-	1	1	1320922-1	DISC, INSULATION	38	
-	1	1	354777-1	WIRE DISC, PLASTIC	37	
-	1	1	22480-5	WASHER, SPRING	36	
-	1	1	690212-1	POST, RAM	35	
-					34	
-					33	
-	8	8	18025-2	WASHER, LOCK (M4) SHEAR BL	32	
-	2	2	4-18024-7	SCR,BHC (M4X25) SHEAR PL	31	
-					30	
-	2	2	18024-8	SCR,BHC (M4X12) STRIPPER	29	
-	1	1	2-690451-8	SPACER, STRIPPER	28	
-	1	1	2-576128-2	STRIPPER	27	
-					26	
-	2	2	1320906-1	DRAG, STUD	25	
-	1	1	1320995-1	PLATE, STRIP GUIDE	24	
-					23	
-	2	2	4-22281-1	SPRING, DRAG	22	
-					21	
-	1	1	1338665-1	DRAG, STOCK	20	
-	2	2	1338663-5	GUIDE, UPPER STRIP	19	
-	2	2	1333253-7	GUIDE, LOWER STRIP	18	
-	4	4	1-18024-8	SCR,BHC (M6X12) STRIP GD PL	17	
-	1	1	1338708-1	SPACER, SLUG BLADE	16	
-					15	
-	1	1	1-240641-7	SPACER, SLUG BLADE	14	
-	1	1	690481-1	SPACER, HOLD DOWN	13	
-	1	1	23846-1	SPRING, HOLD DOWN	12	
-	1	1	240644-1	PLATE, REAR SHEAR	11	
-					10	
-	1	1	690482-4	PLATE, FRONT SHEAR	9	
-	1	2	1	2-1333223-8	ANVIL	8
-	1	1	690474-4	BLADE, SLUG	7	
-	1	1	7-455892-7	HOLD DOWN, TERMINAL	6	
-	1	1	4-240641-4	SPACER, SLUG BLADE	5	
-	1	1	238009-7	SPACER, BLOCK CRIMPER	4	
-	1	2	1	5-456134-6	CRIMPER, INSULATION	3
-	1	1	1-455888-5	SPACER, CRIMPER	2	
-	1	2	1	1752057-4	CRIMPER, WIRE	1

- △ RECOMMENDED SPARE PARTS.
- 2. GREASE RAM, CAM, CAM FOLLOWER AND FEED ROD LIGHTLY.
- 3. LUBRICATE DAILY PER THE APPLICATOR INSTRUCTION SHEET SUPPLIED WITH THE APPLICATOR.
- △ CRIMP DATA CALCULATED BY TYCO LTD.
- △ CUT TO LENGTH AT ASSEMBLY.



PART NO		DESCRIPTION		ITEM NO
-77	-71	-1		
REVISION OF EACH ASSY NO (WHEN BLANK, USE DWG REVISION)				
PARTS LIST				
QTY RECD PER ASSY				
DIMENSIONS: mm [INCHES] MATL				
DO NOT SCALE PRINT.				
TOLERANCES UNLESS OTHERWISE SPECIFIED:				
1 PLC DEC ±				
2 PLC DEC ±				
3 PLC DEC ±				
ANGLES ±				
SURF TEXTURE: ✓				
REMOVE BURRS, BREAK SHARP EDGES TO .38 MAX				
DR	21SEP04	APP	21SEP04	
L.L.OFTHOUSE	F.BACKHURST			
CHK	REL	18OCT04		
AMP Tyco Electronics Harrisburg, PA 17105-3608				
NAME END FEED HD-I APPLICATOR				MACHINE REF HD-I APPL
SCALE	DWG NO	1339756	SHEET 1 OF 1	REV A
CAGE CODE 00779 CUSTOMER AND ASSEMBLY DRAWING				
RESTRICTED TO				

THIS DRAWING IS A CONTROLLED DOCUMENT.

LAYOUT L1339756

SET UP GAGE 458638-3

RELEASED FOR PUBLICATION BY AMP INCORPORATED. ALL RIGHTS RESERVED.

1339756