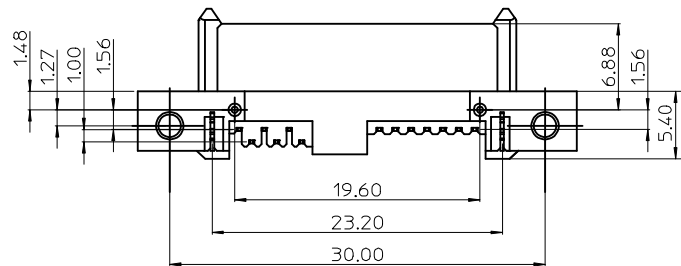
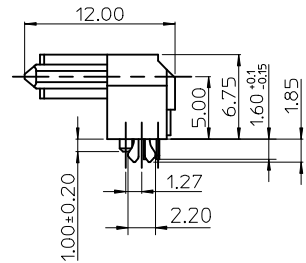
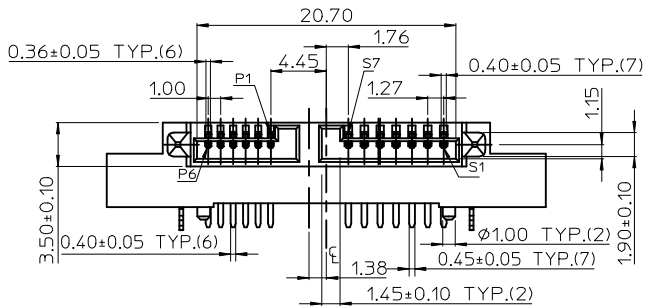
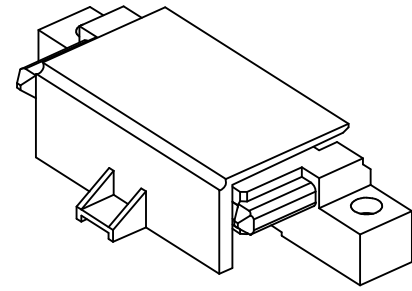
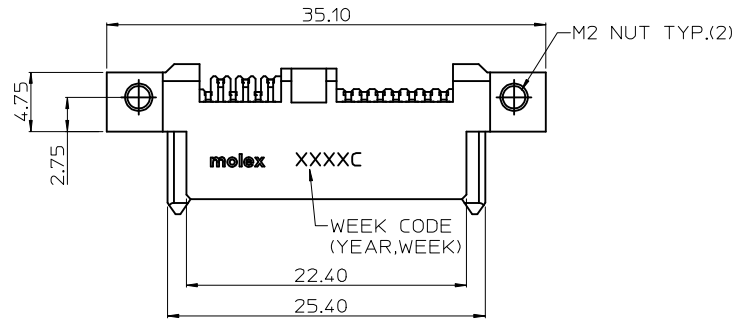


7 6 5 4 3 2 1



MODIFY THE CAP EC NO: SH2009-0659 DRWN: F YANG05 CHKD: RZHANG APPR: H MWANG	DESCRIPTION 2009/04/29 2009/04/29 2009/06/09	QUALITY SYMBOLS	GENERAL TOLERANCES (UNLESS SPECIFIED)	DIMENSION STYLE MM ONLY		SCALE	DESIGN UNITS METRIC	THIRD ANGLE PROJECTION		
		$\nabla=0$ $\sphericalangle=0$	mm INCH 4 PLACES ± --- ± --- 3 PLACES ± --- ± --- 2 PLACES ± 0.25 ± --- 1 PLACE ± 0.25 ± --- ANGULAR ± 3 °	DRAWN BY DATE LINDA 2008/01/04 CHECKED BY DATE ALLEN LIN 2008/01/07 APPROVED BY DATE ERICK LAN 2008/01/07	TITLE		SLIMLINE SATA RECEPTACLE REVERSE RIGHT ANGLE WITH SCREW AND CLIP			
		DRAFT WHERE APPLICABLE MUST REMAIN WITHIN DIMENSIONS		MATERIAL NO. SEE SHEET 2		DOCUMENT NO. SD-48325-002		SHEET NO. 1 OF 2		
		SIZE A4		THIS DRAWING CONTAINS INFORMATION THAT IS PROPRIETARY TO MOLEX INCORPORATED AND SHOULD NOT BE USED WITHOUT WRITTEN PERMISSION						
		REV		MOLEX INCORPORATED MOLEX INCORPORATED						

6 5 4 3 2 1

7

6

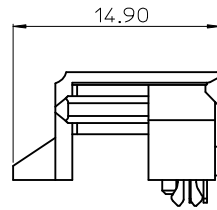
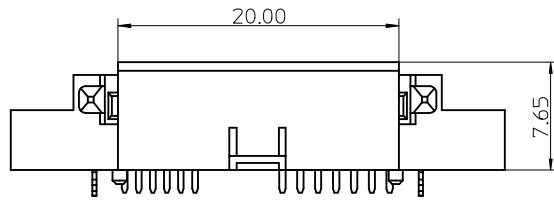
5

4

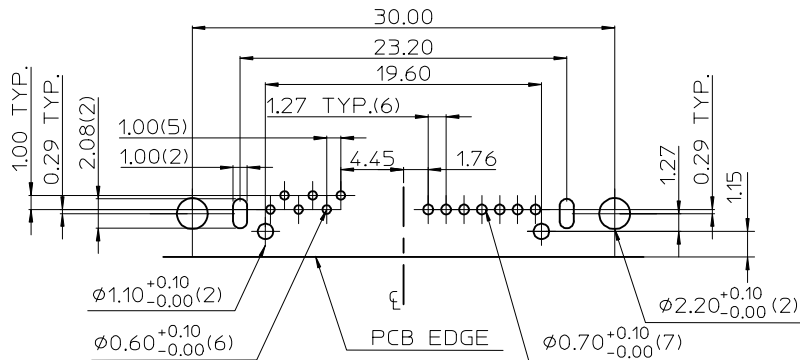
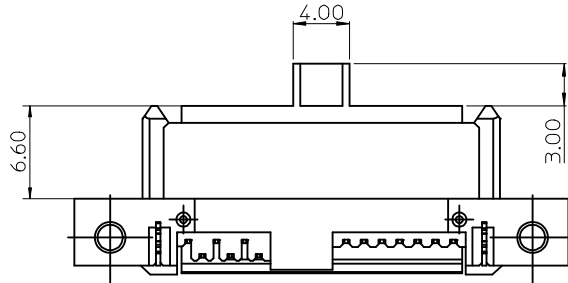
3

2

1



P/N	PLATING OPTIONS	WITHSTANDING MFG TEST
48325-1101	GOLD FLASH	NO
48325-1102	15 MICROINCH	NO
48325-1103	30 MICROINCH	YES



RECOMMENDED PC BOARD LAYOUT
TOLERANCE:±0.05mm(TOP VIEW)

NOTES:

- MATERIAL:
HOUSING & CAP : LIQUID CRYSTAL POLYMER, GLASS FIBER FILLED, UL94V-0, COLOR : BLACK.
TERMINAL : COPPER ALLOY.
NUT : ZINC ALLOY.
CLIP : COPPER ALLOY.
- PLATING:
TERMINAL:
CONTACT AREA : SEE TABLE
SOLDER TAIL : MATTE TIN PLATED, THICKNESS=100 MICROINCH MIN/2.54 MICROMETER MIN.
UNDER PLATE : NICKEL(Ni) PLATED OVERALL.
NUT : NICKEL(Ni) PLATED, THICKNESS=50 MICROINCH MIN/1.27 MICROMETER MIN.
UNDER PLATE : COPPER(Cu) PLATED OVERALL.
CLIP : TIN(Sn) PLATED, THICKNESS=100 MICROINCH MIN/2.54 MICROMETER MIN OVER NICKEL PLATED.
- MATES WITH : SERIES 47300.
- RECOMMENDED PCB THICKNESS:1.20±0.05mm.
- PRODUCT SPECIFICATION REFER TO PS-48321-001.
- TEST SUMMARY REFER TO TS-48325-001.
- PACKAGING SPECIFICATION REFER TO PK-48325-002.
- LEAD FREE & RoHS COMPLIANT PRODUCT.

MODIFY THE CAP EC NO: SH2009-0659 DRWN:F.YANG05 CHKD:RZHANG APPR:H.WANG	2009/04/29 2009/04/29 2009/06/09	DESCRIPTION REV	QUALITY SYMBOLS ▽=0 ◻=0	GENERAL TOLERANCES (UNLESS SPECIFIED)		DIMENSION STYLE MM ONLY		SCALE 1:1	DESIGN UNITS METRIC	THIRD ANGLE PROJECTION
				mm	INCH	DRAWN BY LINDA	DATE 2008/01/04	TITLE SLIMLINE SATA RECEPTACLE REVERSE RIGHT ANGLE WITH SCREW AND CLIP		
				4 PLACES ± ---	± ---	CHECKED BY ALLEN LIN	DATE 2008/01/07			
				3 PLACES ± ---	± ---	APPROVED BY ERICK LAN	DATE 2008/01/07	MOLEX INCORPORATED DOCUMENT NO. SD-48325-002 SHEET NO. 2 OF 2		
2 PLACES ± 0.25	± ---	DRAFT WHERE APPLICABLE MUST REMAIN WITHIN DIMENSIONS		SEE THE TABLE						
1 PLACE ± 0.25	± ---	ANGULAR ± 3 °		THIS DRAWING CONTAINS INFORMATION THAT IS PROPRIETARY TO MOLEX INCORPORATED AND SHOULD NOT BE USED WITHOUT WRITTEN PERMISSION						

6

5

4

3

2

1