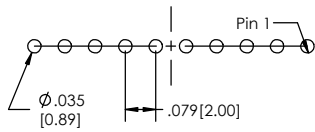
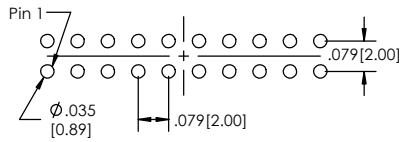


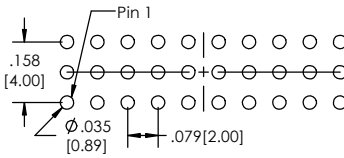
Recommended P.C. Board Layout
SCALE 4:1



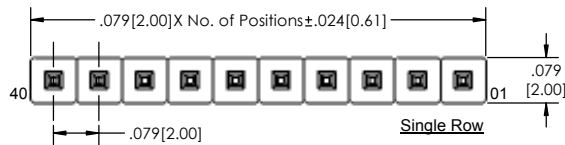
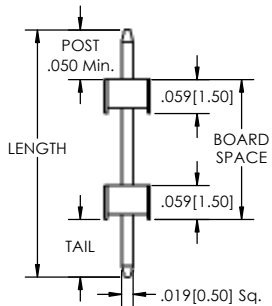
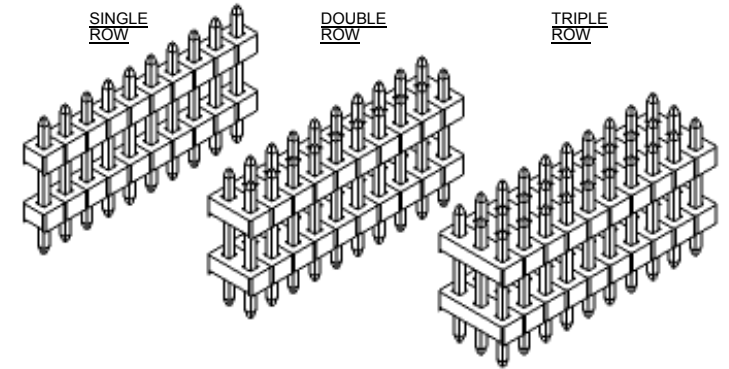
SINGLE ROW



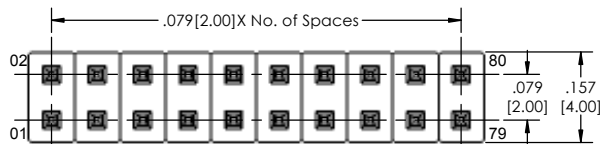
DOUBLE ROW



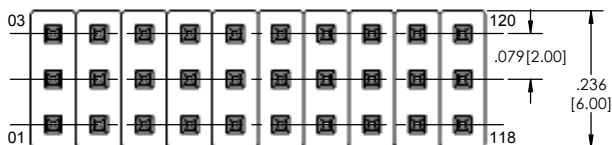
TRIPLE ROW



Single Row

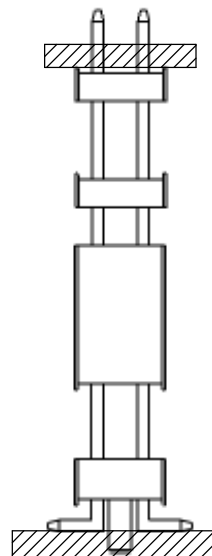


Double Row



Triple Row

APPLICATION



BSTC-2 [XX] - [X] - [XXX] - [XX] - [XXX] - [XX] - [XXX] - [XX] - [XXX] - [LF]
(A) (B) (C) (D) (E) (F) (G) (H) (I) (J)

- A. Pins Per Row - 1 through 40
- B. Row Specification - S= Single Row, D= Double Row, T= Triple Row
- C. Desired Tail Length - Please specify tail length - e.g. .100(2.54)=100
- D. Pin Options - See Pin Options below
- E. Desired Post Height - If left blank - Post(P) = Length(L) - Board Space(B) - Tail Length(T)
- F. Plating Options - See Plating Options below
- G. Desired Board Space - Please Specify required space - E.g. .100(2.54)=100 - .200(5.08) min.
- H. Lock Tight "LT" (Optional) - LT= With
- I. Polarized Position - Leave blank if not needed - If required, specify empty pin position - e.g. 012 for Pin 12
- J. Lead Free

Plating options	
G	-10µ Gold on Contact Area/ Flash on Tail
T	-Matte Tin all Over
GT	-10µ Gold on Contact Area/ Matte Tin on Tail
H	-30µ Gold on Contact Area/ Matte Tin on Tail
F	-Gold Flash over Entire Pin
FT	-Gold Flash on Contact Area/ Matte Tin on Tail

Specifications:
 Current Rating: 3.0 Ampere
 Insulation Resistance: 1000M Ohms Min.
 Dielectric Withstanding: 500V AC
 Contact Resistance: 20M Ohms Max.
 Operation Temperature: -40°C to +105°C
 Max. Process Temperature
 Peak: 260°C up to 20 secs.
 Process: 230°C up to 60 secs.
 Wave: 260°C up to 6 secs.
 Manual Solder: 350°C up to 5 secs.

Materials:
 Contact Material: Phosphor Bronze
 Insulator Material: Nylon 6T
 Plating: Au or Sn over 50µ" (1.27) Ni

Mates with:
 BCSS,
 BSSH,
 BSSHC,
 BSSQ,
 BSSQC,
 LSMBC,
 LSSHSM,
 SMBC,
 SSHQ,
 SSHQR,
 SSHR,
 SSHSM,
 ULSMBC.

Pin Options	
Length	
.255 [6.48mm]	01
.323 [8.20mm]	02
.377 [9.58mm]	03
.397 [10.08mm]	04
.417 [10.59mm]	06
.456 [11.58mm]	07
.555 [14.10mm]	08
.535 [13.59mm]	09
.575 [14.61mm]	10
.594 [15.09mm]	12
.614 [15.60mm]	14
.673 [17.09mm]	15
.713 [18.11mm]	16
.733 [18.62mm]	17
.752 [19.10mm]	18
.830 [21.08mm]	22
.871 [22.12mm]	24
.950 [24.13mm]	28
1.110 [28.19mm]	30
1.170 [29.37mm]	36

* N/A With .180 Tail
 Post + Board Space + Tail must not exceed Overall Length

Tails may be clipped to achieve specific dimensions.
 Products cut to specific sizes are uncancelable/ nonreturnable.
 Parts are subject to change without notice.



PROPRIETARY AND CONFIDENTIAL
 THE INFORMATION CONTAINED IN THIS DRAWING IS THE SOLE PROPERTY OF Major League Electronics. ANY REPRODUCTION IN PART OR AS A WHOLE WITHOUT THE WRITTEN PERMISSION OF Major League Electronics IS PROHIBITED.

UNLESS OTHERWISE SPECIFIED:		NAME DATE		
DIMENSIONS ARE IN INCHES		DRAWN EOW	01/28/14	
TOLERANCES:		CHECKED GWE	01/28/14	
ONE DECIMALS ±.100		ENG APPR.		
TWO DECIMAL ±.100		MFG APPR.		
THREE DECIMAL ±.005		ADDRESS:		
FOUR DECIMAL ±.002		2533 Centennial Blvd. Jeffersonville, IN 47130 Phone: 812-670-4174 Fax: 812-670-4175 E-Mail: mle@mlelectronics.com		
NEXT ASSY USED ON		MATERIAL		TITLE: BSTC-2 SERIES
APPLICATION		FINISH		SIZE DWG. NO. C
DO NOT SCALE DRAWING				REV B
				SCALE 6:1 SHEET 1 OF 1