

GFL | Lobe threaded nut

Technopolymer

METRIC

RoHS

PA

+212 °F
-22 °F

GN 6305.1 | Quick-tightening toggle nuts

Quick-tightening toggle nuts

Steel

METRIC

RoHS

- 1
- 2
- 3
- 4
- 5
- 6
- 7
- 8
- 9
- 10
- 11
- 12
- 13
- 14
- 15
- 16
- 17
- 18

MATERIAL

Glass-fibre reinforced polyamide based (PA) technopolymer, black colour, matte finish.

STANDARD EXECUTION

Brass boss, threaded through hole.

FEATURES AND APPLICATIONS

The ergonomic seven-lobe shape allows an effective grip to the operator when tightening.

Suitable for axial locking; it can be used as a nut.

STANDARD EXECUTION

Zinc-plated steel hub, pass-through oblique hole, partially threaded. The two lever arms are welded to the hub.

FEATURES AND APPLICATIONS

The axial thread, intersecting with the oblique hole, creates the conditions allowing for quick tightening with just a few turns creating an effective tightening over many threads.

SPECIAL EXECUTIONS ON REQUEST

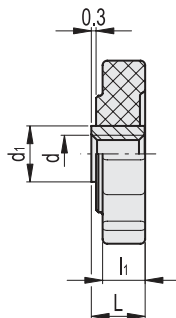
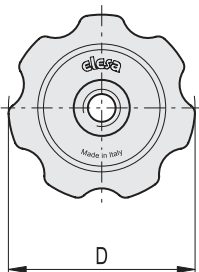
Stainless steel.

INSTRUCTIONS FOR USE

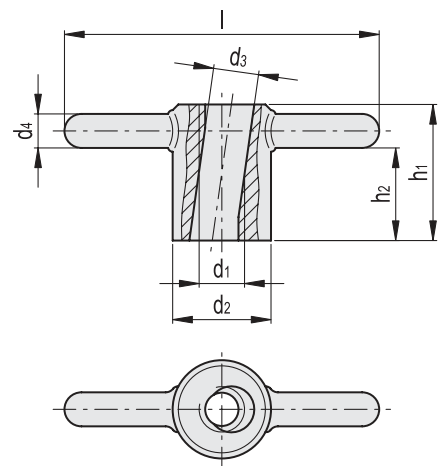
The nut thread must fit onto the pin in the axial position. All threads are engaged with a slight tightening.



ELESA Original design



| Conversion Table | | | |
|-------------------|------|----|------|
| 1 mm = 0.039 inch | | | |
| D | | l | |
| mm | inch | mm | inch |
| 40 | 1.57 | 68 | 2.68 |
| | | 82 | 3.23 |
| | | 98 | 3.86 |



| Code | Description | D | d6H | L | d1 | l1 | Δ |
|--------|--------------|----|-----|----|----|-----|---|
| 168541 | GFL.40-B M8 | 40 | M8 | 10 | 12 | 8.5 | 7 |
| 168542 | GFL.40-B M10 | 40 | M10 | 10 | 13 | 8.5 | 6 |

| Code | Description | d1 | d2 | d3 | d4 | l | h1 | h2 | Δ |
|----------|------------------|-----|----|------|----|----|----|------|-----|
| GN.63391 | GN 6305.1-M10-ST | M10 | 24 | 10.5 | 8 | 68 | 30 | 20 | 100 |
| GN.63393 | GN 6305.1-M12-ST | M12 | 26 | 13 | 9 | 82 | 36 | 24.5 | 138 |
| GN.63395 | GN 6305.1-M16-ST | M16 | 32 | 17 | 10 | 98 | 45 | 32 | 240 |

Clamping knobs