

PART NAME

NEMA 4X ENCLOSURE

PART No.

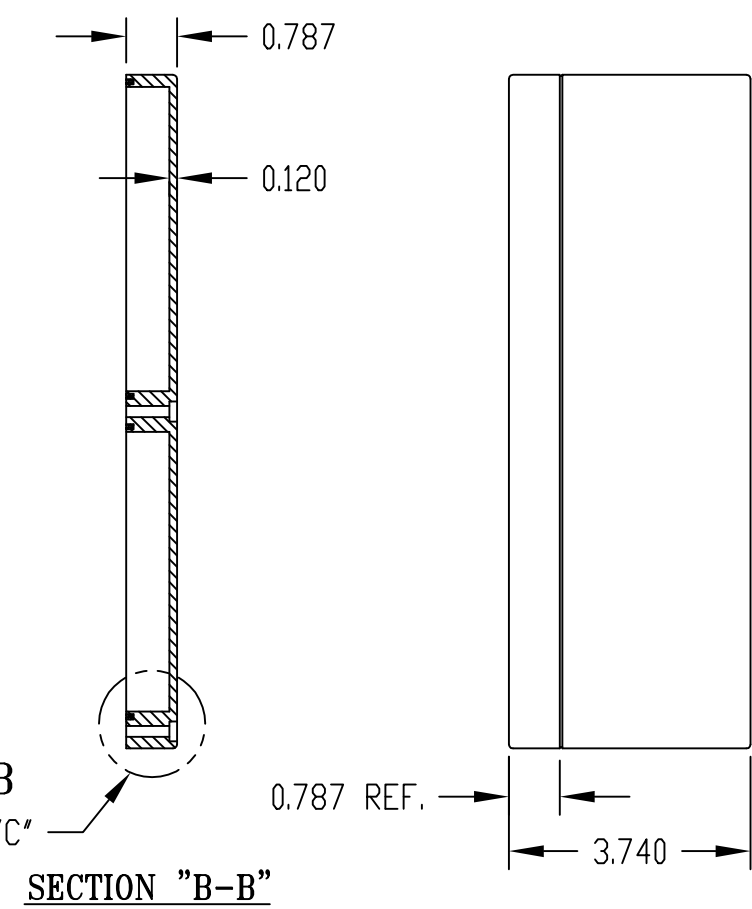
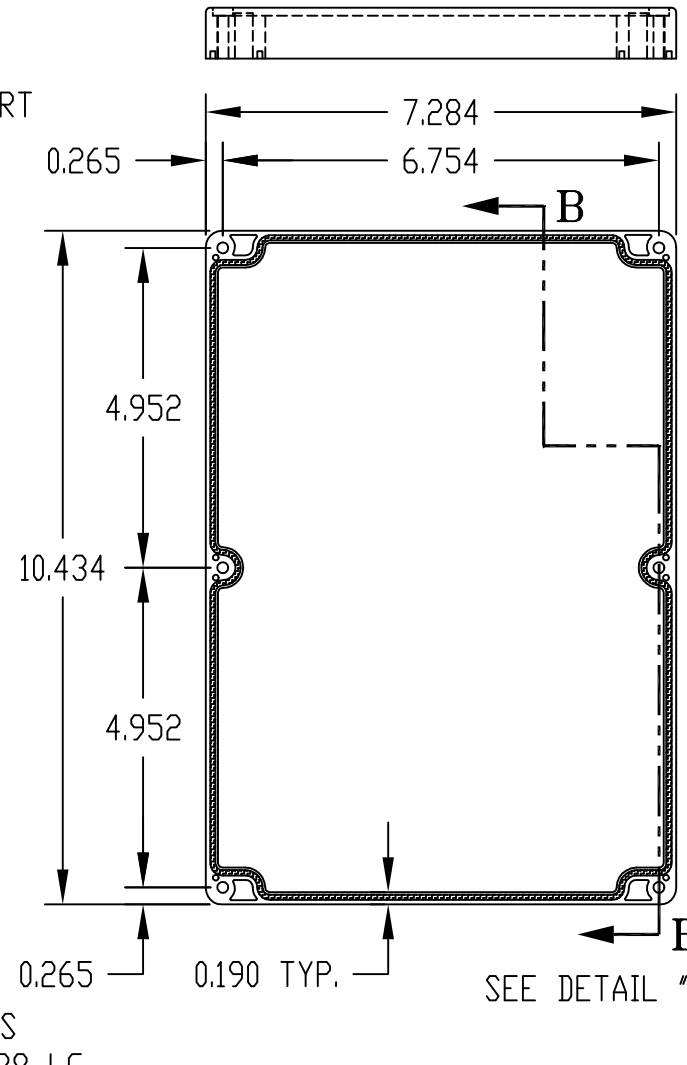
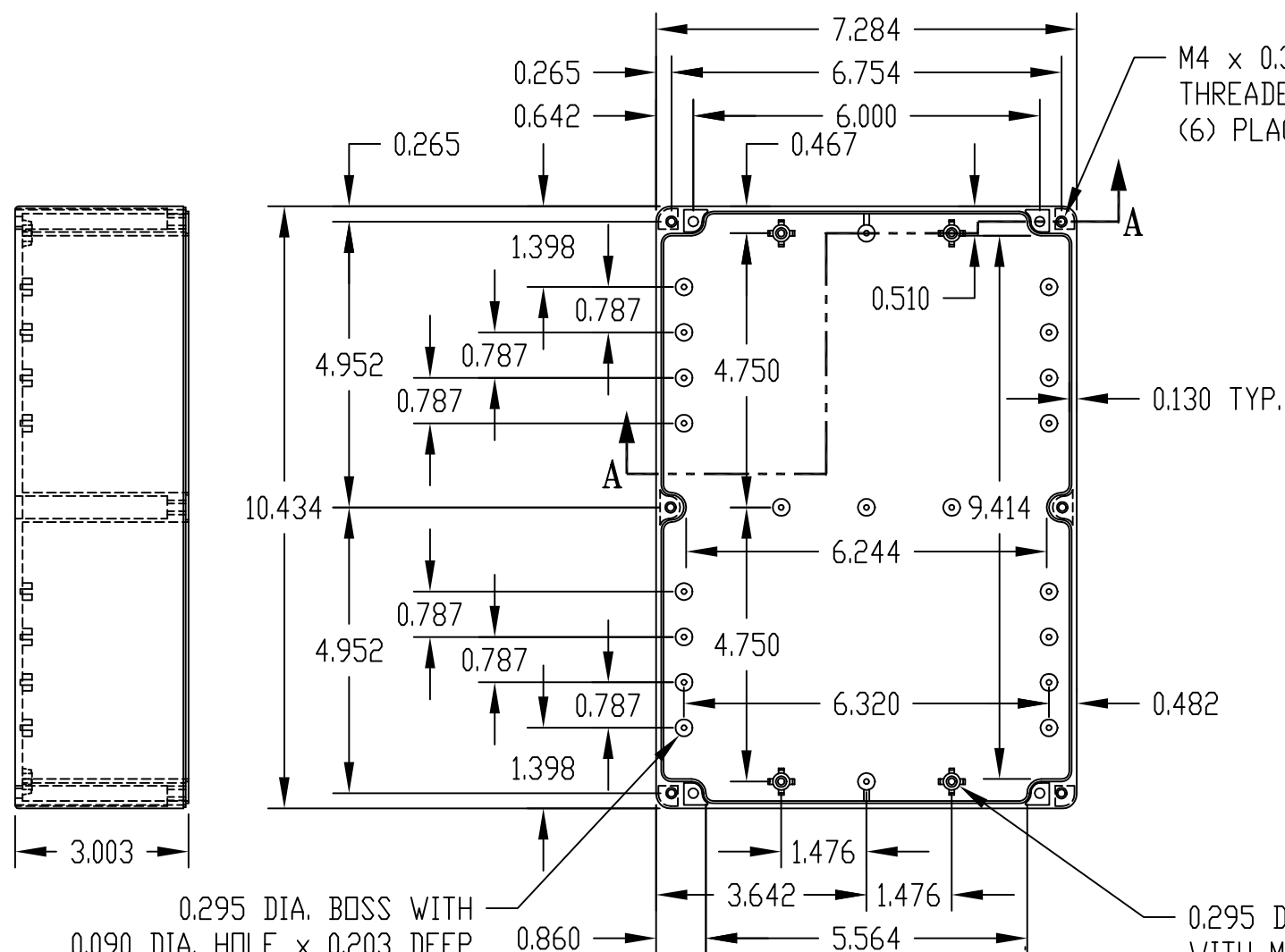
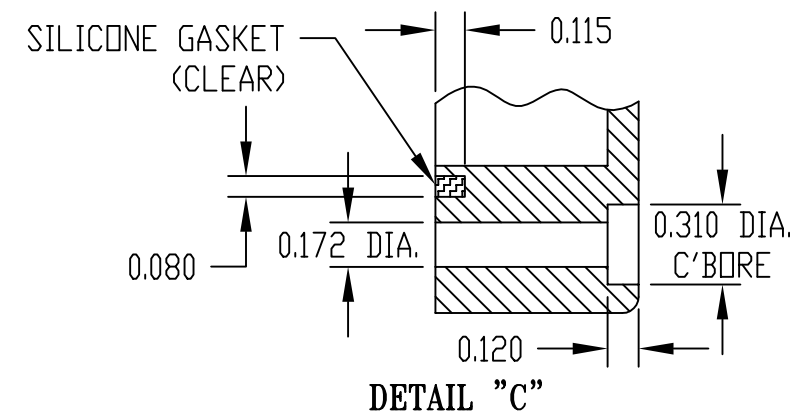
PN-1335, PN-1335-C AND PN-1335-DG

REV. DATE

11-17-08

INDUSTRY STANDARDS:

POLYCARBONATE (LIGHT GRAY AND CLEAR)
 UL94-HB FLAMMABILITY RATING (UL FILE #E41613)
 UV STABILIZED
 SERVICE TEMPERATURE RANGE: -40°C TO +120°C
 ABS (DARK GRAY)
 UL94-HB FLAMMABILITY RATING (ULFILE #E560700)
 SERVICE TEMPERATURE RANGE: -40°C TO +80°C



BODY

SECTION "A-A"

COVER

NOTE: ALL DIMENSIONS HAVE ±0.015 TOLERANCE UNLESS OTHERWISE SPECIFIED.

| PART NUMBER | MATERIAL | | FINISH | | HARDWARE KIT |
|-------------|-----------------|-------|------------|-------|---|
| | BODY | COVER | BODY | COVER | |
| PN-1335 | POLYCARBONATE | | LIGHT GRAY | | KIT CONTAINS (6) M4 x 25mm (1.000") LG. SCREWS FOR ASSEMBLY |
| PN-1335-C | POLYCARBONATE | | LIGHT GRAY | CLEAR | |
| PN-1335-DG | HIGH-IMPACT ABS | | DARK GRAY | | |