

6

5

4

3

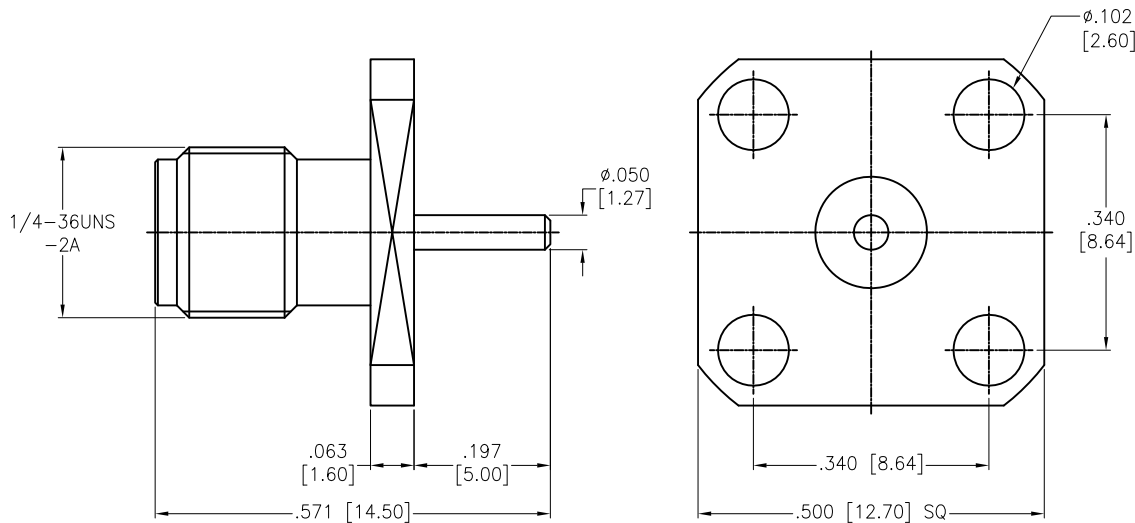
2

1

APPROVED: _____

DATE: _____ TITLE: _____

Rev	AWO #	Description	Date	Appr
-		RELEASED	7/20/16	



BODY	BRASS	GOLD
INSULATOR	PTFE	WHITE
CENTER PIN	BRASS	GOLD
DESCRIPTION	MATERIAL	FINISH

SPECIFICATIONS:

Electrical:
 Nominal Impedance: 50 ohms
 Frequency range: DC-18 GHz
 Working voltage: 335 VOLTS max.
 Proof voltage: 1,000 VOLTS
 Temperature Rating:
 Operating temperature: -65°C to +165°C
 Environmental:
 Lead free, RoHS compliant.



UNLESS OTHERWISE SPECIFIED ALL DIMENSIONS ARE INCHES [MM] TOLERANCES: EXCEPT AS NOTED		<h2 style="text-align: center;">ADAM TECH</h2> <p style="text-align: center;">909 Rahway Avenue, Union, NJ 07083 Phone: 908-687-5000 Fax: 908-687-5710</p>													
INCHES HOLES															
.X ± .10	Ø.X ± .10	<table border="1"> <tr> <th colspan="2">APPROVALS</th> <th>DATE</th> </tr> <tr> <td>DRAWN</td> <td>AY</td> <td>7/20/16</td> </tr> <tr> <td>CHECKED</td> <td>SY</td> <td>7/20/16</td> </tr> <tr> <td>APPROVED</td> <td></td> <td></td> </tr> </table>		APPROVALS		DATE	DRAWN	AY	7/20/16	CHECKED	SY	7/20/16	APPROVED		
APPROVALS				DATE											
DRAWN	AY			7/20/16											
CHECKED	SY	7/20/16													
APPROVED															
.XX ± .020	Ø.XX ± .015	<table border="1"> <tr> <th colspan="3">TITLE</th> </tr> <tr> <td colspan="3">RF CONNECTOR, SMA STR PANEL RECEPT JACK</td> </tr> </table>		TITLE			RF CONNECTOR, SMA STR PANEL RECEPT JACK								
TITLE															
RF CONNECTOR, SMA STR PANEL RECEPT JACK															
.XXX ± .015	Ø.XXX ± .010	<table border="1"> <tr> <td>SIZE</td> <td>PART NO.</td> <td>REV.</td> </tr> <tr> <td>X</td> <td>RF2-155-T-00-50-G</td> <td>-</td> </tr> </table>		SIZE	PART NO.	REV.	X	RF2-155-T-00-50-G	-						
SIZE	PART NO.	REV.													
X	RF2-155-T-00-50-G	-													
REF: S00277T		SCALE: NTS	SHEET 1 OF 1												

6

5

4

3

2

1