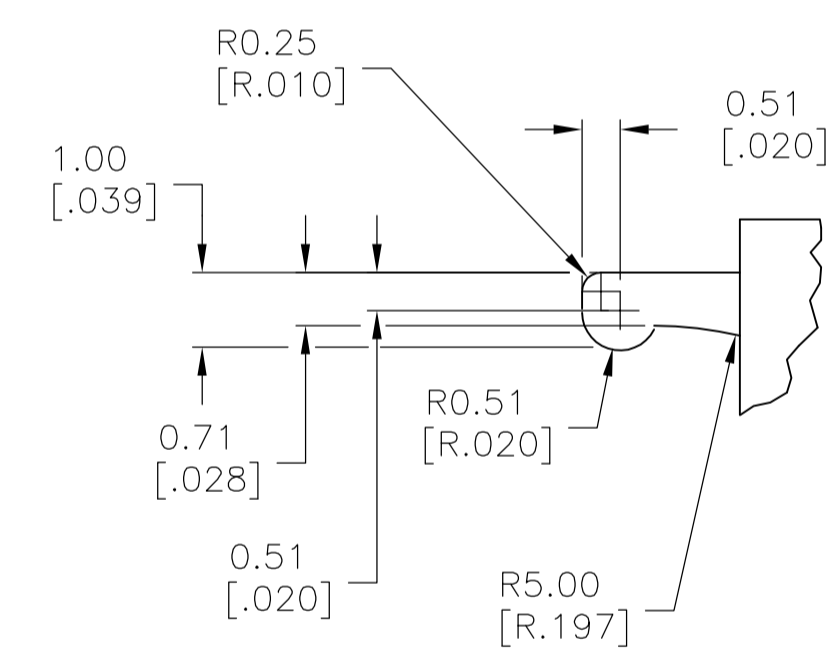
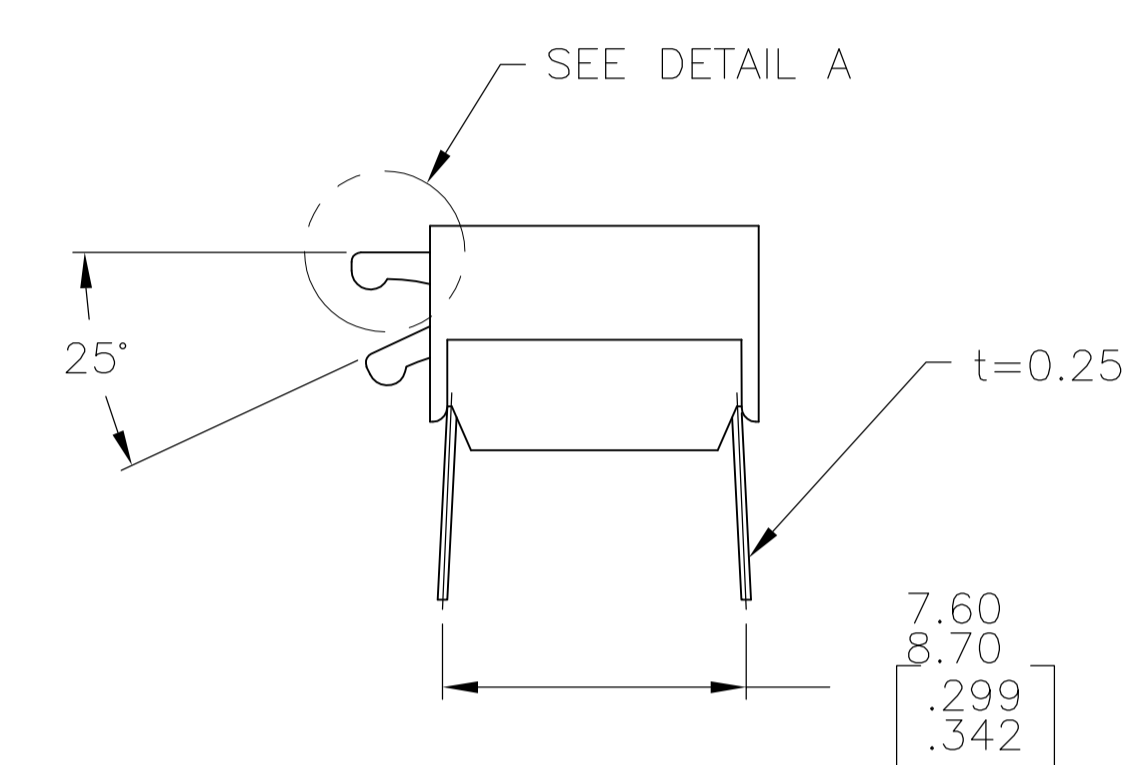


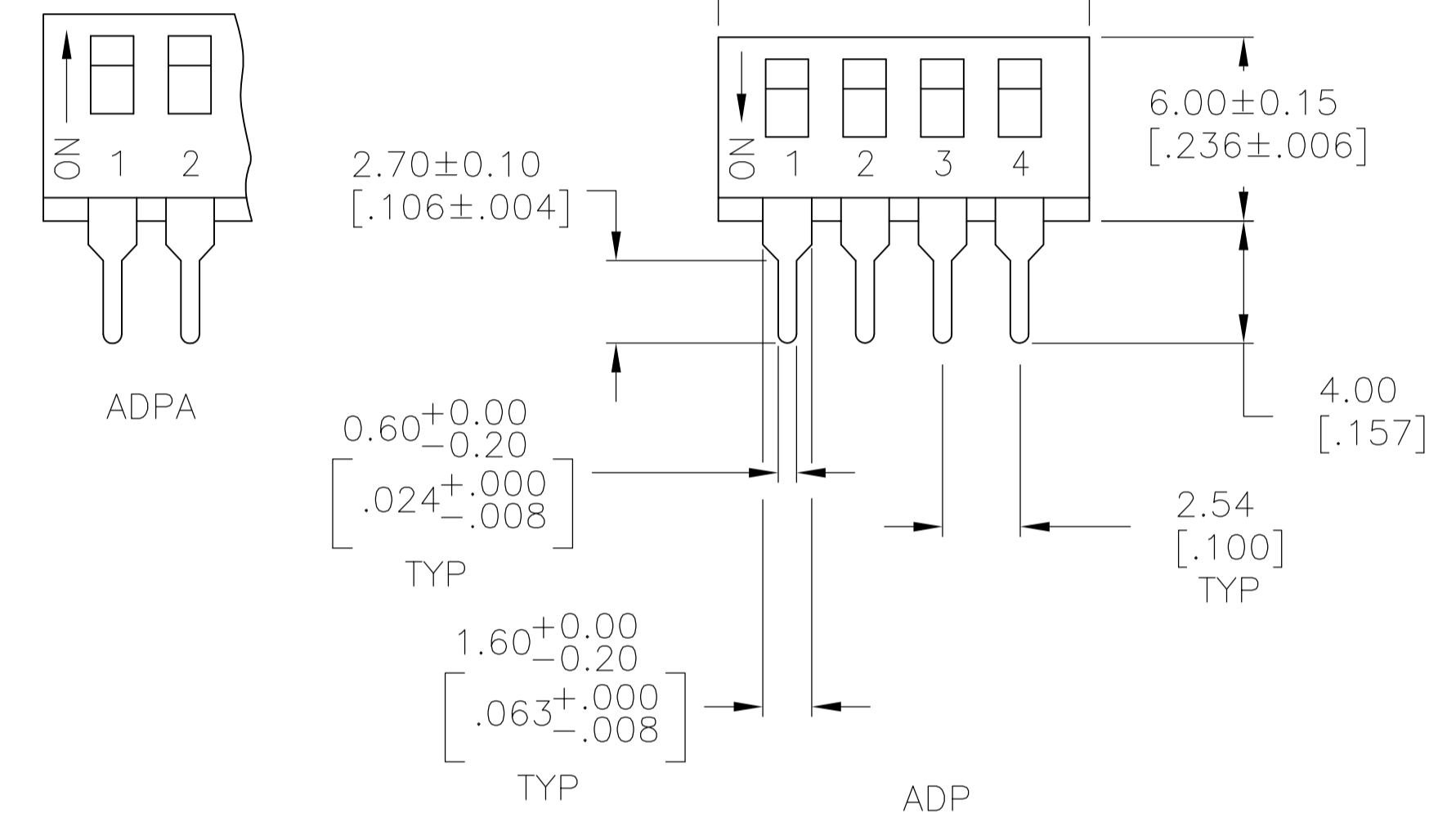
REVISIONS				
P	LTR	DESCRIPTION	DATE	BY
D6		REVISED PER ECR-17-009987	22JUL2017	SK AS



RECOMMENDED HOLE LAYOUT



DETAIL A
SCALE: 10:1



SPECIFICATIONS:

MATERIAL:
CASE: PPS 94V-0, BLACK
COVER: PPS 94V-0, BLACK
ACTUATOR: NYLON PA6T 94V-0, WHITE
MOVING CONTACT: COPPER ALLOY, GOLD OVER NICKEL PLATE.
FIXED CONTACT/TERMINAL: COPPER ALLOY, GOLD OVER NICKEL PLATE.

ELECTRICAL:
CONTACT RATING: MAX RATING (SWITCHING) 100 MILLIAMPS @ 24V DC,
MIN (SWITCHING) 0.10 MICROAMPS @1 MILLIVOLT,
MAX (NON-SWITCHING) 1 AMP @ 5V DC INITIAL
CONTACT RESISTANCE: 50 MILLIOHMS MAX.
INSULATION RESISTANCE: 100 MEGOHMS MIN. @ 100 VDC.
DIELECTRIC STRENGTH: 500 VAC. LIFE EXPECTANCY: 1000 CYCLES MIN.

MECHANICAL:
ACTUATION FORCE: 800g MAX.

ENVIRONMENTAL:
OPERATING TEMPERATURE: -22°F TO +185°F (-30°C TO +85°C).
STORAGE TEMPERATURE: -49°F TO +212°F (-45°C TO +100°C).
SOLDER HEAT RESISTANCE TO 265±3°C FOR 8±2 SECONDS.
SOLDERABILITY PER JIS C 0050 & JIS C 0053

- CONTACT PRESSURE: 280,000 PSI.
 - CLEANING: AQUEOUS SOLUTION OR SOLVENT.
 - PACKAGING OPTIONS- CLEAR TUBES OR TAPE AND REEL PER EIA-481 SWITCH SUPPLIED IN THE "OFF" POSITION UNLESS "ON" IS SPECIFIED IN THE ALCO PART NUMBER (SEE PART NUMBER TABLE FOR ALL OPTIONS)
 - TOP & FRONT SURFACES TO BE CLEARLY MARKED AS SHOWN.
 - SWITCHES TO BE BLACK WITH WHITE ACTUATORS AND MARKINGS.
 - ALL MATERIAL AND FINISHES SHALL COMPLY WITH EU DIRECTIVE 2002/95/EC OF 27JAN2003 (ROHS)
- △ OBSOLETE PARTS: OBSOLETE CIS STREAMLINING PER D.RENAUD/D.SINISI

SEE SHEET 2 FOR SURFACE MOUNT OPTIONS AND DIMENSIONS.

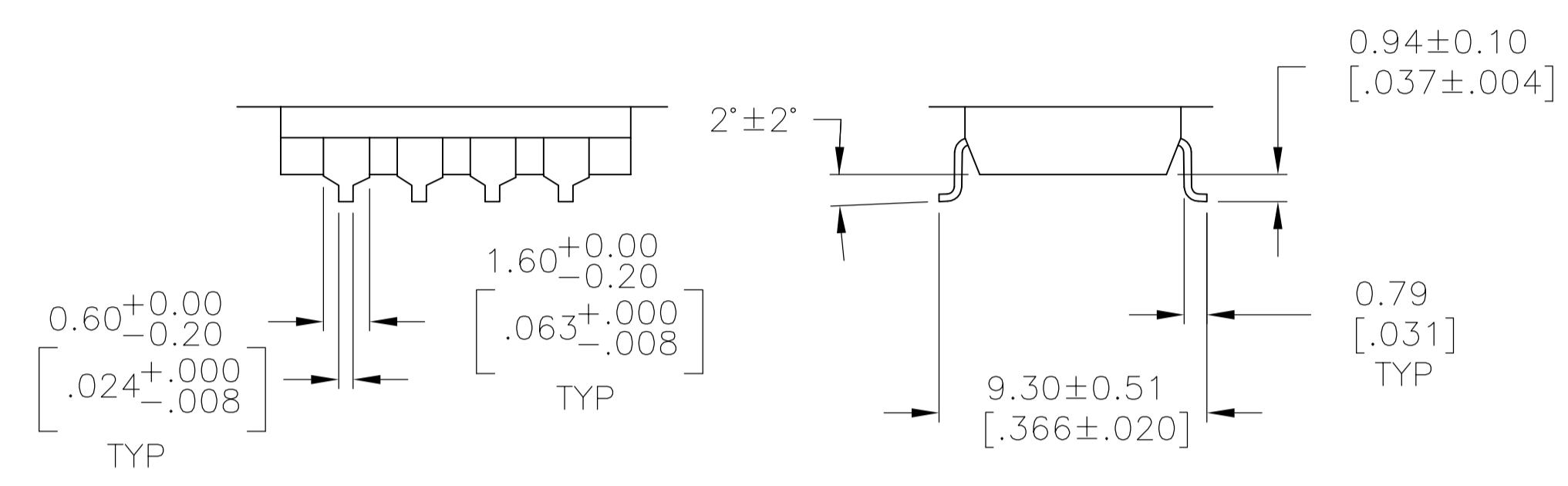
STATUS	DESCRIPTION	QTY	LEAD	DATE	REV	P/N
OBSOLETE	TAPE & REEL	2	7.06 [.278]			ADPA02STRO4 6-1571999-5
OBSOLETE	TUBE	10	27.38 [1.078]			ADPA10SA04 6-1571999-4
OBSOLETE	TUBE	10	27.38 [1.078]			ADPA10S04 6-1571999-3
OBSOLETE	TUBE	10	27.38 [1.078]			ADPA1004 6-1571999-2
OBSOLETE	TUBE	9	24.84 [.978]			ADPA09SA04 6-1571999-1
OBSOLETE	TUBE	9	24.84 [.978]			ADPA09S04 6-1571999-0
OBSOLETE	TUBE	9	24.84 [.978]			ADPA0904 5-1571999-9
OBSOLETE	TUBE	8	22.30 [.878]			ADPA08SA04 5-1571999-8
OBSOLETE	TUBE	8	22.30 [.878]			ADPA08S04 5-1571999-7
OBSOLETE	TUBE	8	22.30 [.878]			ADPA0804 5-1571999-6
OBSOLETE	TUBE	7	19.76 [.778]			ADPA07SA04 5-1571999-5
OBSOLETE	TUBE	7	19.76 [.778]			ADPA07S04 5-1571999-4
OBSOLETE	TUBE	7	19.76 [.778]			ADPA0704 5-1571999-3
OBSOLETE	TUBE	6	17.22 [.678]			ADPA06SA04 5-1571999-2
OBSOLETE	TUBE	6	17.22 [.678]			ADPA06S04 5-1571999-1
OBSOLETE	TUBE	6	17.22 [.678]			ADPA0604 5-1571999-0
OBSOLETE	TUBE	5	14.68 [.578]			ADPA05SA04 4-1571999-9
OBSOLETE	TUBE	5	14.68 [.578]			ADPA05S04 4-1571999-8
OBSOLETE	TUBE	5	14.68 [.578]			ADPA0504 4-1571999-7
OBSOLETE	TUBE	4	12.14 [.478]			ADPA04SA04 4-1571999-6
OBSOLETE	TUBE	4	12.14 [.478]			ADPA04S04 4-1571999-5
OBSOLETE	TUBE	4	12.14 [.478]			ADPA0404 4-1571999-4
OBSOLETE	TUBE	2	7.06 [.278]			ADPA02SA04 4-1571999-3
OBSOLETE	TUBE	2	7.06 [.278]			ADPA0204 4-1571999-2
OBSOLETE	TAPE & REEL SWITCH ON	10	27.38 [1.078]			ADP10STRON04 4-1571999-0
OBSOLETE	TAPE & REEL	10	27.38 [1.078]			ADP10STR04 3-1571999-9
OBSOLETE	TUBE	10	27.38 [1.078]			ADP10SA04 3-1571999-8
OBSOLETE	TUBE	10	27.38 [1.078]			ADP10S04 3-1571999-7
OBSOLETE	TUBE	10	27.38 [1.078]			ADP1004 3-1571999-6
OBSOLETE	TAPE & REEL SWITCH ON	9	24.84 [.978]			ADP09STRON04 3-1571999-5
OBSOLETE	TAPE & REEL	9	24.84 [.978]			ADP09STR04 3-1571999-4
OBSOLETE	TUBE	9	24.84 [.978]			ADP09SA04 3-1571999-3
OBSOLETE	TUBE	9	24.84 [.978]			ADP09S04 3-1571999-2
OBSOLETE	TUBE	9	24.84 [.978]			ADP0904 3-1571999-1
OBSOLETE	TAPE & REEL SWITCH ON	8	22.30 [.878]			ADP08STRON04 3-1571999-0
OBSOLETE	TAPE & REEL	8	22.30 [.878]			ADP08STR04 2-1571999-9
OBSOLETE	TUBE	8	22.30 [.878]			ADP08SA04 2-1571999-8
OBSOLETE	TUBE	8	22.30 [.878]			ADP08S04 2-1571999-7
OBSOLETE	TUBE	8	22.30 [.878]			ADP0804 2-1571999-6
OBSOLETE	TAPE & REEL SWITCH ON	7	19.76 [.778]			ADP07STRON04 2-1571999-5
OBSOLETE	TAPE & REEL	7	19.76 [.778]			ADP07STR04 2-1571999-4
OBSOLETE	TUBE	7	19.76 [.778]			ADP07SA04 2-1571999-3
OBSOLETE	TUBE	7	19.76 [.778]			ADP07S04 2-1571999-2
OBSOLETE	TUBE	7	19.76 [.778]			ADP0704 2-1571999-1
OBSOLETE	TAPE & REEL SWITCH ON	6	17.22 [.678]			ADP06STRON04 2-1571999-0
OBSOLETE	TAPE & REEL	6	17.22 [.678]			ADP06STR04 1-1571999-9
OBSOLETE	TUBE	6	17.22 [.678]			ADP06SA04 1-1571999-8
OBSOLETE	TUBE	6	17.22 [.678]			ADP06S04 1-1571999-7
OBSOLETE	TUBE	6	17.22 [.678]			ADP0604 1-1571999-6
OBSOLETE	TAPE & REEL SWITCH ON	5	14.68 [.578]			ADP05STRON04 1-1571999-5
OBSOLETE	TAPE & REEL	5	14.68 [.578]			ADP05STR04 1-1571999-4
OBSOLETE	TUBE	5	14.68 [.578]			ADP05SA04 1-1571999-3
OBSOLETE	TUBE	5	14.68 [.578]			ADP05S04 1-1571999-2
OBSOLETE	TUBE	5	14.68 [.578]			ADP0504 1-1571999-1
OBSOLETE	TAPE & REEL SWITCH ON	4	12.14 [.478]			ADP04STRON04 1-1571999-0
OBSOLETE	TAPE & REEL	4	12.14 [.478]			ADP04STR04 1571999-9
OBSOLETE	TUBE	4	12.14 [.478]			ADP04SA04 1571999-8
OBSOLETE	TUBE	4	12.14 [.478]			ADP04S04 1571999-7
OBSOLETE	TUBE	4	12.14 [.478]			ADP0404 1571999-6
OBSOLETE	TAPE & REEL SWITCH ON	2	7.00 [.276]			ADP02STRON04 1571999-5
OBSOLETE	TAPE & REEL	2	7.00 ± 0.50 [.276 ± .020]			ADP02STR04 1571999-4
OBSOLETE	TUBE	2	7.00 ± 0.50 [.276 ± .020]			ADP02SA04 1571999-3
OBSOLETE	TUBE	2	7.00 ± 0.50 [.276 ± .020]			ADP02S04 1571999-2
OBSOLETE	TUBE	2	7.00 ± 0.50 [.276 ± .020]			ADP0204 1571999-1

THIS DRAWING IS A CONTROLLED DOCUMENT.

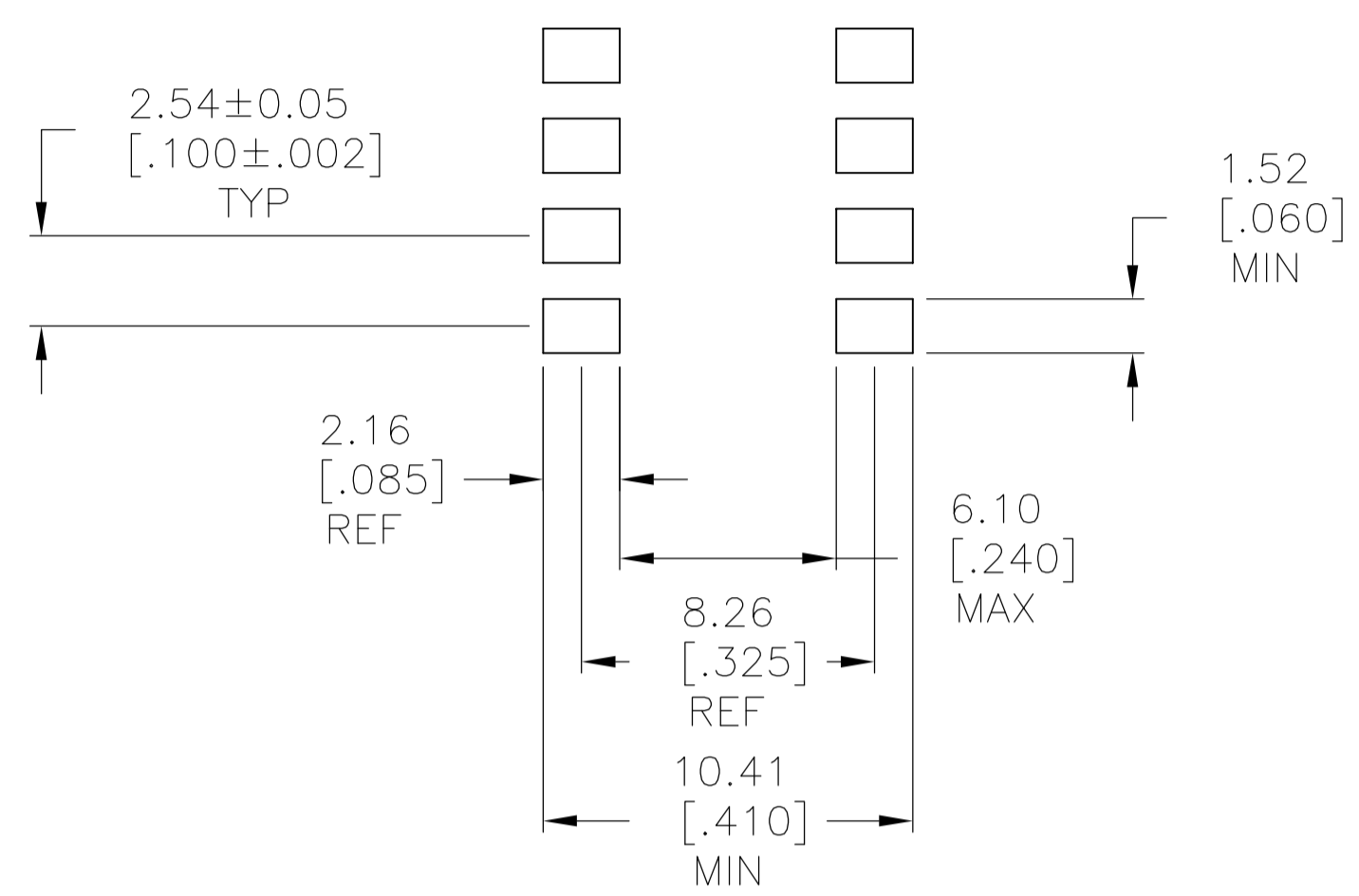
<p>DIMENSIONS: mm [INCHES]</p> <p>0 PLC ± 1 PLC ± 2 PLC ± 3 PLC ± .012[0.31] 4 PLC ± ANGLES ± 1°</p>	<p>TOLERANCES UNLESS OTHERWISE SPECIFIED:</p> <p>FINISH</p>	<p>APVD M. SARVER 15FEB05</p> <p>PRODUCT SPEC</p> <p>APPLICATION SPEC</p>	<p>SIZE A1</p> <p>CAGE CODE 00779</p> <p>DRAWING NO 1571999</p>	<p>RESTRICTED TO</p> <p>SCALE 1:1 SHEET 1 OF 2 REV D6</p>
--	---	---	---	---

CUSTOMER DRAWING

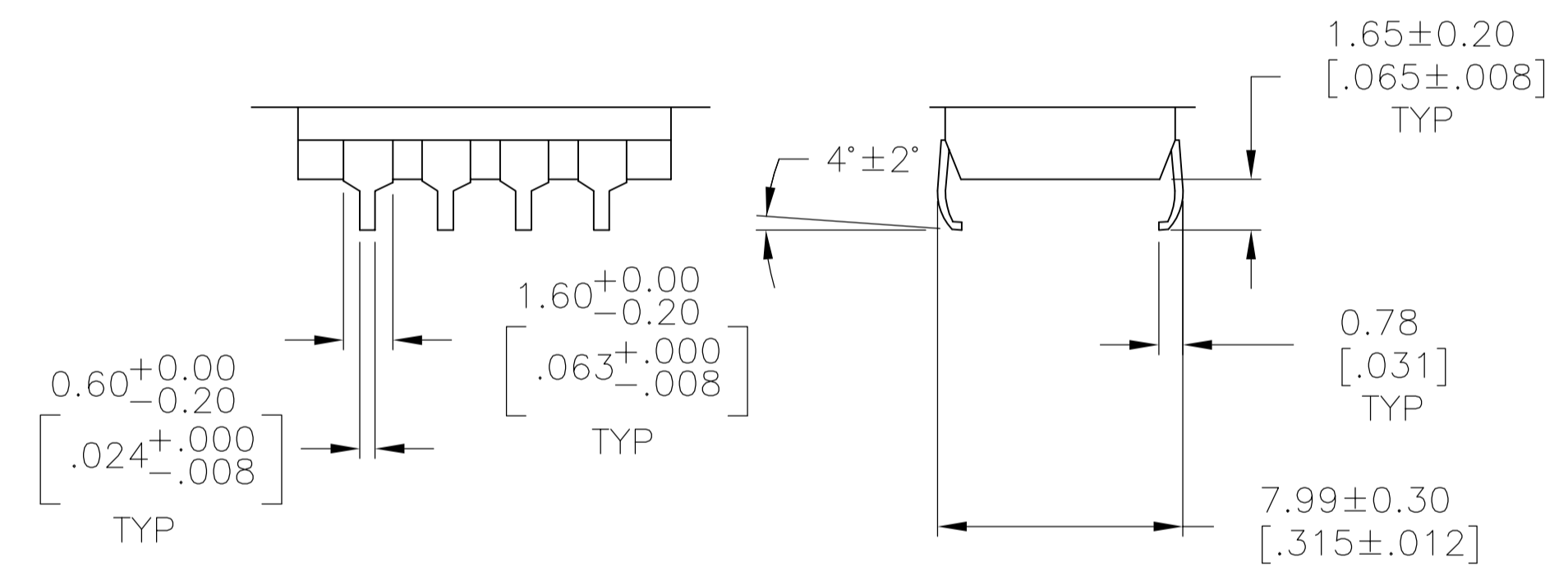
REVISIONS				
P	LTR	DESCRIPTION	DATE	APP'D
-	-	SEE SHEET 1	-	-



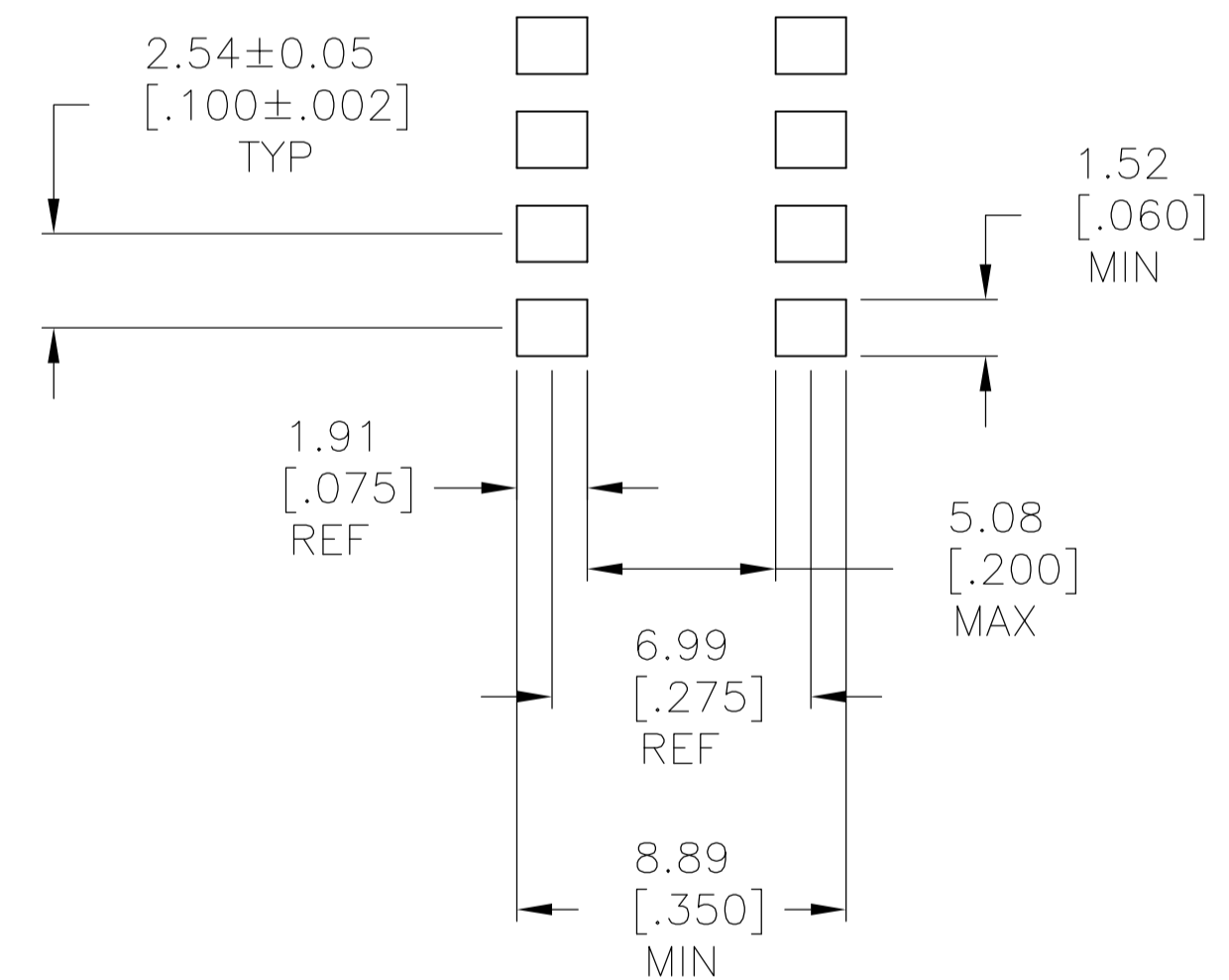
SURFACE MOUNT
S TERMINATION



RECOMMENDED PAD LAYOUT
SURFACE MOUNT
"S" TERMINATION



SURFACE MOUNT
SA TERMINATION



RECOMMENDED PAD LAYOUT
SURFACE MOUNT
"SA" TERMINATION

THIS DRAWING IS A CONTROLLED DOCUMENT.		OWN M. BINNER 14FEB05	TE Connectivity	
DIMENSIONS: mm [INCHES]		CHK M. SARVER 15FEB05	NAME	
0 PLC ± - 1 PLC ± - 2 PLC ± - 3 PLC ± .012[0.31] 4 PLC ± - ANGLES ± 1°		APVD M. SARVER 15FEB05	DIP SWITCH ASSEMBLY ADP/PA SERIES	
TOLERANCES UNLESS OTHERWISE SPECIFIED:		APPLICATION SPEC	RESTRICTED TO	
MATERIAL	FINISH	WEIGHT	SIZE A1	CAGE CODE 00779
CUSTOMER DRAWING		SCALE 1:1	DRAWING NO. 1571999	REV D6
		SHEET 2	OF 2	