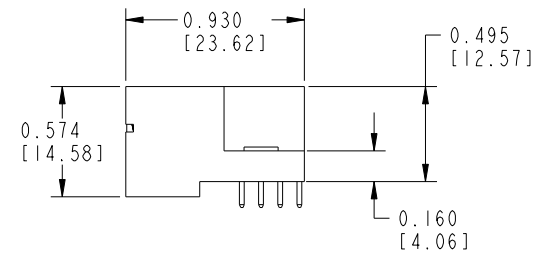
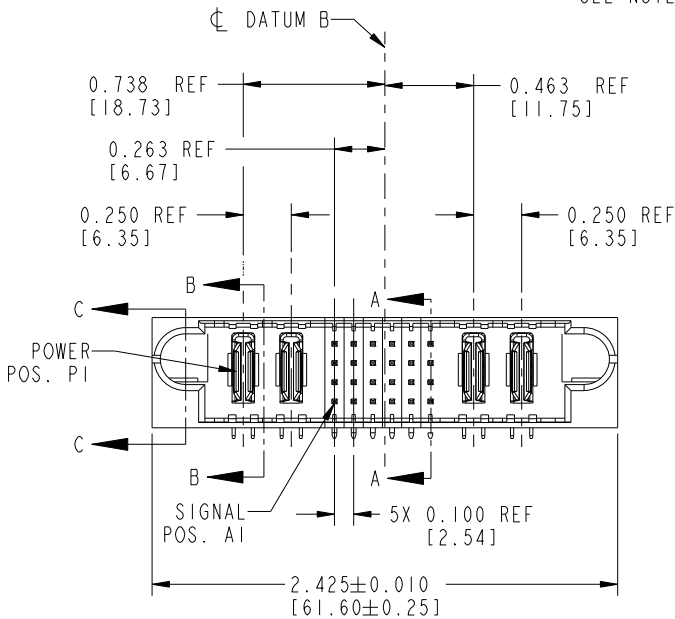
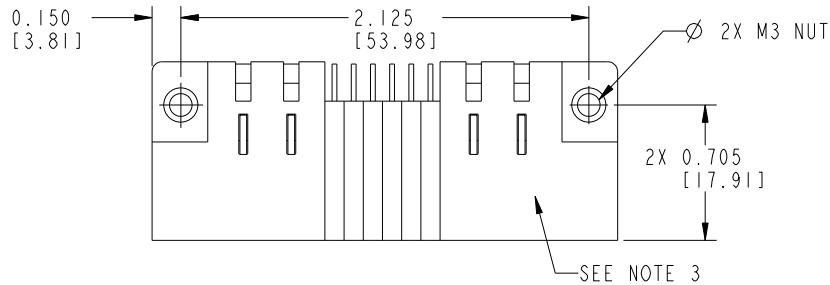
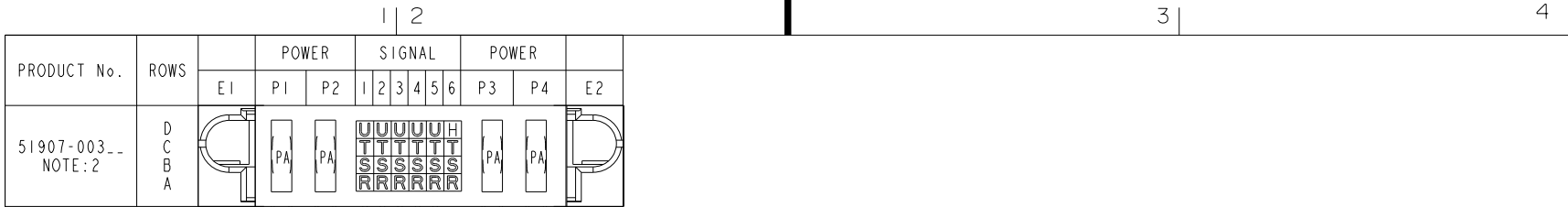


Tous droits strictement réservés. Reproduction ou communication a des tiers interdite sous quelque forme que ce soit sans autorisation écrite du propriétaire. Propriété de c FCI. Droits de reproduction FCI.



All rights strictly reserved. Reproduction or issue to third parties in any form whatever is not permitted without written authority from the proprietor. Property of FCI. Copyright FCI.



CODE	DIM "M" MATING LENGTH	CONTACT TYPE
H	0.220 [5.59]	SIGNAL
R	0.270 [6.86]	SIGNAL
S	0.270 [6.86]	SIGNAL
T	0.270 [6.86]	SIGNAL
U	0.270 [6.86]	SIGNAL
PA	N/A [N/A]	POWER

NOTE 1				tolerances unless otherwise specified	
lir	ecn no.	dr	date	linear	.XX±.01/0.X±0.3
A	V04-1113	TAB	11/15/04		.XX±.005/0.XX±0.13
B	DG05-0336	CS	09/19/05		.XXX±.0020/0.XXX±0.051
C	DG06-0005	JMG	01/06/06	angles	0°±2°
D	DG08-0266	W D	09/22/08	dr	T. BRUNGARD 11/15/04
				engr	M. GRAY 11/15/04
				chr	M. GRAY 11/15/04
				appd	M. GRAY 11/15/04
sheet index	revision sheet	D 1	D 2	D 3	

CUSTOMER COPY		FCI	
www.fciconnect.com		www.fciconnect.com	
title		2P +24S +2P	
RIGHT ANGLE SOLDER HEADER		RIGHT ANGLE SOLDER HEADER	
product family	PwrBlade	code	213
size	dwg no	sheet	1 of 3
A	51907-003		

B

B

1 | 2

Pro/E

PDM: Rev: D

STATUS: Released

Printed: Dec 20, 2010

3 |

4

cage code 28516

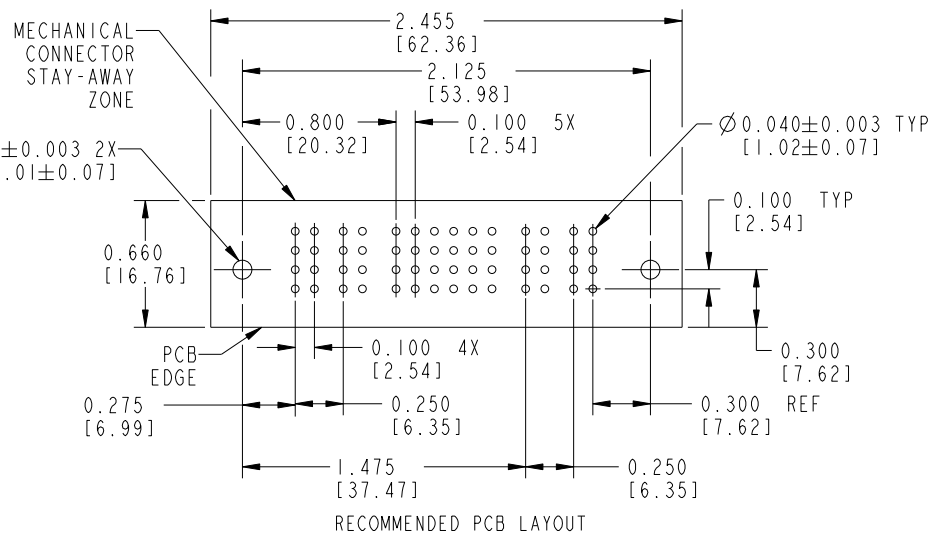
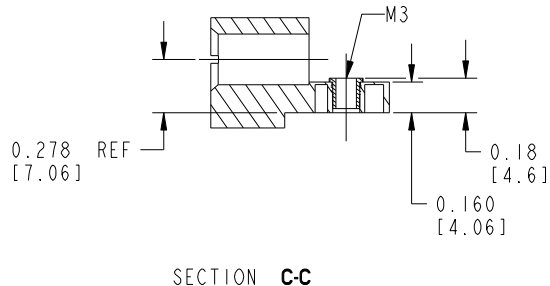
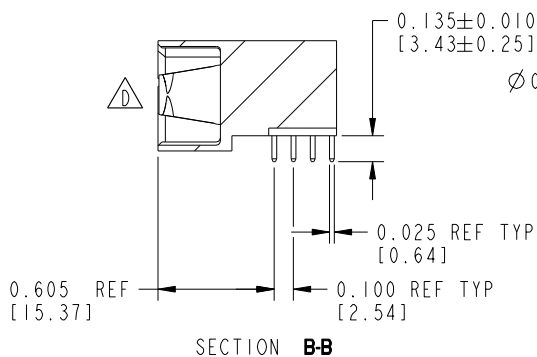
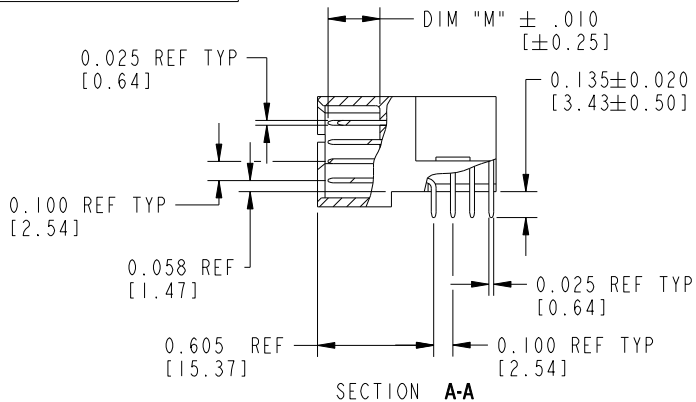
4

Tous droits strictement réservés. Reproduction ou communication a des tiers interdite sous quelque forme que ce soit sans autorisation écrite du propriétaire. Propriété de c FCI. Droits de reproduction FCI.

All rights strictly reserved. Reproduction or issue to third parties in any form whatever is not permitted without written authority from the proprietor. Property of FCI. Copyright FCI.



PRODUCT NUMBER  
51907-003--  
NOTE:2



mat'l code				NOTE 1		tolerances unless otherwise specified		CUSTOMER COPY		FCI	
lir	ecn no.	dr	date	linear	.XX±.01/0.X±0.3	projection	www.fciconnect.com		title		
D				angles	.XXY±.005/0.XX±0.13	INCH/MM	2P +24S +2P		RIGHT ANGLE SOLDER HEADER		
				dr	.XXX±.0020/0.XXX±0.051	scale	product family		PwrBlade		code
				engr	0°±2°	1:1	size		dwg no		213
				chr			A		51907-003		sheet
				appd							2 of 3
sheet index	revision sheet										

Pro/E

PDM: Rev:D

STATUS: Released

Printed: Dec 20, 2010

cage code 22536



1 | 2

3

4

PRODUCT NUMBER  
51907-003--  
NOTE:2

CONNECTOR NOTES:

1. HOUSING MATERIAL: UL 94 V-0 GLASS FILLED HIGH TEMP THERMOPLASTIC  
POWER CONTACT MATERIAL: COPPER ALLOY  
SIGNAL CONTACT MATERIAL: COPPER ALLOY  
M3 NUT MATERIAL: BRASS ALLOY
- △ 2. SEE ITEM 1 & 2 IN PRINT 10064183 FOR PLATING SPEC OF 51907-003 AND 51907-003LF RESPECTIVELY.v
3. "MANUFACTURER'S" NAME, P/N, AND DATE CODE TO APPEAR ON THIS SURFACE
4. PRODUCT SPECIFICATION GS-12-149

PCB NOTES:

5. ALL DIMENSIONS ARE BASIC UNLESS OTHERWISE SPECIFIED.
6. ALL THROUGH HOLES ARE LOCATED WITH A TRUE POSITION OF 0.004 [0.10]
7. ALL HOLE DIAMETERS ARE FINISHED HOLE SIZE
8. Ø0.158[4.01] THROUGH HOLES ARE UNPLATED.
9. Ø0.0453±0.0010 [1.151±0.025] DRILLED HOLES PLATED WITH 0.0003 [0.008] MIN SnPb OVER 0.001 [0.03] TO 0.003 [0.08] Cu PLATING TO ACHIEVE A Ø0.040±0.003 [1.02±0.07] HOLE.
10. A/△ D SYMBOL WILL BE NEXT TO ANY DIMENSION, VIEW, OR NOTE WHICH HAS BEEN MODIFIED WITH THE CURRENT DRAWING REVISION.

mat'l code		SEE NOTES		tolerances unless otherwise specified		CUSTOMER		FCI	
lfr	ecn no.	dr	date	linear	.XX±.01/0.X±0.3	COPY		www.fciconnect.com	
D				projection	.XXX±.005/0.XX±0.13	projection		title 2P +24S +2P	
				angles	.XXX±.002/0.XXX±0.051	INCH/MM		RIGHT ANGLE SOLDER HEADER	
				dr	0°±2°	scale		product family PwrBlade code	
				enrg	T. BRUNGARD 11/15/04	1:1		size 213	
				chr	M. GRAY 11/15/04			sheet 3 of 3	
				appd	M. GRAY 11/15/04			A 51907-003	
sheet index	revision sheet								

1 | 2

Pro/E

PDM: Rev:D

STATUS: Released

Printed: Dec 20, 2010

cage code 2856

4