



Amphenol FCI

2016 AFCl

©

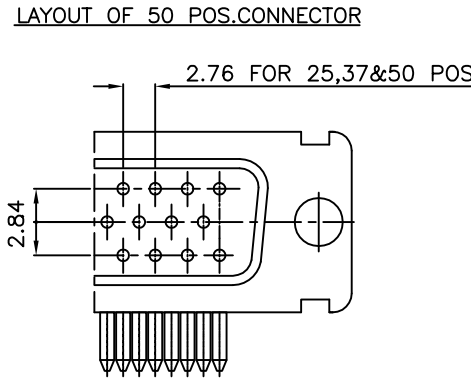
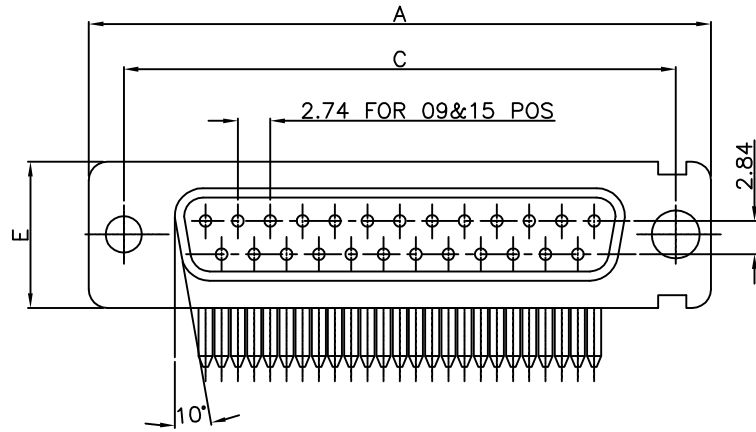
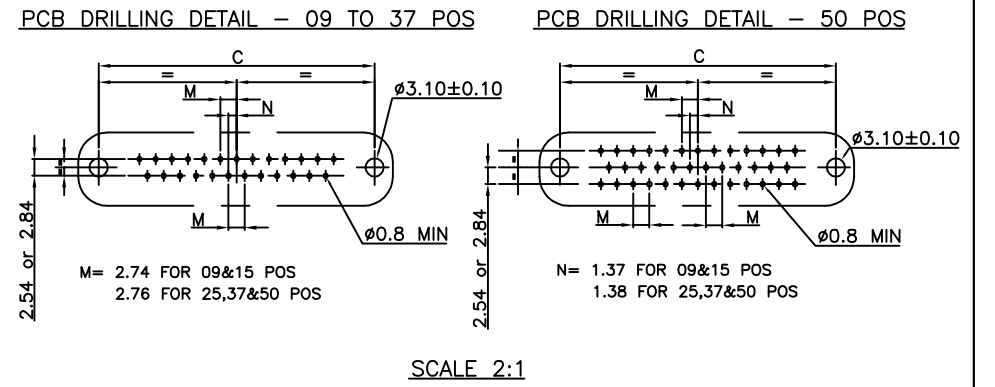
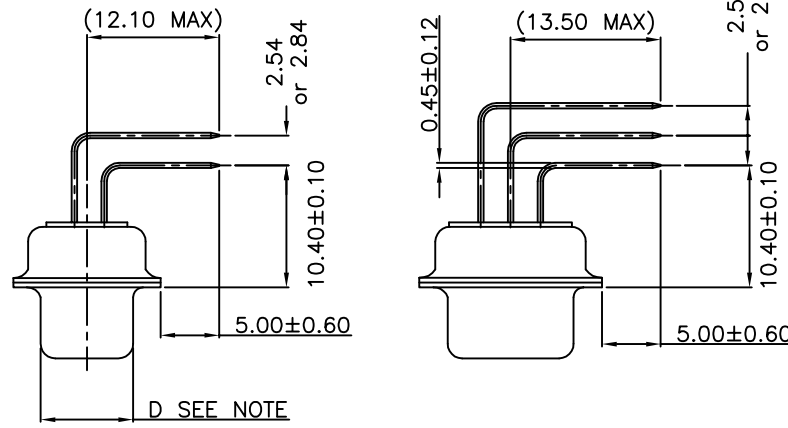
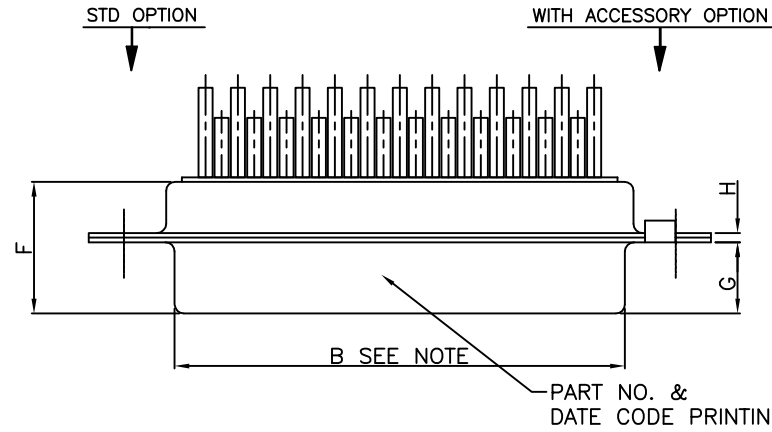
1

2 3

4

5

6



TECHNICAL SPECIFICATIONS

- SHELLS : TIN PLATED STEEL
- CONTACTS DIA ON ACTIVE AREA  $\phi 1$  MM.
- CONTACTS MATERIAL : COPPER ALLOY
- CONTACT PLATING : GXT / GOLD OVER NICKEL (ACTIVE ZONE)  
: TIN OVER NICKEL (TERMINATION ZONE)
- FOR LEAD FREE PLATING : 2 $\mu$  MIN. TIN TOP OVER 1.27 $\mu$  MIN.  
: NICKEL UNDER PLATE (ON TERMINATION ZONE)
- INSULATOR MATERIAL : SELF EXTINGUISHING THERMOPLASTIC-  
TO UL CLASS 94 V0  
THE HOUSING WILL WITHSTAND EXPOSURE TO  
260-265°C IF WE USE PROTECTIVE ADHESIVE  
(Kapton or Teflon) OR PROTECTIVE METALLIC DEVICE
- OPERATING TEMPERATURE : -55°C +125°C
- OPERATING CURRENT : 5 A PER CONTACT
- CONTACT RESISTANCE :  $\leq 25$  m $\Omega$
- INSULATION RESISTANCE :  $\geq 5000$  M $\Omega$
- MAXIMUM VOLTAGE : 1000 V.r.m.s
- MECHANICAL ENDURANCE : 500 MATINGS MIN.FOR CODE 65  
200 MATINGS MIN.FOR CODE 64
- DAMP HEAT : 21 DAYS.

50	P	66.93	52.80	61.11	11.20	15.37	11.09	5.75	1.0
	S	66.93	52.42	61.11	10.74	15.37	11.21	6.05	0.9
37	P	69.32	55.42	63.50	8.35	12.55	11.09	5.75	1.0
	S	69.32	54.83	63.50	7.89	12.55	11.21	6.05	0.9
25	P	53.03	38.96	47.04	8.35	12.55	11.09	5.75	0.9
	S	53.03	38.37	47.04	7.89	12.55	11.21	6.05	0.9
15	P	39.14	25.24	33.32	8.35	12.55	10.99	5.85	0.9
	S	39.14	24.66	33.32	7.89	12.55	11.21	6.05	0.9
09	P	30.81	16.91	24.99	8.35	12.55	10.99	5.85	0.9
	S	30.81	16.33	24.99	7.89	12.55	11.21	6.05	0.9
	SHELL SIZE	$\pm 0.38$	$\pm 0.13$	$\pm 0.13$	$\pm 0.13$	$\pm 0.38$	F MAX	$\pm 0.25$	$\pm 0.12$
		A	B	C	D	E		G-O	H

- NOTES:  
1) GENERAL VIEW SHOWN IS OPTION C  
2) INSIDE DIMENSION OF MALE AND OUTSIDE DIMENSION OF THE FEMALE CONNECTOR

"This LF product meets European Union Directives and other country regulations as described in GS-47-0004."  
The housing will withstand exposure to 260°C peak temperature for 3.5 seconds in a wave solder application with a 1.6mm minimum thick circuit board.  
Packaging as per GS-14-920

ORDERING INFORMATION

SERIES DBV 25 P 5 64 C T X XXX LF

SHELL SIZE E,A,B,C,D

OPTIONS  
BLANK-STANDARD  
V-RVTD HEX. FEM SCREW LOCK (UNC4-40)  
L-CLINCH NUT (M3)  
O-CLINCH NUT (UNC4-40)

NO.OF CONTACTS  
09,15,25,37,50

CONTACTS  
P - PIN  
S - SOCKET

TERMINATION TYPE  
5- ANGLED SPILL 2.54mm BETWEEN ROWS  
8- ANGLED SPILL 2.84mm BETWEEN ROWS

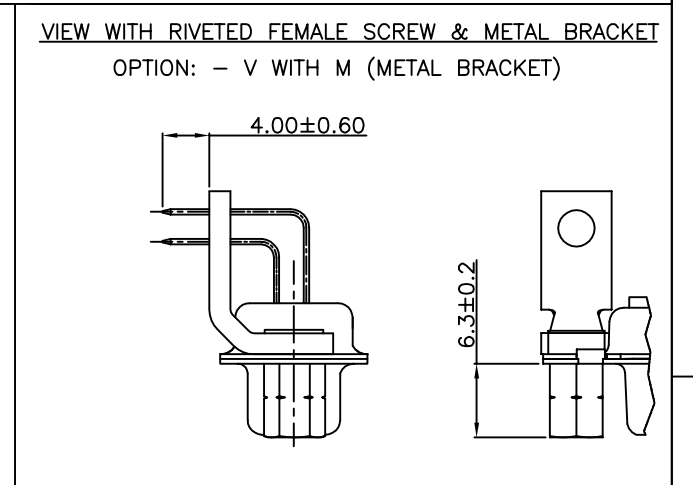
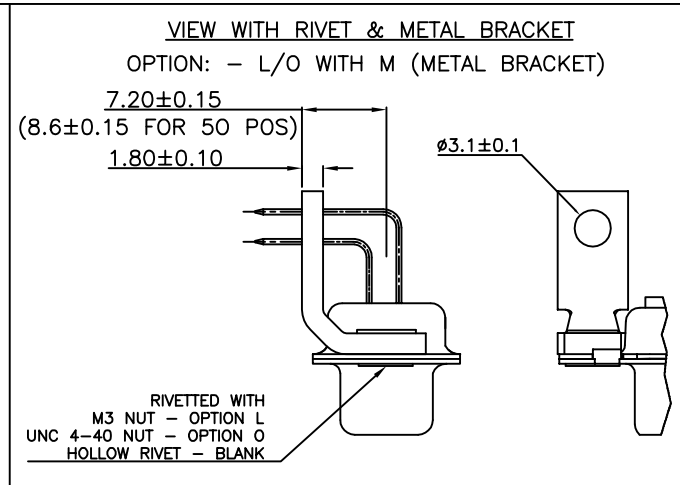
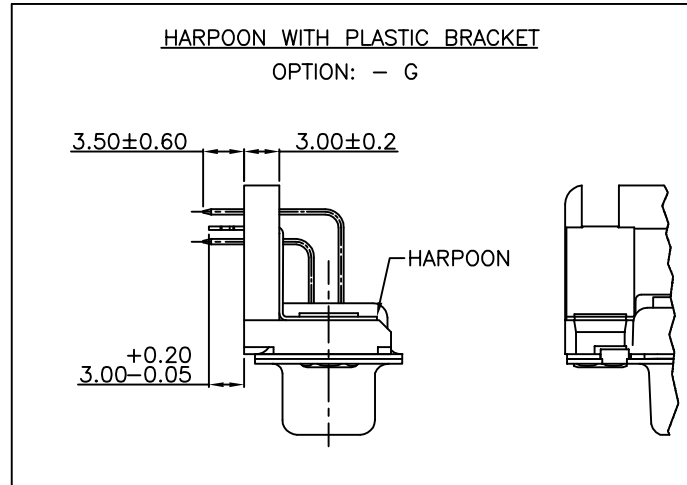
LEAD FREE SPECIAL CODES

DIMPLES  
X-ON MALE CONNECTORS ONLY

SHELL PLATING  
BLANK-ZINC  
T-STD. TIN LEAD Over Cu

OPTIONS  
BLANK - STANDARD  
G - HARPOON  
M - METAL BRACKET  
C - WITHOUT BRACKET

CONTACT PLATING  
64 - 200 MATING CYCLES  
65 - 500 MATING CYCLES



mat'l. code	surface	tolerance	projection	product family
-	ISO 1302 ✓	ISO 406 ISO 1101		D-SUB
ltr	ecn no	dr	date	title
G	I06-0074	GVJ	2006/06/08	D-SUB A/S CONNECTOR WITH FOOTPRINT 10.4 mm
H	I08-0139	MRA	2008/10/13	(WITH ASSEMBLY OPTIONS)
J	I09-0075	MRA	2009/05/14	
K	I11-0003	MRA	2011/01/06	dwg no
L	ELX-I-15429	MP	2013/08/06	sheet 1 of 1
M	ELX-I-20760	MP	2015/05/02	size
N	ELX-I-36806	GM	22-04-2020	A3
sheet	revision	N		type
index	sheet	1		Product Customer Drawing