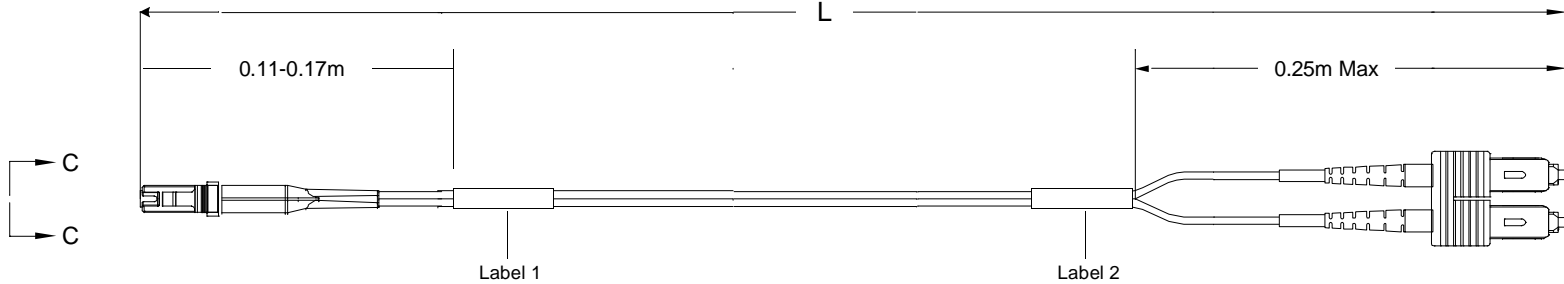


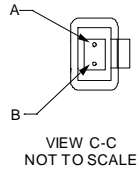
Restricted to: General Release

USED ON



**Left Side**

Connector(s): MT-RJ SECURE (No Pins)  
 Mode: MM  
 Housing Color: Green  
 Geom. Spec: 115-1215



**Fiber Path**

Fiber A - - B  
 Fiber B - - A

**Notes:**

- 1 Product and Processing must meet requirements of Tyco Electronics Standard 230-702
- 2 Label 2 will not be present on any cable assembly less than 5 meters long.
- 3 Includes dust caps (not shown on print).

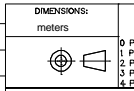
**Right Side**

Connector(s): SC-Duplex  
 Mode: MM  
 Housing Color: Beige  
 Geom. Spec: N/A

THIS INFORMATION IS CONFIDENTIAL AND PROPRIETARY TO TYCO ELECTRONICS CORPORATION. IT IS NOT TO BE DISCLOSED TO ANY OTHER PERSONS OR ORGANIZATIONS WITHOUT WRITTEN AUTHORIZATION FROM TYCO ELECTRONICS CORPORATION, HARRISBURG, PENNSYLVANIA.

LOC  
 CE  
 DIST  
 16

REV	DATE	BY	CHKD	APPD	
B	9/21/2006	MK			
Rev Per EC# ECR-06-020123					
P	LTR	REVISION RECORD	DATE	DIN	APVD



DIMENSIONS:	TOLERANCES UNLESS OTHERWISE SPECIFIED:
meters	0 PLC ± .
	1 PLC ± .
	2 PLC ± .
	3 PLC ± .
	4 PLC ± .

Customer Print

DIN	MATERIAL	HEAT TREAT
Cable Assy Configurator	-	-
CHK	Tyco Electronics, Inc. Harrisburg, PA 17105-3608	
APVD	Michael Kepko	
NAME	FO C/A - 2 fiber, XG - 50/125, OFNR (Riser) jacket, MT-RJ SECURE (No Pins) to SC-Duplex	
SCALE	SIZE	DRAWING NO
NTS	A2	C- 6754412
SHEET	REV	
1 of 3	B	

Restricted to: General Release

USED ON

THIS DRAWING IS A CONTROLLED DOCUMENT.

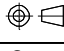
Part #	L (meters)	L (feet)	MT-RJ SECURE (No Pins), Green		SC-Duplex, Beige	
			IL (dB)	RL (dB)	IL (dB)	RL (dB)
0-6754412-1	0.950 - 1.050	3.11 - 3.44	0.5	20	0.5	-
0-6754412-2	1.950 - 2.050	6.39 - 6.72	0.5	20	0.5	-
0-6754412-3	2.950 - 3.050	9.67 - 10.00	0.5	20	0.5	-
0-6754412-4	3.920 - 4.080	12.86 - 13.38	0.51	20	0.51	-
0-6754412-5	4.920 - 5.080	16.14 - 16.66	0.51	20	0.51	-
0-6754412-6	5.920 - 6.080	19.42 - 19.94	0.51	20	0.51	-
0-6754412-7	6.920 - 7.080	22.70 - 23.22	0.51	20	0.51	-
0-6754412-8	7.920 - 8.080	25.98 - 26.50	0.51	20	0.51	-
0-6754412-9	8.850 - 9.150	29.03 - 30.01	0.51	20	0.51	-
1-6754412-0	9.850 - 10.150	32.31 - 33.30	0.52	20	0.52	-
1-6754412-1	10.850 - 11.150	35.59 - 36.58	0.52	20	0.52	-
1-6754412-2	11.850 - 12.150	38.87 - 39.86	0.52	20	0.52	-
1-6754412-3	12.850 - 13.150	42.15 - 43.14	0.52	20	0.52	-
1-6754412-4	13.850 - 14.150	45.43 - 46.42	0.52	20	0.52	-
1-6754412-5	14.850 - 15.150	48.72 - 49.70	0.52	20	0.52	-
1-6754412-6	15.840 - 16.160	51.96 - 53.01	0.52	20	0.52	-
1-6754412-7	16.830 - 17.170	55.21 - 56.33	0.53	20	0.53	-
1-6754412-8	17.820 - 18.180	58.46 - 59.64	0.53	20	0.53	-
1-6754412-9	18.810 - 19.190	61.71 - 62.95	0.53	20	0.53	-
2-6754412-0	19.800 - 20.200	64.96 - 66.27	0.53	20	0.53	-
2-6754412-1	20.790 - 21.210	68.20 - 69.58	0.53	20	0.53	-
2-6754412-2	21.780 - 22.220	71.45 - 72.90	0.53	20	0.53	-
2-6754412-3	22.770 - 23.230	74.70 - 76.21	0.53	20	0.53	-
2-6754412-4	23.760 - 24.240	77.95 - 79.52	0.54	20	0.54	-
2-6754412-5	24.750 - 25.250	81.20 - 82.84	0.54	20	0.54	-
2-6754412-6	25.740 - 26.260	84.44 - 86.15	0.54	20	0.54	-
2-6754412-7	26.730 - 27.270	87.69 - 89.46	0.54	20	0.54	-
2-6754412-8	27.720 - 28.280	90.94 - 92.78	0.54	20	0.54	-
2-6754412-9	28.710 - 29.290	94.19 - 96.09	0.54	20	0.54	-
3-6754412-0	29.700 - 30.300	97.44 - 99.40	0.55	20	0.55	-
3-6754412-1	30.690 - 31.310	100.68 - 102.72	0.55	20	0.55	-
3-6754412-2	31.680 - 32.320	103.93 - 106.03	0.55	20	0.55	-
3-6754412-3	32.670 - 33.330	107.18 - 109.35	0.55	20	0.55	-
3-6754412-4	33.660 - 34.340	110.43 - 112.66	0.55	20	0.55	-
3-6754412-5	34.650 - 35.350	113.68 - 115.97	0.55	20	0.55	-
3-6754412-6	35.640 - 36.360	116.92 - 119.29	0.55	20	0.55	-
3-6754412-7	36.630 - 37.370	120.17 - 122.60	0.56	20	0.56	-
3-6754412-8	37.620 - 38.380	123.42 - 125.91	0.56	20	0.56	-
3-6754412-9	38.610 - 39.390	126.67 - 129.23	0.56	20	0.56	-
4-6754412-0	39.600 - 40.400	129.92 - 132.54	0.56	20	0.56	-
5-6754412-0	49.500 - 50.500	162.40 - 165.68	0.58	20	0.58	-


Qty	U of M	Description	Item No.
1	piece	DUST COVER, MT-RJ	1
1	piece	SPRING, MT-RJ, 3.8 DESIGN	2
1	piece	PIN KEEPER, 3.8MM	3
1	piece	MT-RJ, SPRING PUSH, UNIVERSAL	4
1	piece	CRIMP EYELET, MT-RJ	5
1	piece	MT-RJ Keyed Connector Housing - Green	6
2	piece	LC, SC, FC Straight Boot, Beige	7
1	piece	MT-RJ FERRULE, THERMOPLAST,MM	8
2	piece	SC Simplex Housing, Beige	9
2	piece	2.5mm ferrule cover	10
AR	meter	2 fiber, XG-50/125, 1.8mm, Twinzip, Aqua, OFNR (Riser)	11
1	piece	MT-RJ TwinZip Bend Limiting Boot, Beige	12
2	piece	SC Duplex Clip	13
2	piece	Eyelet/Shrink tube assembly - White	14
2	piece	CONN SUBASSY, MM, SC 1.6MM	15
2	piece	Trace Label	16

THIS INFORMATION IS CONFIDENTIAL AND PROPRIETARY TO TYCO ELECTRONICS CORPORATION. IT IS THE PROPERTY OF TYCO ELECTRONICS CORPORATION AND IS NOT TO BE DISCLOSED TO ANY OTHER PERSON OR ENTITY WITHOUT THE WRITTEN AUTHORIZATION OF TYCO ELECTRONICS CORPORATION, HARRISBURG, PENNSYLVANIA.

LOC  
CE  
DIST  
16

B	Rev Per	EC#	ECR-06-020123	9/21/2006	-	MK	
P	LTR		REVISION RECORD	DATE		DIN	APVD

DIMENSIONS: meters  
 TOLERANCES UNLESS OTHERWISE SPECIFIED:  
 9 P.L.C ± .  
 1 P.L.C ± .  
 2 P.L.C ± .  
 3 P.L.C ± .  
 4 P.L.C ± .  


DIN	Cable Assy Configurator	MATERIAL		HEAT TREAT	
OK	Michael Kepko				
APVD	Michael Kepko				
NAME	FO C/A - 2 fiber, XG - 50/125, OFNR (Riser) jacket, MT-RJ SECURE (No Pins) to SC-Duplex				
SCALE	NTS	SIZE	A2	DRAWING NO	C- 6754412
SHEET	2 of 3	REV	B		

D

C

B

A

THIS DRAWING IS A CONTROLLED DOCUMENT.

**Label 1**

Per specification 107-1645-1



Trace # - Bar Code  
 Trace # - Human Readable  
 Part Number  
 Country of Origin

This label is used on all lengths on this drawing.

**Label 2**

Per specification 107-1645-1



Trace # - Bar Code  
 Trace # - Human Readable  
 Part Number  
 Country of Origin

This label is used on all lengths on this drawing.

THIS INFORMATION IS CONFIDENTIAL AND PROPRIETARY TO TYCO ELECTRONICS CORPORATION. IT IS THE PROPERTY OF TYCO ELECTRONICS CORPORATION AND IS NOT TO BE DISCLOSED TO ANY OTHER PERSON OR ENTITY WITHOUT THE WRITTEN AUTHORIZATION OF TYCO ELECTRONICS CORPORATION, HARRISBURG, PENNSYLVANIA

LOC  
 CE  
 DIST  
 16

B	Rev Per EC#	ECR-06-020123	8/21/2006	-	MK	
P	LTR	REVISION RECORD	DATE	DIN	APVD	

DIMENSIONS: meters	TOLERANCES UNLESS OTHERWISE SPECIFIED:
0 PLC	± .
1 PLC	± .
2 PLC	± .
3 PLC	± .
4 PLC	± .



Customer Print

DIN	Cable Assy Configurator	MATERIAL	HEAT TREAT
OK	Michael Kepko		
APVD	Michael Kepko	<b>AMP</b> Tyco Electronics, Inc. Harrisburg, PA 17105-3608	
NAME	FO C/A - 2 fiber, XG - 50/125, OFNR (Riser) jacket, MT-RJ SECURE (No Pins) to SC-Duplex		
SCALE	SIZE	DRAWING NO	SHEET
NTS	A2	<b>C- 6754412</b>	3 of 3
			REV <b>B</b>

A  
B  
C  
D