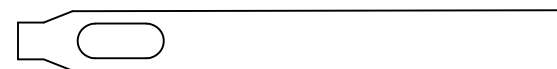
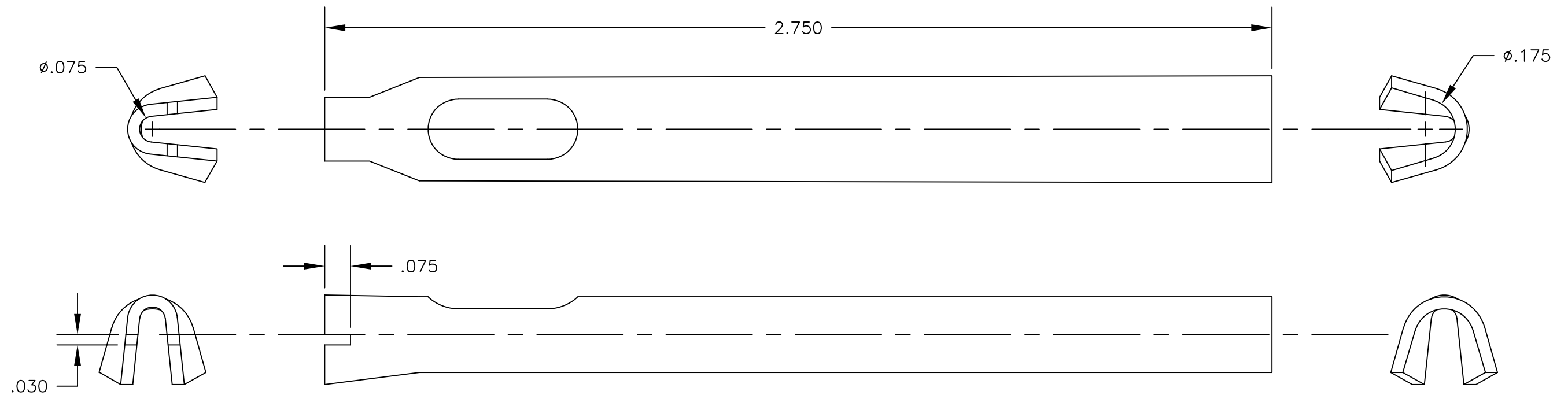


NOTES: UNLESS OTHERWISE SPECIFIED

1. CONSTRUCTION:
COPPER, NICKEL & TIN PLATED STEEL.

2. FEATURES:
DRIVE E-Z-NAIL CLIPS P/N 81-1, 83-8 & 84-1

LTR	REVISIONS		DATE	APPROVED
	DESCRIPTION			



ACTUAL SIZE

		UNLESS OTHERWISE SPECIFIED DIMENSIONS ARE IN INCHES TOLERANCES ARE: FRACTIONS DECIMALS ANGLES ± N/A .XX ± N/A ± N/A .XXX ± N/A	CONTRACT NO.		E-Z-HOOK DIVISION OF TEKTEST INC. ARCADIA, CA 91006 U.S.A.
			APPROVALS	DATE	
		MATERIAL SEE NOTES	DRAWN R.L	4/19	DESCRIPTION 81 SERIES NAIL CLIP DRIVING TOOL
		FINISH SEE NOTES	APPROVED BY		
NEXT ASSY	USED ON				SIZE B
APPLICATION		DO NOT SCALE DRAWING			CODE IDENT NO. 08505
					DRAWING NO. T20
					SCALE 3:1
					REV.
					SHEET 1 OF 1