

4

3

2

1

DRAWING MADE IN THIRD ANGLE PROJECTION

THIS DRAWING IS UNPUBLISHED. RELEASED FOR PUBLICATION . 19 .  
 © COPYRIGHT 19 BY AMP INCORPORATED, HARRISBURG, PA. ALL INTERNATIONAL RIGHTS RESERVED. AMP PRODUCTS MAY BE COVERED BY U.S. AND FOREIGN PATENTS AND/OR PATENTS PENDING

LOC	DIST	P	F	REVISIONS			
				ZONE	LTR	DATE	APPR
AD	14			0	REL PER 86-5256-216	6/4/87	PF
				A	REV PER AD1948	10/87	LW
				B	REV PER AD2378	4/88	CP
				C	REV PER AD2670	6/88	CP

Technical drawing of a key plug (FIG. 1) showing dimensions: 45° TYP, .610, .269, .020, .150, .103, .068, 30°.

△ MATERIAL 94-VO POLYESTER, COLOR: NATURAL

3D perspective view of the key plug (FIG. 1) with a dimension of .610 LONG.

FIG. 1

Technical drawing of a key plug (FIG. 2) showing dimensions: .033, .057.

FIG. 2	KEY PLUG, SHCRT	650025-2
FIG. 1	KEY PLUG, LONG	650025-1
LENGTH	DESCRIPTION	PART NO

UNLESS OTHERWISE SPECIFIED DIMENSIONS ARE IN INCHES TOLERANCES ON: 2 PL DEC ± — 3 PL DEC ± .005 ANGLES ± 3'	DR <i>C. PIERCE</i> 1-16-87	<b>AMP</b>   AMP INCORPORATED Harrisburg, Pa. 17105		
	CHK <i>J. DIORAZIO</i>			
	MATERIAL △	APPD <i>J. DIORAZIO</i>	NAME <b>KEY PLUG INTERCONTACT</b>	
	FINISH	PRODUCT SPEC		
	APPLICATION SPEC	SIZE <b>C</b>	FSCM NO <b>00779</b>	DRAWING NO <b>650025</b>
	WEIGHT	SCALE 10:1		SHEET 1 OF 2

AMP 1471-7 REV 10-84

CUSTOMER DRAWING

650025

THIS DRAWING IS UNPUBLISHED. RELEASED FOR PUBLICATION . 19 .  
© COPYRIGHT 19 BY AMP INCORPORATED, HARRISBURG, PA. ALL INTERNATIONAL RIGHTS RESERVED. AMP PRODUCTS MAY BE COVERED BY U.S. AND FOREIGN PATENTS AND/OR PATENTS PENDING

LOC	DIST	P	F	ZONE	LTR	DESCRIPTION	DATE	APPR
AD	14					SEE SHEET ONE		

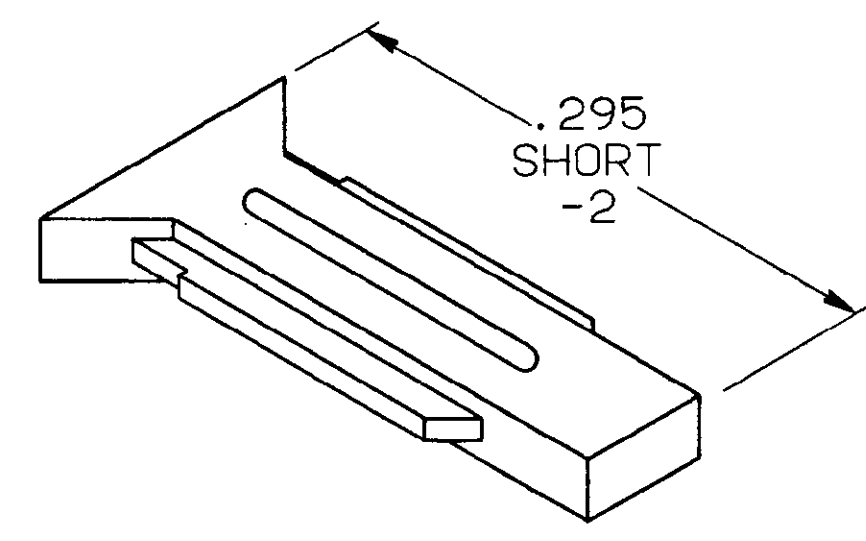
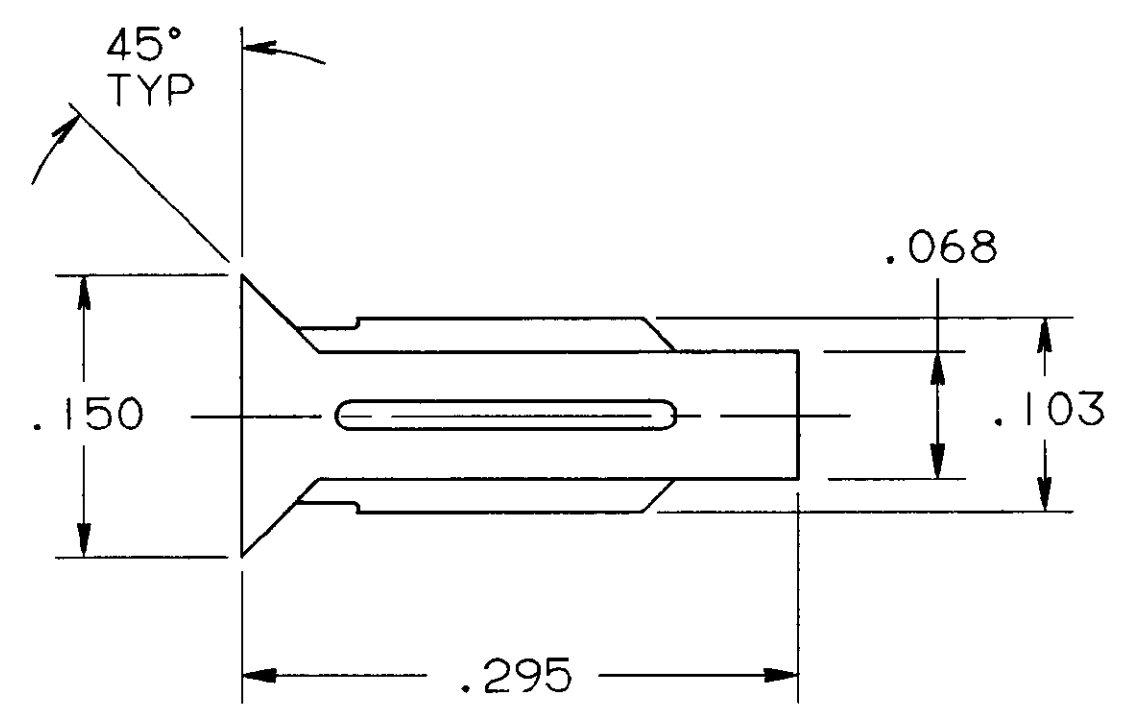
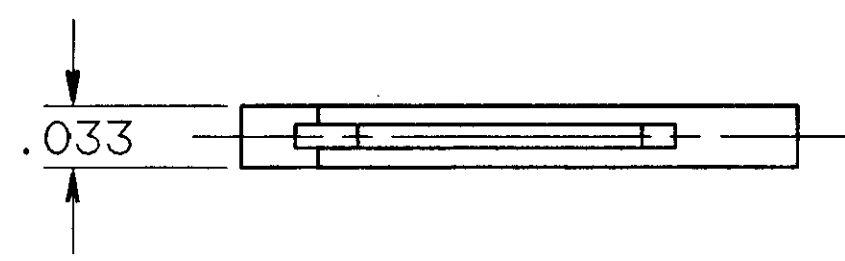


FIG. 2



650025

UNLESS OTHERWISE SPECIFIED DIMENSIONS ARE IN INCHES TOLERANCES ON: 2 PL DEC * — 3 PL DEC * — ANGLES ± 3°	DR <i>C. PIERCE</i> 1-16-87	<b>AMP</b>   AMP INCORPORATED Harrisburg, Pa. 17105		
	CHK <i>J. DIORAZIO</i>			
	MATERIAL	NAME KEY PLUG INTERCONTACT		
	FINISH	APPD <i>J. DIORAZIO</i>	SIZE <b>C</b>	FSCM NO <b>00779</b>
	PRODUCT SPEC	SCALE 10:1	SHEET 2 OF 2	
	APPLICATION SPEC			
	WEIGHT			