

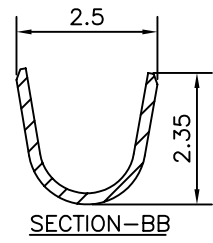
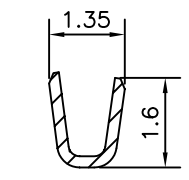
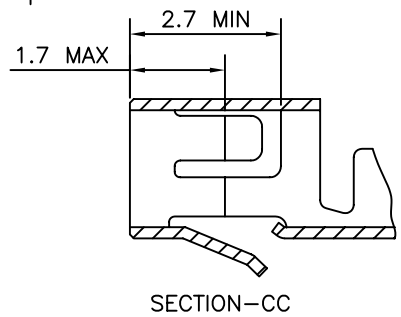
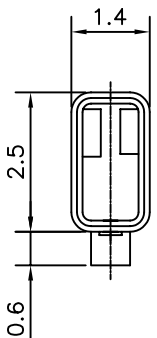
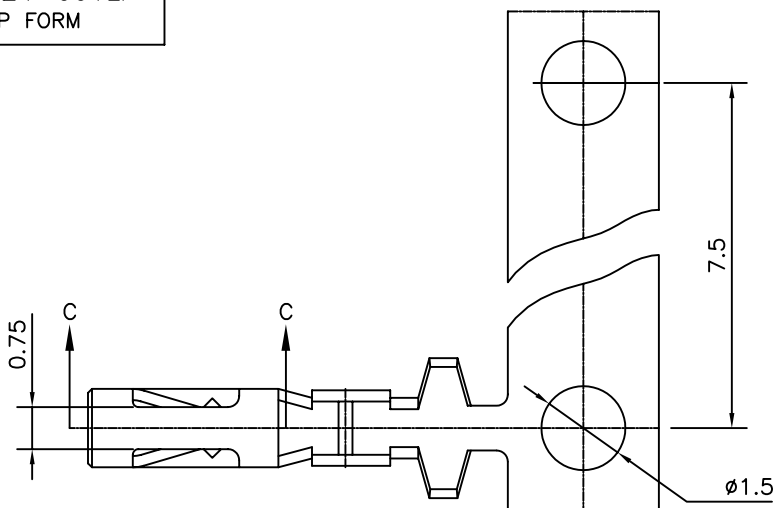
PART NO. 76624-001LF
STRIP FORM

A

B

C

D



TECHNICAL DATA:

PHYSICAL:
MATERIAL - PHOSPHER BRONZE
PLATING - 1μ MIN. TIN PLATED

ELECTRICAL PERFORMANCE:
CURRENT RATING - 2 AMP. DC
CONTACT RESISTANCE - 20mΩ.Max.

PACKAGING:
REEL - 4000 PCS PER REEL

1.LF Products meet European Union Directives and other country Regulations as described in GS-22-008.
2.Lead Free or ROHS Directive labelling to be provided as per GS-14-920 for Lead Free version.



FCIconnect.com

Copyright FCI

mat'l. code				surface ISO 1302 ✓		tolerance ISO 406 ISO 1101		projection		product family RELIMATE	
ltr				ecn no		dr		date		title	
H				106-0023		HVN		2006-07-20		RELIMATE TERMINAL (AWG#22-#26)	
J				110-0147		NPM		2010-07-10		scale 8:1	
				angles		linear		±0.1		dwg no	
				±1°				-		sheet 1 of 1	
				dr		MINI K VANDANATH		2003-04-14		size	
				enr		HIRAN.V.N		2003-04-14		5	
				chr		NEBUPM		2010-07-10		A4	
				appd		NEBUPM		2010-07-10		type	
sheet index				revision sheet		J		1		Product Customer Drawing	

