

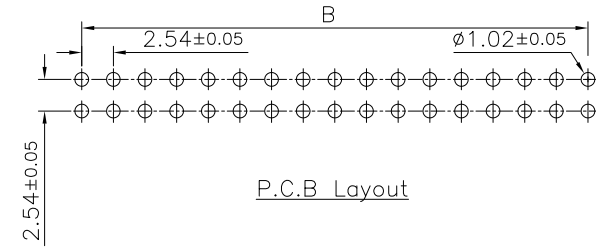
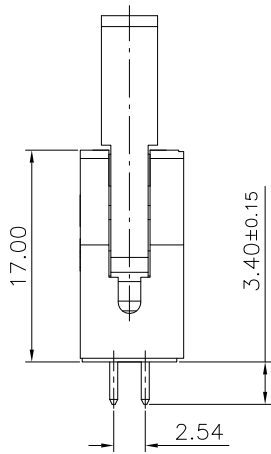
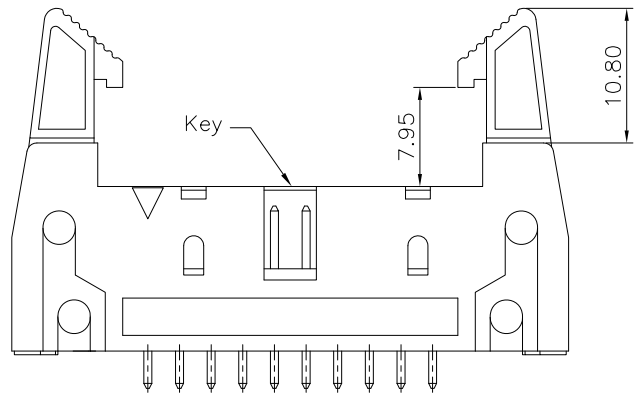
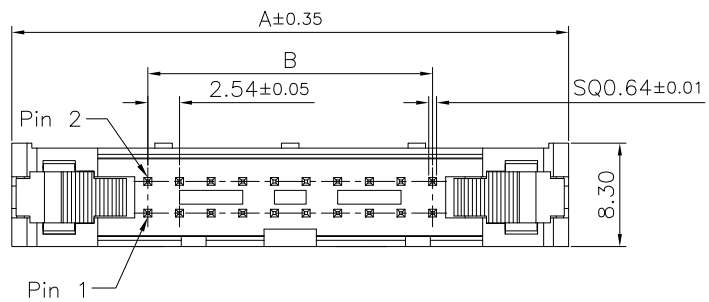
1

2

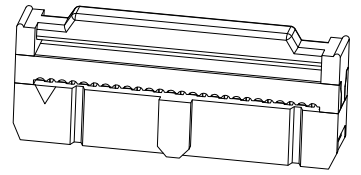
3

4

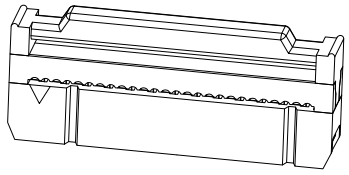
5



MATING PART
3030-XX-0103-00



MATING PART
3030-XX-0104-00



Specifications
 Current Rating:3.0A AC/DC
 Voltage Rating:250V AC/DC
 Contact Resistance:20m ohm. Max
 Insulation Resistance:1000M ohm. Min
 Withstanding Voltage:600V AC For one minute
 Operating Temperature Range : -40°C to +105°C

Material:
 Plastic:PBT (UL94V-0)
 Standard Color:Black
 Contact:Copper Alloy
 Plating:Gold Plated

Notes:
 60P、64P With Three Key
 All Other Pin With One Key

Circuits	Dim A	Dim B	Circuits	Dim A	Dim B
6	27.12	5.08	26	52.52	30.48
8	29.66	7.62	30	57.60	35.56
10	32.20	10.16	34	62.68	40.64
12	34.74	12.70	40	70.30	48.26
14	37.28	15.24	50	83.00	60.96
16	39.82	17.78	60	95.70	73.66
20	44.90	22.86	64	100.78	78.74
24	49.98	27.94			

RoHS Compliant

REV	DATE	FILE	BY
	05-FEB-2020		

DRAWN:
 CHECKED:
 APPROVAL:

GENERAL TOLERANCE:
 .X=±0.20
 .XX=±0.15
 UNIT: MM
 SCALE:1:1
 SHEET: 1 / 1
 PROJECTION:

CnC Tech
 Industrial Cable and Connector Technology
 DESCRIPTION:
 2.54mm Shrouded Header With Ejector Straight Type
 PART NO:
 3010-XX-001-13-00

SIZE
 A4