

## Xadow - BLE (dual model)

SKU 113040007

### Description

Xadow - BLE (dual model) v1.0 uses CSR dual mode Bluetooth chip, with the ARM architecture single chip which supports AT instructions. Users can develop flexibly according to the serial baud rate, equipment name, pairing password.

**Notice: This module is not compatible with any other Xadow version 2 or RePhone modules.**

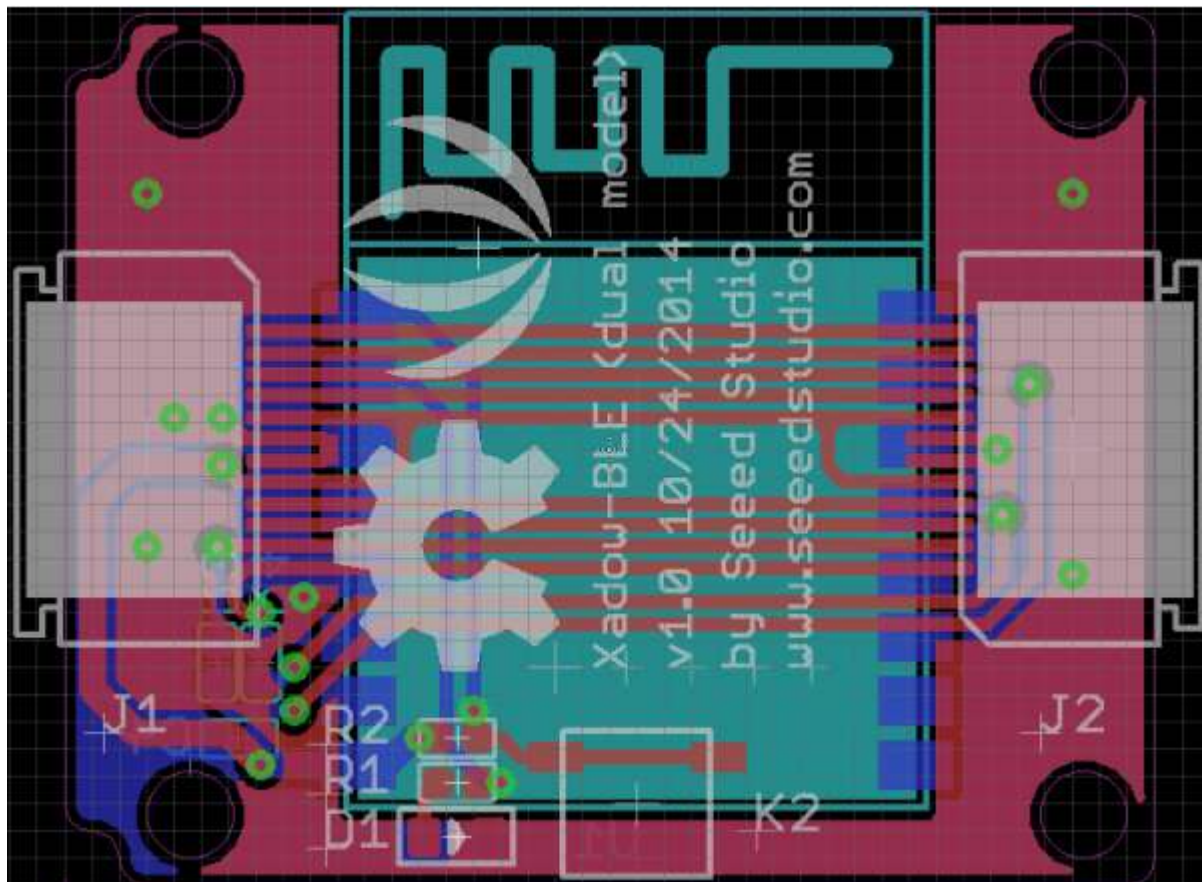
---

### KEY FEATURES

- - BT Version: Bluetooth Specification V4.0 & BLE
- - UART send and receive max bytes is 512
- - Other device to module in SPP mode: 90 Bytes per packet
- - Other device to module in BLE mode: 20 Bytes per packet
- - Two data transmission mode, balance mode and high speed mode

- - Working frequency: 2.4GHz ISM band
- - Modulation method: GFSK(Gaussian Frequency Shift Keying)
- - RF Power: -23dbm, -6dbm, 0dbm, 6dbm.
- - Speed: Asynchronous: 3K Bytes
- - Synchronous: 3K Bytes
- - Security: Authentication and encryption
- - Service: Slave SPP, Peripheral BLE, UUID FFE0,FFE1
- - Power: +3.3VDC 50mA
- - Long range: SPP 30 meters, BLE 60 meters
- - Power: SPP 13.5mA, BLE 9.5mA
- - Working temperature:-5 ~ +65 Centigrade

• SPECIFICATION



**K2:**During connected status,It would be disconnected by pressing K2 more than 100ms.During sleeping model,It could be restored through pressing K2 factory settings.

**D1:**The led display two work models: sleeping whit It slowly flashing;connected status whit It continuously lighting.

**J1&J2:**The standard Xadow connector.

---

## DOCUMENTS

Please visit our [wiki](#) page for more info about this product. It will be appreciated if you can help us improve the documents, add more demo code or tutorials. For technical support, please post your questions to our [forum](#).

### Technical Details

Dimensions	0mm x 0mm x 0mm
Weight	G.W 11g
Battery	Exclude

### ECCN/HTS

ECCN	Not Available
HSCODE	8517709000

