

REVISION J

RCU-X-XX.XX-AMS-AMS BOM			
ITEM NO.	PART NUMBER	QTY	DESCRIPTION
1	UCA-03-01	XX.XX	CABLE
2	USBP-A-01-G-B-01	2	CONNECTOR
3	LTC-14-02-N	4	LATCH
4	MD-PTC-RF-640-BK	1	PREMOLD
5	MD-NYL-ZY-70G13-BK	1	OVERMOLD
6	LABEL-ET	1	LABEL

DESIGNED & DIMENSIONED IN MILLIMETERS [INCHES]

RCU-X-XX.XX-XXX-XXX

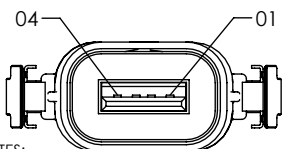
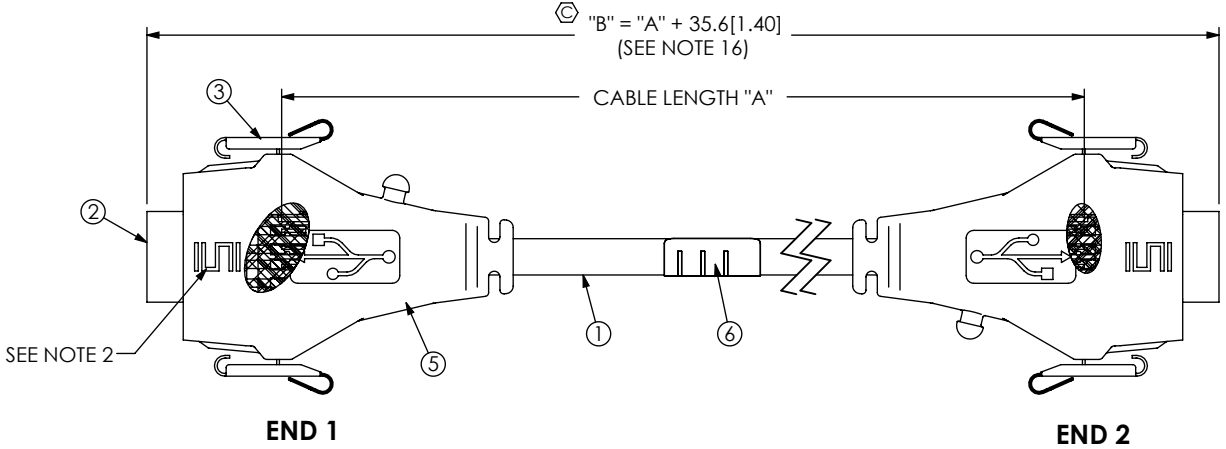
**PLATING SPECIFICATION**  
 -G: .000030 GOLD ON CONTACT AREAS, NICKEL ON SHELLS

**CABLE LENGTH**  
 -XX.XX: "A"  
 (0.25M [9.842] MIN - 50.00M [1968.504] MAX)

**END 1 OPTION**  
 -AMS: SEALED USB A (USB A END SEALED ONLY)  
 -BMS: SEALED USB B (USB B END SEALED ONLY)

**END 2 OPTION**  
 -AMS: USB A SEALED (USB A SEALED ONLY) (SEE FIG 1)  
 -AM: USB A NOT SEALED (USB A END NOT SEALED ONLY) (SEE SHEET 2, FIG 2)  
 -BC: BLUNT CUT (SEE SHEET 2, FIG 3)  
 -BM: USB B NOT SEALED (USB B END NOT SEALED) (SEE SHEET 3, FIG 4)  
 -BMS: USB B SEALED (USB B SEALED ONLY) (SHEET 3, FIG 5)

DO NOT SCALE FROM THIS PRINT



NOTES:

- ⊗ REPRESENTS A CRITICAL DIMENSION.
- SAMTEC LOGO TO APPEAR ON SURFACE AS SHOWN, APPROXIMATELY 6.00 [236] X 3.75 [148].
- MOLDED SURFACES SHALL BE CONSISTENT AND SMOOTH. SURFACES TO BE FREE OF SCRATCHES, NICKS, SINK AREAS, VOIDS, OR OTHER BLEMISHES.
- ALL MULTIPLE CAVITY MOLDS SHALL IDENTIFY EACH CAVITY WITH A NUMBER DESIGNATION LOCATED WHERE SHOWN.
- ALL IDENTIFICATION MARKS SHALL NOT STAND GREATER THAN 0.05 [002] OFF THE SURFACE OF THE PART.
- MOLD TO BE INSERTED TO ACCEPT DIFFERENT CABLE DIAMETERS.
- SURFACE TO BE RECESSED 0.22 [009].
- USB LOGO TO BE RAISED 0.25 [010].
- USB LOGO'S TO BE ALIGNED TO USB CONNECTORS AS SHOWN.
- LENGTHS GREATER THAN 05.00M [196.850] ARE NOT SUPPORTED BY USB 2.0 TEST DATA.
- ASSEMBLY TO BE 100% ELECTRICAL TESTED FOR OPENS AND SHORTS, HI-POT TESTED AT 200V BEFORE PREMOLD AND AFTER FINAL ASSEMBLY. AFTER FINAL ELECTRICAL TEST, LABEL EACH ASSEMBLY WITH 1 LABEL-ET.
- ALL EJECTION PIN AND GATE LOCATIONS MUST BE APPROVED BY SAMTEC PRODUCT ENGINEERING.
- ANY ADDITIONAL VOIDING AND/OR MODIFICATIONS TO VOIDING MUST BE APPROVED BY SAMTEC PRODUCT ENGINEERING.
- ALL DRAFT MUST BE WITHIN THE SPECIFIED TOLERANCES.
- ALL INSIDE/OUTSIDE RADII 0.13 [005] MAX UNLESS OTHERWISE STATED.
- TOLERANCE SHALL BE ± 2% FOR ALL LENGTHS.
- MINIMUM LATCH PUSH OUT FORCE: 2.2N [50LB].
- THIS IS A COMPONENT OF USBP-A-01-G-B-01 (CALLED OUT ON THE BOM), BUT LABELED INDIVIDUALLY FOR ASSEMBLY PURPOSES.
- THIS IS A COMPONENT OF USBP-B-01-G-B-01 (CALLED OUT ON THE BOM), BUT LABELED INDIVIDUALLY FOR ASSEMBLY PURPOSES.
- ASSEMBLY TO BE SHIPPED IN BULK PACKAGED WITH ASBBLT4X5.5 ON EACH END PER PACKAGING STANDARD CO-RF-WI-3001-M.
- NOTE DELETED.
- ANY CHANGE MADE TO -AM & -BM OVERMOLD MUST BE MADE TO SCPU-17-XX.XX-XXX-XXX.
- THIS IS A COMPONENT OF USBP-B-02-G-B-01 (CALLED OUT ON THE BOM), BUT LABELED INDIVIDUALLY FOR ASSEMBLY PURPOSES.
- MEASURE OVERMOLD IN BOTH CORNERS AND IN THE MIDDLE OF THE PART.
- USE TABLE 3, SHT 5 AND THE FIGURES BELOW FOR PIN NUMBERING AND WIRE COLOR; IGNORE ANY NUMBERING ON THE BODIES.

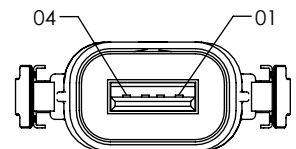
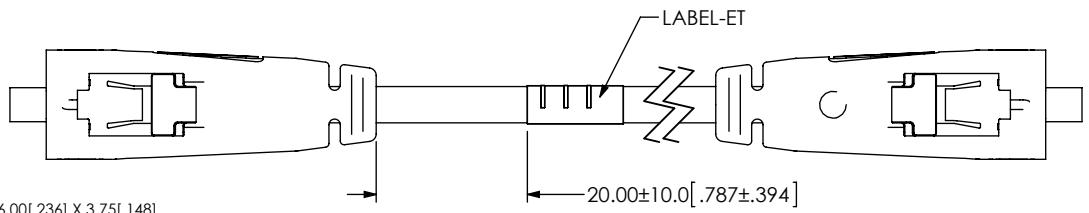


FIG 1  
 RCU-X-XX.XX-AMS SHOWN

F:\DWG\MISC\MKTG\RCU-X-XX.XX-XXX-XXX-MKT.SLDDRW

UNLESS OTHERWISE SPECIFIED, DIMENSIONS ARE IN MILLIMETERS. TOLERANCES ARE:  
 DECIMALS ANGLES  
 X.X: ±0.3 [01] 2°  
 X.XX: ±0.13 [005]  
 X.XXX: ±0.051 [0020]

**PROPRIETARY NOTE**  
 THIS DOCUMENT CONTAINS INFORMATION CONFIDENTIAL AND PROPRIETARY TO SAMTEC, INC. AND SHALL NOT BE REPRODUCED OR TRANSFERRED TO OTHER DOCUMENTS OR DISCLOSED TO OTHERS OR USED FOR ANY PURPOSE OTHER THAN THAT WHICH IT WAS OBTAINED WITHOUT THE EXPRESSED WRITTEN CONSENT OF SAMTEC, INC.

**samtec**  
 520 PARK EAST BLVD, NEW ALBANY, IN 47150  
 PHONE: 812-944-6733 FAX: 812-948-5047  
 e-Mail: info@SAMTEC.com code 53322

**MATERIAL:** DO NOT SCALE DRAWING SHEET SCALE: 1:1  
 CABLE: PVC, COPPER, PET  
 CONNECTOR: GLASS FILLED THERMOPLASTIC, COPPER ALLOY  
 LATCH: BeCu  
 PREMOLD: PTC  
 OVERMOLD: PAGG, MAX REGRIND: 10%  
 NON-SEALED OVERMOLD: PVC, MAX REGRIND: 30%

DESCRIPTION: RECTANGULAR CABLE USB  
 DWG. NO. RCU-X-XX.XX-XXX-XXX  
 BY: T NEWTON 02/17/2010 SHEET 1 OF 10

RCU-X-XX.XX-AMS-AM BOM			
ITEM NO.	PART NUMBER	QTY	DESCRIPTION
1	UCA-03-01	XX.XX	CABLE
2	USBP-A-01-G-B-01	2	CONNECTOR
3	LTC-14-02-N	2	LATCH
4	MD-PTC-RF-640-BK	1	PREMOLD
5	MD-NYL-ZY-70G13-BK	1	OVERMOLD
6	LABEL-ET	1	LABEL
7	MD-PVC-AL-41175-BK	1	NON-SEALED OVERMOLD

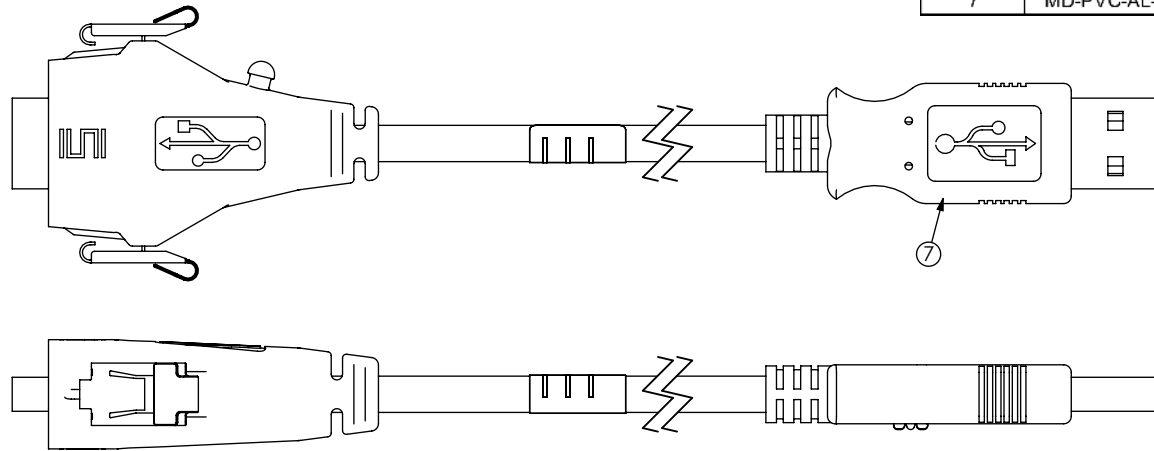


FIG 2  
RCU-X-XX.XX-AMS-AM SHOWN  
(SAME AS FIG 1, EXCEPT AS SHOWN)

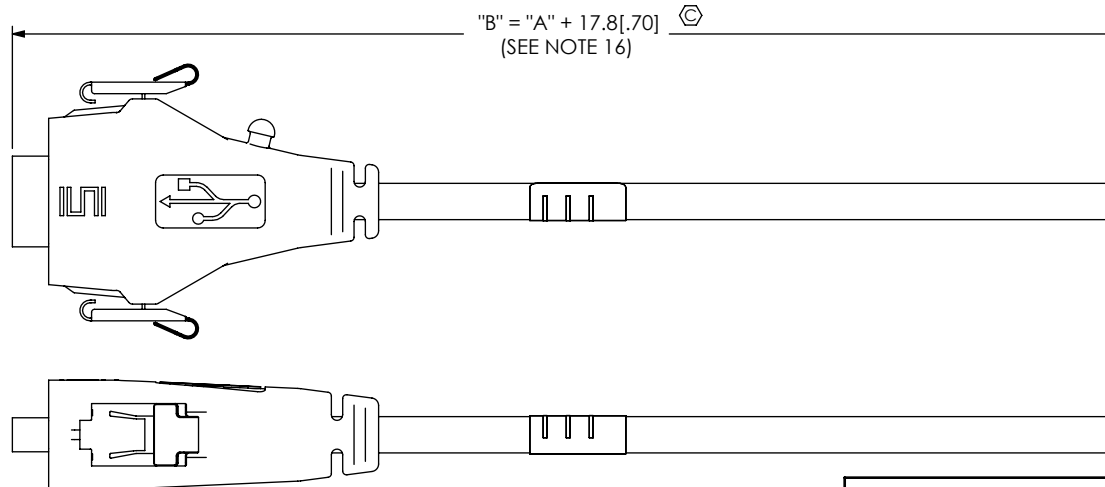


FIG 3  
RCU-X-XX.XX-AMS-BC SHOWN  
(SAME AS FIG 1, EXCEPT AS SHOWN)

**PROPRIETARY NOTE**  
THIS DOCUMENT CONTAINS INFORMATION CONFIDENTIAL AND PROPRIETARY TO SAMTEC, INC. AND SHALL NOT BE REPRODUCED OR TRANSFERRED TO OTHER DOCUMENTS OR DISCLOSED TO OTHERS OR USED FOR ANY PURPOSE OTHER THAN THAT WHICH IT WAS OBTAINED WITHOUT THE EXPRESSED WRITTEN CONSENT OF SAMTEC, INC.

DO NOT SCALE DRAWING

SHEET SCALE: 1:1

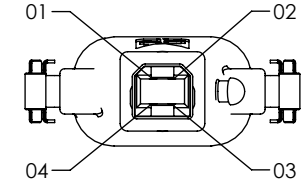
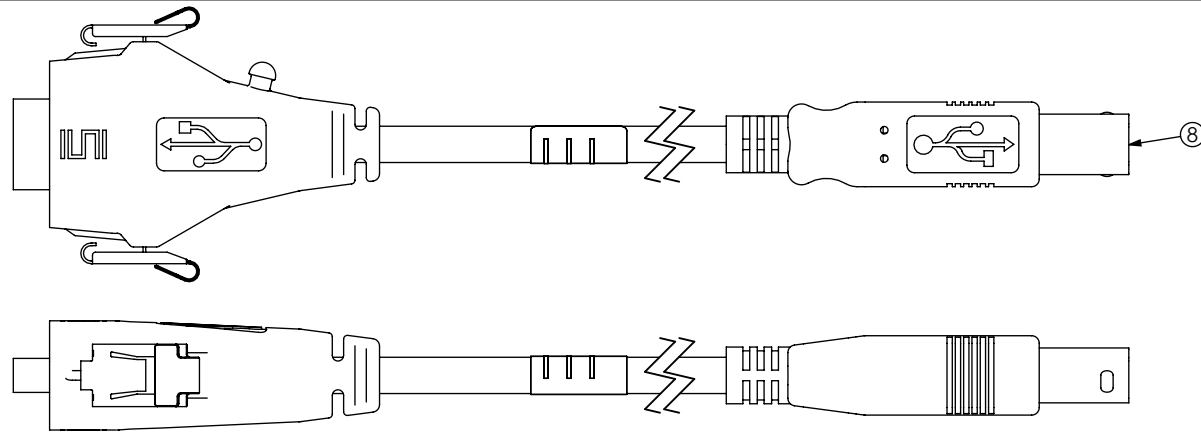
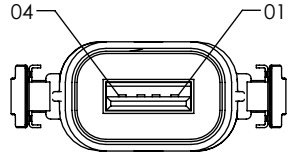
**samtec**

520 PARK EAST BLVD, NEW ALBANY, IN 47150  
PHONE: 812-944-6733 FAX: 812-948-5047  
e-Mail info@SAMTEC.com code 55322

DESCRIPTION:  
RECTANGULAR CABLE USB

DWG. NO.  
**RCU-X-XX.XX-XXX-XXX**

BY: T NEWTON 02/17/2010 SHEET 2 OF 10



RCU-X-XX.XX-AMS-BM BOM			
ITEM NO.	PART NUMBER	QTY	DESCRIPTION
1	UCA-03-01	XX.XX	CABLE
2	USBP-A-01-G-B-01	1	CONNECTOR
3	LTC-14-02-N	2	LATCH
4	MD-PTC-RF-640-BK	1	PREMOLD
5	MD-NYL-ZY-70G13-BK	1	OVERMOLD
6	LABEL-ET	1	LABEL
7	MD-PVC-AL-41175-BK	1	NON-SEALED OVERMOLD
8	USBP-B-01-G-B-01	1	CONNECTOR

FIG 4  
RCU-X-XX.XX-AMS-BM SHOWN  
(SAME AS FIG 1, EXCEPT AS SHOWN)

ITEM NO.	PART NUMBER	QTY	DESCRIPTION
1	UCA-03-01	XX.XX	CABLE
2	USBP-A-01-G-B-01	1	CONNECTOR
3	LTC-14-02-N	4	LATCH
4	MD-PTC-RF-640-BK	1	PREMOLD
5	MD-NYL-ZY-70G13-BK	1	OVERMOLD
6	LABEL-ET	1	LABEL
7	USBP-B-02-G-B-01	1	CONNECTOR

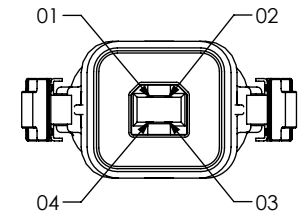
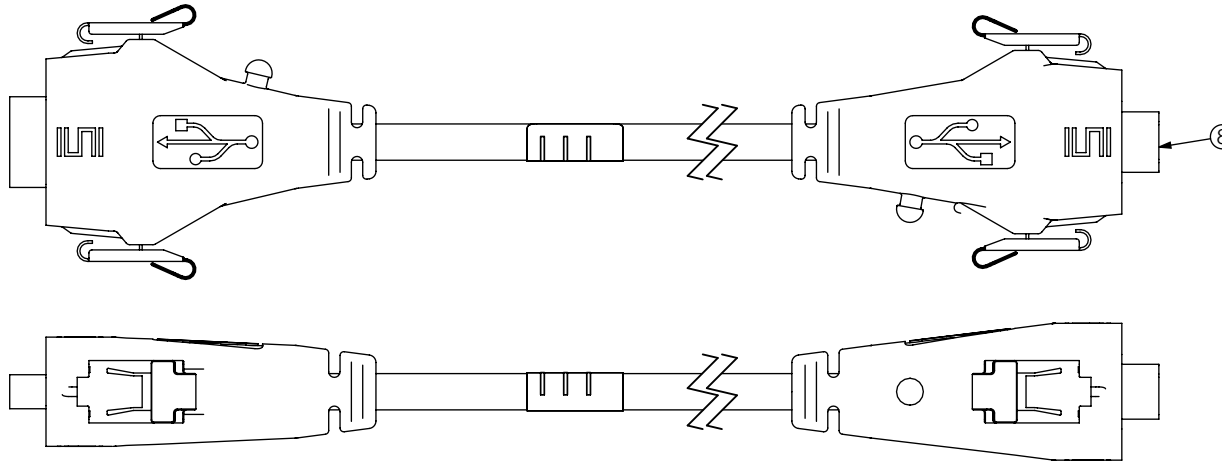
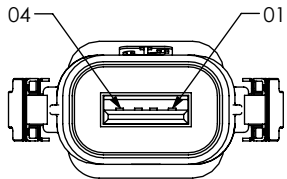


FIG 5  
RCU-X-XX.XX-AMS-BMS SHOWN  
(SAME AS FIG 1, EXCEPT AS SHOWN)

**PROPRIETARY NOTE**  
THIS DOCUMENT CONTAINS INFORMATION CONFIDENTIAL AND PROPRIETARY TO SAMTEC, INC. AND SHALL NOT BE REPRODUCED OR TRANSFERRED TO OTHER DOCUMENTS OR DISCLOSED TO OTHERS OR USED FOR ANY PURPOSE OTHER THAN THAT WHICH IT WAS OBTAINED WITHOUT THE EXPRESSED WRITTEN CONSENT OF SAMTEC, INC.

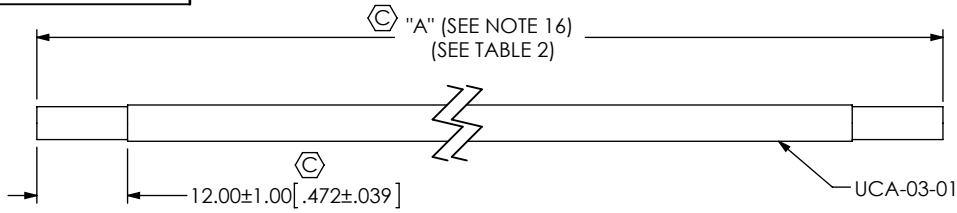
DO NOT SCALE DRAWING

SHEET SCALE: 1:1



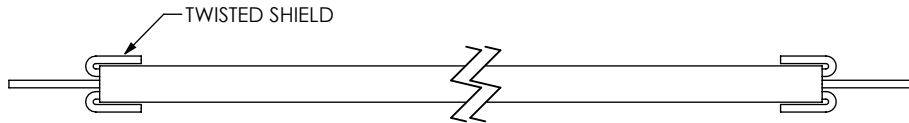
520 PARK EAST BLVD, NEW ALBANY, IN 47150  
PHONE: 812-944-6733 FAX: 812-948-5047  
e-Mail info@SAMTEC.com code 55322

DESCRIPTION:	RECTANGULAR CABLE USB
DWG. NO.	RCU-X-XX.XX-XXX-XXX
BY: T NEWTON 02/17/2010	SHEET 3 OF 10



**IN-PROCESS 1**  
CUT CABLE TO LENGTH AND STRIP OUTER JACKET

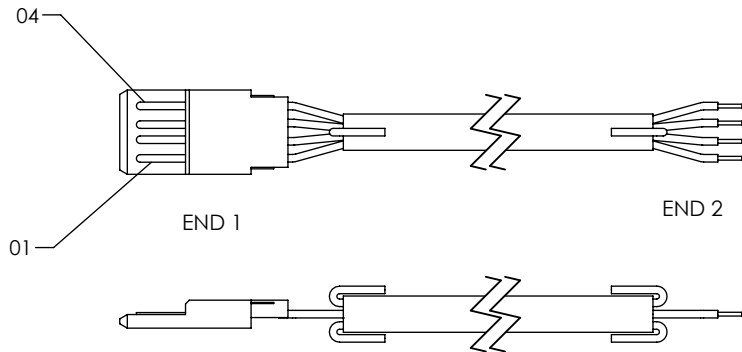
TABLE 2	
END OPTION	"A"
AMS	LENGTH IN MILLIMETERS
AM	LENGTH IN MILLIMETERS
BC	(LENGTH IN MILLIMETERS X 2) + 50.0[2.00]
BM	LENGTH IN MILLIMETERS
BMS	LENGTH IN MILLIMETERS



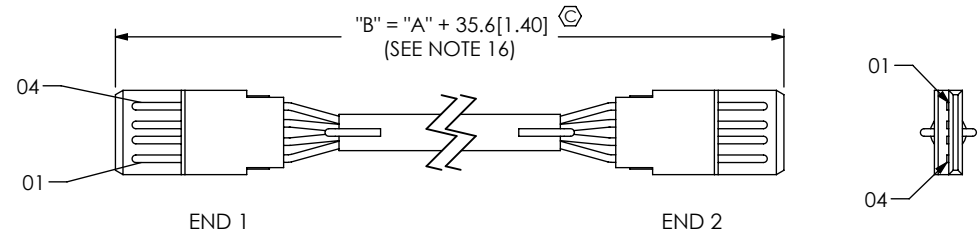
**IN-PROCESS 2**  
FOLD SHIELD BACK, REMOVE FOIL & TWIST SHIELD



**IN-PROCESS 3**  
STRIP INDIVIDUAL WIRES AND DIP IN TIN



**-AMS-XXX: IN-PROCESS 4**  
TERMINATE TO SUB-USB-A-G-B-01  
(SEE NOTE 18 & 25)



**-AMS-XXX: IN-PROCESS 5**  
TERMINATE SECOND END TO SUB-USB-A-G-B-01  
(SEE NOTE 18 & 25)

TABLE 3		
END 1 POS	WIRE COLOR	END 2 POS
01	RED	01
02	WHITE	02
03	GREEN	03
04	BLACK	04

**PROPRIETARY NOTE**  
THIS DOCUMENT CONTAINS INFORMATION CONFIDENTIAL AND PROPRIETARY TO SAMTEC, INC. AND SHALL NOT BE REPRODUCED OR TRANSFERRED TO OTHER DOCUMENTS OR DISCLOSED TO OTHERS OR USED FOR ANY PURPOSE OTHER THAN THAT WHICH IT WAS OBTAINED WITHOUT THE EXPRESSED WRITTEN CONSENT OF SAMTEC, INC.

DO NOT SCALE DRAWING

SHEET SCALE: 1:1

**samtec**

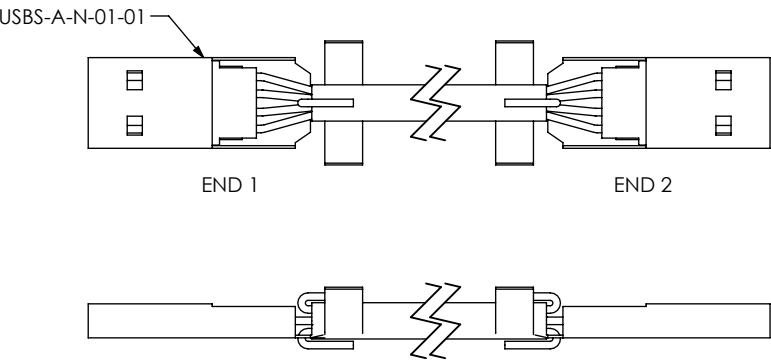
520 PARK EAST BLVD. NEW ALBANY, IN 47150  
PHONE: 812-944-6733 FAX: 812-948-5047  
e-Mail info@SAMTEC.com code 55322

DESCRIPTION:  
RECTANGULAR CABLE USB

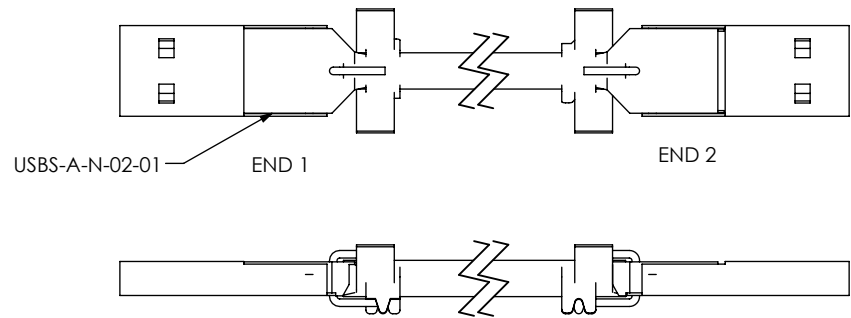
DWG. NO.  
**RCU-X-XX.XX-XXX-XXX**

BY: T NEWTON 02/17/2010 SHEET 4 OF 10

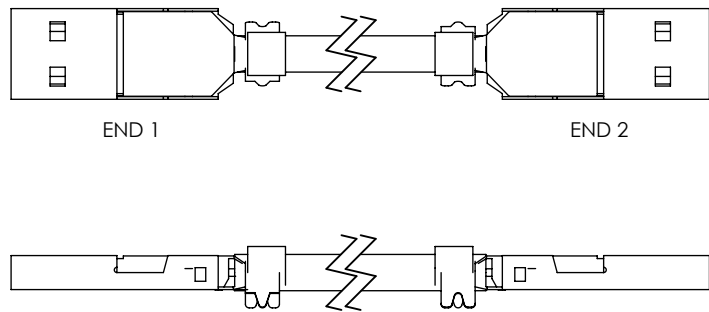
REVISION J



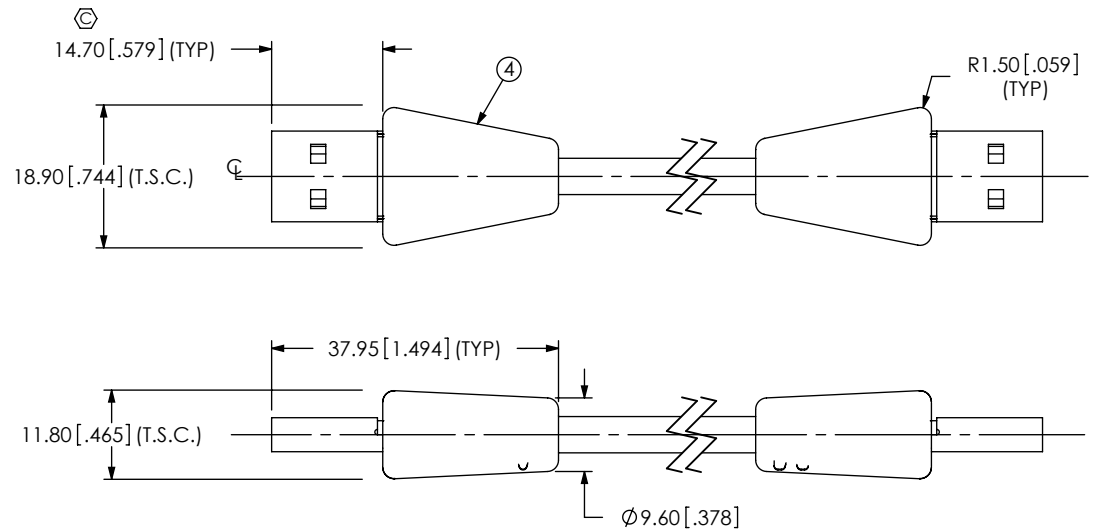
-AMS-XXX: IN-PROCESS 6  
ADD USBS-A-N-01-01 SHELL  
(SEE NOTE 18)



-AMS-XXX: IN-PROCESS 7  
ADD USBS-A-N-02-01 SHELL  
(SEE NOTE 18)



-AMS-XXX: IN-PROCESS 8  
CRIMP SHELLS OVER BRAID AND TRIM EXCESS SHIELD



-AMS-AMS: IN-PROCESS 9  
PREMOLD

F:\DWG\MISC\MKTG\RCU-X-XX.XX-XXX-XXX-MKT.SLDDRW

PROPRIETARY NOTE

THIS DOCUMENT CONTAINS INFORMATION CONFIDENTIAL AND PROPRIETARY TO SAMTEC, INC. AND SHALL NOT BE REPRODUCED OR TRANSFERRED TO OTHER DOCUMENTS OR DISCLOSED TO OTHERS OR USED FOR ANY PURPOSE OTHER THAN THAT WHICH IT WAS OBTAINED WITHOUT THE EXPRESSED WRITTEN CONSENT OF SAMTEC, INC.

DO NOT SCALE DRAWING

SHEET SCALE: 1:1

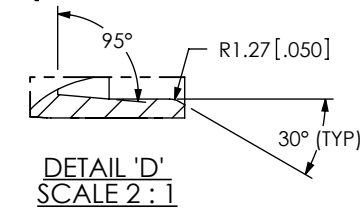
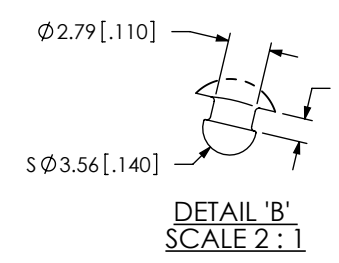
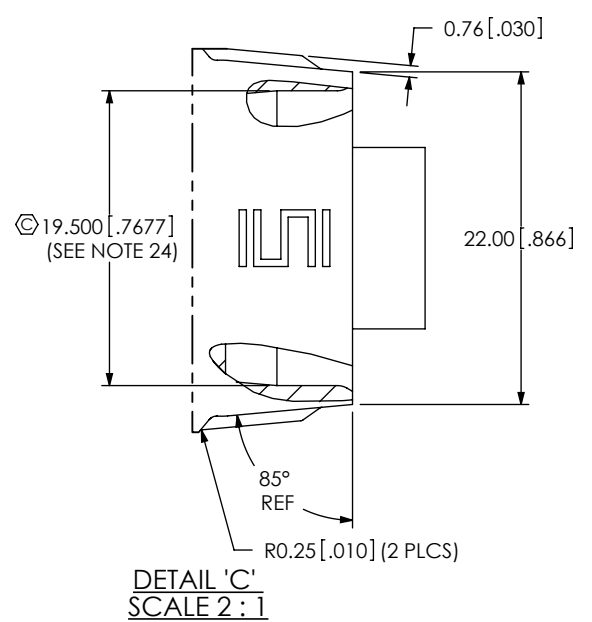
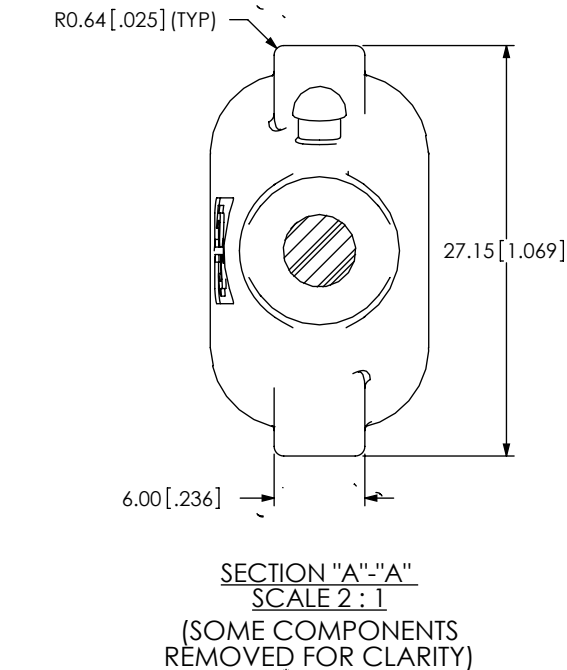
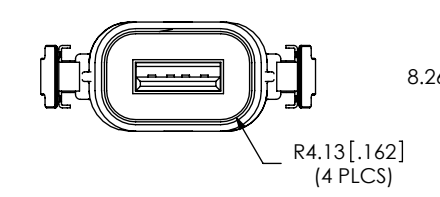
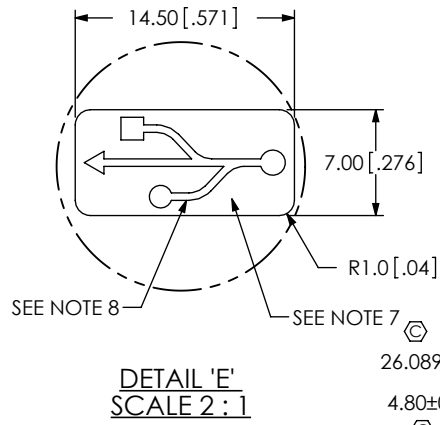
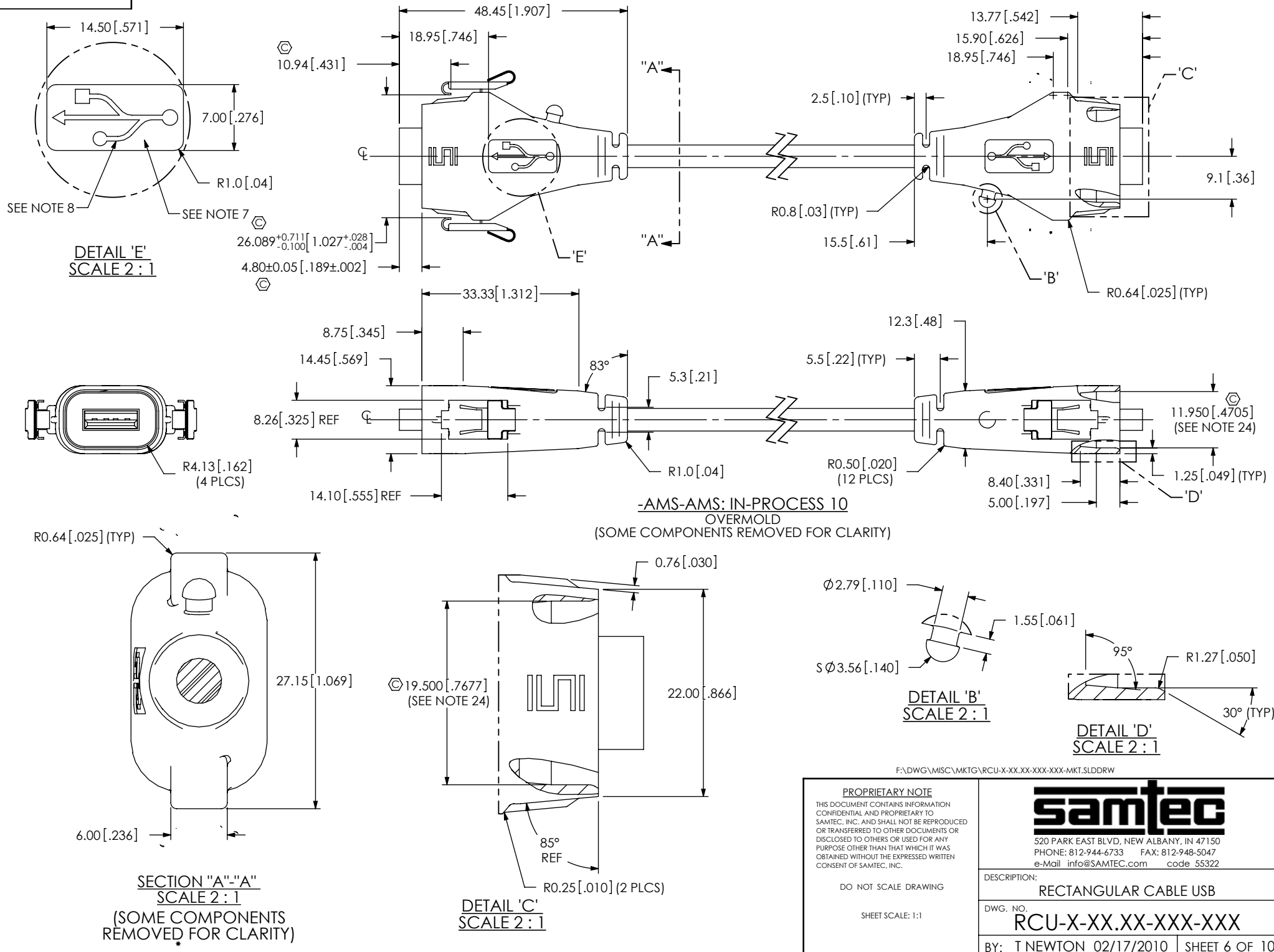
**samtec**

520 PARK EAST BLVD, NEW ALBANY, IN 47150  
PHONE: 812-944-6733 FAX: 812-948-5047  
e-Mail info@SAMTEC.com code 55322

DESCRIPTION:  
RECTANGULAR CABLE USB

DWG. NO.  
**RCU-X-XX.XX-XXX-XXX**

BY: T NEWTON 02/17/2010 SHEET 5 OF 10



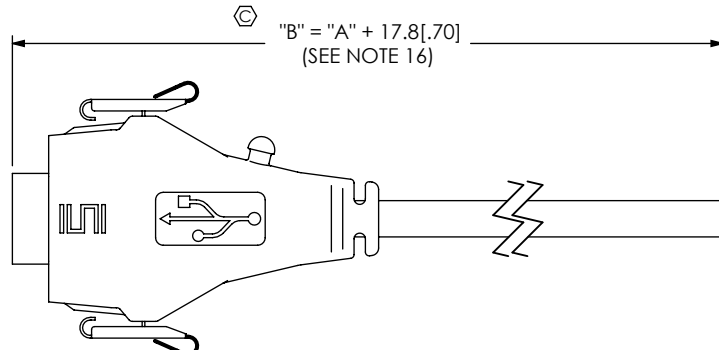
F:\DWG\MISC\MKTG\RUCU-X-XX-XX-XXX-MKT.SLDDRW

**PROPRIETARY NOTE**  
 THIS DOCUMENT CONTAINS INFORMATION CONFIDENTIAL AND PROPRIETARY TO SAMTEC, INC. AND SHALL NOT BE REPRODUCED OR TRANSFERRED TO OTHER DOCUMENTS OR DISCLOSED TO OTHERS OR USED FOR ANY PURPOSE OTHER THAN THAT WHICH IT WAS OBTAINED WITHOUT THE EXPRESSED WRITTEN CONSENT OF SAMTEC, INC.

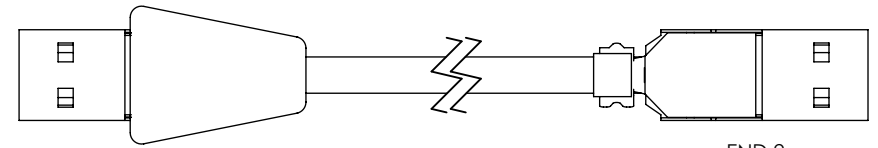
DO NOT SCALE DRAWING

SHEET SCALE: 1:1

<b>samtec</b>	
520 PARK EAST BLVD. NEW ALBANY, IN 47150 PHONE: 812-944-6733 FAX: 812-948-5047 e-Mail: info@SAMTEC.com code 55322	
DESCRIPTION: <b>RECTANGULAR CABLE USB</b>	
DWG. NO. <b>RCU-X-XX-XX-XXX-XXX</b>	
BY: T NEWTON 02/17/2010	SHEET 6 OF 10



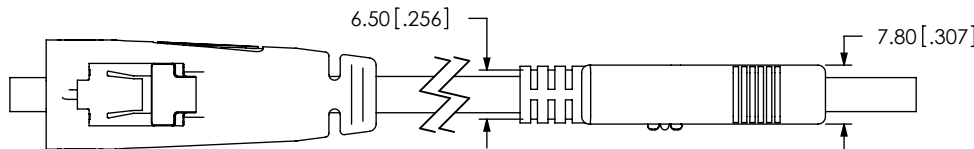
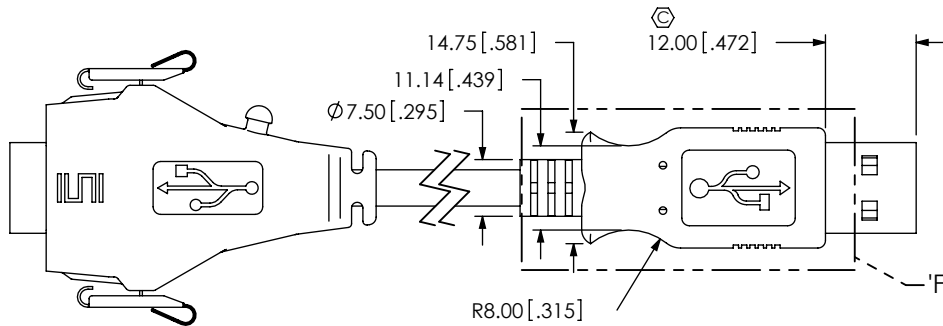
**-AMS-BC: IN-PROCESS 11**  
CUT CABLE IN HALF AND TRIM TO LENGTH



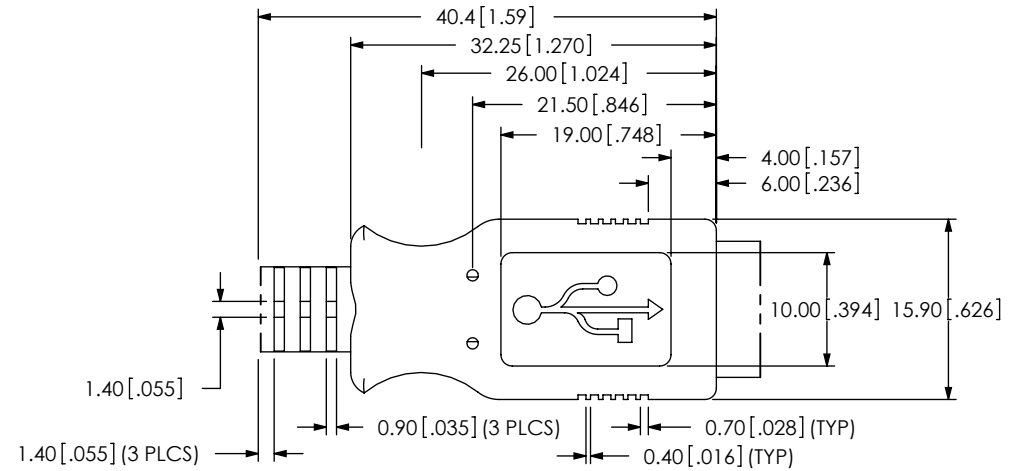
END 1

END 2

**-AMS-AM: IN-PROCESS 9**  
PREMOLD  
(SAME AS -AMS-AMS: IN-PROCESS 9, EXCEPT AS SHOWN)



**-AMS-AM: IN-PROCESS 10**  
OVERMOLD  
(SAME AS -AMS-AMS: IN-PROCESS 10, EXCEPT AS SHOWN)



**DETAIL 'F'**  
SCALE 1.5 : 1  
(SEE NOTE 22)

**PROPRIETARY NOTE**  
THIS DOCUMENT CONTAINS INFORMATION CONFIDENTIAL AND PROPRIETARY TO SAMTEC, INC. AND SHALL NOT BE REPRODUCED OR TRANSFERRED TO OTHER DOCUMENTS OR DISCLOSED TO OTHERS OR USED FOR ANY PURPOSE OTHER THAN THAT WHICH IT WAS OBTAINED WITHOUT THE EXPRESSED WRITTEN CONSENT OF SAMTEC, INC.

DO NOT SCALE DRAWING

SHEET SCALE: 1:1



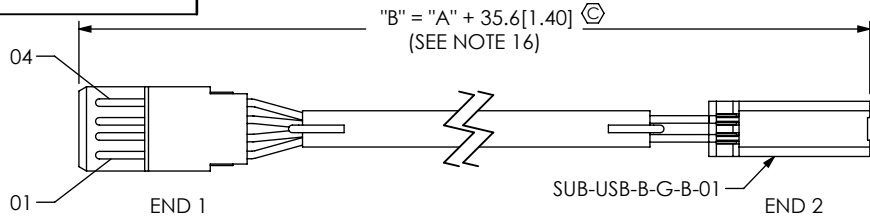
520 PARK EAST BLVD, NEW ALBANY, IN 47150  
PHONE: 812-944-6733 FAX: 812-948-5047  
e-Mail info@SAMTEC.com code 55322

DESCRIPTION:  
RECTANGULAR CABLE USB

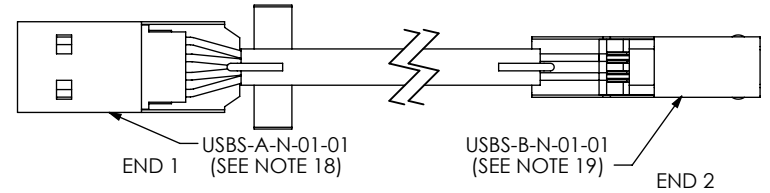
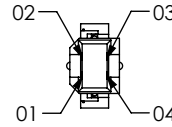
DWG. NO.  
**RCU-X-XX.XX-XXX-XXX**

BY: T NEWTON 02/17/2010 SHEET 7 OF 10

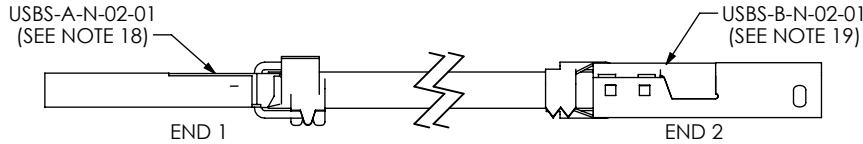
REVISION J



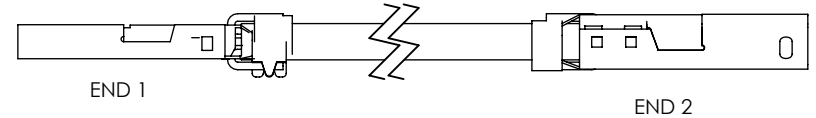
**-AMS-BM: IN-PROCESS 5**  
 TERMINATE SECOND END TO SUB-USB-B-G-B-01  
 (SAME AS -AMS-XXX: IN-PROCESS 5, EXCEPT AS SHOWN)  
 (SEE NOTE 18, 19 & 25)



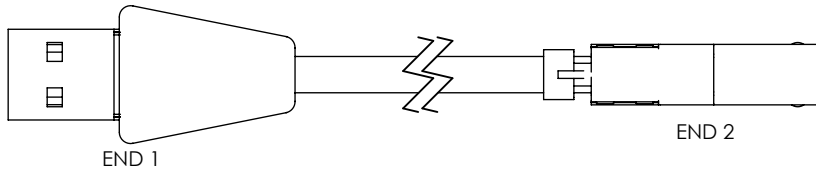
**-AMS-BM: IN-PROCESS 6**  
 ADD USBS-A-N-01-01 & USBS-B-N-01-01 SHELLS  
 (SAME AS -AMS-XXX: IN-PROCESS 6, EXCEPT AS SHOWN)  
 (SEE NOTE 18 & NOTE 19)



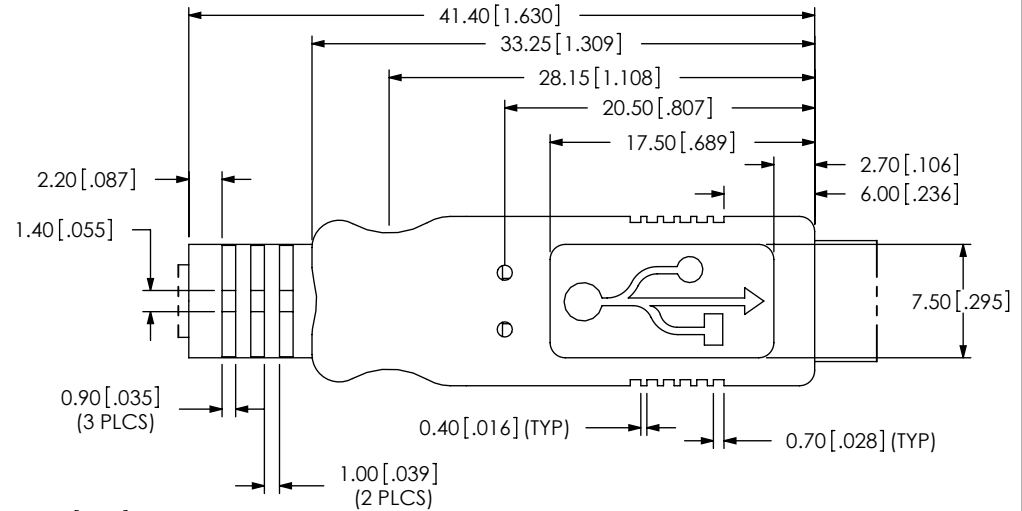
**-AMS-BM: IN-PROCESS 7**  
 ADD USBS-A-N-02-01 & USBS-B-N-02-01 SHELLS  
 (SAME AS -AMS-XXX: IN-PROCESS 7, EXCEPT AS SHOWN)  
 (SEE NOTE 18 & NOTE 19)



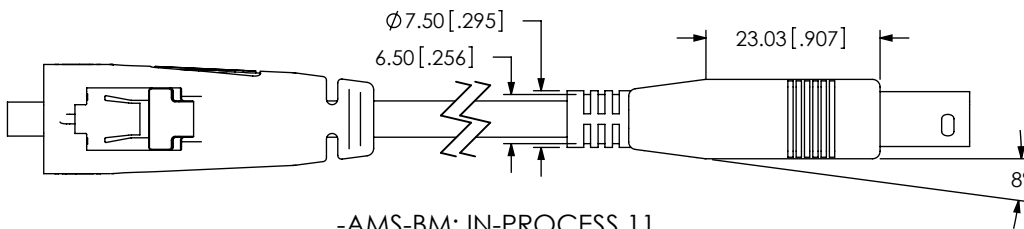
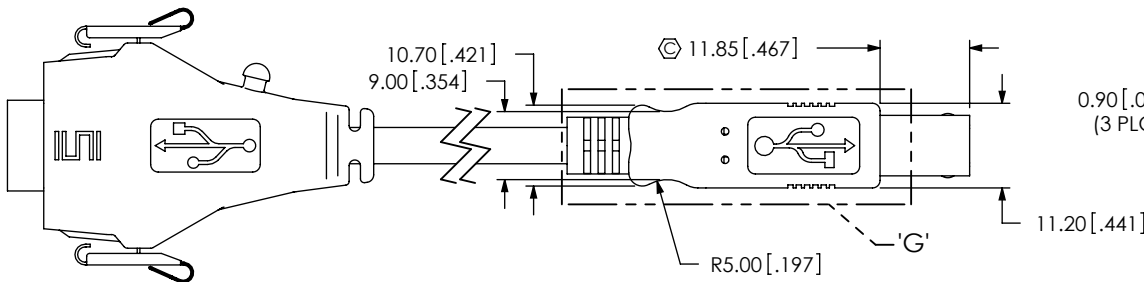
**-AMS-BM: IN-PROCESS 8**  
 CRIMP SHELLS OVER BRAID AND TRIM EXCESS SHIELD  
 (SAME AS -AMS-XXX: IN-PROCESS 8, EXCEPT AS SHOWN)



**-AMS-BM: IN-PROCESS 9**  
 PREMOLD  
 (SAME AS -AMS-AMS: IN-PROCESS 9, EXCEPT AS SHOWN)



**DETAIL 'G'**  
**SCALE 2 : 1**  
 (SEE NOTE 22)



**-AMS-BM: IN-PROCESS 11**  
 OVERMOLD  
 (SAME AS -AMS-AMS: IN-PROCESS 10, EXCEPT AS SHOWN)

**PROPRIETARY NOTE**  
 THIS DOCUMENT CONTAINS INFORMATION  
 CONFIDENTIAL AND PROPRIETARY TO  
 SAMTEC, INC. AND SHALL NOT BE REPRODUCED  
 OR TRANSFERRED TO OTHER DOCUMENTS OR  
 DISCLOSED TO OTHERS OR USED FOR ANY  
 PURPOSE OTHER THAN THAT WHICH IT WAS  
 OBTAINED WITHOUT THE EXPRESSED WRITTEN  
 CONSENT OF SAMTEC, INC.

DO NOT SCALE DRAWING

SHEET SCALE: 1:1



520 PARK EAST BLVD, NEW ALBANY, IN 47150  
 PHONE: 812-944-6733 FAX: 812-948-5047  
 e-Mail info@SAMTEC.com code 55322

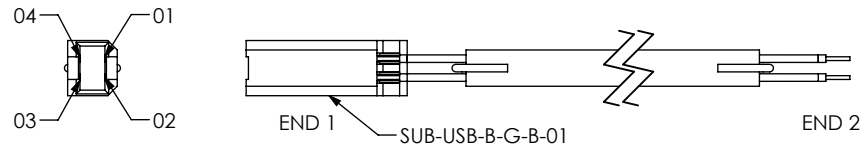
DESCRIPTION:  
 RECTANGULAR CABLE USB

DWG. NO.  
**RCU-X-XX.XX-XXX-XXX**

BY: T NEWTON 02/17/2010 SHEET 8 OF 10

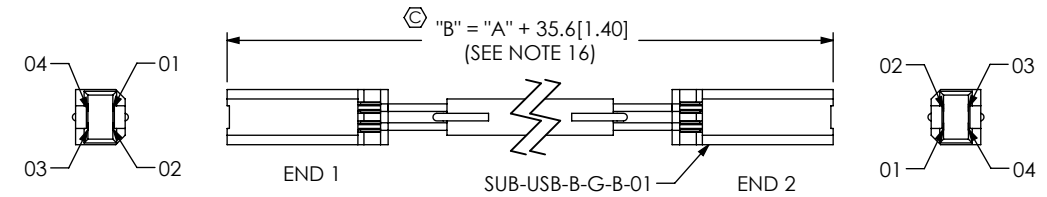


REVISION J



END 1 SUB-USB-B-G-B-01 END 2

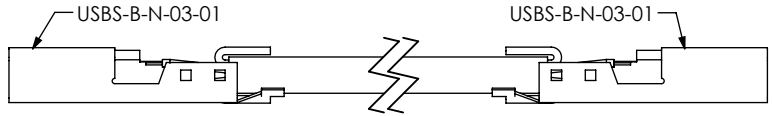
**-BMS-XXX: IN-PROCESS 4**  
 TERMINATE TO SUB-USB-B-G-B-01  
 (SAME -AMS-XXX: IN-PROCESS 4, EXCEPT AS SHOWN)  
 (SEE NOTE 23 & 25)



END 1 SUB-USB-B-G-B-01 END 2

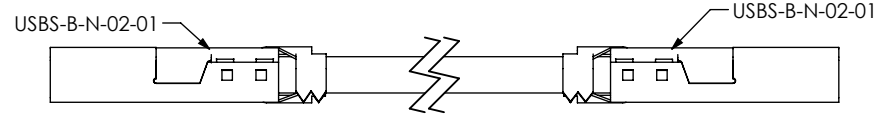
$"B" = "A" + 35.6 [1.40]$   
 (SEE NOTE 16)

**-BMS-BC: IN-PROCESS 5**  
 TERMINATE TO SUB-USB-B-G-B-01  
 (SAME AS -AMS-AMS: IN-PROCESS 5, EXCEPT AS SHOWN)  
 (SEE NOTE 23 & 25)



USBS-B-N-03-01 USBS-B-N-03-01

**-BMS-BC: IN-PROCESS 6**  
 ADD USBS-B-N-03-01  
 (SAME AS -AMS-AMS: IN-PROCESS 6, EXCEPT AS SHOWN)  
 (SEE NOTE 23)

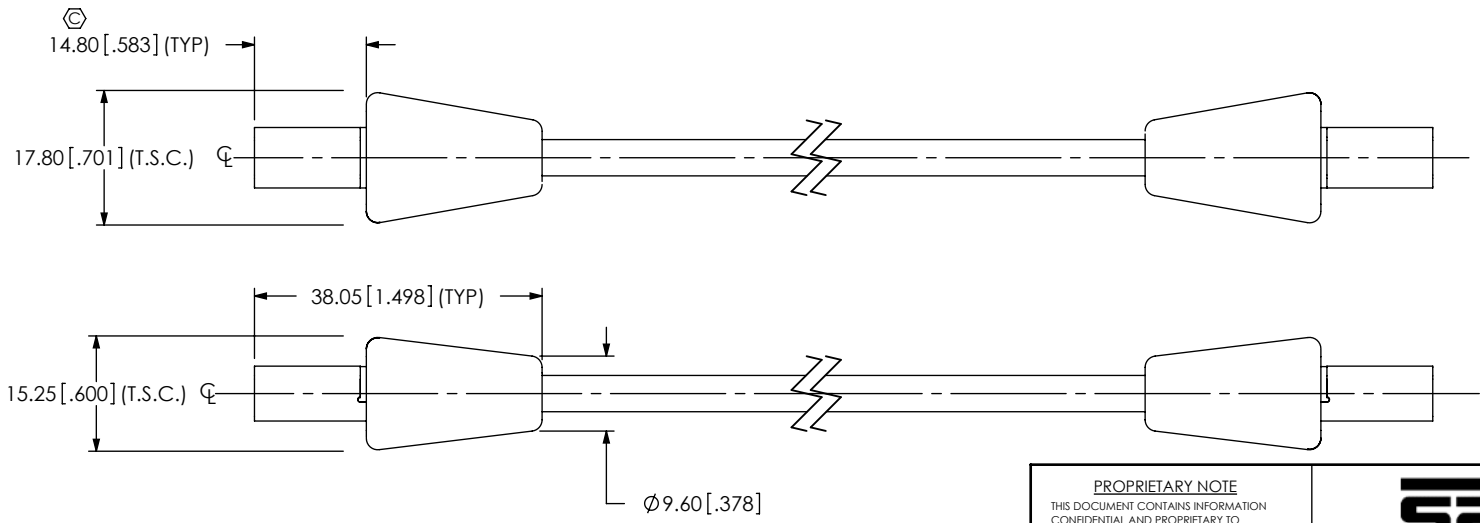


USBS-B-N-02-01 USBS-B-N-02-01

**-BMS-BC: IN-PROCESS 7**  
 ADD USBS-B-N-02-02  
 (SAME AS -AMS-AMS: IN-PROCESS 7, EXCEPT AS SHOWN)  
 (SEE NOTE 23)



**-BMS-BC: IN-PROCESS 8**  
 CRIMP SHELLS OVER BRAID AND TRIM SHIELD  
 (SAME AS -AMS-AMS: IN-PROCESS 8, EXCEPT AS SHOWN)



**-BMS-BC: IN-PROCESS 9**  
 PREMOLD  
 (SAME AS -AMS-AMS: IN-PROCESS 9, EXCEPT AS SHOWN)

**PROPRIETARY NOTE**  
 THIS DOCUMENT CONTAINS INFORMATION  
 CONFIDENTIAL AND PROPRIETARY TO  
 SAMTEC, INC. AND SHALL NOT BE REPRODUCED  
 OR TRANSFERRED TO OTHER DOCUMENTS OR  
 DISCLOSED TO OTHERS OR USED FOR ANY  
 PURPOSE OTHER THAN THAT WHICH IT WAS  
 OBTAINED WITHOUT THE EXPRESSED WRITTEN  
 CONSENT OF SAMTEC, INC.

DO NOT SCALE DRAWING  
 SHEET SCALE: 1:1

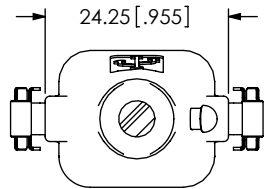
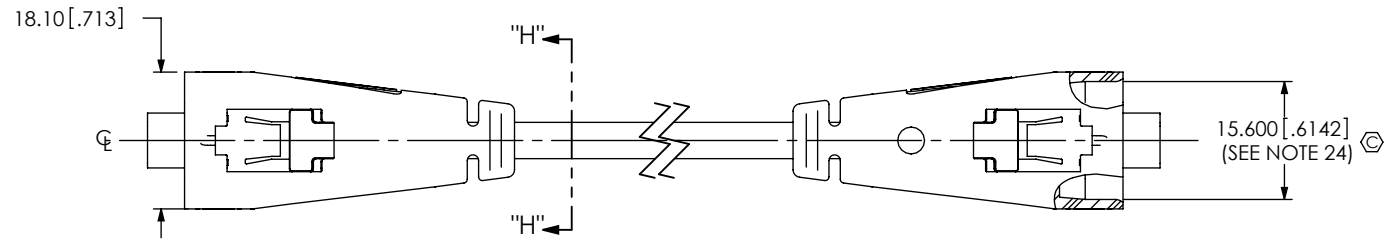
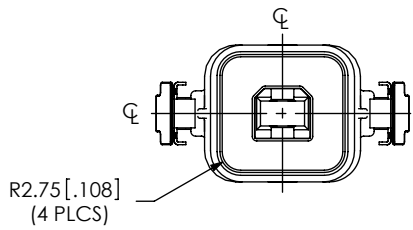
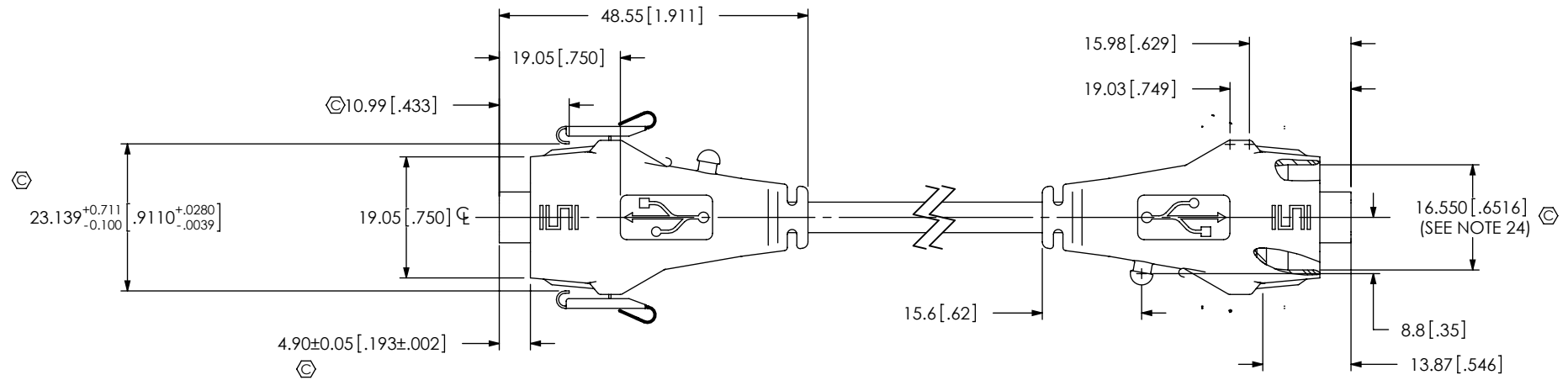


520 PARK EAST BLVD, NEW ALBANY, IN 47150  
 PHONE: 812-944-6733 FAX: 812-948-5047  
 e-Mail: info@SAMTEC.com code 55322

DESCRIPTION:  
 RECTANGULAR CABLE USB

DWG. NO.  
**RCU-X-XX.XX-XXX-XXX**

BY: T NEWTON 02/17/2010 SHEET9 OF10



SECTION "H"-"H"

-BMS-BC: IN-PROCESS 10  
OVERMOLD  
(SAME AS -AMS-AMS: IN-PROCESS 10, EXCEPT AS SHOWN)

**PROPRIETARY NOTE**  
THIS DOCUMENT CONTAINS INFORMATION CONFIDENTIAL AND PROPRIETARY TO SAMTEC, INC. AND SHALL NOT BE REPRODUCED OR TRANSFERRED TO OTHER DOCUMENTS OR DISCLOSED TO OTHERS OR USED FOR ANY PURPOSE OTHER THAN THAT WHICH IT WAS OBTAINED WITHOUT THE EXPRESSED WRITTEN CONSENT OF SAMTEC, INC.

DO NOT SCALE DRAWING

SHEET SCALE: 1:1



520 PARK EAST BLVD, NEW ALBANY, IN 47150  
PHONE: 812-944-6733 FAX: 812-948-5047  
e-Mail info@SAMTEC.com code 55322

DESCRIPTION:  
RECTANGULAR CABLE USB

DWG. NO.  
RCU-X-XX.XX-XXX-XXX

BY: T NEWTON 02/17/2010 SHEET 10 OF 10