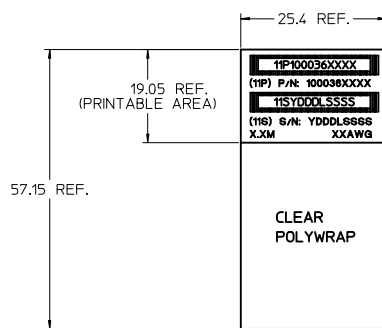


**LABEL TEXT DEFINITION**



P/N: SEE P/N TABLE  
 S/N YDDDLSSSS:  
 Y = YEAR, LAST DIGIT OF YEAR  
 DDD = DAY OF THE YEAR  
 L = LOCATION - 1 = USA  
 2 = MEXICO  
 3 = CHINA  
 SSSS = SERIAL NUMBER  
 X.XM: CABLE LENGTH, SEE P/N TABLE  
 XXAWG: WIRE GAUGE, SEE P/N TABLE

P/N	LENGTH	TOLERANCE	GAUGE	JACKET RATING
1000360800	0.5M	0.03M	30	CL2
1000360801	1.0M	0.05M	30	CL2
1000360802	2.0M	0.05M	28	CL2
1000360803	3.0M	0.05M	28	CL2
1000360804	4.0M	0.10M	28	CL2
1000360805	5.0M	0.10M	26	CL2
1000360806	6.0M	0.13M	26	CL2
1000360807	7.0M	0.13M	24	CL2

- NOTES:
- MATERIAL  
 BACKSHELLS: NICKEL PLATED ZINC  
 PULL: NYLON 6/6, GREEN, UL94 HB  
 LATCH: STAINLESS STEEL  
 CABLE JACKET RATING: SEE P/N TABLE
  - LENGTH AND TOLERANCE: SEE P/N TABLE
  - ELECTRICAL PERFORMANCE PER PCI EXPRESS  
 EXTERNAL CABLING SPEC. REV 2.0.
  - RoHS COMPLIANT, WITHOUT EXEMPTIONS.

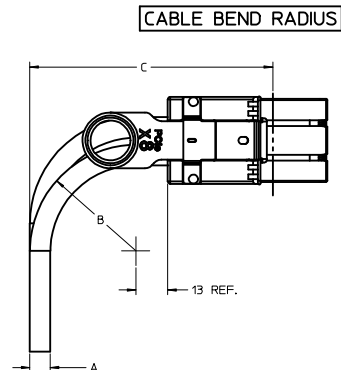
SEE REVISION TABLE IEC NO: CPG2014-289 DRAWN BY: DRWN:KWEBER CHECKED BY: CHYOSRATKOVIC APPROVED BY: APPR:CHRISCHY	QUALITY SYMBOLS ∇=0 ∇=0 ∇=0	GENERAL TOLERANCES (UNLESS SPECIFIED) mm INCH	DIMENSION STYLE MM ONLY	SCALE 1:1	DESIGN UNITS METRIC	THIRD ANGLE PROJECTION	
		ANGULAR ±---° DRAFT WHERE APPLICABLE MUST REMAIN WITHIN DIMENSIONS	DRAWN BY: DATE KWEBER 2013/02/28	CHECKED BY: DATE RKLIN 2013/03/05	APPROVED BY: DATE KJANOTA 2013/08/06	TITLE X8 PCIe CABLE ASSEMBLY GEN 2	MATERIAL NO. SEE P/N TABLE

**molex**

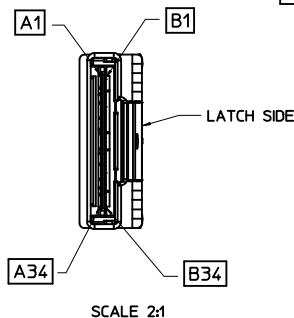
THIS DRAWING CONTAINS INFORMATION THAT IS PROPRIETARY TO MOLEX INCORPORATED AND SHOULD NOT BE USED WITHOUT WRITTEN PERMISSION

WIRING DIAGRAM

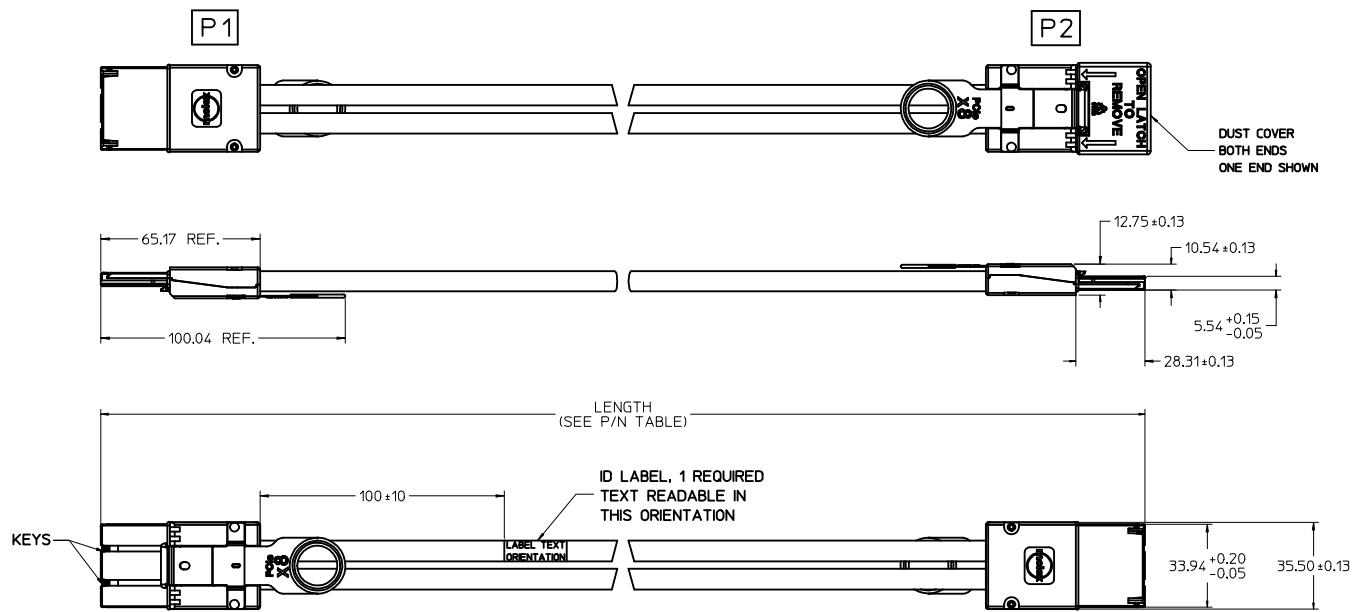
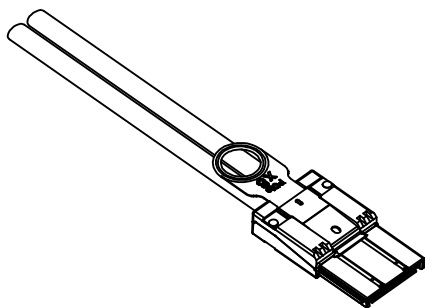
P1 END			P2 END			P1 END			P2 END		
SIGNAL	PAD		PAD	SIGNAL		SIGNAL	PAD		PAD	SIGNAL	
GND	A1	→	B1	GND	←	GND	B1	→	A1	GND	
PETp0	A2	→	B2	PERp0	←	PERp0	B2	→	A2	PETp0	
PETn0	A3	→	B3	PERn0	←	PERn0	B3	→	A3	PETn0	
GND	A4	→	B4	GND	←	GND	B4	→	A4	GND	
PETp1	A5	→	B5	PERp1	←	PERp1	B5	→	A5	PETp1	
PETn1	A6	→	B6	PERn1	←	PERn1	B6	→	A6	PETn1	
GND	A7	→	B7	GND	←	GND	B7	→	A7	GND	
PETp2	A8	→	B8	PERp2	←	PERp2	B8	→	A8	PETp2	
PETn2	A9	→	B9	PERn2	←	PERn2	B9	→	A9	PETn2	
GND	A10	→	B10	GND	←	GND	B10	→	A10	GND	
PETp3	A11	→	B11	PERp3	←	PERp3	B11	→	A11	PETp3	
PETn3	A12	→	B12	PERn3	←	PERn3	B12	→	A12	PETn3	
GND	A13	→	B13	GND	←	GND	B13	→	A13	GND	
CREFCLK+	A14	→	A14	CREFCLK+	←	NC	B14	→	B14	NC	
CREFCLK-	A15	→	A15	CREFCLK-	←	NC	B15	→	B15	NC	
GND	A16	→	A16	GND	←	NC	B16	→	B16	NC	
NC	A17	→	A17	NC	←	NC	B17	→	B17	NC	
NC	A18	→	A18	NC	←	NC	B18	→	B18	NC	
SB_RTN	A19	→	A19	SB_RTN	←	NC	B19	→	B19	NC	
CPRSNT#	A20	→	A20	CPRSNT#	←	CWAKE#	B20	→	B20	CWAKE#	
CPWRON	A21	→	A21	CPWRON	←	CPERST#	B21	→	B21	CPERST#	
GND	A22	→	B22	GND	←	GND	B22	→	A22	GND	
PETp4	A23	→	B23	PERp4	←	PERp4	B23	→	A23	PETp4	
PETn4	A24	→	B24	PERn4	←	PERn4	B24	→	A24	PETn4	
GND	A25	→	B25	GND	←	GND	B25	→	A25	GND	
PETp5	A26	→	B26	PERp5	←	PERp5	B26	→	A26	PETp5	
PETn5	A27	→	B27	PERn5	←	PERn5	B27	→	A27	PETn5	
GND	A28	→	B28	GND	←	GND	B28	→	A28	GND	
PETp6	A29	→	B29	PERp6	←	PERp6	B29	→	A29	PETp6	
PETn6	A30	→	B30	PERn6	←	PERn6	B30	→	A30	PETn6	
GND	A31	→	B31	GND	←	GND	B31	→	A31	GND	
PETp7	A32	→	B32	PERp7	←	PERp7	B32	→	A32	PETp7	
PETn7	A33	→	B33	PERn7	←	PERn7	B33	→	A33	PETn7	
GND	A34	→	B34	GND	←	GND	B34	→	A34	GND	



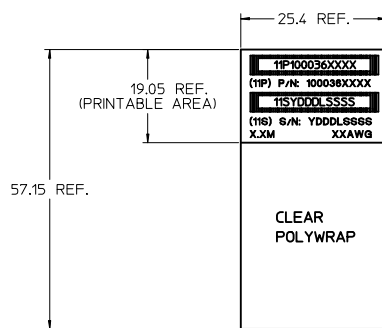
CABLE GAGE		24	26	28
A	CABLE DIAMETER (REF.)	10.40	9.30	8.40
B	MINIMUM OUTER RADIUS	47	42	38
C	MIN. FACEPLATE TO OUTER RADIUS	102	97	93



<b>SEE REVISION TABLE</b> IEC NO: CPG2014-2489 DRAWN BY: KWEBER CHECKED BY: RKL APPROVED BY: KJANOTA DATE: 2013/02/28 DATE: 2013/03/05 DATE: 2013/08/06	QUALITY SYMBOLS	GENERAL TOLERANCES (UNLESS SPECIFIED)	DIMENSION STYLE	SCALE	DESIGN UNITS	THIRD ANGLE PROJECTION
	▽=0	mm INCH	MM ONLY	1:1	METRIC	☉
	▽=0	4 PLACES ± --- ± ---				
	▽=0	3 PLACES ± --- ± ---				
		ANGULAR ± --- °				
		DRAFT WHERE APPLICABLE MUST REMAIN WITHIN DIMENSIONS	SEE P/N TABLE			
			DRAWN BY: KWEBER DATE: 2013/02/28 CHECKED BY: RKL DATE: 2013/03/05 APPROVED BY: KJANOTA DATE: 2013/08/06		TITLE: X8 PCIe CABLE ASSEMBLY GEN 2	
			MATERIAL NO: SD-100036-0800		DOCUMENT NO: SD-100036-0800 SHEET NO: 2 OF 2	
			THIS DRAWING CONTAINS INFORMATION THAT IS PROPRIETARY TO MOLEX INCORPORATED AND SHOULD NOT BE USED WITHOUT WRITTEN PERMISSION			



**LABEL TEXT DEFINITION**



P/N: SEE P/N TABLE  
 S/N YDDDLSSSS:  
 Y = YEAR, LAST DIGIT OF YEAR  
 DDD = DAY OF THE YEAR  
 L = LOCATION - 1 = USA  
 2 = MEXICO  
 3 = CHINA  
 SSSS = SERIAL NUMBER  
 X.XM: CABLE LENGTH, SEE P/N TABLE  
 XXAWG: WIRE GAUGE, SEE P/N TABLE

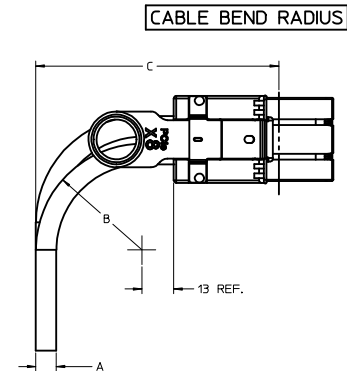
P/N	LENGTH	TOLERANCE	GAUGE	JACKET RATING
1000360800	0.5M	0.03M	30	CL2
1000360801	1.0M	0.05M	30	CL2
1000360802	2.0M	0.05M	28	CL2
1000360803	3.0M	0.05M	28	CL2
1000360804	4.0M	0.10M	28	CL2
1000360805	5.0M	0.10M	26	CL2
1000360806	6.0M	0.13M	26	CL2
1000360807	7.0M	0.13M	24	CL2

- NOTES:
- MATERIAL  
 BACKSHELLS: NICKEL PLATED ZINC  
 PULL: NYLON 6/6, GREEN, UL94 HB  
 LATCH: STAINLESS STEEL  
 CABLE JACKET RATING: SEE P/N TABLE
  - LENGTH AND TOLERANCE: SEE P/N TABLE
  - ELECTRICAL PERFORMANCE PER PCI EXPRESS  
 EXTERNAL CABLING SPEC. REV 2.0.
  - RoHS COMPLIANT, WITHOUT EXEMPTIONS.

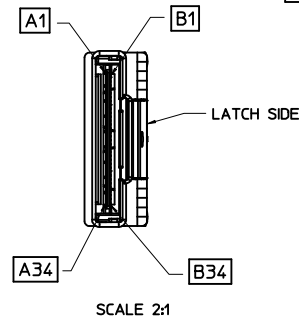
<b>SEE REVISION TABLE</b> IEC NO: CPG2014-289 DRAWN BY: DRWN:KWEBER 2013/12/09 CHECKED BY: CHYKSRATKOVIC 2014/02/03 APPROVED BY: APPR:CHRISCHY 2014/02/06	<b>QUALITY SYMBOLS</b> ∇=0 ∇=0 ∇=0	<b>GENERAL TOLERANCES (UNLESS SPECIFIED)</b> <table border="1"> <tr> <th></th> <th>mm</th> <th>INCH</th> </tr> <tr> <td>4 PLACES</td> <td>±---</td> <td>±---</td> </tr> <tr> <td>3 PLACES</td> <td>±---</td> <td>±---</td> </tr> <tr> <td>2 PLACES</td> <td>±---</td> <td>±---</td> </tr> <tr> <td>1 PLACE</td> <td>±---</td> <td>±---</td> </tr> <tr> <td>0 PLACE</td> <td>±</td> <td>±</td> </tr> </table>		mm	INCH	4 PLACES	±---	±---	3 PLACES	±---	±---	2 PLACES	±---	±---	1 PLACE	±---	±---	0 PLACE	±	±	DIMENSION STYLE <b>MM ONLY</b>	SCALE <b>1:1</b>	DESIGN UNITS <b>METRIC</b>	THIRD ANGLE PROJECTION
				mm	INCH																			
4 PLACES	±---	±---																						
3 PLACES	±---	±---																						
2 PLACES	±---	±---																						
1 PLACE	±---	±---																						
0 PLACE	±	±																						
MATERIAL NO. <b>SEE P/N TABLE</b>	DATE 2013/02/28 2013/03/05 2013/08/06	TITLE <b>X8 PCIe CABLE ASSEMBLY GEN 2</b>	DOCUMENT NO. <b>SD-100036-0800</b>	SHEET NO. <b>1 OF 2</b>																				

THIS DRAWING CONTAINS INFORMATION THAT IS PROPRIETARY TO MOLEX INCORPORATED AND SHOULD NOT BE USED WITHOUT WRITTEN PERMISSION

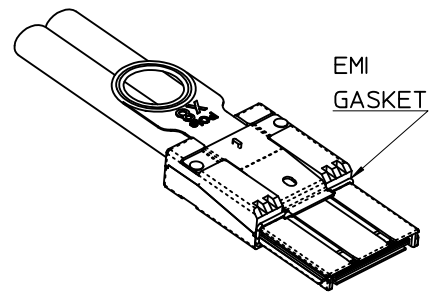
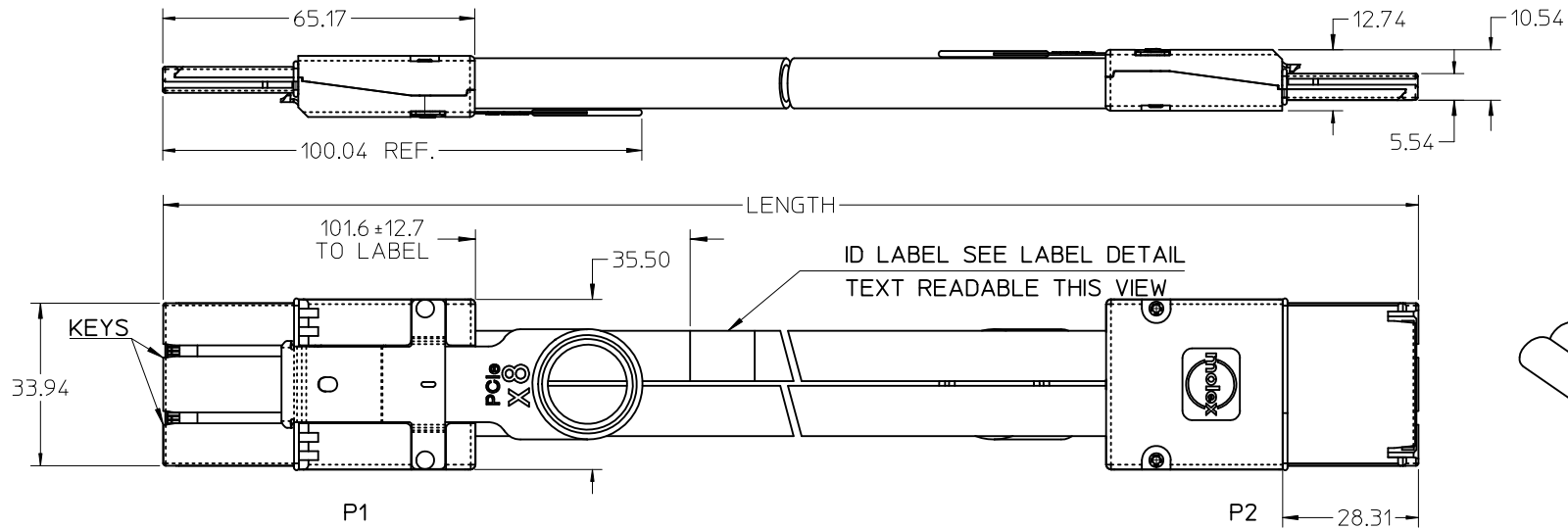
WIRING DIAGRAM									
P1 END					P2 END				
SIGNAL	PAD		PAD	SIGNAL	SIGNAL	PAD		PAD	SIGNAL
GND	A1	---	B1	GND	GND	B1	---	A1	GND
PETp0	A2	→	B2	PERp0	PERp0	B2	←	A2	PETp0
PETn0	A3	→	B3	PERn0	PERn0	B3	←	A3	PETn0
GND	A4	---	B4	GND	GND	B4	---	A4	GND
PETp1	A5	→	B5	PERp1	PERp1	B5	←	A5	PETp1
PETn1	A6	→	B6	PERn1	PERn1	B6	←	A6	PETn1
GND	A7	---	B7	GND	GND	B7	---	A7	GND
PETp2	A8	→	B8	PERp2	PERp2	B8	←	A8	PETp2
PETn2	A9	→	B9	PERn2	PERn2	B9	←	A9	PETn2
GND	A10	---	B10	GND	GND	B10	---	A10	GND
PETp3	A11	→	B11	PERp3	PERp3	B11	←	A11	PETp3
PETn3	A12	→	B12	PERn3	PERn3	B12	←	A12	PETn3
GND	A13	---	B13	GND	GND	B13	---	A13	GND
CREFCLK+	A14	---	A14	CREFCLK+	NC	B14	---	B14	NC
CREFCLK-	A15	---	A15	CREFCLK-	NC	B15	---	B15	NC
GND	A16	---	A16	GND	NC	B16	---	B16	NC
NC	A17	---	A17	NC	NC	B17	---	B17	NC
NC	A18	---	A18	NC	NC	B18	---	B18	NC
SB_RTN	A19	---	A19	SB_RTN	NC	B19	---	B19	NC
CPRSNT#	A20	---	A20	CPRSNT#	CWAKE#	B20	---	B20	CWAKE#
CPWRON	A21	---	A21	CPWRON	CPERST#	B21	---	B21	CPERST#
GND	A22	---	B22	GND	GND	B22	---	A22	GND
PETp4	A23	→	B23	PERp4	PERp4	B23	←	A23	PETp4
PETn4	A24	→	B24	PERn4	PERn4	B24	←	A24	PETn4
GND	A25	---	B25	GND	GND	B25	---	A25	GND
PETp5	A26	→	B26	PERp5	PERp5	B26	←	A26	PETp5
PETn5	A27	→	B27	PERn5	PERn5	B27	←	A27	PETn5
GND	A28	---	B28	GND	GND	B28	---	A28	GND
PETp6	A29	→	B29	PERp6	PERp6	B29	←	A29	PETp6
PETn6	A30	→	B30	PERn6	PERn6	B30	←	A30	PETn6
GND	A31	---	B31	GND	GND	B31	---	A31	GND
PETp7	A32	→	B32	PERp7	PERp7	B32	←	A32	PETp7
PETn7	A33	→	B33	PERn7	PERn7	B33	←	A33	PETn7
GND	A34	---	B34	GND	GND	B34	---	A34	GND



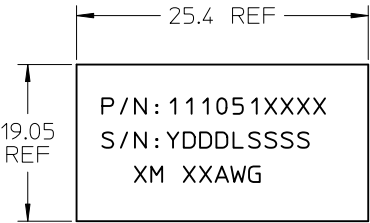
CABLE GAGE		24	26	28
A	CABLE DIAMETER (REF.)	10.40	9.30	8.40
B	MINIMUM OUTER RADIUS	47	42	38
C	MIN. FACEPLATE TO OUTER RADIUS	102	97	93



SEE REVISION TABLE EC NO: CPG2014-2489 DRAWN BY: KWEBER CHKD: SRATKOVIC APPR: CHRISCHY	QUALITY SYMBOLS ▽=0 ▽=0 ▽=0	GENERAL TOLERANCES (UNLESS SPECIFIED)		DIMENSION STYLE MM ONLY		SCALE 1:1	DESIGN UNITS METRIC	THIRD ANGLE PROJECTION
		mm	INCH	DATE	DATE	TITLE		
		4 PLACES	± ---	± ---	DATE			
		3 PLACES	± ---	± ---	DATE			
		2 PLACES	± ---	± ---	DATE			
		1 PLACE	± ---	± ---	DATE			
		0 PLACE	±	±	DATE			
		ANGULAR ± ---°		DATE				
		DRAFT WHERE APPLICABLE MUST REMAIN WITHIN DIMENSIONS		DATE				
		SEE P/N TABLE		DATE				
		MATERIAL NO.		DATE				
		DOCUMENT NO.		DATE				
		SD-100036-0800		DATE				
		SHEET NO.		DATE				
		2 OF 2		DATE				



ID LABEL  
1 REQUIRED



YDDLSSSS  
Y-- YEAR, THE LAST DIGIT OF YEAR  
DDD---DAY OF THE YEAR  
L---LOCATION (1 = HPC, 2 = GUAD, 3 = DG)  
SSSS---SERIAL NO.

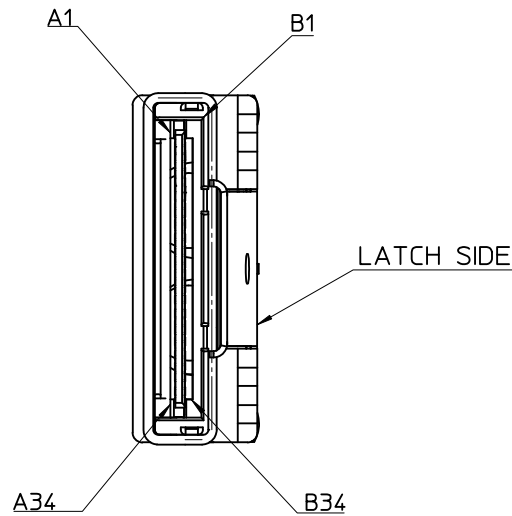
P/N	LENGTH	TOLERANCE	GAUGE	JACKET RATING
1110510800	0.5M	0.03M	28	CL2
1110510801	1M	0.05M	28	CL2
1110510802	2M	0.05M	28	CL2
1110510803	3M	0.05M	28	CL2
1110510804	4M	0.10M	28	CL2
1110510805	5M	0.10M	26	CL2
1110510806	6M	0.13M	26	CL2
1110510807	7M	0.13M	24	CL2

- NOTES:
- MATERIAL= BACKSHELLS - ZINC DIECAST  
PULL - NYLON  
CABLE JACKET RATING - SEE TABLE.
  - LENGTH AND TOLERANCE - SEE TABLE
  - ELECTRICAL PERFORMANCE PER PCI EXPRESS EXTERNAL CABLING SPEC.REV 2.0 DRAFT 0.5
  - PLUG MATES TO RECEPTACLE 75586-0002, AND EMI GUIDE HOUSING ASSY. 74540-0100
  - LEAD FREE, NO RoHS EXEMPTIONS

IPASS™ IS A TRADEMARK OF MOLEX

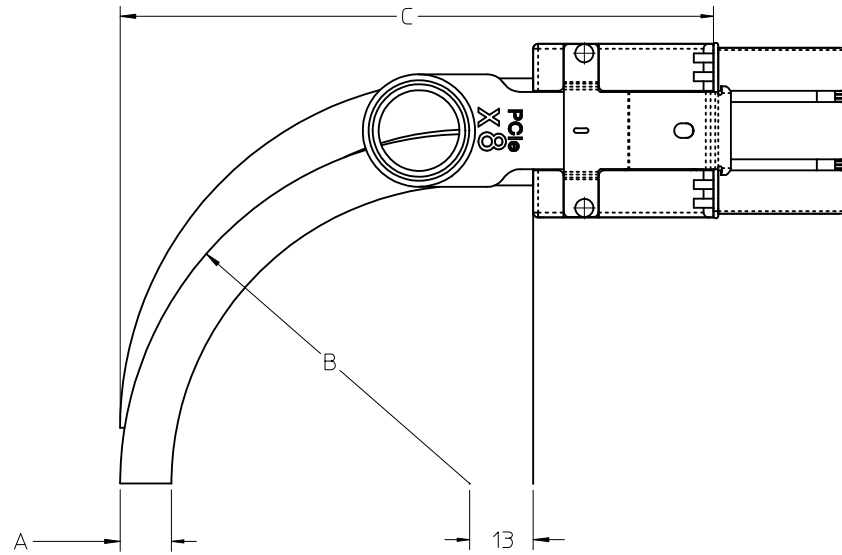
INITIAL RELEASE EC NO: USY2012-0262 DRWN:TPRATT 2011/08/05 CHKD:KWEBER 2011/09/01 APPR:RMKHAN 2011/09/21	QUALITY SYMBOLS ▽=0 ▽=0	GENERAL TOLERANCES (UNLESS SPECIFIED)	DIMENSION STYLE MM ONLY	SCALE 1:1	DESIGN UNITS METRIC	THIRD ANGLE PROJECTION													
		<table border="1"> <thead> <tr> <th></th> <th>mm</th> <th>INCH</th> </tr> </thead> <tbody> <tr> <td>4 PLACES</td> <td>± ---</td> <td>± ---</td> </tr> <tr> <td>3 PLACES</td> <td>± ---</td> <td>± ---</td> </tr> <tr> <td>2 PLACES</td> <td>± 0.13</td> <td>± ---</td> </tr> <tr> <td>1 PLACE</td> <td>± 0.25</td> <td>± ---</td> </tr> </tbody> </table>		mm	INCH	4 PLACES	± ---	± ---	3 PLACES	± ---	± ---	2 PLACES	± 0.13	± ---	1 PLACE	± 0.25	± ---	DRAWN BY DATE TPRATT 2011/08/05	TITLE I-PASS X8 CABLE ASSEMBLY GEN 2
			mm	INCH															
		4 PLACES	± ---	± ---															
3 PLACES	± ---	± ---																	
2 PLACES	± 0.13	± ---																	
1 PLACE	± 0.25	± ---																	
ANGULAR ±1/2°	CHECKED BY DATE KWEBER 2011/09/01	APPROVED BY DATE RMKHAN 2011/09/21	MOLEX INCORPORATED																
DRAFT WHERE APPLICABLE MUST REMAIN WITHIN DIMENSIONS	SEE TABLE	MATERIAL NO.	DOCUMENT NO. SD-111051-800	SHEET NO. 1 OF 3															

GND	A1	→	B1	GND
PETp0	A2	→	B2	PERp0
PETn0	A3	→	B3	PERn0
GND	A4	→	B4	GND
PETp1	A5	→	B5	PERp1
PETn1	A6	→	B6	PERn1
GND	A7	→	B7	GND
PETp2	A8	→	B8	PERp2
PETn2	A9	→	B9	PERn2
GND	A10	→	B10	GND
PETp3	A11	→	B11	PERp3
PETn3	A12	→	B12	PERn3
GND	A13	→	B13	GND
CREFCLK+	A14	→	A14	CREFCLK+
CREFCLK-	A15	→	A15	CREFCLK-
GND	A16	→	A16	GND
NC	A17	→	A17	NC
NC	A18	→	A18	NC
SB_RTN	A19	→	A19	SB_RTN
CPRSNT#	A20	→	A20	CPRSNT#
CPWRON	A21	→	A21	CPWRON
GND	A22	→	B22	GND
PETp4	A23	→	B23	PERp4
PETn4	A24	→	B24	PERn4
GND	A25	→	B25	GND
PETp5	A26	→	B26	PERp5
PETn5	A27	→	B27	PERn5
GND	A28	→	B28	GND
PETp6	A29	→	B29	PERp6
PETn6	A30	→	B30	PERn6
GND	A31	→	B31	GND
PETp7	A32	→	B32	PERp7
PETn7	A33	→	B33	PERn7
GND	A34	→	B34	GND
GND	B1	←	A1	GND
PERp0	B2	←	A2	PETp0
PERn0	B3	←	A3	PETn0
GND	B4	←	A4	GND
PERp1	B5	←	A5	PETp1
PERn1	B6	←	A6	PETn1
GND	B7	←	A7	GND
PERp2	B8	←	A8	PETp2
PERn2	B9	←	A9	PETn2
GND	B10	←	A10	GND
PERp3	B11	←	A11	PETp3
PERn3	B12	←	A12	PETn3
GND	B13	←	A13	GND
NC	B14	←	A14	NC
NC	B15	←	A15	NC
NC	B16	←	A16	NC
NC	B17	←	A17	NC
NC	B18	←	A18	NC
NC	B19	←	A19	NC
CWAKE#	B20	←	A20	CWAKE#
CPRST#	B21	←	A21	CPRST#
GND	B22	←	A22	GND
PERp4	B23	←	A23	PETp4
PERn4	B24	←	A24	PETn4
GND	B25	←	A25	GND
PERp5	B26	←	A26	PETp5
PERn5	B27	←	A27	PETn5
GND	B28	←	A28	GND
PERp6	B29	←	A29	PETp6
PERn6	B30	←	A30	PETn6
GND	B31	←	A31	GND
PERp7	B32	←	A32	PETp7
PERn7	B33	←	A33	PETn7
GND	B34	←	A34	GND



I-PASS™ IS A TRADEMARK OF MOLEX

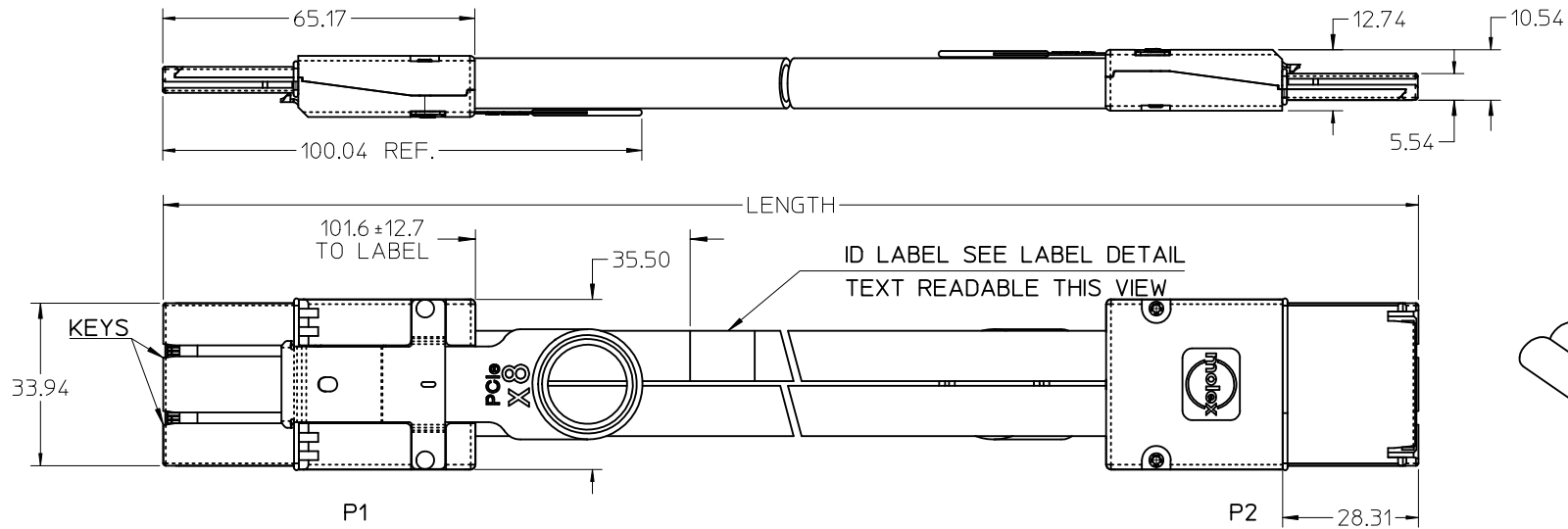
<b>ENTER DESCRIPTION</b> EC NO: USY2012-0262 DRWN:TPRATT 2011/08/05 CHKD:KWEBER 2011/09/01 APPR:RMKHAN 2011/09/21	<b>QUALITY SYMBOLS</b> ▽=0 ▽=0	<b>GENERAL TOLERANCES (UNLESS SPECIFIED)</b>		<b>DIMENSION STYLE</b> MM ONLY		SCALE 1:1	DESIGN UNITS METRIC	THIRD ANGLE PROJECTION		
				DRAWN BY TPRATT	DATE 2011/08/05	TITLE I-PASS X8 CABLE ASSEMBLY GEN 2				
				CHECKED BY KWEBER	DATE 2011/09/01					
				APPROVED BY RMKHAN	DATE 2011/09/21	MOLEX MOLEX INCORPORATED				
		MATERIAL NO. SEE TABLE		DOCUMENT NO. SD-111051-800			SHEET NO. 2 OF 3			
DRAFT WHERE APPLICABLE MUST REMAIN WITHIN DIMENSIONS										
THIS DRAWING CONTAINS INFORMATION THAT IS PROPRIETARY TO MOLEX INCORPORATED AND SHOULD NOT BE USED WITHOUT WRITTEN PERMISSION										



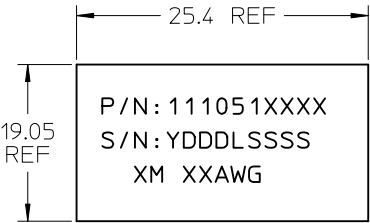
CABLE GAGE	24	26	28
A. CABLE DIAMETER	10.4	9.3	8.4
B. MINIMUM OUTER RADIUS	46.9	41.7	37.7
C. FACEPLATE TO OUTER RADIUS	102.2	97.0	93.0

IPASS™ IS A TRADEMARK OF MOLEX

<b>ENTER DESCRIPTION</b> EC NO: USY2012-0262 DRWN:TPRATT 2011/08/05 CHKD:KWEBER 2011/09/01 APPR:RMKHAN 2011/09/21	QUALITY SYMBOLS ▽=0 ▽=0	GENERAL TOLERANCES (UNLESS SPECIFIED)		DIMENSION STYLE	SCALE	DESIGN UNITS	THIRD ANGLE PROJECTION	
				MM ONLY	1:1	METRIC		
		4 PLACES	± ---	± ---	DRAWN BY	DATE	TITLE	
		3 PLACES	± ---	± ---	TPRATT	2011/08/05	I-PASS X8 CABLE ASSEMBLY GEN 2	
2 PLACES	± 0.13	± ---	CHECKED BY	DATE				
1 PLACE	± 0.25	± ---	KWEBER	2011/09/01	MOLEX INCORPORATED			
ANGULAR ±1/2°			APPROVED BY	DATE				
DRAFT WHERE APPLICABLE MUST REMAIN WITHIN DIMENSIONS		SEE TABLE		RMKHAN	2011/09/21	DOCUMENT NO.	SHEET NO.	
				MATERIAL NO.		SD-111051-800	3 OF 3	
				THIS DRAWING CONTAINS INFORMATION THAT IS PROPRIETARY TO MOLEX INCORPORATED AND SHOULD NOT BE USED WITHOUT WRITTEN PERMISSION				



ID LABEL  
1 REQUIRED



YDDLSSSS  
Y-- YEAR, THE LAST DIGIT OF YEAR  
DDD---DAY OF THE YEAR  
L---LOCATION (1 = HPC, 2 = GUAD, 3 = DG)  
SSSS---SERIAL NO.

P/N	LENGTH	TOLERANCE	GAUGE	JACKET RATING
1110510800	0.5M	0.03M	28	CL2
1110510801	1M	0.05M	28	CL2
1110510802	2M	0.05M	28	CL2
1110510803	3M	0.05M	28	CL2
1110510804	4M	0.10M	28	CL2
1110510805	5M	0.10M	26	CL2
1110510806	6M	0.13M	26	CL2
1110510807	7M	0.13M	24	CL2

- NOTES:
- MATERIAL= BACKSHELLS - ZINC DIECAST  
PULL - NYLON  
CABLE JACKET RATING - SEE TABLE.
  - LENGTH AND TOLERANCE - SEE TABLE
  - ELECTRICAL PERFORMANCE PER PCI EXPRESS EXTERNAL CABLING SPEC.REV 2.0 DRAFT 0.5
  - PLUG MATES TO RECEPTACLE 75586-0002, AND EMI GUIDE HOUSING ASSY. 74540-0100
  - LEAD FREE, NO RoHS EXEMPTIONS

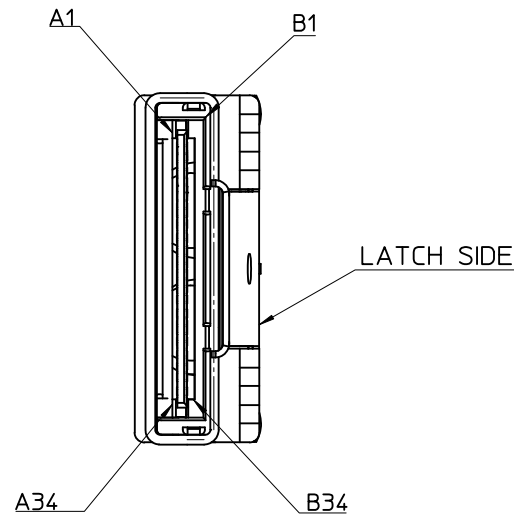
IPASS™ IS A TRADEMARK OF MOLEX

INITIAL RELEASE EC NO: USY2012-0262 DRWN:TPRATT 2011/08/05 CHKD:KWEBER 2011/09/01 APPR:RMKHAN 2011/09/21	QUALITY SYMBOLS ▽=0 ▽=0	GENERAL TOLERANCES (UNLESS SPECIFIED)	DIMENSION STYLE MM ONLY	SCALE 1:1	DESIGN UNITS METRIC	THIRD ANGLE PROJECTION													
		<table border="1"> <thead> <tr> <th></th> <th>mm</th> <th>INCH</th> </tr> </thead> <tbody> <tr> <td>4 PLACES</td> <td>± ---</td> <td>± ---</td> </tr> <tr> <td>3 PLACES</td> <td>± ---</td> <td>± ---</td> </tr> <tr> <td>2 PLACES</td> <td>± 0.13</td> <td>± ---</td> </tr> <tr> <td>1 PLACE</td> <td>± 0.25</td> <td>± ---</td> </tr> </tbody> </table>		mm	INCH	4 PLACES	± ---	± ---	3 PLACES	± ---	± ---	2 PLACES	± 0.13	± ---	1 PLACE	± 0.25	± ---	DRAWN BY DATE TPRATT 2011/08/05	TITLE I-PASS X8 CABLE ASSEMBLY GEN 2
			mm	INCH															
		4 PLACES	± ---	± ---															
3 PLACES	± ---	± ---																	
2 PLACES	± 0.13	± ---																	
1 PLACE	± 0.25	± ---																	
ANGULAR ±1/2°	CHECKED BY DATE KWEBER 2011/09/01	APPROVED BY DATE RMKHAN 2011/09/21	MOLEX INCORPORATED																
DRAFT WHERE APPLICABLE MUST REMAIN WITHIN DIMENSIONS	SEE TABLE	MATERIAL NO.	DOCUMENT NO. SD-111051-800	SHEET NO. 1 OF 3															

THIS DRAWING CONTAINS INFORMATION THAT IS PROPRIETARY TO MOLEX INCORPORATED AND SHOULD NOT BE USED WITHOUT WRITTEN PERMISSION

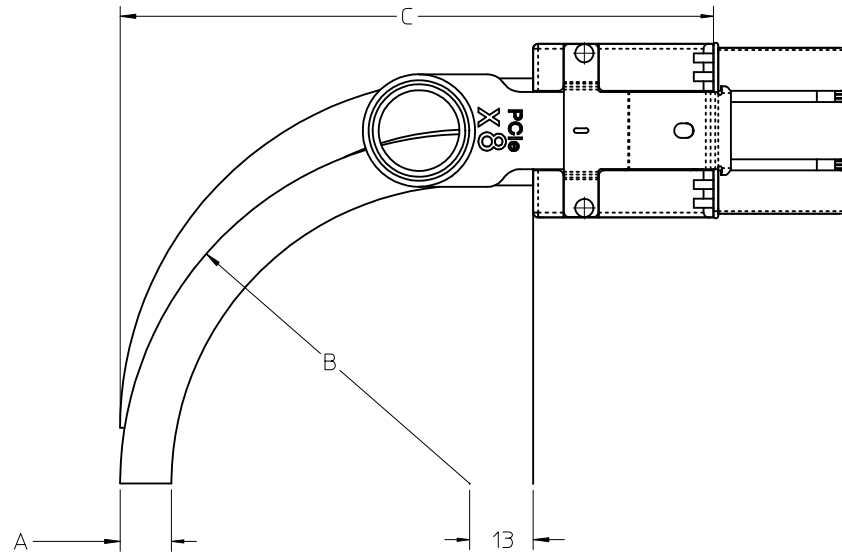


GND	A1	→	B1	GND
PETp0	A2	→	B2	PERp0
PETn0	A3	→	B3	PERn0
GND	A4	→	B4	GND
PETp1	A5	→	B5	PERp1
PETn1	A6	→	B6	PERn1
GND	A7	→	B7	GND
PETp2	A8	→	B8	PERp2
PETn2	A9	→	B9	PERn2
GND	A10	→	B10	GND
PETp3	A11	→	B11	PERp3
PETn3	A12	→	B12	PERn3
GND	A13	→	B13	GND
CREFCLK+	A14	→	A14	CREFCLK+
CREFCLK-	A15	→	A15	CREFCLK-
GND	A16	→	A16	GND
NC	A17	→	A17	NC
NC	A18	→	A18	NC
SB_RTN	A19	→	A19	SB_RTN
CPRSNT#	A20	→	A20	CPRSNT#
CPWRON	A21	→	A21	CPWRON
GND	A22	→	B22	GND
PETp4	A23	→	B23	PERp4
PETn4	A24	→	B24	PERn4
GND	A25	→	B25	GND
PETp5	A26	→	B26	PERp5
PETn5	A27	→	B27	PERn5
GND	A28	→	B28	GND
PETp6	A29	→	B29	PERp6
PETn6	A30	→	B30	PERn6
GND	A31	→	B31	GND
PETp7	A32	→	B32	PERp7
PETn7	A33	→	B33	PERn7
GND	A34	→	B34	GND
GND	B1	←	A1	GND
PERp0	B2	←	A2	PETp0
PERn0	B3	←	A3	PETn0
GND	B4	←	A4	GND
PERp1	B5	←	A5	PETp1
PERn1	B6	←	A6	PETn1
GND	B7	←	A7	GND
PERp2	B8	←	A8	PETp2
PERn2	B9	←	A9	PETn2
GND	B10	←	A10	GND
PERp3	B11	←	A11	PETp3
PERn3	B12	←	A12	PETn3
GND	B13	←	A13	GND
NC	B14	←	A14	NC
NC	B15	←	A15	NC
NC	B16	←	A16	NC
NC	B17	←	A17	NC
NC	B18	←	A18	NC
NC	B19	←	A19	NC
CWAKE#	B20	←	A20	CWAKE#
CPRST#	B21	←	A21	CPRST#
GND	B22	←	A22	GND
PERp4	B23	←	A23	PETp4
PERn4	B24	←	A24	PETn4
GND	B25	←	A25	GND
PERp5	B26	←	A26	PETp5
PERn5	B27	←	A27	PETn5
GND	B28	←	A28	GND
PERp6	B29	←	A29	PETp6
PERn6	B30	←	A30	PETn6
GND	B31	←	A31	GND
PERp7	B32	←	A32	PETp7
PERn7	B33	←	A33	PETn7
GND	B34	←	A34	GND



I-PASS™ IS A TRADEMARK OF MOLEX

<b>ENTER DESCRIPTION</b> EC NO: USY2012-0262 DRWN:TPRATT 2011/08/05 CHKD:KWEBER 2011/09/01 APPR:RMKHAN 2011/09/21	<b>QUALITY SYMBOLS</b> ▽=0 ▽=0	<b>GENERAL TOLERANCES (UNLESS SPECIFIED)</b>		<b>DIMENSION STYLE</b> MM ONLY		SCALE 1:1	DESIGN UNITS METRIC	THIRD ANGLE PROJECTION		
				DRAWN BY TPRATT	DATE 2011/08/05	TITLE I-PASS X8 CABLE ASSEMBLY GEN 2				
				CHECKED BY KWEBER	DATE 2011/09/01					
				APPROVED BY RMKHAN	DATE 2011/09/21	MOLEX INCORPORATED				
		DRAFT WHERE APPLICABLE MUST REMAIN WITHIN DIMENSIONS		MATERIAL NO. SEE TABLE		DOCUMENT NO. SD-111051-800		SHEET NO. 2 OF 3		
THIS DRAWING CONTAINS INFORMATION THAT IS PROPRIETARY TO MOLEX INCORPORATED AND SHOULD NOT BE USED WITHOUT WRITTEN PERMISSION										



CABLE GAGE	24	26	28
A. CABLE DIAMETER	10.4	9.3	8.4
B. MINIMUM OUTER RADIUS	46.9	41.7	37.7
C. FACEPLATE TO OUTER RADIUS	102.2	97.0	93.0

IPASS™ IS A TRADEMARK OF MOLEX

<b>ENTER DESCRIPTION</b> EC NO: USY2012-0262 DRWN:TPRATT 2011/08/05 CHKD:KWEBER 2011/09/01 APPR:RMKHAN 2011/09/21	QUALITY SYMBOLS ▽=0 ▽=0	GENERAL TOLERANCES (UNLESS SPECIFIED)		DIMENSION STYLE <b>MM ONLY</b>	SCALE 1:1	DESIGN UNITS METRIC	THIRD ANGLE PROJECTION
		4 PLACES ± --- ± ---	DRAWN BY DATE TPRATT 2011/08/05	TITLE <b>I-PASS X8 CABLE ASSEMBLY GEN 2</b>			
		3 PLACES ± --- ± ---	CHECKED BY DATE KWEBER 2011/09/01				
		2 PLACES ± 0.13 ± ---	APPROVED BY DATE RMKHAN 2011/09/21	MATERIAL NO.	DOCUMENT NO.	SHEET NO.	
1 PLACE ± 0.25 ± ---	ANGULAR ± 1/2°	DRAFT WHERE APPLICABLE MUST REMAIN WITHIN DIMENSIONS	SEE TABLE	SD-111051-800	3 OF 3		

**MOLEX INCORPORATED**

THIS DRAWING CONTAINS INFORMATION THAT IS PROPRIETARY TO MOLEX INCORPORATED AND SHOULD NOT BE USED WITHOUT WRITTEN PERMISSION