

Technical specification:

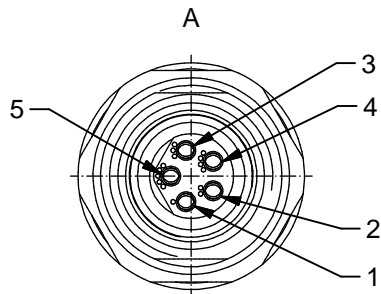
Rated voltage: IEC 61076-2-104	30 V
Current rating: IEC 61076-2-104	3 A at 40°C
Insulation resistance: IEC 60512	>=100 MΩ
Pollution degree: IEC 60664-1	3/2
Degree of protection: IEC 60529	IP 67, in mated condition
Temperature range:	-30°C ... +80°C
Mating cycles: IEC 60512-9a	>=100

Materials:

Contact:	CuZn
Contact plating:	Nickel, gold plated
Contact carrier:	PA6, UL 94
Sealing:	FPM
Conternut:	CuZn, nickel plated
Socket housing:	CuZn, nickel plated
Grouting:	Polyurethane-resin, UL 94

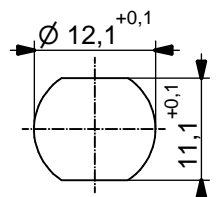
Installation specification:

Recommended torque:	0,6 - 0,8 Nm
Conec installation tool:	Torque wrench: 36-000200 Insert across flats 14: 36-000370

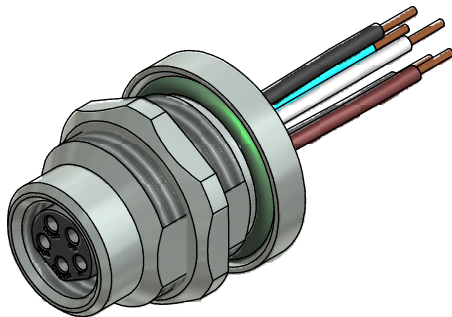


Contact assignment:

- 1) brown
- 2) white
- 3) blue
- 4) black
- 5) grey



Minimum wall thickness
1,5mm, alternativ panel
cut-out d=12,1



Part no:	Description:	Pos	Length L:	Wire:
42-01149	SAL - 8B - FKH5.1 - 0,2	5	0,2m	AWG 24 PVC, UL
42-xxxxx	SAL - 8B - FKH5.1 - ...	5	x	

DO NOT ALTER CAD DRAWING BY HAND Directive 2011/65/EU RoHS compliant	dim. in mm	title: <h2 style="margin: 0;">Female socket M8x1 with wire, backmounting</h2>								
	<table border="1" style="font-size: 8px;"> <tr> <td></td> <td>date</td> <td>name</td> </tr> <tr> <td>drawn</td> <td>12.08.13</td> <td>Christen</td> </tr> <tr> <td>appd.</td> <td>12.08.13</td> <td>Mankopf</td> </tr> </table>					date	name	drawn	12.08.13	Christen
		date	name							
	drawn	12.08.13	Christen							
appd.	12.08.13	Mankopf								
tolerance of wire: L <= 0,5m: L + 20mm L > 0,5m: L + 4%	dwg no: <h1 style="margin: 0; text-align: center;">42K1A530</h1>									
general tolerance: 0 ± 0,50mm 0,0 ± 0,25mm 0,00 ± 0,10mm	part no:									

THIS DRAWING MAY NOT BE COPIED OR REPRODUCED IN ANY WAY, AND MAY NOT BE PASSED ON TO A THIRD PARTY WITHOUT WRITTEN PERMISSION. OWNERSHIP AND COPYRIGHT OF CONEC GmbH

