

DO NOT  
SCALE FROM  
THIS PRINT

PRF04-P-C-EP-335A-SS

SERIES  
-04: TNCA

GENDER  
-P: PLUG

TYPE  
-C: CABLE

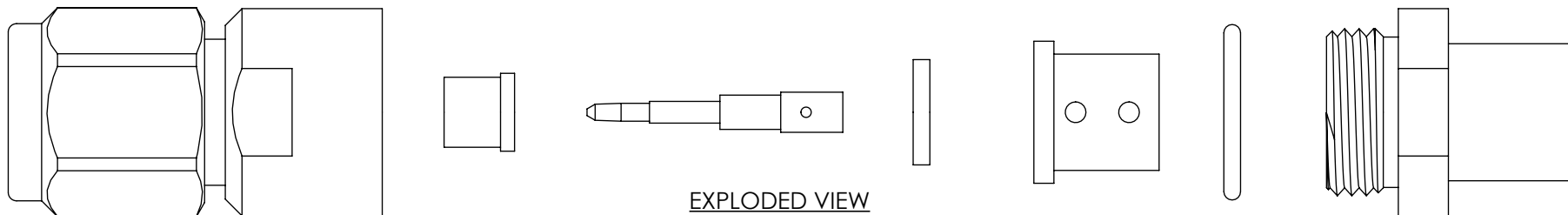
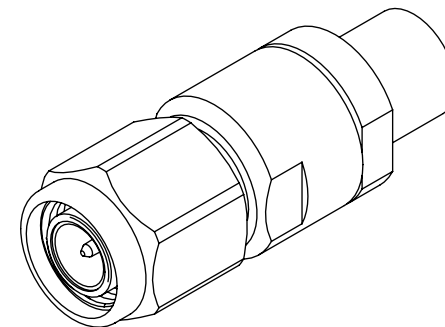
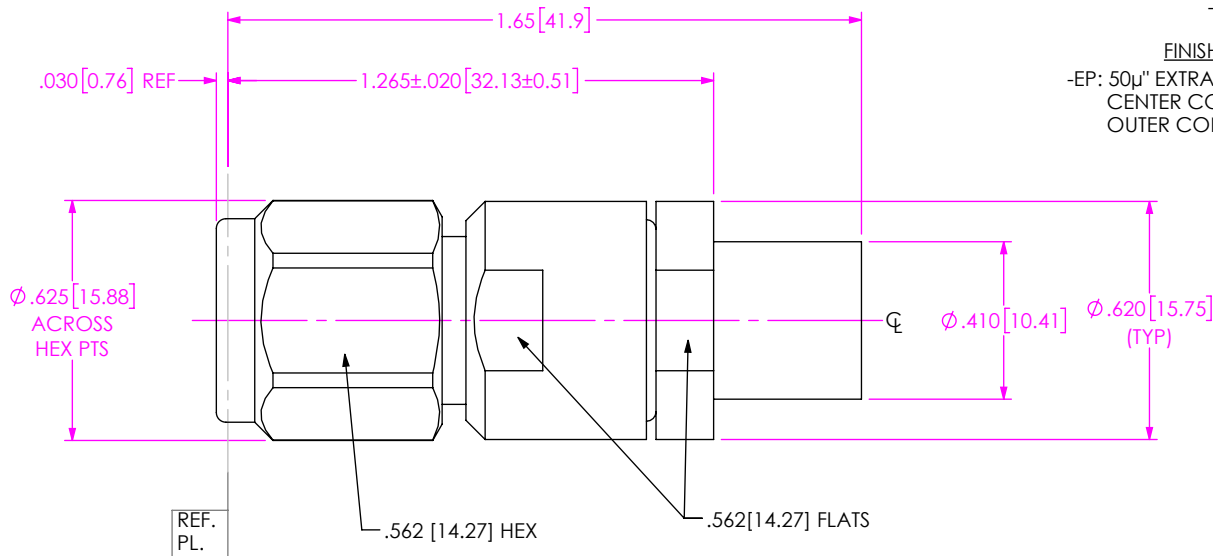
FINISH

-EP: 50µ" EXTRA HEAVY GOLD  
CENTER CONTACT, PASSIVATED  
OUTER CONTACT

TERMINATION  
-S: SOLDER CLAMP

ORIENTATION  
-S: STRAIGHT

CABLE TYPE  
-335A: HARBOUR LL335I



EXPLODED VIEW  
NOT TO SCALE  
(FOR CLARITY ONLY)

NOTES:

- MATERIAL:**  
BODY, CLAMP NUT, COUPLING NUT: STAINLESS STEEL.  
CONTACT, LOCK RING: BERYLLIUM COPPER.  
SOLDER FERRULE: BRASS ALLOY.  
INSULATOR: PTFE.  
BEAD: ULTEM.  
O-RING, GASKET: SILICONE RUBBER.
- FINISH:**  
BODY, CLAMP NUT, COUPLING NUT: PASSIVATED.  
CONTACT: 50µ" MIN. GOLD OVER 50µ" MIN. NICKEL PLATE.  
SOLDER FERRULE: 10µ" MIN. GOLD OVER 50µ" MIN. NICKEL PLATE.
- PCI P/N: 3558.

F:\DWG\MISC\MKTG\PRF04-P-C-EP-335A-SS-MKT.SLDDRW

UNLESS OTHERWISE SPECIFIED,  
DIMENSIONS ARE IN INCHES.  
TOLERANCES ARE:  
DECIMALS                      ANGLES  
.XX: ±.01 [0.3]                      1°  
.XXX: ±.005 [0.13]  
.XXXX: ±.0005 [0.013]

**PROPRIETARY NOTE**  
THIS DOCUMENT CONTAINS CONFIDENTIAL AND  
PROPRIETARY INFORMATION AND ALL DESIGN,  
MANUFACTURING, REPRODUCTION, USE, PATENT RIGHTS  
AND SALES RIGHTS ARE EXPRESSLY RESERVED BY SAMTEC,  
INC. THIS DOCUMENT SHALL NOT BE DISCLOSED, IN WHOLE  
OR PART, TO ANY UNAUTHORIZED PERSON OR ENTITY NOR  
REPRODUCED, TRANSFERRED OR INCORPORATED IN ANY  
OTHER PROJECT IN ANY MANNER WITHOUT THE EXPRESS  
WRITTEN CONSENT OF SAMTEC, INC.



520 PARK EAST BLVD., NEW ALBANY, IN 47150  
PHONE: 812-944-6733      FAX: 812-948-5047  
e-Mail: info@SAMTEC.com      code 55322

DO NOT SCALE DRAWING

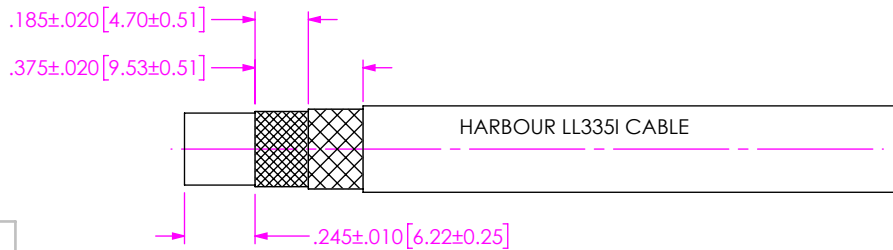
SHEET SCALE: 2:1

DESCRIPTION: TNCA PLUG, SOLDER CLAMP FOR  
HARBOUR CABLE LL335I CABLE

DWG. NO. PRF04-P-C-EP-335A-SS

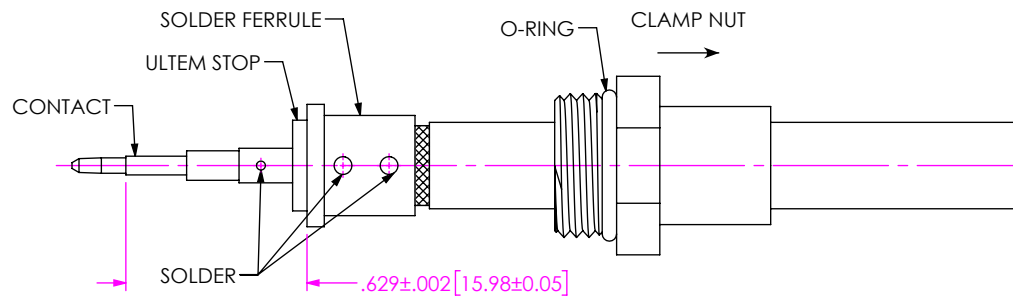
BY: EVE L                      01/27/2021      SHEET 1 OF 2

# CABLE APPLICATION VIEWS



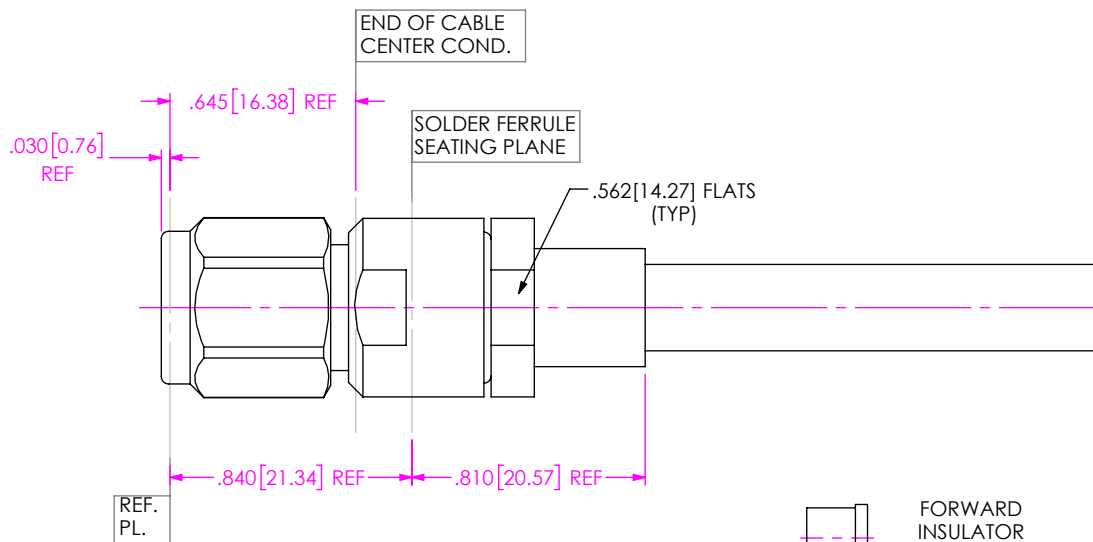
IN-PROCESS VIEW 1

1A. TRIM CABLE TO EXPOSE BRAIDS AND DIELECTRIC AS SHOWN.



IN-PROCESS VIEW 2

- 2A. SLIDE CLAMP NUT OVER CABLE AS SHOWN.
- 2B. INSERT CABLE INTO SOLDER FERRULE UNTIL INNER BRAID SEATS IN FERRULE. THEN SOLDER CABLE BRAIDS TO FERRULE WHERE SHOWN.
- 2C. TRIM CABLE DIELECTRIC FLUSH WITH FACE OF FERRULE.
- 2D. SLIDE DIELECTRIC STOP OVER CABLE CENTER CONDUCTOR AND SOLDER CONTACT FLUSH AGAINST STOP TO DIMENSION SHOWN.



IN-PROCESS VIEW 3

- 3A. INSERT FORWARD INSULATOR INTO CONNECTOR IN ORIENTATION SHOWN.
- 3B. INSERT CABLE/CONTACT SUB-ASSEMBLY INTO CONNECTOR UNTIL SEATED AND TIGHTEN CLAMP NUT TO 35-45 IN-LBS.

**PROPRIETARY NOTE**  
 THIS DOCUMENT CONTAINS CONFIDENTIAL AND PROPRIETARY INFORMATION AND ALL DESIGN, MANUFACTURING, REPRODUCTION, USE, PATENT RIGHTS AND SALES RIGHTS ARE EXPRESSLY RESERVED BY SAMTEC, INC. THIS DOCUMENT SHALL NOT BE DISCLOSED, IN WHOLE OR PART, TO ANY UNAUTHORIZED PERSON OR ENTITY NOR REPRODUCED, TRANSFERRED OR INCORPORATED IN ANY OTHER PROJECT IN ANY MANNER WITHOUT THE EXPRESS WRITTEN CONSENT OF SAMTEC, INC.



520 PARK EAST BLVD, NEW ALBANY, IN 47150  
 PHONE: 812-944-6733 FAX: 812-948-5047  
 e-Mail info@SAMTEC.com code 55322

DO NOT SCALE DRAWING

SHEET SCALE: 3:2

DESCRIPTION: TNCA PLUG, SOLDER CLAMP FOR HARBOUR CABLE LL335I CABLE

DWG. NO. PRF04-P-C-EP-335A-SS

BY: EVE L 01/27/2021 SHEET 2 OF 2