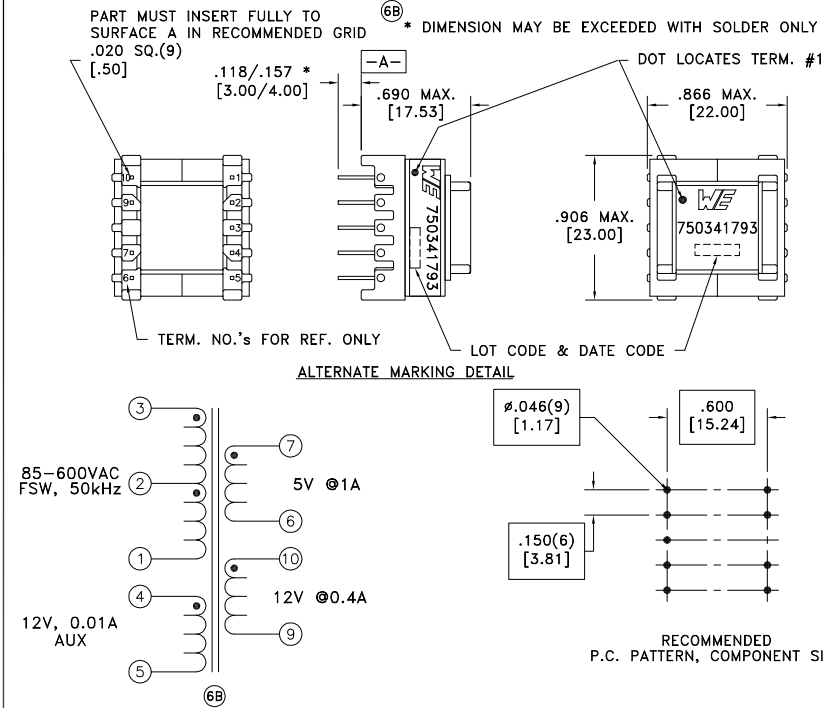


| | | |
|-------------------|------|---------------|
| CUSTOMER TERMINAL | RoHS | LEAD(Pb)-FREE |
| Sn96%, Ag4% | Yes | Yes |



ELECTRICAL SPECIFICATIONS @ 25°C unless otherwise noted:

| PARAMETER | TEST CONDITIONS | VALUE |
|--------------------|--|-----------------|
| D.C. RESISTANCE | 3-1 @20°C | 2.380 ohms ±10% |
| D.C. RESISTANCE | 4-5 @20°C | 0.955 ohms ±10% |
| D.C. RESISTANCE | 7-6 @20°C | 0.045 ohms max. |
| D.C. RESISTANCE | 10-9 @20°C | 0.207 ohms ±10% |
| INDUCTANCE | 3-1 50kHz, 1.0VAC, Ls | 2.25mH ±5% |
| LEAKAGE INDUCTANCE | 3-1 tie(4+5+6+7+9+10), 100kHz, 100mVAC, Ls | 30.0uH max. |
| DIELECTRIC | 1-10 tie(3+4, 7+9), 3000VAC, 1 second | - |
| DIELECTRIC | 1-Core tie(3+4), 1500VAC, 1 second | - |
| TURNS RATIO | (3-1):(4-5) | 6.20:1, ±1% |
| TURNS RATIO | (3-1):(7-6) | 14.90:1, ±1% |
| TURNS RATIO | (3-1):(10-9) | 6.47:1, ±1% |

GENERAL SPECIFICATIONS:

OPERATING TEMPERATURE RANGE: -40°C to +125°C including temp rise.

Wire insulation & RoHS status not affected by wire color.
Wire insulation color may vary depending on availability.

| | | | | | | |
|------|------|--|--|--|-------------------------------------|------------------------------|
| REV. | DATE | Packaging Specifications Method: Tray PKG-0736 www.we-online.com/midcom | | Tolerances unless otherwise specified: Angles: ±1° Fractions: ±1/64 Decimals: ±.005 [.13] Footprint: ±.001 [.03] | DRAWING TITLE TRANSFORMER | PART NO. 750341793 |
| 6B | 3/17 | | | This drawing is dual dimensioned. Dimensions in brackets are in millimeters. | eiSos p/n: 750341793 | |
| 6A | 7/13 | SEE REVISION SHEET FOR REVISION LEVEL | | | | SPECIFICATION SHEET 1 OF 1 |