

4

3

2

1

THIS DRAWING IS UNPUBLISHED. RELEASED FOR PUBLICATION  
© COPYRIGHT ALL RIGHTS RESERVED.

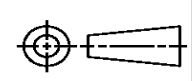
LOC	DIST	REVISIONS			
P	LTR	DESCRIPTION	DATE	DWN	APVD
	A1	ECR-15-000199	07JAN2015	GK	HMR

# REPLACED BY OCEAN STYLE APPLICATOR PART NUMBER 2266297-1

FOR REPLACEMENT PARTS FOR APPLICATOR 1528771 REFER TO ADDITIONAL PAGE(S). SPARE PARTS KIT (IF LISTED) WILL REMAIN AVAILABLE.

THE REPLACEMENT OCEAN STYLE APPLICATOR HAS THE SAME TERMINATOR/PRESS INTERFACE AS APPLICATOR 1528771

THIS DRAWING IS A CONTROLLED DOCUMENT.		DWN	GOPALAKRISHNA HV														
DIMENSIONS:		CHK	RAGHAVENDRA														
TOLERANCES UNLESS OTHERWISE SPECIFIED:		APVD	RAGHAVENDRA														
<table border="0"> <tr><td>0 PLC</td><td>±</td></tr> <tr><td>1 PLC</td><td>±</td></tr> <tr><td>2 PLC</td><td>±</td></tr> <tr><td>3 PLC</td><td>±</td></tr> <tr><td>4 PLC</td><td>±</td></tr> <tr><td>ANGLES</td><td>±</td></tr> </table>		0 PLC	±	1 PLC	±	2 PLC	±	3 PLC	±	4 PLC	±	ANGLES	±	PRODUCT SPEC	NAME		
0 PLC	±																
1 PLC	±																
2 PLC	±																
3 PLC	±																
4 PLC	±																
ANGLES	±																
MATERIAL		APPLICATION SPEC	FINE ADJUST SIDE FEED HDI APPLICATOR														
FINISH		WEIGHT	SIZE	CAGE CODE	DRAWING NO												
			A3		©- 1528771												
		CUSTOMER DRAWING	SCALE	SHEET 1 OF 2	REV A1												



PART NUMBER	REV	TERMINATOR	FEED TYPE	DESCRIPTION
1528771-1	A	LEADMAKER	MECH POST FEED	CUTS CARRIER
1528771-2	A	BENCH	MECH PRE FEED	CUTS CARRIER
1528771-6	A	LEADMAKER	MECH POST FEED	CONTINUOUS CARRIER
7-1528771-1	A	LEADMAKER	MECH POST FEED	-1 AND SPARE PARTS
7-1528771-2	A	BENCH	MECH PRE FEED	-2 AND SPARE PARTS
7-1528771-6	A	LEADMAKER	MECH POST FEED	-6 AND SPARE PARTS
7-1528771-7	A	-	-	SPARE PARTS KIT

CRIMP	SIZE	TYPE	RANGE
WIRE	2.29 [ .090 IN]	F	0.50-1.25mm <sup>2</sup> or 20-16 AWG
INSUL	3.56 [ .140 IN]	O	2.35-3.30 [ .093-.130 IN]

WIRE STRIP LENGTH SEE APPL. SPEC	APPL INSTRUCTIONS 408-8322 & 408-8490
TERMINAL APPL SPEC	FEED [13.60 [ .535 IN]

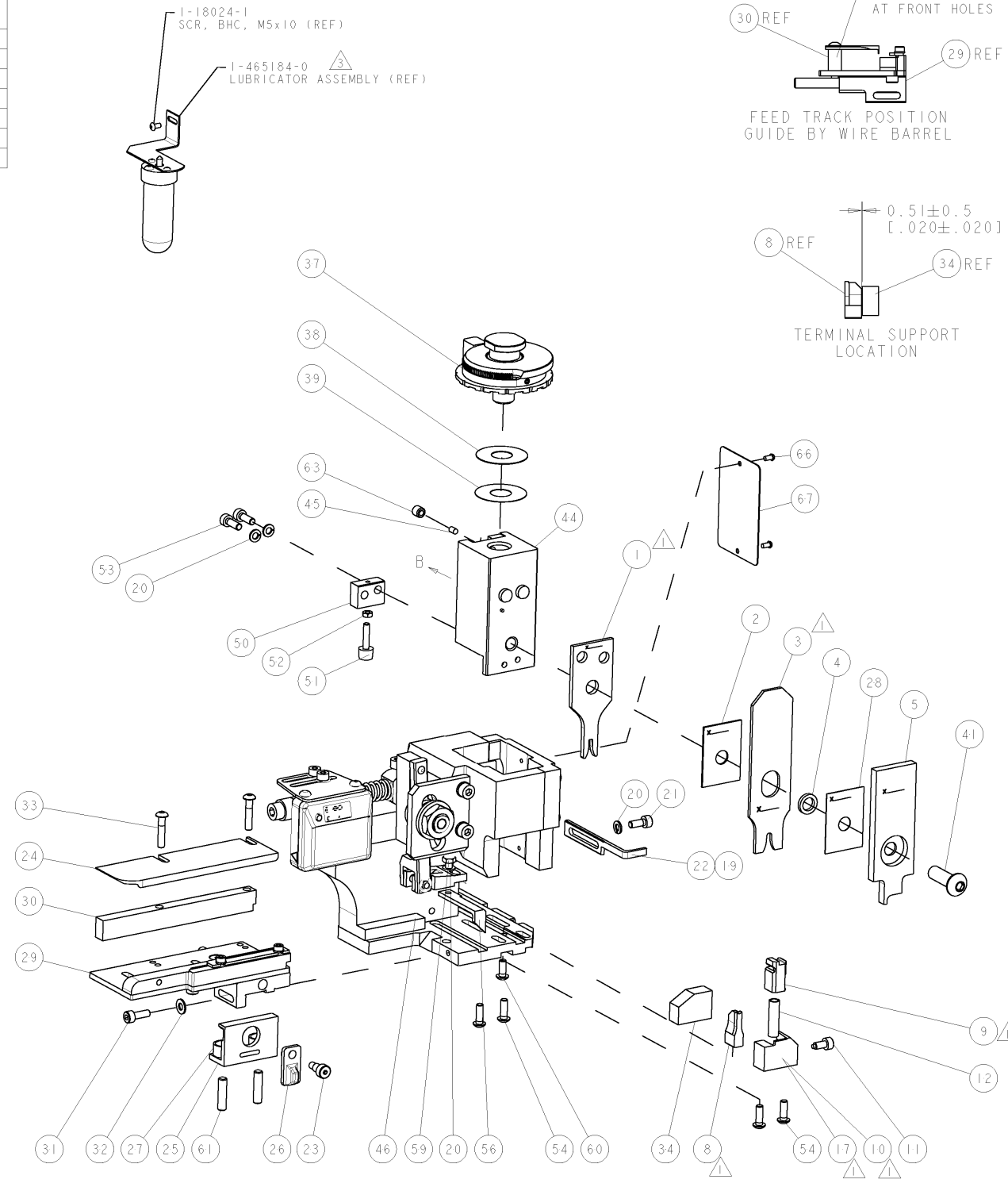
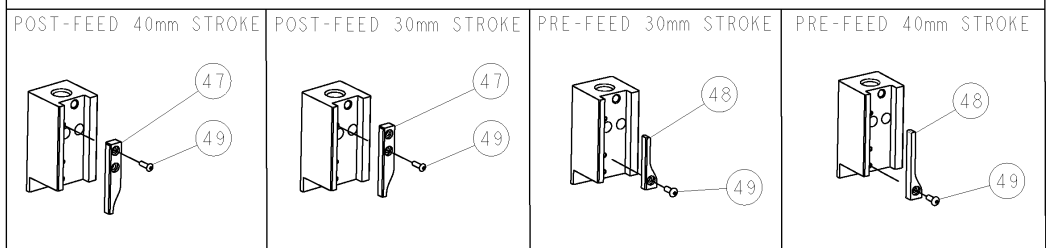
WIRE SIZE	CRIMP HEIGHT	REF SETTING
1.25mm <sup>2</sup> or 16AWG	1.55 ±0.05 [ .061 ±.002 IN]	B 2
1.00mm <sup>2</sup>	1.42 ±0.05 [ .056 ±.002 IN]	C 2
0.75mm <sup>2</sup> or 18AWG	1.35 ±0.05 [ .053 ±.002 IN]	C 8
0.50mm <sup>2</sup> or 20AWG	1.24 ±0.05 [ .049 ±.002 IN]	D 7

RECOMMENDED SPARE PARTS.

- GREASE RAM, CAM, CAM FOLLOWER AND FEED ROD LIGHTLY.
- CERTAIN TERMINALS REQUIRE LUBRICATION. REFER TO THE APPLICATOR INSTRUCTION SHEET FOR MORE INFORMATION.
- LUBRICATE DAILY PER THE APPLICATOR INSTRUCTION SHEET SUPPLIED WITH THE APPLICATOR.
- APPLICATION SPEC. 114-2082 REFERS TO AWG SIZES ONLY.

**\* WARNING**  
ON INSTALLATION, SET WIRE DISC TO LARGEST WIRE SIZE SETTING. USE OF SETTINGS BELOW MIN. REQUIRED CRIMP HEIGHT SETTING WILL CAUSE DAMAGE TO CRIMP TOOLING.

VIEW B ROTATED 180°



SET UP GAGE 458637-3

REV	DESCRIPTION	DATE	BY	APPV
A	SEE ECO-07-006237	16MAR2007	LJL	MC

REV	DESCRIPTION	DATE	BY	APPV
73				
72				
71	DOCUMENTATION PACKAGE			
70				
69				
68				
67	PLATE, IDENTIFICATION			
66	SCREW, DRIVE			
65				
64				
63	SCR, SET, CUP POINT M6 X 6.0			
62				
61	SCR, SET, FLT POINT M5 X 20.0			
60	SCR, BTN SKT HD CAP (M4 X 10.0)			
59	SCR, HEX HD CAP M4 X 8.0			
58				
57				
56	PAWL, FEED			
55				
54	SCR, BTN SKT HD CAP (M4 X 12.0)			
53	SCR, SKT HD CAP M4 X 12.0			
52	NUT, HEX, REG M3			
51	BUMPER, HOLD DOWN			
50	SPACER, TONKER			
49	SCR, BTN SKT HD CAP (M3 X 10.0)			
48	CAM, UNIVERSAL PRE FEED			
47	CAM, UNIVERSAL POST-FEED			
46	APPLICATOR SUBASSEMBLY, HD1			
45	PLUG, NYLON			
44	RAM			
43				
42				
41	SCR, BTN SKT HD CAP (M8 X 25.0)			
40				
39	SHIM SUB-ASSY			
38	SHIM			
37	FINE ADJUST HEAD ASSEMBLY			
36				
35				
34	SUPPORT, TERMINAL			
33	SCR, BTN SKT HD CAP (M4 X 20.0)			
32	WASHER, FLAT, REG M4			
31	SCR, SKT HD CAP M4 X 12.0			
30	SPACER, STRIP GUIDE			
29	STRIP GUIDE ASSEMBLY			
28	SPACER, CRIMPER			
27	SPRING, COMPRESSION			
26	LEVER, DRAG RELEASE			
25	DRAG, TERMINAL			
24	PLATE, STRIP GUIDE			
23	SCR, SKT HD SHLDR 5.0 DIA X 6.0			
22	STRIPPER			
21	SCR, SKT HD CAP M4 X 10.0			
20	WASHER, SPRG LOCK, REG M4			
19	STRIPPER			
18				
17	SHEAR HOLDER, FRONT			
16				
15				
14				
13				
12	SPRING, COMPRESSION			
11	STOP, SHEAR			
10	SHEAR HOLDER, FRONT, CUT			
9	FLOATING SHEAR, FRONT			
8	ANVIL, COMBINATION			
7				
6				
5	DEPRESSOR, SHEAR			
4	BLOCK, CRIMPER SPACER			
3	CRIMPER, INSULATION O			
2	SPACER, CRIMPER			
1	CRIMPER, WIRE PREMIUM			

REV	DESCRIPTION	DATE	BY	APPV
84				
83				
82				
81				
80				
79				
78				
77				
76				
75				
74				

REV	DESCRIPTION	DATE	BY	APPV
77				
76				
72				
71				
6				
2				
-1				