

2

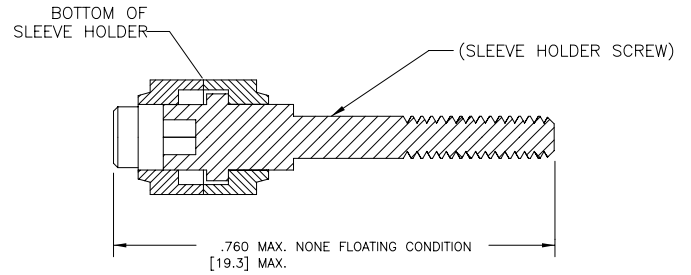
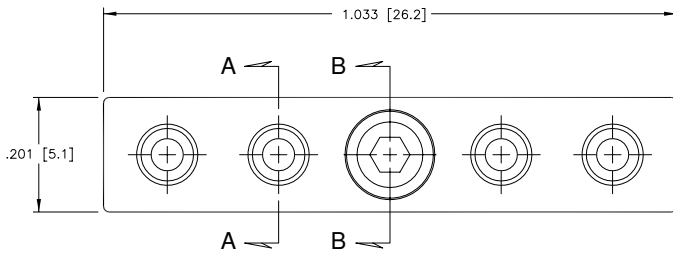


1

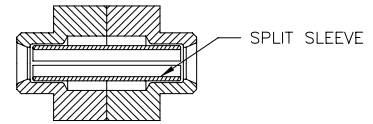
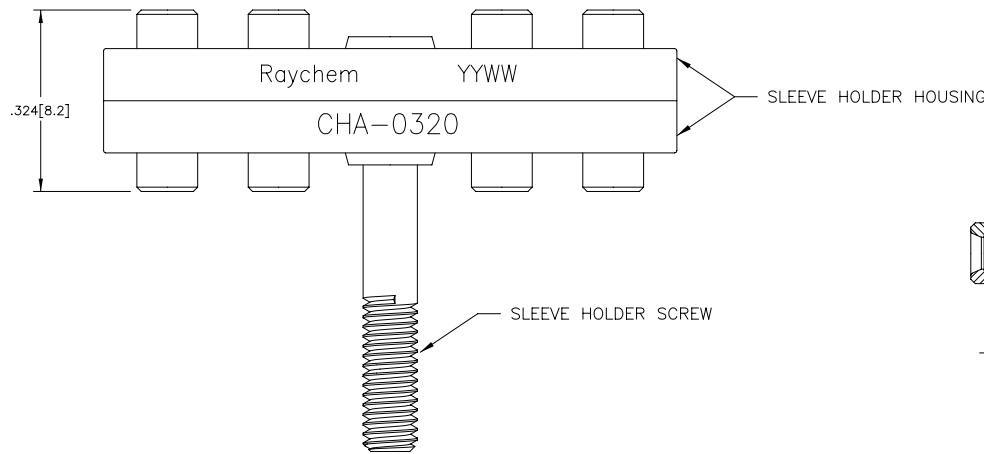
TYCO ELECTRONICS RESERVES THE RIGHT TO AMEND THIS DRAWING AT ANY TIME. USERS SHOULD EVALUATE THE SUITABILITY OF THE PRODUCT FOR THEIR APPLICATION.

REVISIONS

LTR	DESCRIPTION	DATE	APPROVED
A	INITIAL RELEASE PER DCR# C070003	Jan/15/07	M.HIGGY



SECTION B-B



SECTION A-A

NOTES:

1. MATERIALS:

- SLEEVE HOLDER HOUSING: ALUMINUM ALLOY 6061-T651
- SLEEVE HOLDER SCREW: CORROSION RESISTANCE STEEL, PER SAE-AMS 5737 A286, OR AMS 5640 A320
- SPLIT SLEEVE: YTTRIA (3 mol % average) -PARTIALLY STABILIZED ZIRCONIA

2. FINISH:

- SLEEVE HOLDER HOUSING: ANODIZED PER MIL-A-8625, TYPE II, CLASS II. COLOR: GOLD
- SLEEVE HOLDER SCREW: PASSIVATED PER SAE-AMS 2700, (TYPE II, METHOD I FOR A286), OR (TYPE 6, CLASS I FOR A320)

SPECIFICATION CONTROL DRAWING

If this document is printed it becomes uncontrolled. Check for the latest revision

© 2007 Tyco Electronics Corporation. All rights reserved.

UNLESS OTHERWISE SPECIFIED DIMENSIONS ARE IN INCHES. METRIC DIMENSIONS ARE IN BRACKETS.

DECIMALS
 .XXX ± 0.005 [0.13 mm]
 .XX ± 0.01 [0.25 mm]
 .X ± 0.1 [0.50 mm]

ANGLES
 .X ± 0.5 DEG

DRAWN	ZSOFIA.ORBAN	Jan/9/07
CHECKED		
APPROVED	M.HIGGY	Jan/9/07
REVISED		
CAD NAME: C070003.DWG		

	Tyco Electronics Corporation 300 Constitution Drive Menlo Park, CA. 94025 U.S.A.	
	TITLE SLEEVE HOLDER ASSEMBLY SOCKET INSERT, 4 CAVITIES, 1-INCH MTCT-SERIES	

THIRD ANGLE PROJECTION		SIZE A	CODE IDENT. NO. 06090	DWG. NO. CHA-0320	REV: A
DO NOT SCALE THIS DRAWING				SHEET 1 OF 1	

2



1