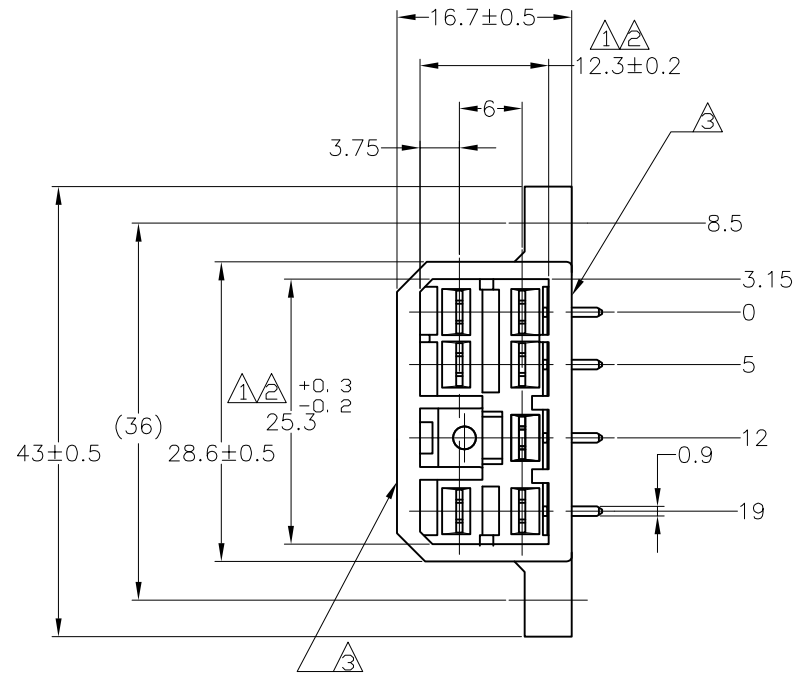
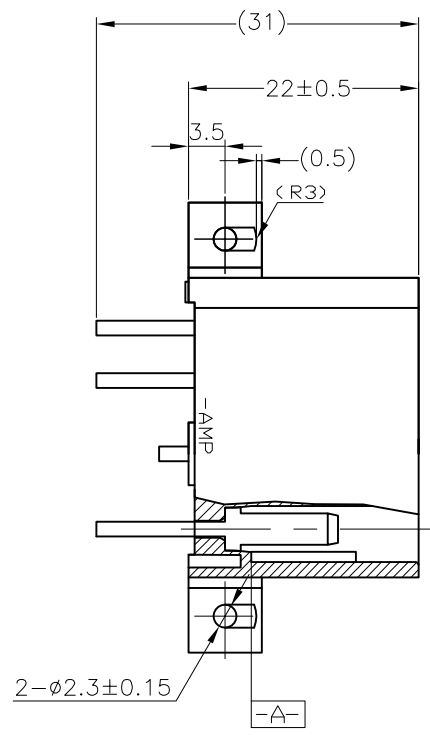


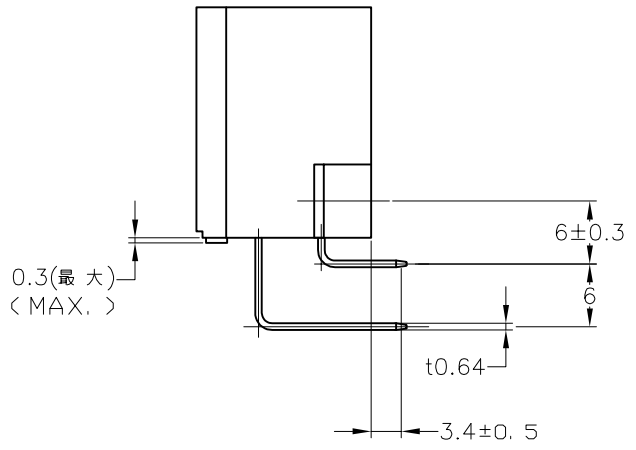
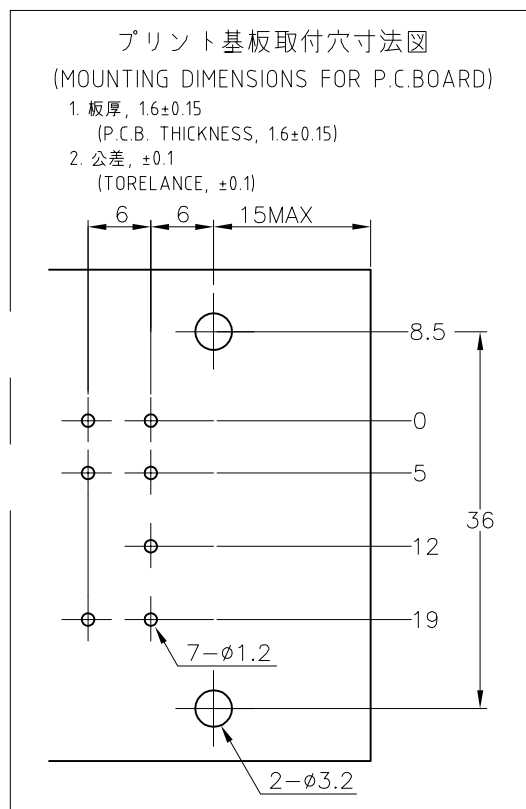
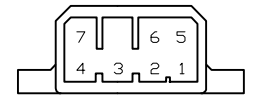
THIS DRAWING IS UNPUBLISHED. RELEASED FOR PUBLICATION
 © COPYRIGHT - By - ALL RIGHTS RESERVED.

LOC		DIST		REVISIONS			
J		-		REVISED	DATE	DWN	APVD
				E6	31AUG07	TS	KB



- 注記:
- △-A- 面より2mmの範囲で測定のこと。
 - △ 相手ハウジングと所定の機能を満たしてかん合できること。
 - △ フードの反りは0.2以内。
 - 4 推奨取付けねじ: JIS B 1115 又は、1122 タッピンねじ
なべ1種又は2種、呼び径3長さ6mm以下。
(締め付けトルク: 0.4N・m 以下)
 - 5 適用製品規格 No.108-5093
 - 6 相手ハウジングとのかん合力は、29.4N以下
但し、リセプタクルコンタクトは含まない。
 - △ タブなしタイプ(表参照)回路番号下図参照のこと。

- NOTES:
- △ TO BE MEASURED WITHIN 2mm FROM -A-
 - △ IN COUPLING WITH THE PLUG HOUSING MATING SATISFIES FUNCTION
 - △ WARPAGE 0.2 MAX.
 - 4 RECOMMENDED MOUNTING SCREW; 3mmDIA, 6mmLENGTH<MAX.> PAN HEAD, CLASS 1 AND 2 TAPPING SCREW SPECIFIED IN JIS B1115, B1122 <TIGHTENING TORQUE 0.4N・m MAX.>
 - 5 SPEC. No. 108-5093
 - 6 IN COUPLING WITH THE PLUG HOUSING MATING FORCE 29.4N MAX WITHOUT RECEPTACLE CONTACT
 - △ NON TAB CONTACT'S TYPE <SEE TABLE>
 - CIRCUIT NUMBER



		SELECTIVE-TIN (MATTE)	SELECTIVE GOLD (0.38μm MIN.)	NATURAL	2-5172039-1
		SELECTIVE-TIN (MATTE)	SELECTIVE GOLD (0.76μm MIN.)	NATURAL	1-5172039-1
OBSOLETE	12.6		PRE-TIN	NATURAL	4-172039-1
OBSOLETE	2.6		PRE-TIN	NATURAL	3-172039-1
OBSOLETE		TIN-LEAD	SELECTIVE GOLD (0.38μm MIN.)	GREEN	2-172039-4
OBSOLETE		TIN-LEAD	SELECTIVE GOLD (0.38μm MIN.)	NATURAL	2-172039-1
OBSOLETE		TIN-LEAD	SELECTIVE GOLD (0.76μm MIN.)	GREEN	1-172039-4
OBSOLETE		TIN-LEAD	SELECTIVE GOLD (0.76μm MIN.)	NATURAL	1-172039-1
OBSOLETE			PRE-TIN	YELLOW	172039-7
OBSOLETE			PRE-TIN	GRAY	172039-6
OBSOLETE			PRE-TIN	BLUE	172039-5
			PRE-TIN	GREEN	172039-4
OBSOLETE			PRE-TIN	BROWN	172039-3
			PRE-TIN	BLACK	172039-2
			PRE-TIN	NATURAL	172039-1
△ NON TAB PLACES タブなし箇所		SOLDERING SIDE 半田付け部	CONTACT SIDE 接触部側	COLOR 色	PART NUMBER 製品型番
		CONTACT FINISH コンタクト仕上			

TOLERANCE UNLESS OTHERWISE SPECIFIED: 一般公差

0 ≤ x ≤ 10	±0.2
10 ≤ x ≤ 30	±0.25
30 ≤ x ≤ 100	±0.3
ANGLE 角度	±3°

THIS DRAWING IS A CONTROLLED DOCUMENT.

DIMENSIONS: 単位: 耗 mm

TOLERANCES UNLESS OTHERWISE SPECIFIED: 一般公差

0 PLC ±
1 PLC ±
2 PLC ±
3 PLC ±
4 PLC ±

ANGLES 仕上 ±

MATERIAL 材料 HSG: 66 NYLON CONTACT: BRASS

FINISH 仕上 SEE TABLE

THIS DRAWING IS A CONTROLLED DOCUMENT. DWN T.SHINOHARA 31AUG07 CHK K.BETSUI 31AUG07 APVD K.BETSUI 31AUG07

PRODUCT SPEC 製品規格 SEE NOTE 5

APPLICATION SPEC 取付適用規格

SIZE A2 CAGE CODE 00779 DRAWING NO. 番号 172039

CUSTOMER DRAWING SCALE 2:1 SHEET 1 OF 1 REV E6

RESTRICTED TO