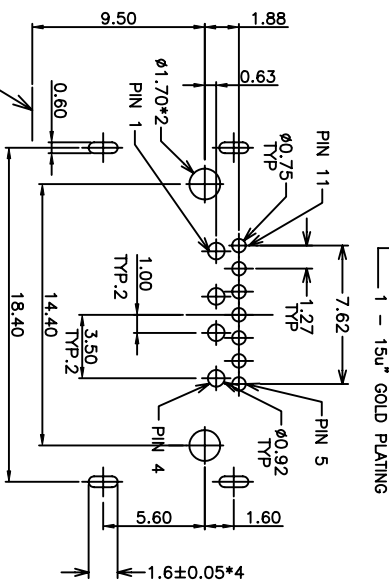


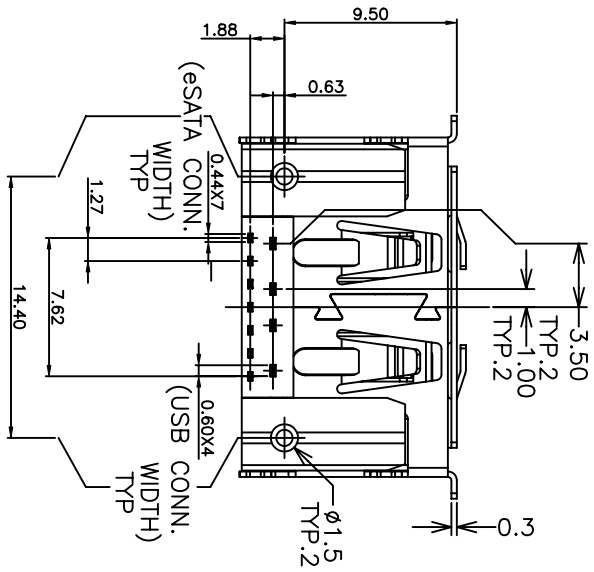
(FRONT EDGE OF CONNECTOR)

RECOMMEND P.C.B. BOARD LAYOUT
PCB TOLERANCE: ±0.05



1 - 15u" GOLD PLATING
LEAD FREE
R : TAPE & REEL PACKING

- NOTES:
1. MATERIAL:
HOUSING: HIGH TEMP THERMAL PLASTIC WITH 30% G/F U194 V-0
COLOR: BLACK
ESATA CONTACT: COPPER ALLOY, T=0.20mm
USB CONTACT: COPPER ALLOY, T=0.25mm
SHELL: COPPER ALLOY, T=0.30mm
2. FINISH:
CONTACT: GOLD PLATING ON CONTACT AREA
100u" MIN. MAT TIN PLATING ON SOLDER TAILS
50u" MIN. NICKEL UNDERPLATING OVER ALL
SHELL: 50u" MIN. NICKEL UNDERPLATING OVER ALL
3. THE HOUSING WILL WITHSTAND EXPOSURE TO 260 C TEMP. FOR 10 SECOND IN A WAVE SOLDER APPLICATION WITH A 1.6MM MIN. THICK CIRCUIT BOARD.
4. PRODUCT GS-12-402
PACKING SPEC: GS-14-1099
5. NUMBERING INFORMATION
10074703 - 0 0 X X LF
LEAD FREE
R : TAPE & REEL PACKING



1 | 2

mot'l. code		tolerances unless otherwise specified		CUSTOMER COPY		FCI	
lir	ecn no	dr	dtte	lineor	projection	title	www.fciconnect.com
A	108-1064	S.Lin	04/09/08	.XX ± 0.38 .XXX ± 0.25 0 ± 0.15	MM	E SATA + USB 2 IN 1 STD TYPE R/A, DIP	
				angles	scale	product family	code
				dr	MM	SATA	TWN
				engr	size	10074703	sheet
				chr	dwg no		1 of 1
				pppd	code		
				MINERVA WANG	sheet		
sheet index	revision	sheet	A	1	1		

ACAD

3 |

cage code

4

3 |

4