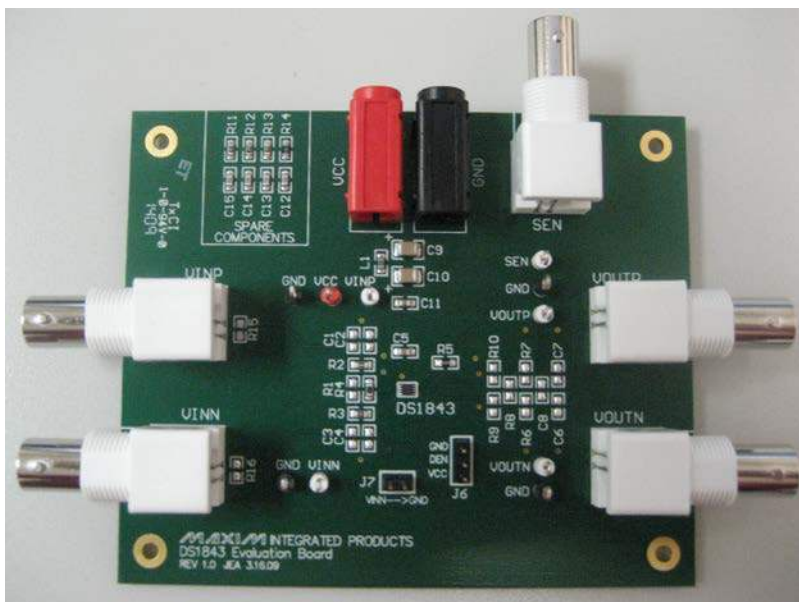


DS1843 Evaluation Kit User Guide

UG6224; Rev 0; 10/15

Below are instructions for connecting and powering the DS1843 evaluation kit. See the schematic at the end of this document for more information.

1. Connect GND, then V_{CC} to a power supply. V_{CC} should be between 3.0V and 5.5V. V_{CC} is filtered on the EV kit using a 600 Ω ferrite bead.
2. Jumper J6 is provided to switch DEN (differential output enable) between V_{CC} and GND to select single-ended or differential output. If DEN is connected to GND, then single-ended output is enabled. Jumper DEN to V_{CC} for differential output.
3. A BNC jack is provided for the SEN (sample enable) input. A 50 Ω termination to ground (R5) is included on the EV kit board. Apply a pulse of 300ns or greater to this input. Ensure that the pulse generator is set up with a 50 Ω series resistance.
4. Inputs V_{INP} and V_{INN} are connected to BNC jacks. Several footprints have been provided so the loading applied to the inputs can be changed. This EV kit is shipped configured for a current-source input with a 1.6k Ω resistor between V_{INP} and V_{INN} . V_{INN} can be connected to GND using the jumper J7 " $V_{INN} \rightarrow GND$."
5. The outputs V_{OUTP} and V_{OUTN} are also connected to BNC jacks. Again, several footprints have been included to add loading to these outputs. This kit is shipped with no loading applied to the two output pins.
6. All optional components use 0805 footprints. The *Spare Components* section of the board contains some optional components that can be used to load either the inputs or the outputs of the DS1843.



©2015 by Maxim Integrated Products, Inc. All rights reserved. Information in this publication concerning the devices, applications, or technology described is intended to suggest possible uses and may be superseded. MAXIM INTEGRATED PRODUCTS, INC. DOES NOT ASSUME LIABILITY FOR OR PROVIDE A REPRESENTATION OF ACCURACY OF THE INFORMATION, DEVICES, OR TECHNOLOGY DESCRIBED IN THIS DOCUMENT. MAXIM ALSO DOES NOT ASSUME LIABILITY FOR INTELLECTUAL PROPERTY INFRINGEMENT RELATED IN ANY MANNER TO USE OF INFORMATION, DEVICES, OR TECHNOLOGY DESCRIBED HEREIN OR OTHERWISE. The information contained within this document has been verified according to the general principles of electrical and mechanical engineering or registered trademarks of Maxim Integrated Products, Inc. All other product or service names are the property of their respective owners.