

PART NUMBER	REV	FIRST USED	TERMINATOR	FEED TYPE	DESCRIPTION
1529069-1	B		- BENCH & LEADMAKER	MECH POST FEED	HD-I APPLICATOR
7-1529069-1	B		- BENCH & LEADMAKER	MECH POST FEED	-1 AND SPARE PARTS
7-1529069-7	A		-	-	SPARE PARTS KIT

### CRIMP DATA AMP TERMINAL AMP CRIMP SPECS

TERMINAL NAME: PRONER COMATEL 8MM CLIP WITH LOCKING LANCE.

CRIMP	SIZE	TYPE	RANGE
WIRE	4.06 [1.160 IN]	F	3.0mm <sup>2</sup> - 6.0mm <sup>2</sup>
INSUL	5.33 [1.210 IN]	OV	2.80-5.16 [1.110-.203 IN]

WIRE STRIP LENGTH	APPL INSTRUCTION
6.00-6.80 [1.236-.268 IN]	408-8323 & 408-8490

TERMINAL DRG.	FEED
0944 C 002	29.00 [1.142 IN]
APPL SPEC CUST DRG. 1544129	

### TERMINALS APPLIED

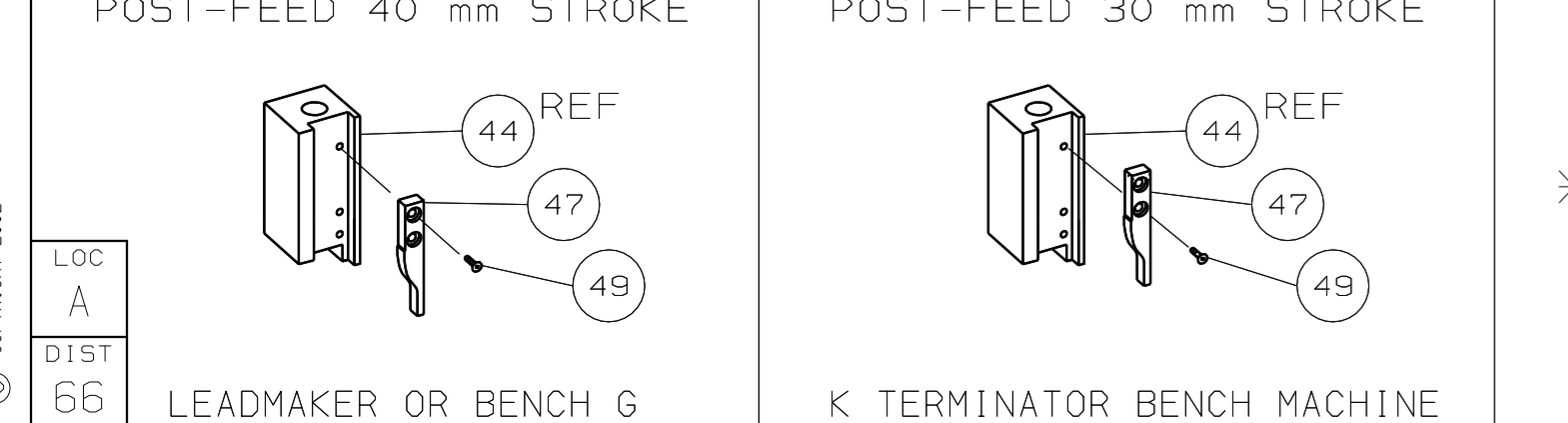
1544129	-	-	-	-
-	-	-	-	-
-	-	-	-	-
-	-	-	-	-
-	-	-	-	-
-	-	-	-	-
-	-	-	-	-
-	-	-	-	-
-	-	-	-	-
-	-	-	-	-
-	-	-	-	-
-	-	-	-	-
-	-	-	-	-
-	-	-	-	-
-	-	-	-	-
-	-	-	-	-
-	-	-	-	-
-	-	-	-	-
-	-	-	-	-
-	-	-	-	-
-	-	-	-	-

WIRE SIZE mm <sup>2</sup> AWG	CRIMP HEIGHT	REF SETTING
6.0mm <sup>2</sup>	3.17 ±0.05 [1.125 ±0.002 IN]	A 8
5.0mm <sup>2</sup>	3.00 ±0.05 [1.118 ±0.002 IN]	B 8
4.0mm <sup>2</sup>	2.72 ±0.05 [1.107 ±0.002 IN]	D 6
3.0mm <sup>2</sup>	2.55 ±0.05 [1.100 ±0.002 IN]	E 8

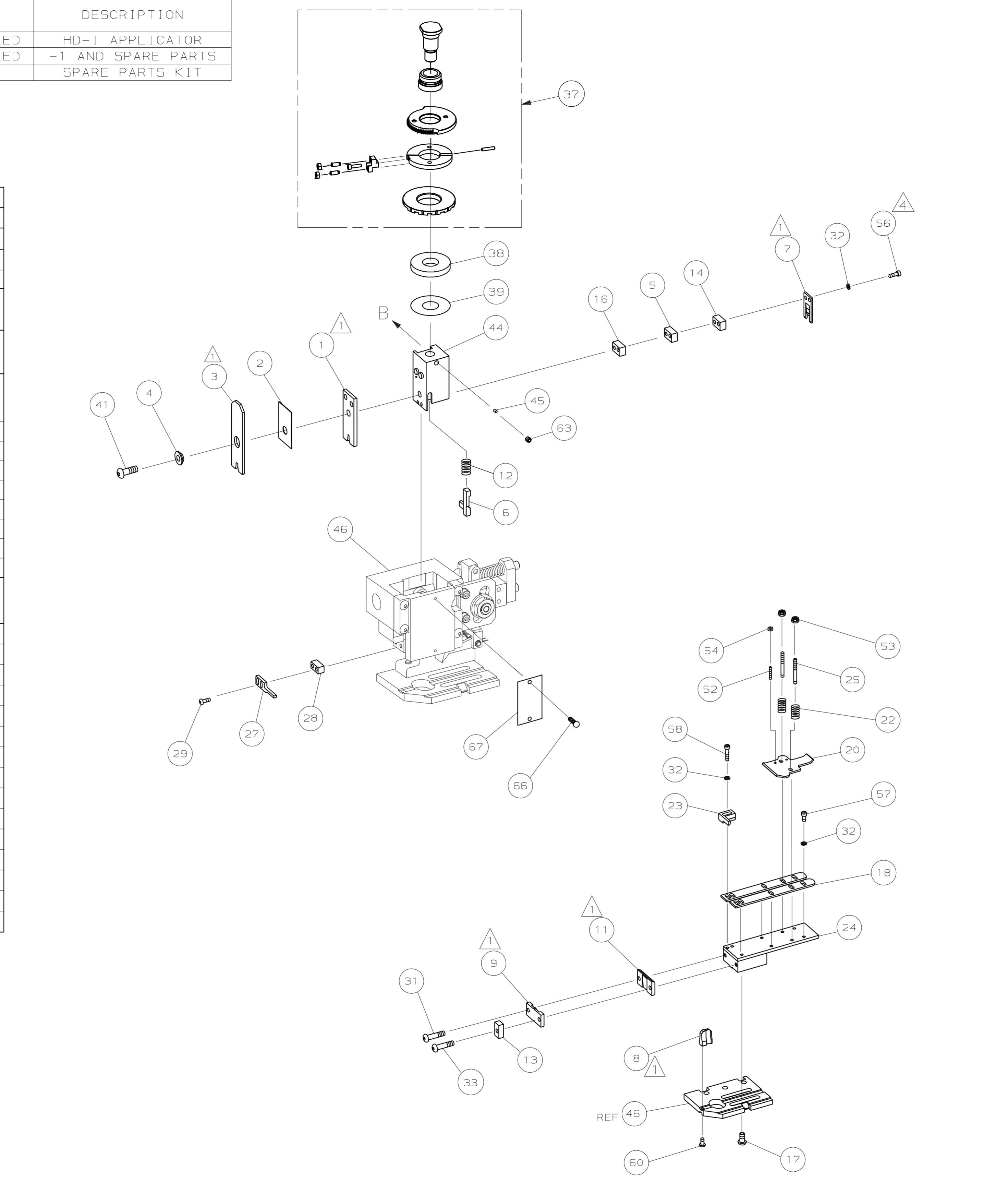
-	-	-	-	-
-	-	-	-	-
-	-	-	-	-
-	-	-	-	-
-	-	-	-	-
-	-	-	-	-
-	-	-	-	-
-	-	-	-	-
-	-	-	-	-
-	-	-	-	-
-	-	-	-	-
-	-	-	-	-
-	-	-	-	-
-	-	-	-	-
-	-	-	-	-
-	-	-	-	-
-	-	-	-	-
-	-	-	-	-
-	-	-	-	-
-	-	-	-	-
-	-	-	-	-

- ▲ RECOMMENDED SPARE PARTS.
- 2. GREASE RAM, CAM, CAM FOLLOWER AND FEED ROD LIGHTLY.
- 3. LUBRICATE DAILY PER THE APPLICATOR INSTRUCTION SHEET SUPPLIED WITH THE APPLICATOR.
- ▲ CUT TO LENGTH AT ASSY.

### VIEW B ROTATED 180°



LOC A  
DIST 66 LEADMAKER OR BENCH G K TERMINATOR BENCH MACHINE



\* WARNING:  
ON INSTALLATION, SET WIRE DISC TO LARGEST WIRE SIZE SETTING.  
USE OF SETTINGS BELOW MIN REQ'D CRIMP HEIGHT SETTING WILL  
CAUSE DAMAGE TO CRIMP TOOLING.

QTY	REQD	PER	ASSY	PART NO	DESCRIPTION	ITEM
-	1	1		1529069	PRINT, APPLICATOR LOG SHEET	73
-	1	1		1338705-4	DOCUMENTATION PACKAGE	72
						70
						68
-	1	1		461264-5	PLATE, IDENTIFICATION	67
-	2	2		21017-2	SCR,DRIVE (#2X.19) ID PLATE	66
						65
						64
-	1	1		3-18031-0	SCR,SKT SET (M6X6) RAM	63
						62
						61
-	1	1		18024-7	SCR,BHC (M4X10) ANVIL	60
						59
-	2	2		1-18023-4	SCR,SHC (M4X20) HOLD DOWN	58
-	5	5		1-18023-0	SCR,SHC (M4X8) STRIP GUIDE	57
-	2	2		1-18023-4	SCR,SHC (M4X20) SLUG BLADE	56
						55
-	2	2		18029-1	NUT, HEX (M3) DRAG	54
-	2	2		986965-1	NUT, HEX SL (M4) DRAG STUD	53
-	2	2		2-18032-2	SCR,SKT SET (M3X10) DRAG	52
						51
						50
-	1	1		18024-3	SCR,BHC (M3X10) CAM	49
						48
-	1	1		1338676-1	CAM, POST-FEED 30 & 40 mm ST	47
-	1	1		1338662-2	APPLICATOR, BASIC (SUBASSY)	46
-	1	1		690191-1	PLUG, NYLON	45
-	1	1		1320998-1	RAM	44
						43
						42
-	1	1		992285-2	SCR,SHC LOW HD (M8X25) CRIMPER	41
						40
-	1	1		690125-1	SHIM SUBASSY	39
-	1	1		469367-2	SPACER, FINE ADJUST	38
-	1	1		879103-2	FINE ADJUST HEAD SUBASSY	37
						36
						35
						34
-	1	1		4-18024-7	SCR,BHC (M4X25) SHEAR PL	33
-	9	9		18025-2	WASHER, LOCK (M4) SHEAR BL	32
-	1	1		1-18024-0	SCR,BHC (M4X20) SHEAR PL	31
						30
-	2	2		18024-8	SCR,BHC (M4X12) STRIPPER	29
-	1	1		3-690451-2	SPACER, STRIPPER	28
-	1	1		690455-7	STRIPPER	27
						26
-	2	2		1320906-1	DRAG, STUD	25
-	1	1		1-1320995-8	STRIP GUIDE	24
-	1	1		240825-5	PLATE, STRIP HOLD DOWN	23
-	2	2		4-22281-1	SPRING, DRAG	22
						21
-	1	1		1338665-1	DRAG, STOCK	20
						19
-	2	2		1338663-8	GUIDE, LOWER STRIP	18
-	4	4		1-18024-8	SCR,BHC (M6X12) STRIP GD PL	17
-	1	1		1338708-1	SPACER, SLUG BLADE	16
						15
-	1	1		4-240641-0	SPACER, SLUG BLADE	14
-	1	1		1-690481-0	SPACER, HOLD DOWN	13
-	1	1		23846-1	SPRING, HOLD DOWN	12
▲	-	1		240833-6	PLATE, REAR SHEAR	11
						10
▲	-	1		2-690495-2	PLATE, FRONT SHEAR	9
▲	1	2		1-1333223-2	ANVIL	8
▲	-	1		690474-4	BLADE, SLUG	7
▲	-	1		6-455892-9	HOLD DOWN, TERMINAL	6
-	1	1		7-240641-5	SPACER, SLUG BLADE	5
-	1	1		238009-5	SPACER, BLOCK CRIMPER	4
▲	1	2		3-854830-9	CRIMPER, INSULATION	3
▲	-	1		455888-8	SPACER, CRIMPER	2
▲	1	2		1-456414-0	CRIMPER, WIRE	1
-	-	-		-77-71	-1	

DIMENSIONS: mm [INCHES]		MATL	HT TR	FIN
DO NOT SCALE PRINT.				
TOLERANCES UNLESS OTHERWISE SPECIFIED:				
1	PLC DEC ±			
2	PLC DEC ±			
3	PLC DEC ±			
ANGLES ±				
SURF TEXTURE: <input checked="" type="checkbox"/>				
REMOVE BURRS, BREAK SHARP EDGES RO.38 MAX				

DR	04NOV05	APP	04NOV05	M. CLIFFORD	AMP Incorporated Harrisburg, PA 17105-3608
L.L.OFTHOUSE		REL	04NOV04	L.L.OFTHOUSE	
NAME	FINE ADJ END FD HD-I APPL				MACHINE REF
SCALE	DWG NO 1529069				HD-I APPL
SHEET	1 OF 1				REV B

ECR-06-007852	RK	APROG	DATE
REVISION RECORD	APP		

CAGE CODE 00779 CUSTOMER AND ASSEMBLY DRAWING

THIS DRAWING IS A CONTROLLED DOCUMENT.

LAYOUT L1529035 SET UP GAGE 458638-3

2002 . . . . . RELEASED FOR PUBLICATION . . . . . BY AMP INCORPORATED. ALL RIGHTS RESERVED.