

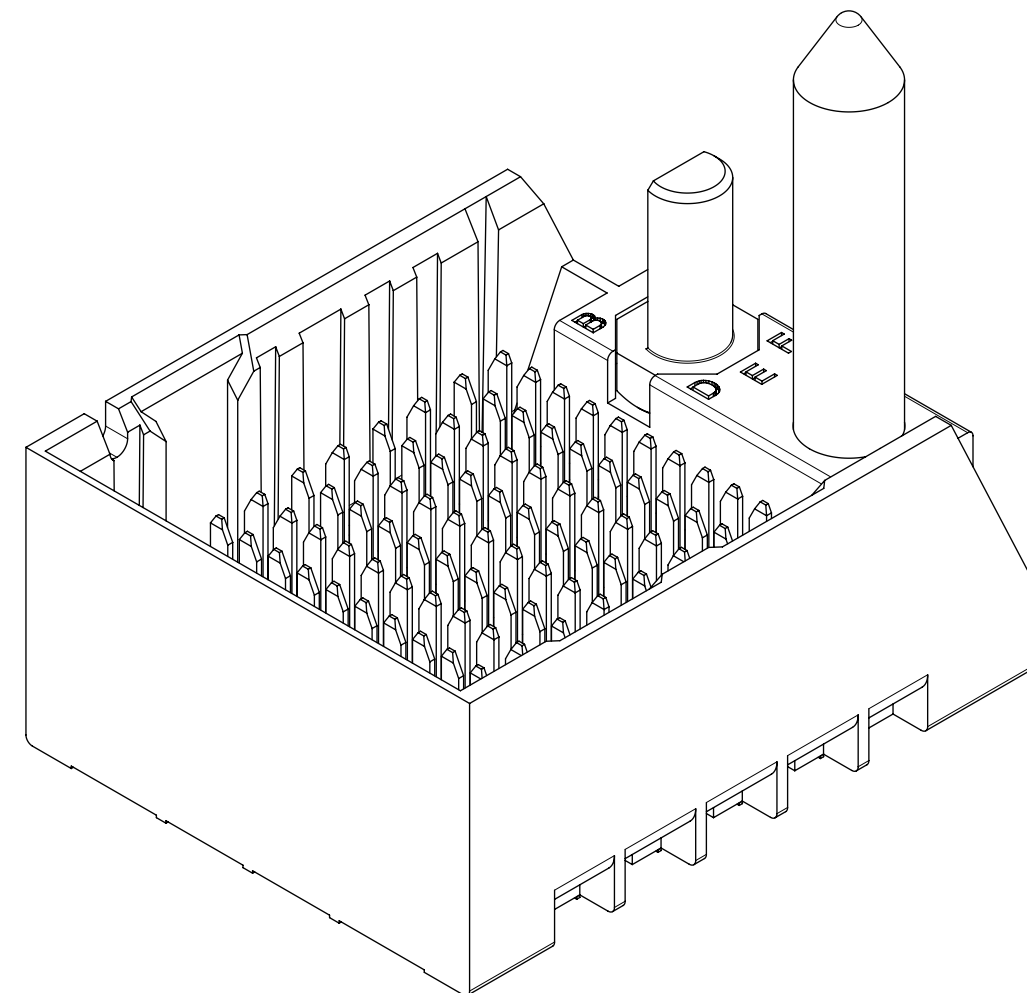
- NOTES:
1. MATERIALS: HOUSING - LIQUID CRYSTAL POLYMER (LCP) GLASS-FILLED, UL94V-0
TERMINALS - HIGH PERFORMANCE COPPER ALLOY
 2. FINISH: 30µ INCH MIN GOLD IN CONTACT AREA.
SELECTIVE MATTE TIN ON PCB TAILS, NICKEL OVERALL.
 3. REFER TO MOLEX PRODUCT SPECIFICATION PS-170540-999 FOR PERFORMANCE SPECIFICATIONS AND ADDITIONAL PCB INFORMATION.
 4. REFER TO MOLEX PCB ROUTING GUIDE AS-76060-990 FOR ANTIPAD AND ROUTING RECOMMENDATIONS.
 5. CONNECTORS SUPPLIED WITH A 2-56 UNC-2A SCREW.
 6. "THESE DIMENSIONS REPRESENT THE AREA NEEDED TO ACCOMMODATE CONNECTOR INSERTION AND REPAIR ON THE PC BOARD. THIS IS REFERRED TO AS THE "CONNECTOR KEEP OUT ZONE" AND DOES NOT REPRESENT THE ACTUAL PERIMETER OF THE CONNECTOR. WHEN LAYING OUT THE PC BOARD FOR CONNECTORS STACKED TOGETHER, USE A 1.9mm PROGRESSION."
 7. THIS PART CONFORMS TO MOLEX COSMETIC SPEC PS-45499-002 CLASS B.
 8. PARTS PACKAGED PER PK-70873-757.
 9. SEE SHEETS 2 & 3 FOR PART NUMBERS AND BOARD RELATIONSHIPS.
 10. FOR GROUNDED GUIDE PINS USE Ø 3.56 +/-0.08 (PTH), Ø 3.66 (DRILL) & Ø 6.5 (PAD).
 11. KEEP OUT ZONE FOR BP HOUSING LENGTH INCLUDES AN ADDITIONAL 1.0MM TO ACCOMMODATE FOR SPACE REQUIRED BY DC FRONT HOUSING.
 12. MINIMUM CIRCUIT BOARD THICKNESS: 1.0mm

| | | | |
|----------------------------------|--|---|--------------|
| SYMBOLS | | THIS DRAWING CONTAINS INFORMATION THAT IS PROPRIETARY TO MOLEX ELECTRONIC TECHNOLOGIES, LLC AND SHOULD NOT BE USED WITHOUT WRITTEN PERMISSION | |
| ▽ = 0 | mm | SCALE | 4:1 |
| ▽ = 0 | GENERAL TOLERANCES (UNLESS SPECIFIED) | | |
| ▽ = 0 | ANGULAR TOL | ± | 0.5° |
| ▽ = 0 | 4 PLACES | ± | |
| ▽ = 0 | 3 PLACES | ± | |
| ▽ = 0 | 2 PLACES | ± | 0.13 |
| ▽ = 0 | 1 PLACE | ± | 0.25 |
| ▽ = 0 | 0 PLACES | ± | |
| ▽ = 0 | DRAFT WHERE APPLICABLE MUST REMAIN WITHIN DIMENSIONS | | |
| CURRENT REV DESC: MIGRATED TO NX | | EC NO: 172491 | |
| | | DRWN: VK10 2018/02/19 | |
| | | CHK'D: DVARVARA 2018/02/20 | |
| | | APPR: TELO 2018/02/22 | |
| | | INITIAL REVISION: | |
| | | DRWN: JBINGHAM 2012/11/13 | |
| | | APPR: JLAURX 2012/11/16 | |
| THIRD ANGLE PROJECTION | | DRAWING | SERIES |
| C-SIZE | | 170335 | |
| DOCUMENT NUMBER | | DOC TYPE | DOC PART |
| SD-170335-0003 | | PSD | 001 |
| MATERIAL NUMBER | | CUSTOMER | SHEET NUMBER |
| SEE CHART | | GENERAL MARKET | 1 OF 3 |

| | | | | |
|-----------------|----|--------------|------------|----------|
| DOCUMENT STATUS | P1 | RELEASE DATE | 2018/02/22 | 16:21:50 |
|-----------------|----|--------------|------------|----------|

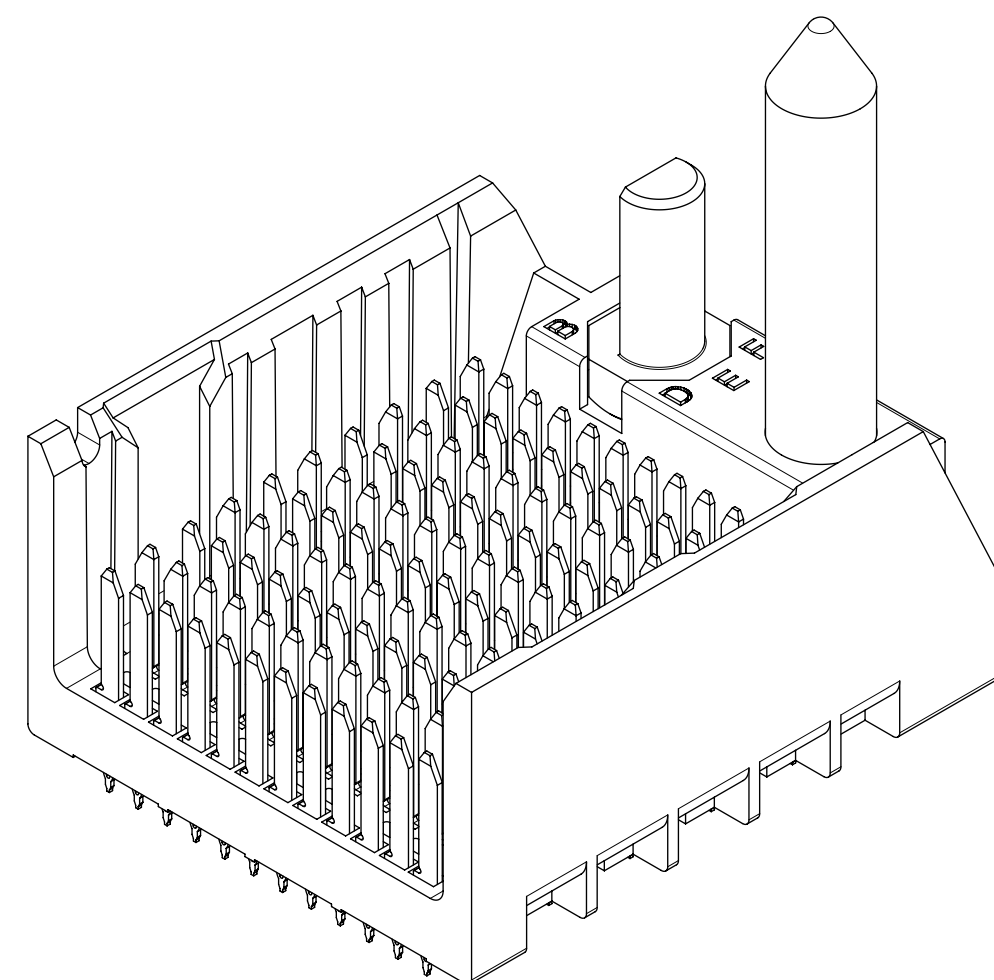
PART NUMBER CHART

| MATERIAL NUMBER | # OF COLUMNS | # OF DIFF PAIR | DIM "A" | DIM "B" | GUIDE RIGHT END WALL OPTION |
|-----------------|--------------|----------------|---------|---------|-----------------------------------|
| 170335-93** | 6 | 24 | 19.3 | 9.50 | |
| 170335-98** | 8 | 32 | 23.1 | 13.30 | |
| 170335-91** | 10 | 40 | 26.9 | 17.10 | |
| 170335-92** | 12 | 48 | 30.7 | 20.90 | |
| 170335-94** | 14 | 56 | 34.5 | 24.70 | |
| 170335-96** | 16 | 64 | 38.3 | 28.50 | |



GUIDE RIGHT
END WALL
OPTION

| MATERIAL NUMBER | # OF COLUMNS | # OF DIFF PAIR | DIM "A" | DIM "B" | GUIDE RIGHT OPEN WALL OPTION |
|-----------------|--------------|----------------|---------|---------|------------------------------------|
| 170335-53** | 6 | 24 | 17.9 | 9.50 | |
| 170335-58** | 8 | 32 | 21.7 | 13.30 | |
| 170335-51** | 10 | 40 | 25.5 | 17.10 | |
| 170335-52** | 12 | 48 | 29.3 | 20.90 | |
| 170335-54** | 14 | 56 | 33.1 | 24.70 | |
| 170335-56** | 16 | 64 | 36.9 | 28.50 | |



GUIDE RIGHT
OPEN WALL
OPTION

PART NUMBER LOGIC 170335-****

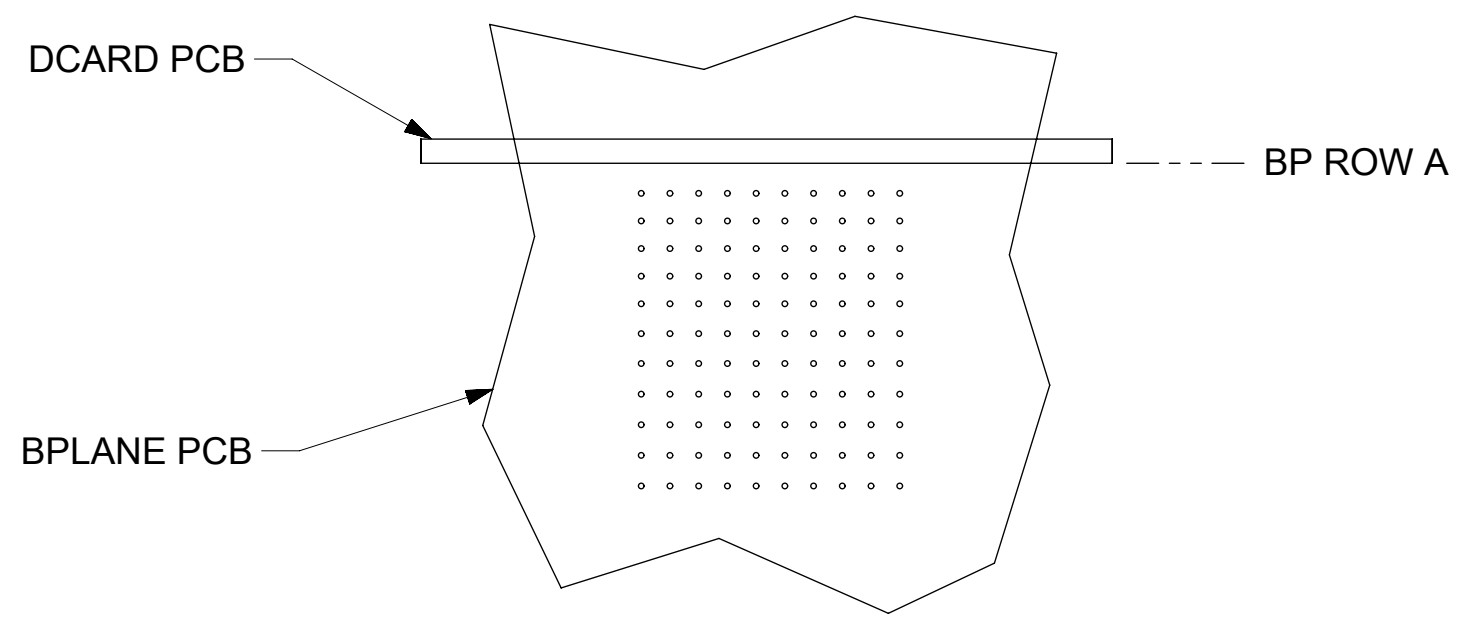
MODULE TYPE
5 = GUIDE RIGHT, MATTE TIN
9 = GUIDE RIGHT END WALL, METTA TIN

OF COLUMNS
1 = 10 COL
2 = 12 COL
3 = 6 COL
4 = 14 COL
6 = 16 COL
8 = 8 COL

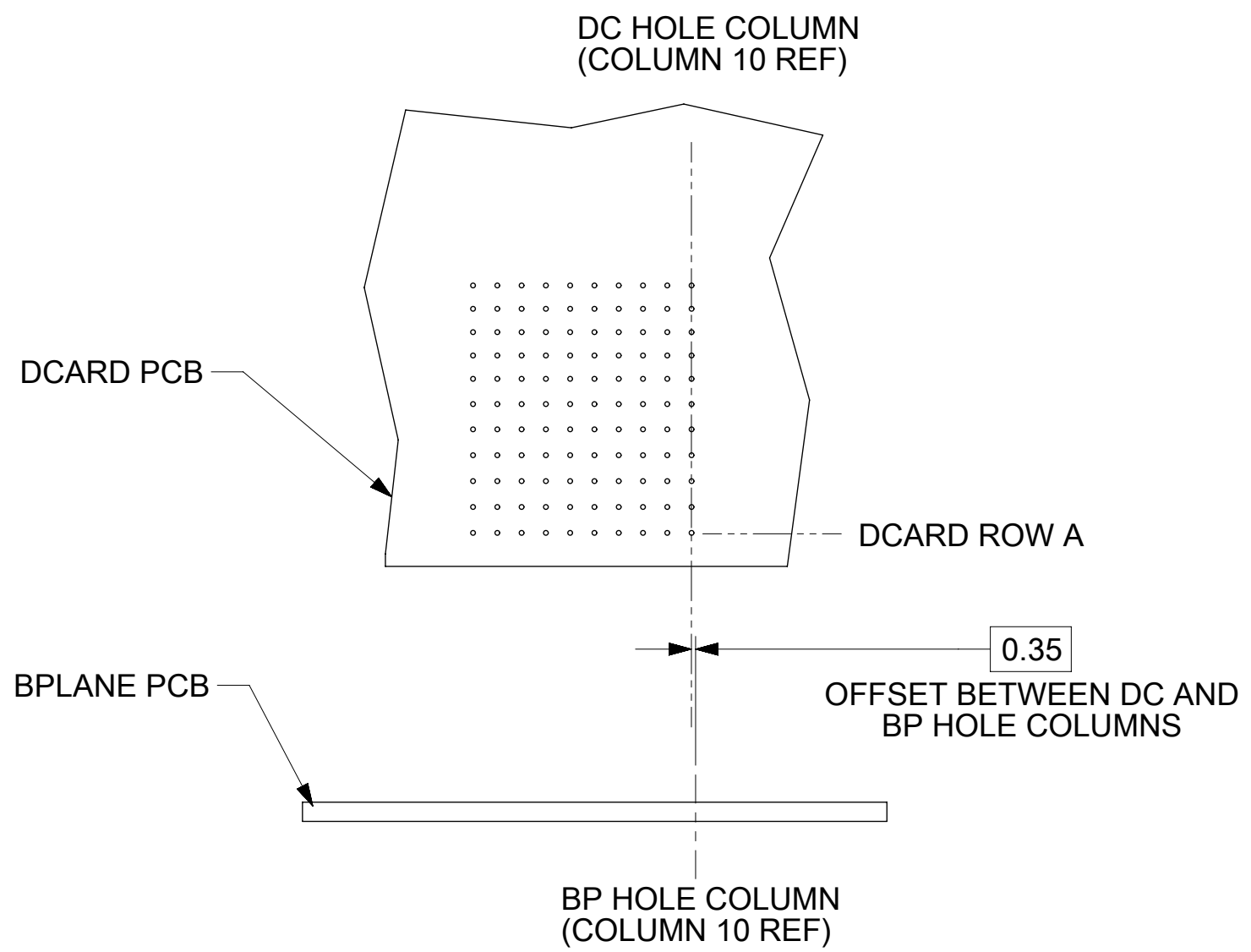
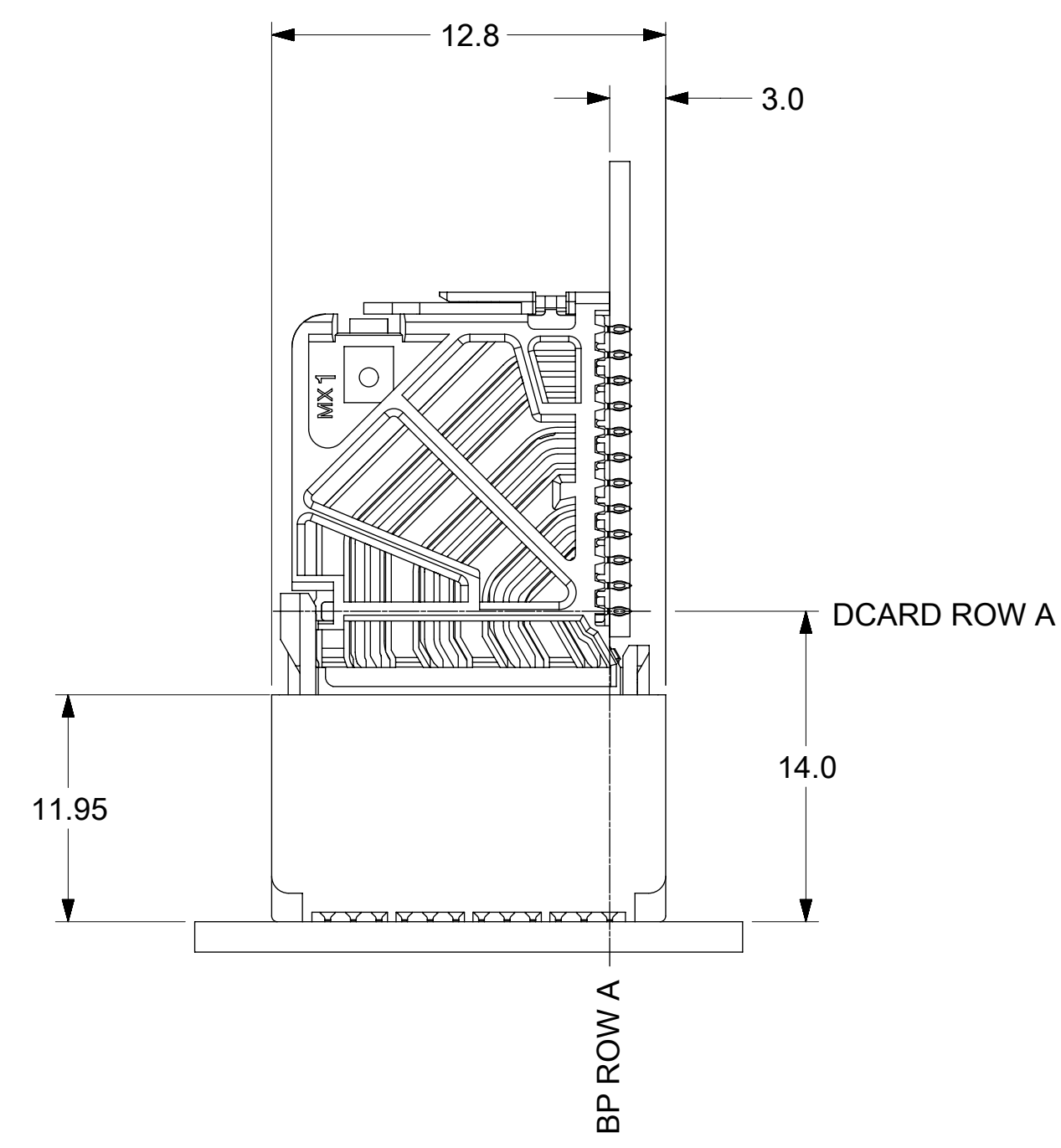
PIN LENGTH (P)
3 = 4.50 (SHORT COMPLIANT, 0.46±0.05 PTH)
4 = 4.90 (SHORT COMPLIANT, 0.46±0.05 PTH)
5 = 5.50 (SHORT COMPLIANT, 0.46±0.05 PTH)
6 = 4.50 (MICRO COMPLIANT, 0.39±0.05 PTH)
7 = 4.90 (MICRO COMPLIANT, 0.39±0.05 PTH)
8 = 5.50 (MICRO COMPLIANT, 0.39±0.05 PTH)

KEY ORIENTATION
0 = NO KEY
1 = A
2 = B
3 = C
4 = D
5 = E
6 = F
7 = G
8 = H

| THIS DRAWING CONTAINS INFORMATION THAT IS PROPRIETARY TO MOLEX ELECTRONIC TECHNOLOGIES, LLC AND SHOULD NOT BE USED WITHOUT WRITTEN PERMISSION | | | | | | | | | |
|---|--|-----------------|--|----------------------------------|-------------------|--|-----------------|--|--------------------------------|
| SYMBOLS | | DIMENSION UNITS | SCALE | CURRENT REV DESC: MIGRATED TO NX | | | | | |
| ▽ = 0 | mm | 4:1 | molex IMPACT 4-PAIR 85-OHM RIGHT GUIDED BACKPLANE SALES ASSEMBLY DRAWING PRODUCT CUSTOMER DRAWING | | | | | | |
| ▽ = 0 | GENERAL TOLERANCES (UNLESS SPECIFIED) | | | | | | | | |
| ▽ = 0 | ANGULAR TOL ± 0.5° | | EC NO: 172491 | | 2018/02/19 | | DOCUMENT NUMBER | | DOC TYPE DOC PART REVISION |
| ▽ = 0 | 4 PLACES ± | | DRWN: VK10 | | 2018/02/20 | | SD-170335-0003 | | PSD 001 E1 |
| ▽ = 0 | 3 PLACES ± | | CHK'D: DVARVARA | | 2018/02/22 | | MATERIAL NUMBER | | CUSTOMER |
| ▽ = 0 | 2 PLACES ± 0.13 | | APPR: TELO | | INITIAL REVISION: | | SEE CHART | | GENERAL MARKET |
| ▽ = 0 | 1 PLACE ± 0.25 | | APPR: JLAURX | | DRWN: JBINGHAM | | SERIES | | SHEET NUMBER |
| ▽ = 0 | 0 PLACES ± | | THIRD ANGLE PROJECTION | | DRAWING | | 170335 | | 2 OF 3 |
| ▽ = 0 | DRAFT WHERE APPLICABLE MUST REMAIN WITHIN DIMENSIONS | | C-SIZE | | SERIES | | MATERIAL NUMBER | | CUSTOMER |
| ▽ = 0 | | | | | | | | | |



IMPACT 4 PAIR BOARD RELATIONSHIPS



| | | | | | | | | | | |
|---|--|-----------------|------------------------|---|-----------------|----------------------------------|------------|------------|--|--|
| THIS DRAWING CONTAINS INFORMATION THAT IS PROPRIETARY TO MOLEX ELECTRONIC TECHNOLOGIES, LLC AND SHOULD NOT BE USED WITHOUT WRITTEN PERMISSION | | | | | | | | | | |
| SYMBOLS | | DIMENSION UNITS | | SCALE | | CURRENT REV DESC: MIGRATED TO NX | | | | |
| ▽ = 0 | mm | 2:1 | | molex IMPACT 4-PAIR 85-OHM RIGHT GUIDED BACKPLANE SALES ASSEMBLY DRAWING PRODUCT CUSTOMER DRAWING DOCUMENT NUMBER: SD-170335-0003 DOC TYPE: PSD DOC PART: 001 REVISION: E1 MATERIAL NUMBER: SEE CHART CUSTOMER: GENERAL MARKET SHEET NUMBER: 3 OF 3 | | | | | | |
| ▽ = 0 | GENERAL TOLERANCES (UNLESS SPECIFIED) | | | | | | | | | |
| ▽ = 0 | ANGULAR TOL ± 0.5° | | | | | | | | | |
| ▽ = 0 | 4 PLACES ± | | | | | | | | | |
| ▽ = 0 | 3 PLACES ± | | | | | | | | | |
| ▽ = 0 | 2 PLACES ± 0.13 | | | | EC NO: 172491 | | 2018/02/19 | | | |
| ▽ = 0 | 1 PLACE ± 0.25 | | | | DRWN: VK10 | | 2018/02/20 | | | |
| ⊠ = 0 | 0 PLACES ± | | | | CHK'D: DVARVARA | | 2018/02/22 | | | |
| ■ = 0 | DRAFT WHERE APPLICABLE MUST REMAIN WITHIN DIMENSIONS | | THIRD ANGLE PROJECTION | | DRAWING | | SERIES | | | |
| ▽ = 0 | | | | | C-SIZE | | 170335 | | | |
| | | | | | | INITIAL REVISION: | | | | |
| | | | | | | DRWN: JBINGHAM | | 2012/11/13 | | |
| | | | | | | APPR: JLAURX | | 2012/11/16 | | |