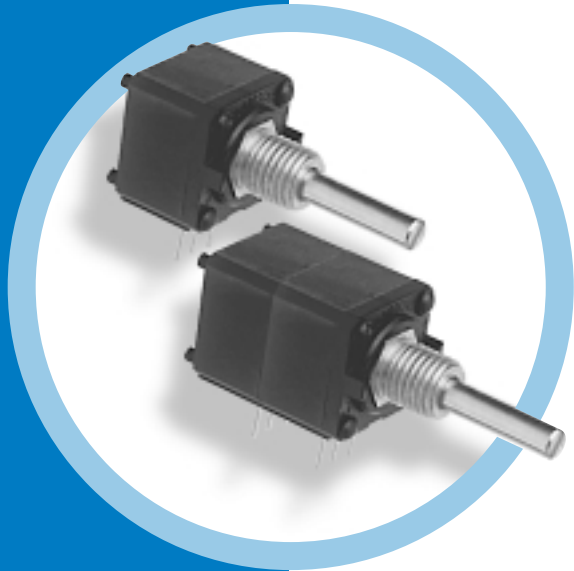


Model 590 & 591

NEW

Commercial Potentiometers



590 FEATURES:

- Commercial Modular Pot
- Conductive Plastic Element
- Smooth Feel
- High Rotational Life
- Quiet Electrical Output
- Robust Construction

591 FEATURES:

- Commercial Modular Pot
- Cermet Element
- Smooth Feel
- Temperature Stable
- Robust Construction

Electrical

RESISTANCE RANGE:

590: 100Ω to 5.0MΩ - linear
500Ω to 2M - non linear
591: 100Ω to 2.0MΩ - linear
250Ω to 1MΩ - non linear

RESISTANCE TOLERANCE:

Linear- Standard $\pm 10\%$ to 500K,
 $\pm 20\%$ over 500K
Non-Linear- Standard $\pm 10\%$ to 100K,
 $\pm 20\%$ over 100K

TAPER TOLERANCE:

20% of Nominal R @ 50%
Mechanical Rotation

LINEARITY:

$\pm 5\%$ Independent

END RESISTANCE:

Linear- 4Ω Max. Each End
Non-Linear- 4Ω Max., low side;
1% Total R high side

POWER RATING:

590: 0.5 watts @ 70°C, 0 watts @ 120°C
591: 1 watt @ 70°C, 0 watt @ 150°C,
Non-Linear or PC Mount, Derate 50%

EFFECTIVE ROTATION:

265° $\pm 5^\circ$ without Rotary Switch
240° $\pm 5^\circ$ with Rotary Switch

DYNAMIC NOISE:

590: 1.5% of total resistance
591: 3% of total resistance

MAXIMUM CONTINUOUS WORKING VOLTAGE:

350 VAC across end terminals,
but within power rating.

DIELECTRIC WITHSTANDING VOLTAGE:

Sea Level- 750 VAC
70,000 Feet- 350 VAC

SWITCH SPECIFICATIONS:

Rotary (AL) Switch: S.P.S.T. and
S.P.D.T., 125 mA, 28 VDC (Dry Circuit)
COW or CW Rotational Life 25,000
cycles (Rated Load).

Environmental

OPERATING TEMPERATURE:

590: -40°C to +120°C
591: -40°C to +150°C

STORAGE TEMPERATURE:

590: -55°C to +120°C
591: -55°C to +150°C

TEMPERATURE CYCLING:

590: -40°C to +120°C, (4% ΔR_t)
591: -40°C to +150°C, (3% ΔR_t)

LOAD LIFE:

1000 hrs. Rated Load @ 70°C
590: 10% ΔR_t
591: 5% ΔR_t

ROTATIONAL LOAD LIFE:

590: 50,000 cycles
591: 25,000 cycles

TCR (Over Storage Temperature Range):

590: ± 1000 ppm/°C
591: ± 150 ppm/°C

Mechanical

MECHANICAL ROTATION:

295° $\pm 5^\circ$

TORQUE:

Operating-Single section .2 to 3.0 oz. in.
Dual or triple section .3 to
4.5 oz. in.

Variation in a control- .5 oz. in.
Center Detent- .6 to 3.0 oz. in.
Stop Strength- 3 in. lbs. min.

WEIGHT (APPROX):

Single- 0.19 oz., Dual- 0.27 oz.,
Triple- 0.35 oz.

MARKING:

Ink Stamp on Periphery or Rear per
EIA standard

**ISO 9001
CERTIFIED**

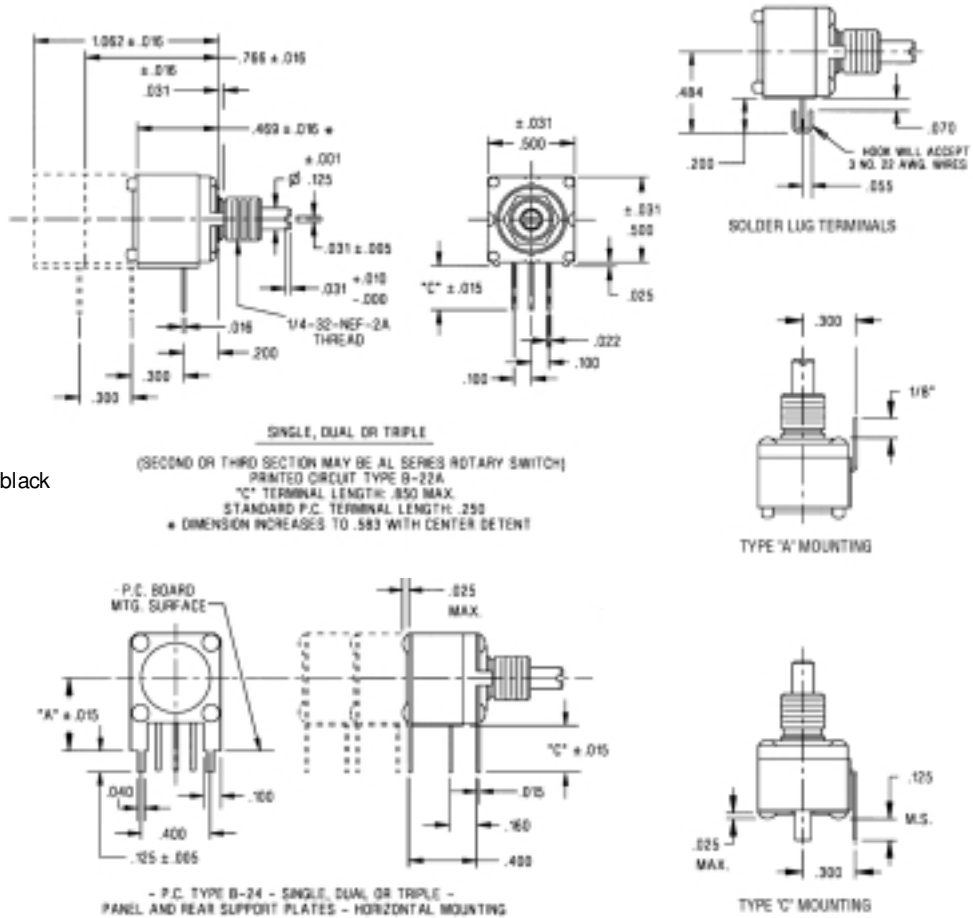
DI MENSIONS

CONSTRUCTION FEATURES:

- Up to three sections
- Mounting-Bushing
 - PC Support Plates
 - Type A forward mount
 - Type Crear mount
- Rotary switches
- Valley detents
- Solder hook terminals
- 3/8 Bush; 1/4 shaft
- Shaft seal
- Mounting seal
- Not sealed for board washing

CONSTRUCTION MATERIALS:

- Housing- Molded Thermoplastic-black
- Bushing- Brass
- Shaft- Brass
- Wper- Metal contact spring



ORDERING INFORMATION

When ordering, indicate the desired options as shown in this example:

590	S	X	1	M	16	S	103	S	P	
SERIES 590 CP 591 Cer	NUMBER OF SECTIONS S: Single D: Dual T: Triple	LOCATING PIN 7: None 1: SGL, 9 o'clock 2: SGL, 3 o'clock 5: DBL, 3 & 9 o'clock	METRIC BUSHING SIZE & SHAFT DIAMETER M: M7 x .75; 6mm L Shaft, 3mm Dia.	ENGLISH BUSHING SIZE & SHAFT DIAMETER N: 1/4 Dia x 1/4 L Shaft, 1/8 Dia J: 1/4 Dia x 3/8 L Shaft, 1/8 Dia G: 3/8 Dia x 3/8 L Shaft, 1/4 Dia	MATCHING METRIC Shaft length code, mm Single Shaft 10: 10mm 13: 13mm 16: 16mm 22: 22mm 25: 25mm	SHAFT STYLE S: Slotted F: Flatted P: Plain	RESISTANCE CODE (ohms) (EIA Code- First 2 significant digits, 3rd is number of zeros) 100 10K 500K 250 20K 750K 500 25K 1meg 750 50K 2meg 1K 75K 5meg 2.5K 100K 5K 250K	TAPER S: Linear Z: OWLog R: COWLog,	TERMINAL CONFIGURATION P: PC 0.250" long B: P terminals w/ B-24-5 support plate S: Solder Hook A: Type A Mounting C: Type C Mounting	
MECHANICAL CONFIGURATION X: None (single shaft S, D, T sections) S: Single w/ rotary switch P: Dual w/ rotary switch D: Single w/ center detent (1/4 Dia Bush) E: Dual w/ center detent (1/4 Dia Bush)		MOUNTING SURFACE 3/8" - 32 - NEF 2A			P.C. BOARD MOUNTING SURFACE "A" ± .015 "C" ± .015 - P.C. TYPE B-24 - SINGLE, DUAL OR TRIPLE - PANEL AND REAR SUPPORT PLATES - HORIZONTAL MOUNTING			TYPE 'W' MOUNTING TYPE 'C' MOUNTING		

To order or for custom applications, call 800-874-1874 or Fax 915-858-8450

800 874 1874 · Clarostat Sensors and Controls · El Paso, Texas 79936

CLAROSTAT