

# EMI/EMC FILTER

RoHS

## CA5 SERIES



### Features

- Remarkable attenuation for high voltage impulse
- Good shield effect by using metal case
- Excellent filtering characteristics for both differential mode and common mode
- Bidirectional structure effective for both noise from outside and internally generated

### Applications

- Digital equipments
- Battery, ESS equipments
- Personal computers and peripherals
- Measuring instruments, medical instruments
- For use in miniature equipment
- Suitable for FA equipments

## Specifications

Model	Rated Voltage (AC, DC)	Rated Current	Leakage Current (250V AC)	Operating Temperature
CA5-V23, W23	250V (50/60Hz)	1.5A	0.35mA max.	<div style="text-align: center;"> <p><b>Derating Curve</b></p> </div>
CA5-V33, W33		3A		
CA5-V43, W43		5A		

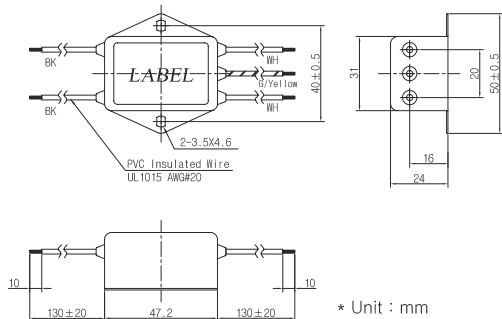
Note  
 Test Voltage : 1500V AC one minute, line to earth  
 Insulation Resistance : 300 Mohm  
 Voltage Drop : 1V max. at rated current  
 Weight : W2\* - 87g, W3\* - 90g, W4\* - 93g

## Model Number Construction

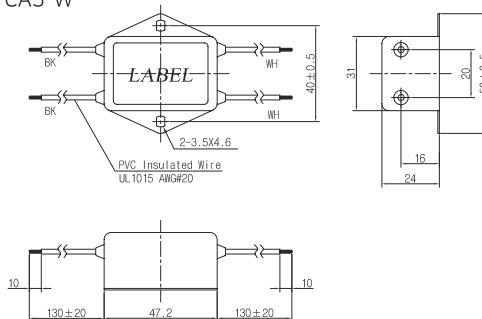
CA5	W	2	2
Series Description Screw Mounting/ Metal case	Input/Output Terminal W : without Ground Wire V : with Ground Wire	Current Rating : AC rms 2 : 1.5amp 3 : 3.0amp 4 : 5.0amp	Line-GND Cap.Value 2 : 2200 pF 3 : 3300 pF

# Shapes and Dimensions

CA5-V\*\*

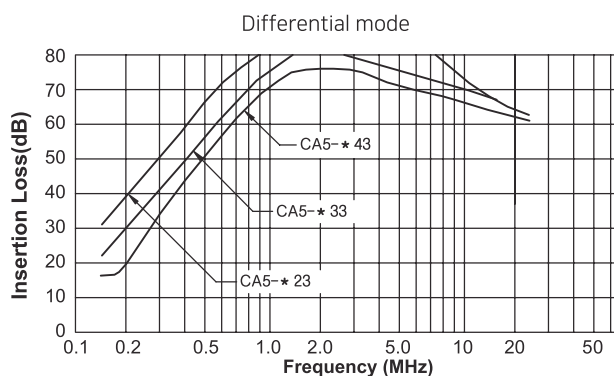
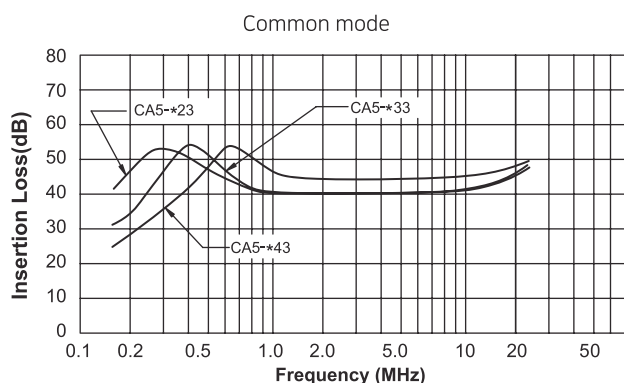


CA5-W\*\*

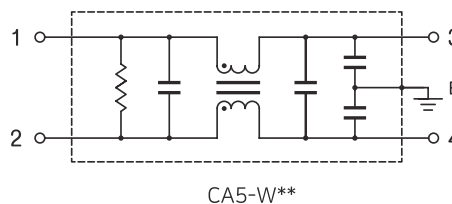
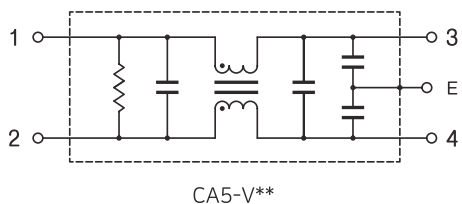


- \* Unit : mm
- \* General tolerance : ±1.0
- \* Metal Case
- \* Special wire length can be ordered

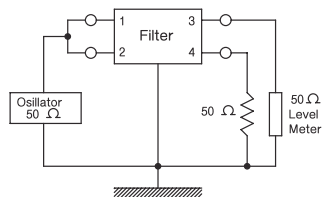
# Attenuation Characteristics



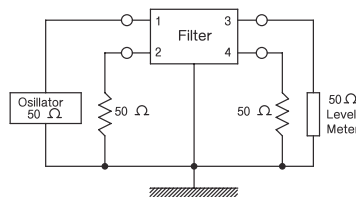
# Circuit Diagram



# Measurement Configuration



Common mode



Differential mode