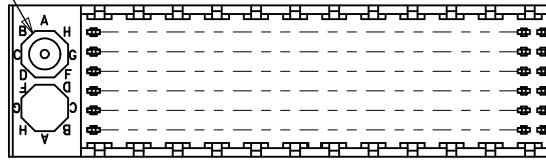
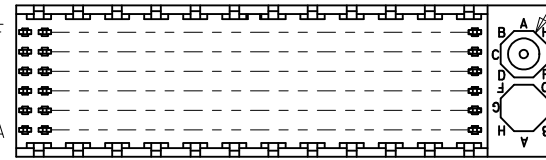


LOCATION A



REF. MATERIAL NUMBER 73783-1100
GUIDE PIN IS IN LOCATION A

LOCATION B



REF. MATERIAL NUMBER 73783-1101
GUIDE PIN IS IN LOCATION B

MATERIAL NUMBER ASSIGNMENT

73783- * * * *

NUMBER	CIRCUIT SIZE	DIM "A"	DIM "B"	DIM "C"
0	72	31.6	22.00	2.0
1	144	55.6	46.00	2.0
2	72	31.6	22.00	2.5
3	144	55.6	46.00	2.5
4	72	31.6	22.00	3.0
5	144	55.6	46.00	3.0
6	72	31.6	22.00	3.5
7	144	55.6	46.00	3.5

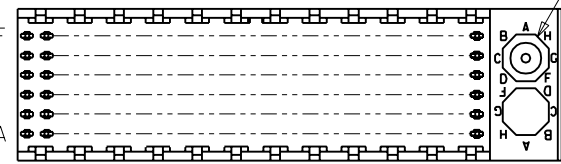
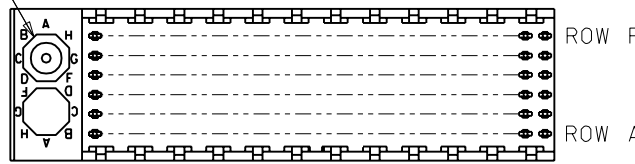
NUMBER	GUIDE POST LOCATION
00	A
01	B
02	N/A

NUMBER	DIM "H"
1	15.05
2	6.05
3	10.05

SEE SHEET 1 EC NO: UCP2008-3186 DRAWN: SPANNELLEY 2008/07/29 CHKD: MSIBARRA 2008/09/11 APPR: SMILLER 2008/09/16	QUALITY SYMBOLS ▽=0 ▽=0	GENERAL TOLERANCES (UNLESS SPECIFIED)		DIMENSION STYLE MM ONLY		SCALE 1:1	DESIGN UNITS METRIC	THIRD ANGLE PROJECTION				
		4 PLACES ± --- ± ---	3 PLACES ± --- ± ---	2 PLACES ± 0.05 ± ---	1 PLACE ± 0.10 ± ---	mm INCH	DRAWN BY JB INGHAM	DATE 1997/04/25	TITLE SALES ASSY HDM BACKPLANE STACKING MODULE, POLAR/ GUIDE OPTION SOLDER TAIL			
		ANGULAR ± 1/2°				DRAFT WHERE APPLICABLE MUST REMAIN WITHIN DIMENSIONS		CHECKED BY SREED	DATE 1997/04/25	APPROVED BY CBIXLER		DATE 1997/04/25
		MATERIAL NO.		SEE TABLE		MOLEX INCORPORATED		DOCUMENT NO. SD-73783-001		SHEET NO. 2 OF 2		

LOCATION A

LOCATION B



REF. MATERIAL NUMBER 73783-1100
GUIDE PIN IS IN LOCATION A

REF. MATERIAL NUMBER 73783-1101
GUIDE PIN IS IN LOCATION B

MATERIAL NUMBER ASSIGNMENT

73783- * * * *

NUMBER	CIRCUIT SIZE	DIM "A"	DIM "B"	DIM "C"
0	72	31.6	22.00	2.0
1	144	55.6	46.00	2.0
2	72	31.6	22.00	2.5
3	144	55.6	46.00	2.5
4	72	31.6	22.00	3.0
5	144	55.6	46.00	3.0
6	72	31.6	22.00	3.5
7	144	55.6	46.00	3.5

NUMBER	GUIDE POST LOCATION
00	A
01	B
02	N/A

NUMBER	DIM "H"
1	15.05
2	6.05
3	10.05

SEE SHEET 1
EC No. UDT2000-1073
DRWN:JBINGHAM 00/05/08
CHK: SREED 00/05/08
APPR:CBIXLER 00/05/08

QUALITY SYMBOLS
MAJOR $\blacktriangledown = 0$
CRITICAL $\nabla = 0$

GENERAL TOLERANCES: (UNLESS SPECIFIED)
mm INCH
4 PLACES $\pm 0.$ $\pm.$
3 PLACES $\pm 0.$ $\pm.$
2 PLACES $\pm 0.N/A$ $\pm.$
1 PLACE $\pm 0.N/A$ $\pm.$
ANGULAR: \pm $^{\circ}$
DRAFT WHERE APPLICABLE MUST REMAIN WITHIN DIMENSIONS

SCALE ---:---
DESIGN UNITS mm INCH
DRAWN BY & DATE
JBINGHAM 97/04/25
CHECKED BY & DATE
SREED 97/04/25
APPROVED BY & DATE
CBIXLER 97/04/25
CAD FILENAME
S73783X2.DGN

DIMENSIONS: mm INCH mm ONLY
THIRD ANGLE PROJECTION
TITLE: SALES ASSEMBLY
HDM BACKPLANE STACKING MODULE
POLAR/GUIDE OPTION SOLDER TAIL
MOLEX INCORPORATED
MATERIAL NO. SEE CHART
DRAWING NO. SD-73783-001
SHEET NO. 2
SIZE B