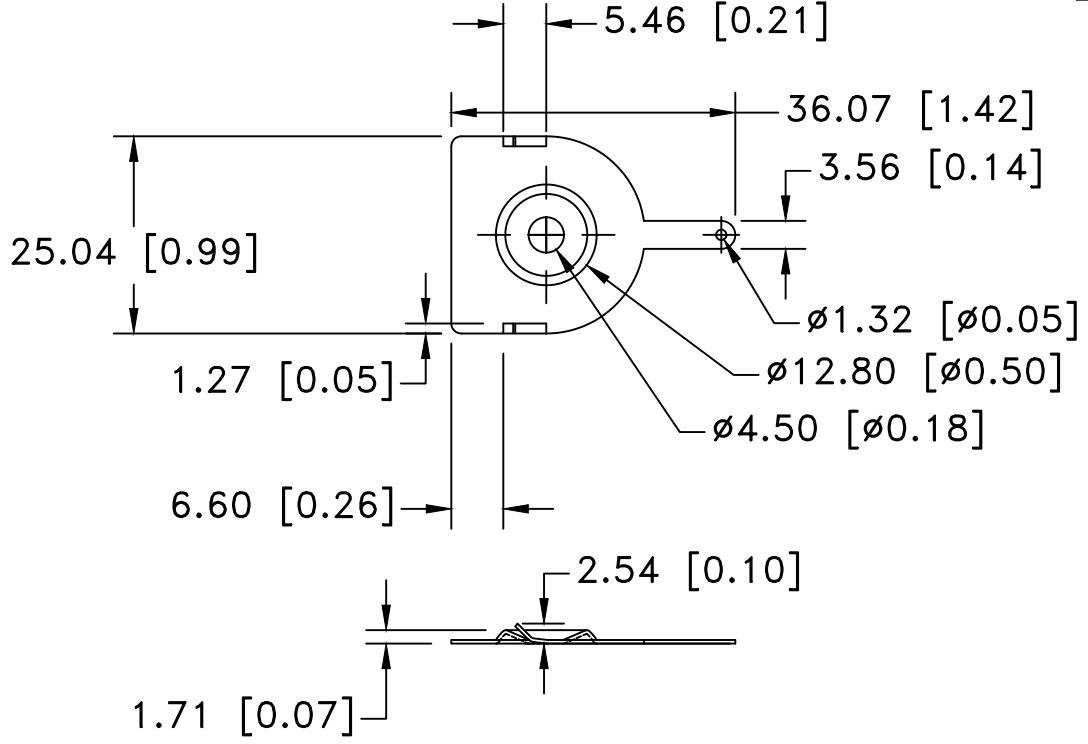



Date	SYM	REVISION RECORD	AUTH	DR.	CK.
2/17/07	A	ADDED "ROHS COMPLIANT"	T.B.	B.S.	
11/21/14	B	UPDATED TO ROHS 2 COMPLIANT	T.B.	B.S.	
12/01/20	C	REDESIGNED LOCKING TAB	T.B.	B.S.	



NOTES:

- 1. MATERIAL:
CONTACT PLATE: 0.45mm (0.018") THICK
ROHS COMPLIANT

Tolerance (Except as noted)	 Memory Protection Devices, Inc 200 Broad Hollow Road, Farmingdale, New York 11735		
decimal $\pm .5$ (.020)		Scale	Drawn By B.S.
Fractional $\pm .8$ (.030)	Title POSITIVE CONTACT FOR "D" CELL		
Angular $\pm 3^\circ$	Date 12/01/20	Drawing Number BK-875	