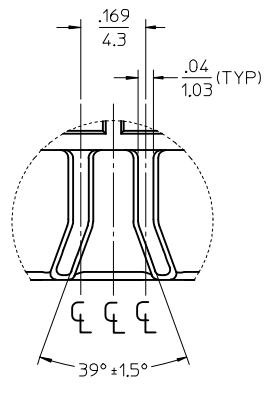
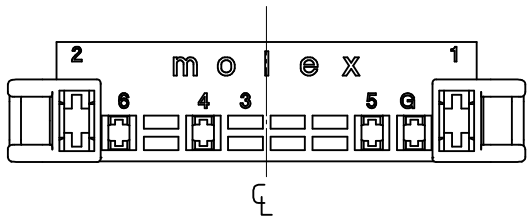


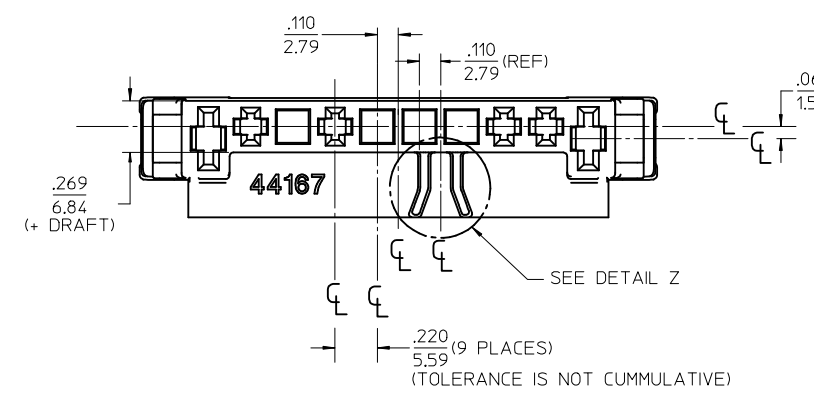
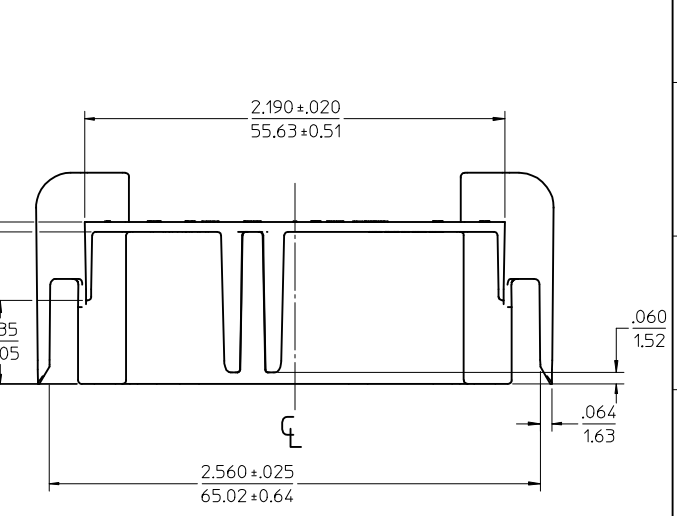
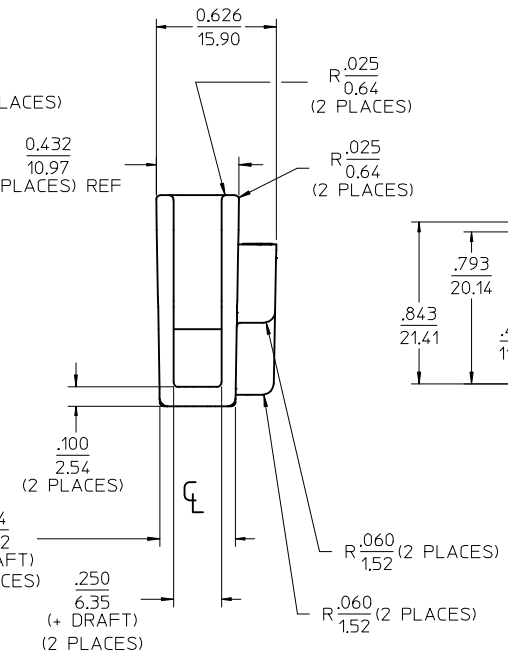
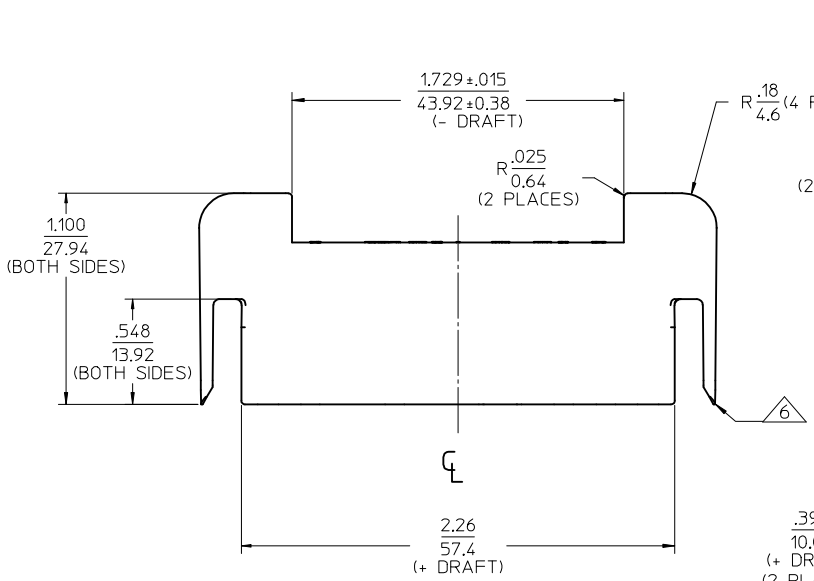
13	12	11	10	9	8	7	6	5	4	3	2	1
ITEM NO.	MATERIAL											
44167-0001	A											
44167-0003	B											



DETAIL Z  
SCALE 4:1

NOTES

- MATERIAL:
  - A: NYLON, PA66, UL94V-2, COLOR: NATURAL
  - B: NYLON, PA6, UL94V-2, COLOR: NATURAL (BEIGE)
  - IEC 60335-1 GLOW WIRE CAPABLE
- FINISH: NONE
- PRODUCT SPECIFICATION: PSX-42865-0001, PSX-42865-0002 & PS-43374-001
- PACKAGING SPECS: HOUSINGS ARE PACKED PER PK-42865-001.
- THIS CONNECTOR HOUSING FOR USE WITH TERMINALS:
  - .125/3.18 SPADE: 1508-\* & 43374-\*\*\*1 (4-PL MAX)
  - .250/6.35 SPADE: 41422-3\*\*\*5\*\* (2-PL MAX)
- THE OUTSIDE EDGES ASSOCIATED WITH THIS SURFACE TO HAVE .02/0.51 RADII.
- PART CONFORMS TO CLASS B REQUIREMENTS OF COSMETIC SPEC PS-45499-002. EXCEPTION: PARTS MOLDED IN MATERIAL B MEET CLASS 'C' REQUIREMENTS FOR FLASH, AND SINK.
- TEXT ON PART IS FOR REFERENCE ONLY. TEXT AND TEXT LOCATION MAY VARY DEPENDING ON PART NUMBER AND/OR TOOL.

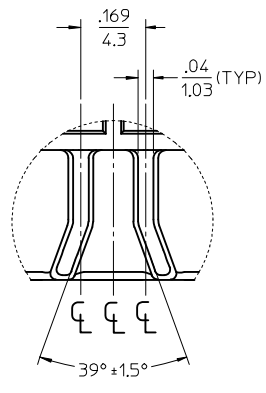
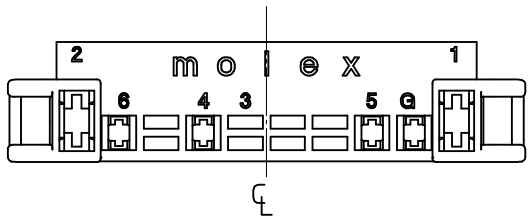


REV	DESCRIPTION	DATE	APPR	CHKD	DRWN	EC NO	ADD
9		2017/01/20	FSMITH	JFOX	SLAFTER	UCP2017-1474	44167-0003
		2017/01/05					
		2017/01/04					

QUALITY SYMBOLS	GENERAL TOLERANCES (UNLESS SPECIFIED)	
	mm	INCH
▽=0	4 PLACES ± .025	± .010
▽=0	3 PLACES ± .025	± 0.014
▽=0	2 PLACES ± 0.35	± .014
	1 PLACE ± .025	± .014
	0 PLACE ±	±
	ANGULAR ±1/2°	
	DRAFT WHERE APPLICABLE MUST REMAIN WITHIN DIMENSIONS	

DIMENSION STYLE		SCALE	DESIGN UNITS	THIRD ANGLE PROJECTION
IN/MM		1:1	INCH	
DRAWN BY	DATE	TITLE		
TGREGORI	2003/03/27	HOUSING CONNECTOR		
CHECKED BY	DATE	6 CKT.; TOOL REM. LATCH		
BWIRKUS	2003/03/27	DRYER MOTOR APPLICATION		
APPROVED BY	DATE	molex		
BWIRKUS	2003/03/27	DOCUMENT NO. SD-44167-001		
MATERIAL NO.	SEE CHART	SHEET NO. 1 OF 1		
SIZE	C	THIS DRAWING CONTAINS INFORMATION THAT IS PROPRIETARY TO MOLEX INCORPORATED AND SHOULD NOT BE USED WITHOUT WRITTEN PERMISSION		

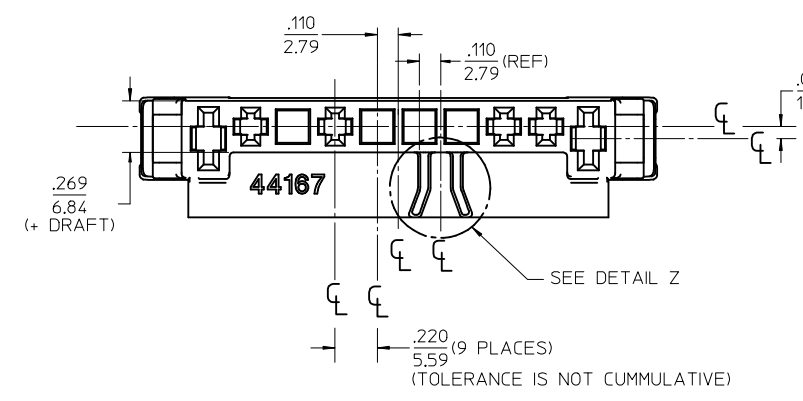
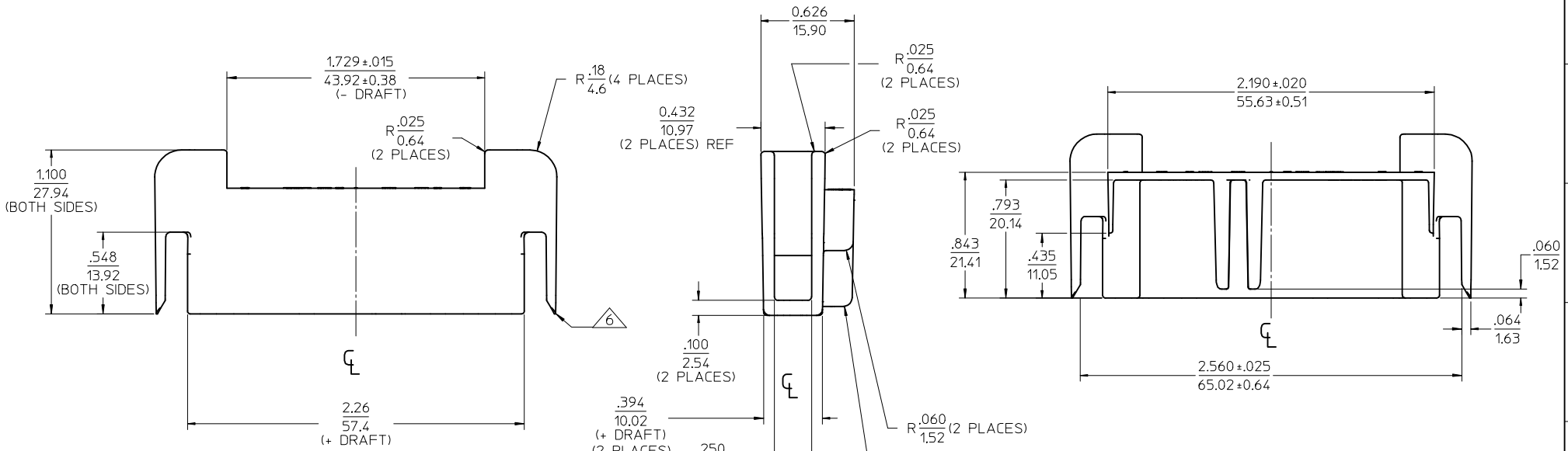
ITEM NO.	MATERIAL
44167-0001	A
44167-0003	B



DETAIL Z  
SCALE 4:1

NOTES

- MATERIAL:
  - A: NYLON, PA66, UL94V-2, COLOR: NATURAL
  - B: NYLON, PA6, UL94V-2, COLOR: NATURAL (BEIGE)
  - IEC 60335-1 GLOW WIRE CAPABLE
- FINISH: NONE
- PRODUCT SPECIFICATION: PSX-42865-0001, PSX-42865-0002 & PS-43374-001
- PACKAGING SPECS: HOUSINGS ARE PACKED PER PK-42865-001.
- THIS CONNECTOR HOUSING FOR USE WITH TERMINALS:
  - .125/3.18 SPADE: 1508-\* & 43374-\*\*\*1 (4-PL MAX)
  - .250/6.35 SPADE: 41422-3\*\*\*5\*\* (2-PL MAX)
- THE OUTSIDE EDGES ASSOCIATED WITH THIS SURFACE TO HAVE .02/0.51 RADII.
- PART CONFORMS TO CLASS B REQUIREMENTS OF COSMETIC SPEC PS-45499-002. EXCEPTION: PARTS MOLDED IN MATERIAL B MEET CLASS "C" REQUIREMENTS FOR FLASH, AND SINK.
- TEXT ON PART IS FOR REFERENCE ONLY. TEXT AND TEXT LOCATION MAY VARY DEPENDING ON PART NUMBER AND/OR TOOL.



REV	DESCRIPTION	QUALITY SYMBOLS	GENERAL TOLERANCES (UNLESS SPECIFIED)		DIMENSION STYLE		SCALE	DESIGN UNITS	THIRD ANGLE PROJECTION
			mm	INCH	IN/MM	DATE			
ADD	44167-0003		4 PLACES	± .005	± .005	TGREGORI	2003/03/27	<b>HOUSING CONNECTOR</b> <b>6 CKT.: TOOL REM. LATCH</b> <b>DRYER MOTOR APPLICATION</b> 	DOCUMENT NO. <b>SD-44167-001</b> SHEET NO. <b>1 OF 1</b>
EC NO:	UCP2017-1474		3 PLACES	± .010	± 0.010	CHECKED BY	DATE		
DRWING:	SLAFTER	2017/01/04	2 PLACES	± 0.015	± 0.014	BWIRKUS	2003/03/27		
CHKD:	JFOX	2017/01/05	1 PLACE	± 0.35	± .---	APPROVED BY	DATE		
APPR:	FSMITH	2017/01/20	0 PLACE	± .---	± .---	BWIRKUS	2003/03/27		
ANGULAR ±1/2°			DRAFT WHERE APPLICABLE MUST REMAIN WITHIN DIMENSIONS		MATERIAL NO. <b>SEE CHART</b>				