

FIG 1
 MW-15-03-X-D-XXX-XXX SHOWN
 ALL DIMENSIONS ARE SYMMETRIC ABOUT THE CENTERLINE.

- NOTES:
1. OTHER COMPONENTS PLACED ON PCB SHALL AVOID THIS ZONE.
 2. FOR ADDED MECHANICAL STABILITY, SAMTEC RECOMMENDS BOARD SPACERS BE USED IN APPLICATIONS WITH GOLD OR SELECTIVE GOLD PLATED CONNECTORS. CONTACT IPG@SAMTEC.COM FOR MORE INFORMATION.

PROPRIETARY NOTE
 THIS DOCUMENT CONTAINS INFORMATION CONFIDENTIAL AND PROPRIETARY TO SAMTEC, INC. AND SHALL NOT BE REPRODUCED OR TRANSFERRED TO OTHER DOCUMENTS OR DISCLOSED TO OTHERS OR USED FOR ANY PURPOSE OTHER THAN THAT WHICH IT WAS OBTAINED WITHOUT THE EXPRESSED WRITTEN CONSENT OF SAMTEC, INC.



520 PARK EAST BLVD, NEW ALBANY, IN 47150
 PHONE: 812-944-6733 FAX: 812-948-5047
 e-Mail info@SAMTEC.com code 55322

G

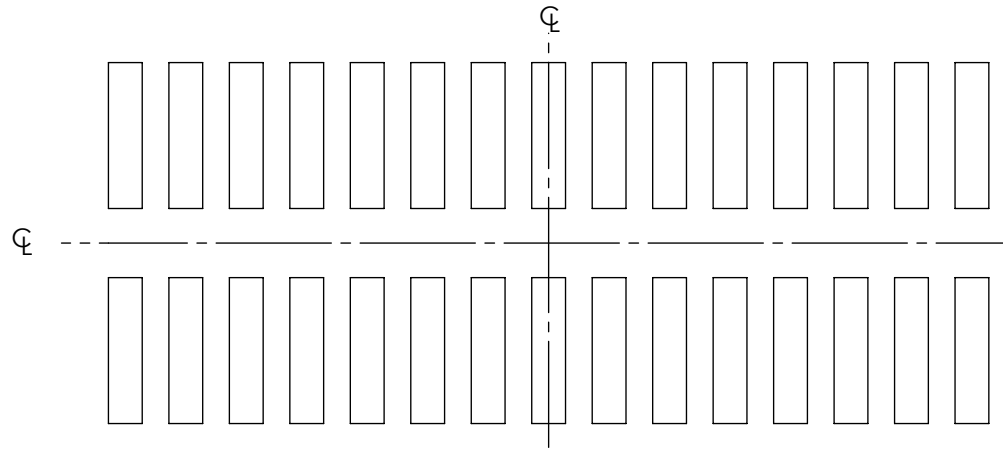


FIG 2
 MW-15-03-X-D-XXX-XXX SHOWN
 (DIFFERENT AS SHOWN, OTHERWISE SAME AS FIG 1)
 ALL DIMENSIONS ARE SYMMETRIC ABOUT THE CENTERLINE.

NOTES:

- 1. STENCIL TO BE .006[0.15] THICK.

PROPRIETARY NOTE

THIS DOCUMENT CONTAINS INFORMATION
 CONFIDENTIAL AND PROPRIETARY TO
 SAMTEC, INC. AND SHALL NOT BE REPRODUCED
 OR TRANSFERRED TO OTHER DOCUMENTS OR
 DISCLOSED TO OTHERS OR USED FOR ANY
 PURPOSE OTHER THAN THAT WHICH IT WAS
 OBTAINED WITHOUT THE EXPRESSED WRITTEN
 CONSENT OF SAMTEC, INC.



520 PARK EAST BLVD, NEW ALBANY, IN 47150
 PHONE: 812-944-6733 FAX: 812-948-5047
 e-Mail info@SAMTEC.com code 55322