

## Mounting flange - HC-B 32/48-AF - 1580524

Please be informed that the data shown in this PDF Document is generated from our Online Catalog. Please find the complete data in the user's documentation. Our General Terms of Use for Downloads are valid (<http://download.phoenixcontact.com>)

HEAVYCON-ADVANCE mounting flange for screw locking HC B 32/48



### Key commercial data

|                      |          |
|----------------------|----------|
| Packing unit         | 1 PCE    |
| Custom tariff number | 85389099 |
| Country of origin    | Germany  |

### Technical data

#### Ambient conditions

|                                 |                   |
|---------------------------------|-------------------|
| Ambient temperature (operation) | -40 °C ... 200 °C |
|---------------------------------|-------------------|

#### General

|                       |   |
|-----------------------|---|
| Pg screw connection   | None  |
| Material              | Zinc die-cast   |
| Note                  | 2 for every connector   |
| Assembly instructions | In order to guarantee that the ground conductor contact functions even when plugged in at an angle, the two panel mounting flanges must have sufficient electrical contact with the metal mounting panel. |

### Classifications

#### eCl@ss

|            |          |
|------------|----------|
| eCl@ss 4.0 | 27140816 |
| eCl@ss 4.1 | 27140816 |
| eCl@ss 5.0 | 27189239 |
| eCl@ss 5.1 | 27189239 |
| eCl@ss 6.0 | 27261207 |

# Mounting flange - HC-B 32/48-AF - 1580524

## Classifications

eCl@ss

|            |          |
|------------|----------|
| eCl@ss 7.0 | 27440210 |
| eCl@ss 8.0 | 27440210 |

ETIM

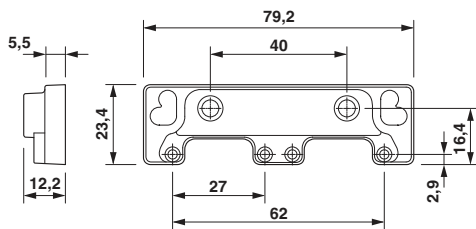
|          |          |
|----------|----------|
| ETIM 2.0 | EC000007 |
| ETIM 3.0 | EC000007 |
| ETIM 4.0 | EC000437 |
| ETIM 5.0 | EC002310 |

UNSPSC

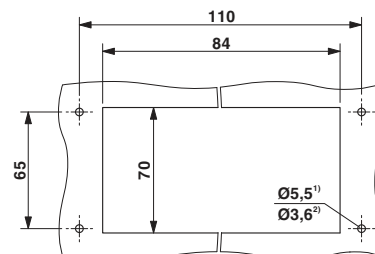
|               |          |
|---------------|----------|
| UNSPSC 6.01   | 31261501 |
| UNSPSC 7.0901 | 31261501 |
| UNSPSC 11     | 31261501 |
| UNSPSC 12.01  | 31261501 |
| UNSPSC 13.2   | 31261501 |

## Drawings

Dimensioned drawing



Dimensioned drawing



- 1) Standard M5 screw
- 2) Self-locking Torx® 20, M5