

Ferrite Bead

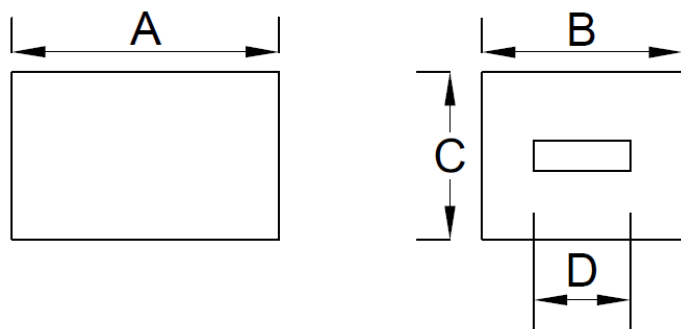
BPH403025R5-530T

1. Features

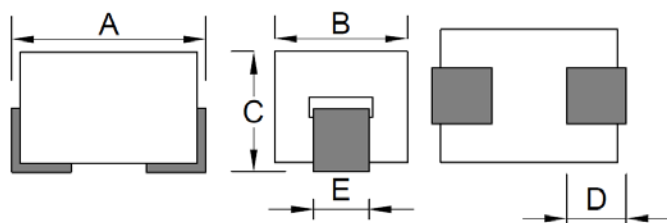
- 100% Lead(Pb) & Halogen-Free and RoHS compliant.
- Operating temperature-40~+125°C (Including self - temperature rise)



2. Dimension



| CORE SIZE | | | |
|------------|------------|------------|------------|
| A(mm) | B(mm) | C(mm) | D(mm) |
| 4.00 ±0.25 | 3.10 ±0.15 | 2.50 ±0.15 | 1.50 ±0.15 |



| PRODUCT SIZE | | | | |
|--------------|-----------|----------|-----------|-----------|
| A(mm) | B(mm) | C(mm) | D(mm) | E(mm) |
| 4.30~5.10 | 3.1 ±0.15 | 2.70~3.1 | 1.35±0.20 | 1.35±0.15 |

3. Part Numbering

BPH **403025** **R5** - **530** **T**

A B C D E

A: Series

B: Dimension

C: Material

Ferrite Core

D: Impedance

530=53Ω

E: Packaging

T=Taping and Reel

4. Specification

| TAI-TECH Part Number | ELECTRICAL REQUIREMENTS 1 | | | ELECTRICAL REQUIREMENTS 2 | | | DCR (mΩ) Max. | Rated Current(A) | |
|-------------------------|------------------------------|------------------|----------------------------|------------------------------|------------------|----------------------------|---------------------|--------------------|--------------------|
| | Impedance (Ω) | Tolerance (%) | Test Frequency (MHz) | Impedance (Ω) | Tolerance (%) | Test Frequency (MHz) | | ΔT=40°C TYP. | ΔT=60°C TYP. |
| BPH403025R5-530T | 35 | ±25 | 25 | 53 | ±25 | 100 | 0.60 | 35.0(1) 15.0(2) | 45.0(1) 18.0(2) |

Note:

Rated Current :

(1) : Chroma high current test fixture.

(2) :PCB test fixture (30x45mm copper pattern , 50um copper thickness).

Typical Impedance v.s. Frequency Curve

