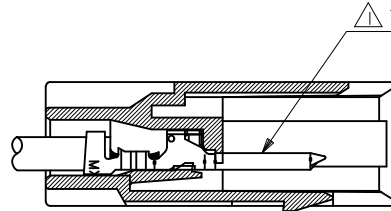


トレードマーク
TRADE MARK

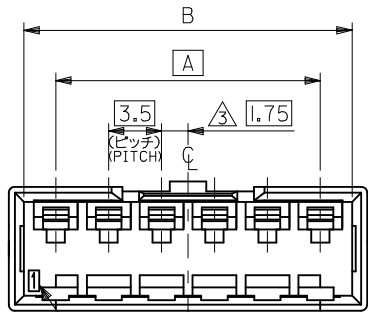
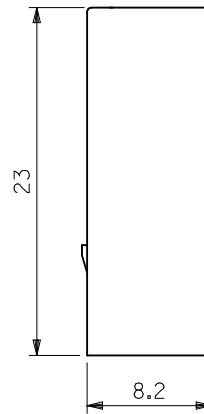
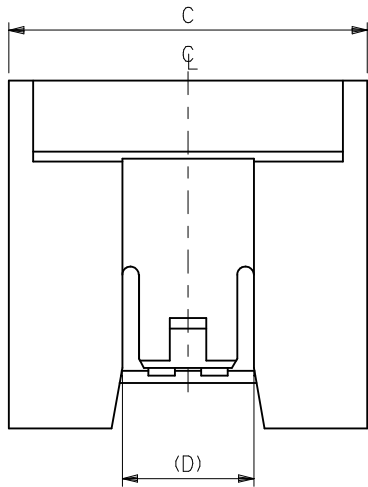


プラグ ターミナル
PLUG TERMINAL

注記 NOTES

- △ 適合プラグ ターミナル : 50419-****
APPLICABLE PLUG TERMINAL : 50419-****
- 2. 嵌合相手 : 51067 シリーズ
MATE WITH : 51067 SERIES
- △ 偶数極の製品に適用。
APPLY EVEN CIRCUIT PRODUCTS.

ターミナル装着状態図
TERMINAL ASSEMBLY DRAWING



回路番号
CIRCUIT NO.

8.7	34.2	32.2	28.0	51114-0910	9
8.7	20.2	18.2	14.0	-0510	5
8.7	16.7	14.7	10.5	-0410	4
6.1	13.2	11.2	7.0	-0310	3
6.1	9.7	7.7	3.5	51114-0210	2
(D)	C	B	A	ENG. NO.	CKT. 極数

REVISED EC NO: J2016-0730 DRWN: HOKUBAYASHI 2016/01/29 CHKD: SAKIYAMA 2016/01/29 APPR: KANEKO 2016/02/22	GENERAL TOLERANCES (UNLESS SPECIFIED)			DIMENSION STYLE MM ONLY		SCALE 3:1	DESIGN UNITS METRIC	THIRD ANGLE PROJECTION
	0.25 UNDER	UNDER	±0.03	DRAWN BY	DATE	TITLE		
	0.25 OVER	0.5 UNDER	±0.05	MFUJIKURA	1993/05/24	3.5 WIRE TO WIRE CONN. PLUG HOUSING		
	0.5 OVER	1.0 UNDER	±0.1	CHECKED BY	DATE			
	1.0 OVER	30 UNDER	±0.2	HHIRAMOTO	1993/09/07			
10 OVER	30 UNDER	±0.25	APPROVED BY	DATE				
30 OVER		±0.3	HHIRATA	2011/06/29	MATERIAL NO.	DOCUMENT NO.	SHEET NO.	
ANGULAR ±3 °			SEE TABLE		SD-51114-001		1 OF 1	
DRAFT WHERE APPLICABLE MUST REMAIN WITHIN DIMENSIONS				SIZE A3	THIS DRAWING CONTAINS INFORMATION THAT IS PROPRIETARY TO MOLEX ELECTRONIC TECHNOLOGIES, LLC AND SHOULD NOT BE USED WITHOUT WRITTEN PERMISSION			