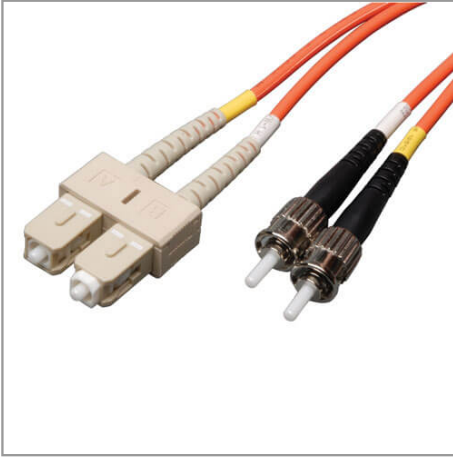


Duplex Multimode 62.5/125 Fiber Patch Cable (SC/ST), 9M (30 ft.)

MODEL NUMBER: N304-09M



Highlights

- Premium PVC 62.5/125µm multimode patch cables
- Attenuation loss meets or exceeds the latest industry standards

System Requirements

- Any fiber optic hardware or NIC card requiring multimode duplex cable with SC/ST connectors

Package Includes

- 9-meter (30ft) duplex MMF cable ST/SC 62.5/125 fiber

Description

Tripp Lite's 9-meter (30ft) multimode duplex fiber optic SC/ST patch cable is manufactured from 62.5/125 zipcord fiber. The cable has ST to SC connectors, a PVC jacket and is FDDI and OFNR rated. Duplex multimode fiber is most commonly used in LAN applications.

Features

- Manufactured from 62.5/125 duplex (zipcord) fiber
- PVC jacket
- Length: 9-meters(30ft) Connectors: 2 ST to 2 SC connectors
- Insertion loss testing performed on every connector (0.2db typical) and provided with cable
- Beveled edge on ends of glass makes insertion of plug a breeze
- Fiber made from glass (not a polymer)
- Color coded shrouds identify transmit and receive
- Fiber optic distributed data interface (FDDI) rated
- OFNR (riser rated)

Specifications

OVERVIEW	
UPC Code	037332135209
Technology	Multimode
Optical Mode	OM1
PHYSICAL	
Cable Jacket Color	Orange

Connector Color	White; Black
Cable Jacket Material	LSZH
Cable Jacket Rating	OFNR
Clad Diameter (microns)	125
Core Diameter (microns)	62.5
Number of Fibers	2
Cable Length (ft.)	29.5
Cable Length (m)	8.99
Cable Length (in.)	354.3
Minimum Bend Radius	20MM (Dynamic); 10MM (Static)
Shipping Dimensions (hwd / in.)	10.00 x 8.00 x 1.00
Shipping Dimensions (hwd / cm)	25.40 x 20.32 x 2.54
Shipping Weight (lbs.)	0.25
Shipping Weight (kg)	0.12
ENVIRONMENTAL	
Operating Temperature Range	-4 to 140 °F (-20 to 60 °C)
Storage Temperature Range	-4 to 140 °F (-20 to 60 °C)
Operating Humidity Range	5% to 85% RH, Non-Condensing
Storage Humidity Range	35% to 65% RH, Non-Condensing
COMMUNICATIONS	
Network Compatibility	1 Gbps (Gigabit); 10 Gbps
Attenuation @ 850NM	3.0dB/Km
Insertion Loss	0.20dB
CONNECTIONS	
Side A - Connector 1	SC DUPLEX (MALE)
Side B - Connector 1	ST DUPLEX (MALE)
Endface Polish	PC
FEATURES & SPECIFICATIONS	
Push/Pull Tabs	No
Breakout	No
Trunk	No
STANDARDS & COMPLIANCE	

Product Compliance	RoHS; REACH
WARRANTY & SUPPORT	
Product Warranty Period (Worldwide)	Lifetime limited warranty