

CUSTOMER TERMINAL	RoHS	LEAD(Pb)-FREE
Sn96%, Ag4%	Yes	Yes

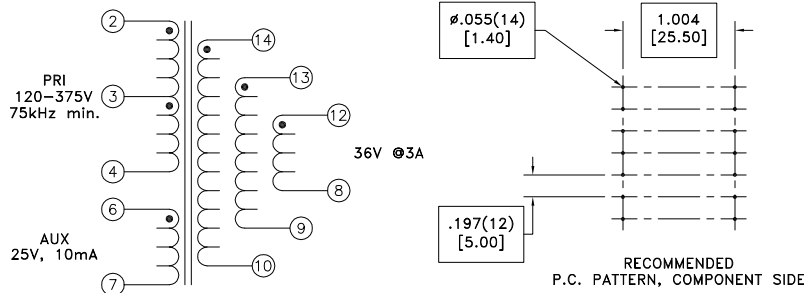
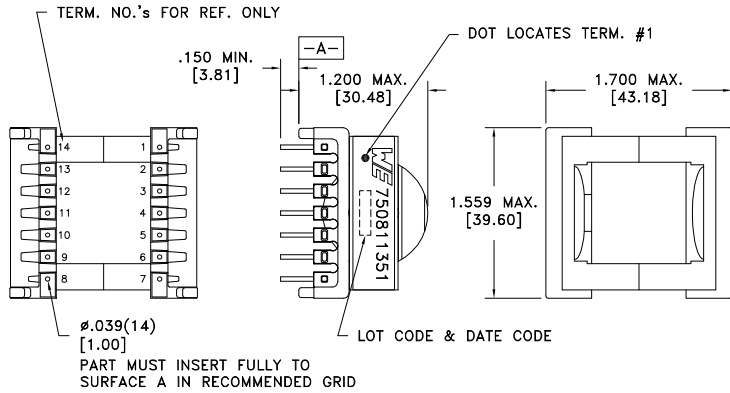


ELECTRICAL SPECIFICATIONS @ 25°C unless otherwise noted:

PARAMETER	TEST CONDITIONS	VALUE
D.C. RESISTANCE	2-4 @20°C	0.135 ohms ±20%
D.C. RESISTANCE	6-7 @20°C	0.055 ohms max.
D.C. RESISTANCE	8-12 @20°C	0.080 ohms max.
D.C. RESISTANCE	9-13 @20°C	0.080 ohms max.
D.C. RESISTANCE	10-14 @20°C	0.080 ohms max.
INDUCTANCE	2-4 10kHz, 100mVAC, Ls	180uH ±10%
SATURATION CURRENT	20% rolloff from initial	7.40A
LEAKAGE INDUCTANCE	2-4 tie(6+7, 8+9+10+12+13+14), 100kHz, 100mVAC, Ls	1.6uH typ., 4.0uH max.
DIELECTRIC	2-14 tie(4+6, 12+13+14), 4500VAC, 1 second	4500VAC, 1 minute
DIELECTRIC	2-6 1250VAC, 1 second	1000VAC, 1 minute
TURNS RATIO	(2-4):(14-10)	4:1, ±1%
TURNS RATIO	(2-4):(13-9)	4:1, ±1%
TURNS RATIO	(2-4):(12-8)	4:1, ±1%
TURNS RATIO	(14-10):(6-7)	1.5:1, ±1%
TURNS RATIO	(2-3):(3-4)	1:1, ±1%

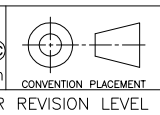
GENERAL SPECIFICATIONS:

Designed to comply with the following requirements as defined by IEC61558-2-17:  
 - Reinforced insulation for a primary circuit at a working voltage of 400VDC.



Wire insulation & RoHS status not affected by wire color.  
 Wire insulation color may vary depending on availability.

REV.	DATE	Packaging Specifications
6C	10/14	Method: Tray PKG-0904 www.we-online.com/midcom
6B	12/12	
6A	2/12	SEE REVISION SHEET FOR REVISION LEVEL



Tolerances unless otherwise specified:  
 Angles: ±1°  
 Fractions: ±1/64  
 Decimals: ±.005 [.13]  
 Footprint: ±.001 [.03]  
 This drawing is dual dimensioned. Dimensions in brackets are in millimeters.

DRAWING TITLE  
**TRANSFORMER**  
 eiSos p/n: 750811351

PART NO.  
**750811351**  
 SPECIFICATION SHEET 1 OF 1

