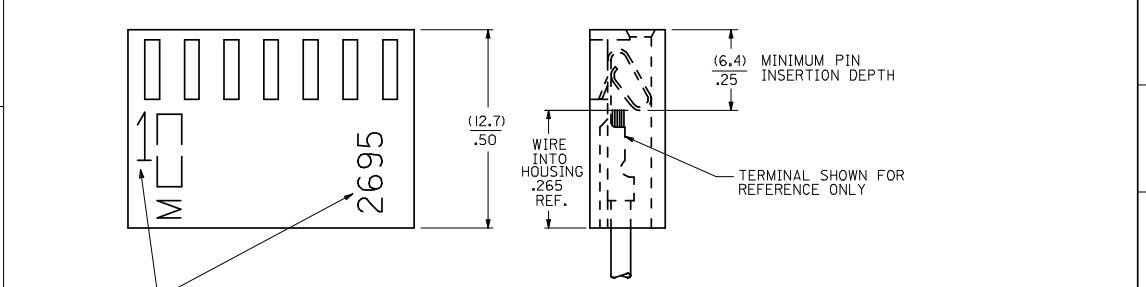
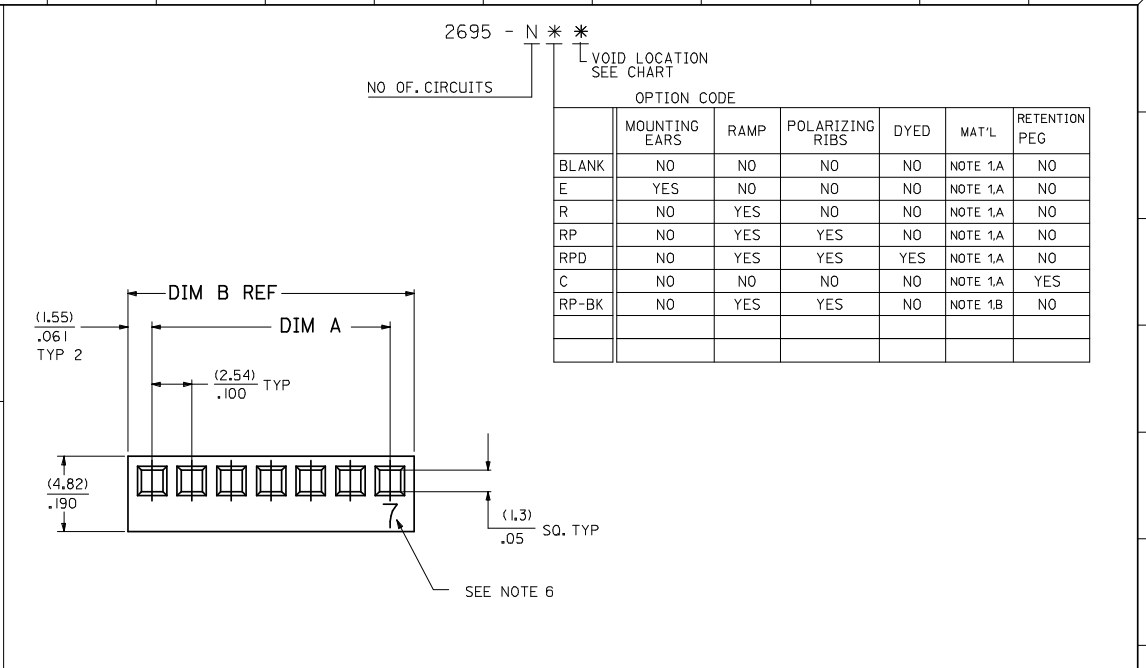
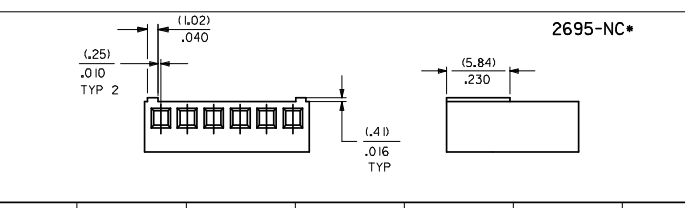
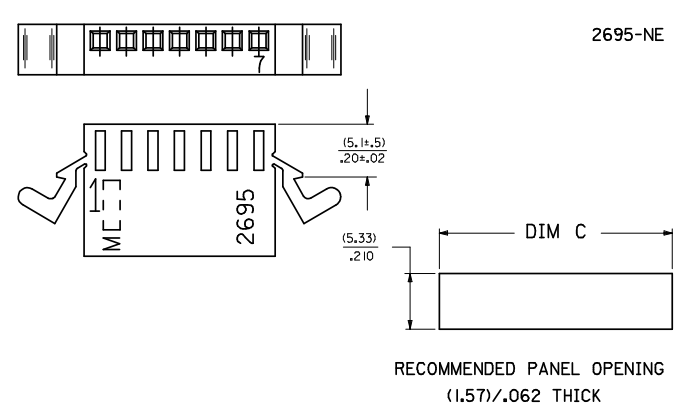
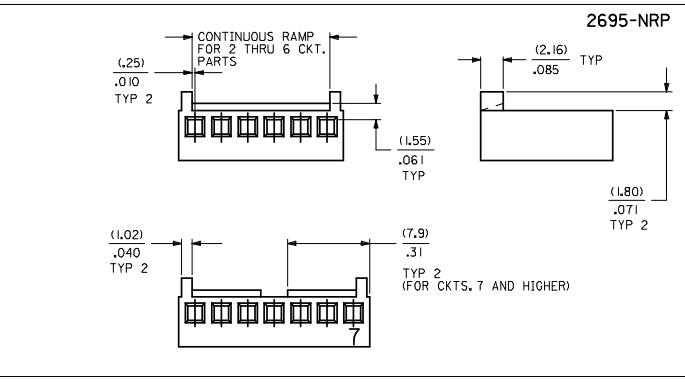
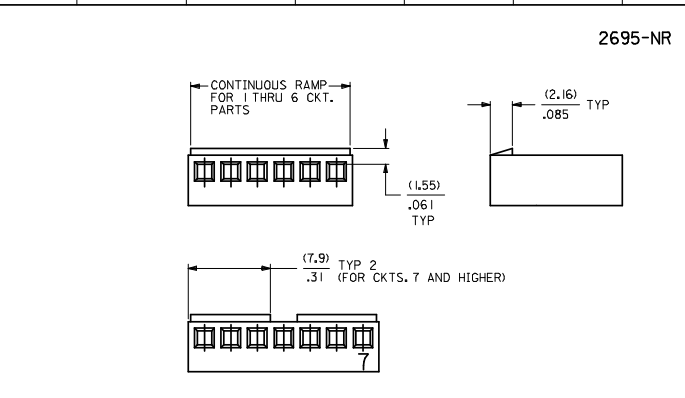


| NO. OF CKT'S. | DIM. A | DIM. B | DIM. C |
|---------------|---------------------------|-------------------|-------------------|
| 1 | N/A | (3.10) .122 | (7.16) .282 |
| 2 | (2.54+.05) .100+.002 | (5.64) .222 | (9.70) .382 |
| 3 | (5.08+.05) .200+.002 | (8.18) .322 | (12.24) .482 |
| 4 | (7.62+.05) .300+.002 | (10.72) .422 | (14.78) .582 |
| 5 | (10.16+.05) .400+.002 | (13.26) .522 | (17.32) .682 |
| 6 | (12.70+.08) .500+.003 | (15.80) .622 | (19.86) .782 |
| 7 | (15.24+.08) .600+.003 | (18.34) .722 | (22.40) .882 |
| 8 | (17.78+.08) .700+.003 | (20.88) .822 | (24.94) .982 |
| 9 | (20.32+.10) .800+.004 | (23.42) .922 | (27.48) 1.082 |
| 10 | (22.86+.10) .900+.004 | (25.96) 1.022 | (30.02) 1.182 |
| 11 | (25.4+.10) 1.000+.004 | (28.50) 1.122 | (32.56) 1.282 |
| 12 | (27.94+.13) 1.100+.005 | (31.04) 1.222 | (35.10) 1.382 |
| 13 | (30.48+.13) 1.200+.005 | (33.58) 1.322 | (37.64) 1.482 |
| 14 | (33.02+.13) 1.300+.005 | (36.12) 1.422 | (40.18) 1.582 |
| 15 | (35.56+.13) 1.400+.005 | (38.66) 1.522 | (42.72) 1.682 |
| 16 | (38.10+.15) 1.500+.006 | (41.20) 1.622 | (45.26) 1.782 |
| 17 | (40.64+.15) 1.600+.006 | (43.74) 1.722 | (47.80) 1.882 |
| 18 | (43.18+.15) 1.700+.006 | (46.28) 1.822 | (50.34) 1.982 |
| 19 | (45.72+.15) 1.800+.006 | (48.82) 1.922 | (52.88) 2.082 |
| 20 | (48.26+.15) 1.900+.006 | (51.36) 2.022 | (55.42) 2.182 |
| 21 | (50.80+.18) 2.000+.007 | (53.90) 2.122 | (57.96) 2.282 |
| 22 | (53.34+.18) 2.100+.007 | (56.44) 2.222 | (60.50) 2.382 |
| 23 | (55.88+.18) 2.200+.007 | (58.98) 2.322 | (63.04) 2.482 |
| 24 | (58.42+.18) 2.300+.007 | (61.52) 2.422 | (65.58) 2.582 |
| 25 | (60.96+.20) 2.400+.008 | (64.06) 2.522 | (68.12) 2.682 |
| 26 | (63.50+.20) 2.500+.008 | (66.60) 2.622 | (70.66) 2.782 |
| 27 | (66.04+.20) 2.600+.008 | (69.14) 2.722 | (73.20) 2.882 |
| 28 | (68.58+.20) 2.700+.008 | (71.68) 2.822 | (75.74) 2.982 |
| 29 | (71.12+.23) 2.800+.009 | (74.22) 2.922 | (78.28) 3.082 |
| 30 | (73.66+.23) 2.900+.009 | (76.76) 3.022 | (80.82) 3.182 |
| 31 | (76.20+.23) 3.000+.009 | (79.30) 3.122 | (83.36) 3.282 |
| 32 | (78.74+.23) 3.100+.009 | (81.84) 3.222 | (85.90) 3.382 |
| 33 | (81.28+.25) 3.200+.010 | (84.38) 3.322 | (88.44) 3.482 |
| 34 | (83.82+.25) 3.300+.010 | (86.92) 3.422 | (90.98) 3.582 |
| 35 | (86.36+.25) 3.400+.010 | (89.46) 3.522 | (93.52) 3.682 |
| 36 | (88.90+.25) 3.500+.010 | (92.00) 3.622 | (96.06) 3.782 |
| 37 | (91.44+.28) 3.600+.011 | (94.54) 3.722 | (98.60) 3.882 |
| 38 | (93.98+.28) 3.700+.011 | (97.08) 3.822 | (101.14) 3.982 |
| 39 | (96.52+.28) 3.800+.011 | (99.62) 3.922 | (103.68) 4.082 |
| 40 | (99.06+.28) 3.900+.011 | (102.16) 4.022 | (106.22) 4.182 |



- NOTES
1. MATERIAL: A - NYLON, UL94V-0, COLOR: WHITE
B - NYLON, UL94V-0, COLOR: BLACK
 2. FINISH: SEE TERMINAL DRAWING
 3. THIS HOUSING CONFORMS TO MOLEX PRODUCT SPECIFICATION PS-10-07.
 4. PACKAGING: N/A
 5. HOUSING TO BE USED WITH CRIMP TYPE TERMINAL NUMBER 2759, 22-30 GAUGE WIRE WITH (.157)/.062 DIAMETER MAXIMUM WIRE INSULATION.
 6. LAST CIRCUIT NUMBER TO BE DESIGNATED ON 7 CKTS. AND HIGHER, EXCEPT WHEN "MXI" APPEARS.
 7. CIRCUIT NUMBER "1" AND ENGINEERING NUMBER TO APPEAR ON PARTS 3 CKTS. AND HIGHER.

| | |
|------|------------|
| 3 | AM3 |
| 2 | AM3 |
| 1 | AM4 |
| SHT. | REV. |
| | AM4 |

| | | | |
|--------------------------------|---|--|---|
| REVISION SYMBOLS □=0 ▽=0 | GENERAL TOLERANCES (UNLESS SPECIFIED) mm INCH 4 PLACES ± .010 ± .005 3 PLACES ± .010 ± .005 2 PLACES ± 0.13 ± .01 1 PLACE ± 0.25 ± .01 ANGULAR ± 1/2° | DIMENSION STYLE MM/IN DRAWN BY PEREZ-ARGUET 1988/02/25 CHECKED BY PATEL 1988/02/25 APPROVED BY LENZ 1988/02/25 | SCALE --- INCH DESIGN UNITS INCH THIRD ANGLE PROJECTION |
| | DRAFT WHERE APPLICABLE MUST REMAIN WITHIN DIMENSIONS | MATERIAL NO. SEE CHART DOCUMENT NO. SD-2695 | TITLE (2.54)/.100 HOUSING FOR KK CRIMP TYPE TERMINALS 2695 SERIES DRAWING MOLEX INCORPORATED |

THIS DRAWING CONTAINS INFORMATION THAT IS PROPRIETARY TO MOLEX INCORPORATED AND SHOULD NOT BE USED WITHOUT WRITTEN PERMISSION

| 2695-N | | | 2695-NE | | | 2695-NR | | | 2695-NRP | | | 2695-NRPD | | | 2695-NRP-BK | | |
|------------|---------|------|------------|----------|------|------------|------------|------|------------|-------------|------|------------|------------|------|-------------|--------------|------|
| PART NO. | ENG NO. | VOID | PART NO. | ENG NO. | VOID | PART NO. | ENG NO. | VOID | PART NO. | ENG NO. | VOID | PART NO. | ENG NO. | VOID | PART NO. | ENG NO. | VOID |
| 22-01-2011 | 2695-1 | | | 2695-1E | | | 2695-1R | | N/A | 2695-1RP | | N/A | 2695-1RPD | | | | |
| 22-01-2021 | 2695-2 | | 22-01-2022 | 2695-2E | | 22-01-2027 | 2695-2R | | 22-01-3027 | 2695-2RP | | | 2695-2RPD | | 50-29-1557 | 2695-2RP-BK | |
| 22-01-2031 | 2695-3 | | 22-01-2032 | 2695-3E | | 22-01-2037 | 2695-3R | | 22-01-3037 | 2695-3RP | | | 2695-3RPD | | 50-29-1558 | 2695-3RP-BK | |
| 22-01-2041 | 2695-4 | | | 2695-4E | | 22-01-2047 | 2695-4R | | 22-01-3047 | 2695-4RP | | | 2695-4RPD | | 50-29-1559 | 2695-4RP-BK | |
| 22-01-2051 | 2695-5 | | | 2695-5E | | 22-01-2057 | 2695-5R | | 22-01-3057 | 2695-5RP | | 22-32-2051 | 2695-5RPD | | 50-29-1560 | 2695-5RP-BK | |
| 22-01-2061 | 2695-6 | | | 2695-6E | | 22-01-2067 | 2695-6R | | 22-01-3067 | 2695-6RP | | | 2695-6RPD | | 50-29-1561 | 2695-6RP-BK | |
| 22-01-2071 | 2695-7 | | 22-01-2072 | 2695-7E | | 22-01-2077 | 2695-7R | | 22-01-3077 | 2695-7RP | | | 2695-7RPD | | 50-29-1562 | 2695-7RP-BK | |
| 22-01-2081 | 2695-8 | | | 2695-8E | | 22-01-2087 | 2695-8R | | 22-01-3087 | 2695-8RP | | | 2695-8RPD | | 50-29-1563 | 2695-8RP-BK | |
| 22-01-2091 | 2695-9 | | | 2695-9E | | 22-01-2097 | 2695-9R | | 22-01-3097 | 2695-9RP | | | 2695-9RPD | | 50-29-1564 | 2695-9RP-BK | |
| 22-01-2101 | 2695-10 | | | 2695-10E | | 22-01-2107 | 2695-10R | | 22-01-3107 | 2695-10RP | | 22-32-2101 | 2695-10RPD | | 50-29-1565 | 2695-10RP-BK | |
| 22-01-2111 | 2695-11 | | | 2695-11E | | 22-01-2117 | 2695-11R | | 22-01-3117 | 2695-11RP | | | 2695-11RPD | | 50-29-1566 | 2695-11RP-BK | |
| 22-01-2121 | 2695-12 | | | 2695-12E | | 22-01-2127 | 2695-12R | | 22-01-3127 | 2695-12RP | | | 2695-12RPD | | 50-29-1567 | 2695-12RP-BK | |
| 22-01-2131 | 2695-13 | | | 2695-13E | | 22-01-2137 | 2695-13R | | 22-01-3137 | 2695-13RP | | | 2695-13RPD | | 50-29-1568 | 2695-13RP-BK | |
| 22-01-2141 | 2695-14 | | | 2695-14E | | 22-01-2147 | 2695-14R | | 22-01-3147 | 2695-14RP | | | 2695-14RPD | | 50-29-1569 | 2695-14RP-BK | |
| 22-01-2151 | 2695-15 | | | 2695-15E | | 22-01-2157 | 2695-15R | | 22-01-3157 | 2695-15RP | | | 2695-15RPD | | 50-29-1570 | 2695-15RP-BK | |
| 22-01-2161 | 2695-16 | | | 2695-16E | | 22-01-2167 | 2695-16R | | 22-01-3167 | 2695-16RP | | | 2695-16RPD | | 50-29-1571 | 2695-16RP-BK | |
| 22-01-2171 | 2695-17 | | | 2695-17E | | 22-01-2177 | 2695-17R | | 22-01-3177 | 2695-17RP | | | 2695-17RPD | | 50-29-1572 | 2695-17RP-BK | |
| 22-01-2181 | 2695-18 | | | 2695-18E | | 22-01-2187 | 2695-18R | | 22-01-3187 | 2695-18RP | | | 2695-18RPD | | 50-29-1573 | 2695-18RP-BK | |
| 22-01-2191 | 2695-19 | | | 2695-19E | | 22-01-2197 | 2695-19R | | 22-01-3197 | 2695-19RP | | | 2695-19RPD | | 50-29-1574 | 2695-19RP-BK | |
| 22-01-2201 | 2695-20 | | | 2695-20E | | 22-01-2207 | 2695-20R | | 22-01-3207 | 2695-20RP | | | 2695-20RPD | | 50-29-1575 | 2695-20RP-BK | |
| 22-01-2211 | 2695-21 | | | 2695-21E | | 22-01-2217 | 2695-21R | | 22-01-3217 | 2695-21RP | | | 2695-21RPD | | 50-29-1576 | 2695-21RP-BK | |
| 22-01-2221 | 2695-22 | | | 2695-22E | | 22-01-2227 | 2695-22R | | 22-01-3227 | 2695-22RP | | | 2695-22RPD | | 50-29-1577 | 2695-22RP-BK | |
| 22-01-2231 | 2695-23 | | | 2695-23E | | 22-01-2237 | 2695-23R | | 22-01-3237 | 2695-23RP | | | 2695-23RPD | | 50-29-1578 | 2695-23RP-BK | |
| 22-01-2241 | 2695-24 | | | 2695-24E | | 22-01-2247 | 2695-24R | | 22-01-3247 | 2695-24RP | | | 2695-24RPD | | 50-29-1579 | 2695-24RP-BK | |
| 22-01-2251 | 2695-25 | | | 2695-25E | | 22-01-2257 | 2695-25R | | 22-01-3257 | 2695-25RP | | | 2695-25RPD | | 50-29-1580 | 2695-25RP-BK | |
| 22-01-2261 | 2695-26 | | | 2695-26E | | 22-01-2267 | 2695-26R | | 22-01-3267 | 2695-26RP | | | 2695-26RPD | | 50-29-1581 | 2695-26RP-BK | |
| 22-01-2271 | 2695-27 | | | 2695-27E | | 22-01-2277 | 2695-27R | | 22-01-3277 | 2695-27RP | | | 2695-27RPD | | 50-29-1582 | 2695-27RP-BK | |
| 22-01-2281 | 2695-28 | | | 2695-28E | | 22-01-2287 | 2695-28R | | 22-01-3287 | 2695-28RP | | | 2695-28RPD | | 50-29-1583 | 2695-28RP-BK | |
| 22-01-2291 | 2695-29 | | | 2695-29E | | 22-01-2297 | 2695-29R | | | 2695-29RP | | | 2695-29RPD | | | | |
| | 2695-30 | | | 2695-30E | | | 2695-30R | | | 2695-30RP | | | 2695-30RPD | | | | |
| | 2695-31 | | | 2695-31E | | | 2695-31R | | | 2695-31RP | | | 2695-31RPD | | | | |
| | 2695-32 | | | 2695-32E | | | 2695-32R | | | 2695-32RP | | | 2695-32RPD | | | | |
| 22-01-2331 | 2695-33 | | | 2695-33E | | 22-01-2337 | 2695-33R | | | 2695-33RP | | | 2695-33RPD | | | | |
| | 2695-34 | | | 2695-34E | | | 2695-34R | | | 2695-34RP | | | 2695-34RPD | | | | |
| | 2695-35 | | | 2695-35E | | | 2695-35R | | | 2695-35RP | | | 2695-35RPD | | | | |
| | 2695-36 | | | 2695-36E | | | 2695-36R | | | 2695-36RP | | | 2695-36RPD | | | | |
| | 2695-37 | | | 2695-37E | | | 2695-37R | | | 2695-37RP | | | 2695-37RPD | | | | |
| | 2695-38 | | | 2695-38E | | | 2695-38R | | | 2695-38RP | | | 2695-38RPD | | | | |
| | 2695-39 | | | 2695-39E | | | 2695-39R | | | 2695-39RP | | | 2695-39RPD | | | | |
| | 2695-40 | | | 2695-40E | | | 2695-40R | | | 2695-40RP | | | 2695-40RPD | | | | |
| | | | | | | 22-01-2062 | 2695-06R-5 | 5 | 22-01-5102 | 2695-IORP-2 | 2 | | | | | | |
| | | | | | | | | | 22-01-5044 | 2695-4RP-3 | 3 | | | | | | |
| | | | | | | | | | 22-01-5103 | 2695-IORP-5 | 5 | | | | | | |
| | | | | | | | | | 22-01-5111 | 2695-IIRP-5 | 5 | | | | | | |
| | | | | | | | | | 22-01-5104 | 2695-IORP-9 | 9 | | | | | | |

| ADD P/N 22-01-2032 EC NO: UCP 2006-1024 DRAWN BY: JORWANDER 2005/11/01 CHECKED BY: CHEKLSCHMIDT 2005/11/02 APPROVED BY: APRILSMITH 2005/11/02 AMJ | QUALITY SYMBOLS | GENERAL TOLERANCES (UNLESS SPECIFIED) | DIMENSION STYLE | SCALE | DESIGN UNITS | THIRD ANGLE PROJECTION | | | | | | | | | | | | | | | | | | | | | | | |
|--|---------------------------|--|---------------------|-------|----------------------|------------------------|----------------------|--|----------------------|--|---------------------|--|-------|-----|------|---|----------|------|--------------|------------|------------|------|-------|------------|-------------|------|------|------------|---|
| | $\nabla=0$ $\nabla=0$ | <table border="1"> <tr><th>mm</th><th>INCH</th></tr> <tr><td>4 PLACES ± --- ± ---</td><td></td></tr> <tr><td>3 PLACES ± --- ± ---</td><td></td></tr> <tr><td>2 PLACES ± --- ± ---</td><td></td></tr> <tr><td>1 PLACE ± --- ± ---</td><td></td></tr> </table> | mm | INCH | 4 PLACES ± --- ± --- | | 3 PLACES ± --- ± --- | | 2 PLACES ± --- ± --- | | 1 PLACE ± --- ± --- | | MM/IN | --- | INCH | <table border="1"> <tr><th>DRAWN BY</th><th>DATE</th></tr> <tr><td>PEREZ-ARGUET</td><td>1988/02/25</td></tr> <tr><th>CHECKED BY</th><th>DATE</th></tr> <tr><td>PATEL</td><td>1988/02/25</td></tr> <tr><th>APPROVED BY</th><th>DATE</th></tr> <tr><td>LENZ</td><td>1988/02/25</td></tr> </table> | DRAWN BY | DATE | PEREZ-ARGUET | 1988/02/25 | CHECKED BY | DATE | PATEL | 1988/02/25 | APPROVED BY | DATE | LENZ | 1988/02/25 | TITLE (2.54)/100 HOUSING FOR KK CRIMP TYPE TERMINALS 2695 SERIES DRAWING |
| | mm | INCH | | | | | | | | | | | | | | | | | | | | | | | | | | | |
| | 4 PLACES ± --- ± --- | | | | | | | | | | | | | | | | | | | | | | | | | | | | |
| 3 PLACES ± --- ± --- | | | | | | | | | | | | | | | | | | | | | | | | | | | | | |
| 2 PLACES ± --- ± --- | | | | | | | | | | | | | | | | | | | | | | | | | | | | | |
| 1 PLACE ± --- ± --- | | | | | | | | | | | | | | | | | | | | | | | | | | | | | |
| DRAWN BY | DATE | | | | | | | | | | | | | | | | | | | | | | | | | | | | |
| PEREZ-ARGUET | 1988/02/25 | | | | | | | | | | | | | | | | | | | | | | | | | | | | |
| CHECKED BY | DATE | | | | | | | | | | | | | | | | | | | | | | | | | | | | |
| PATEL | 1988/02/25 | | | | | | | | | | | | | | | | | | | | | | | | | | | | |
| APPROVED BY | DATE | | | | | | | | | | | | | | | | | | | | | | | | | | | | |
| LENZ | 1988/02/25 | | | | | | | | | | | | | | | | | | | | | | | | | | | | |
| DRAFT WHERE APPLICABLE MUST REMAIN WITHIN DIMENSIONS | MATERIAL NO. SEE CHART | DOCUMENT NO. SD-2695 | SHEET NO. 2 OF 3 | | | | | | | | | | | | | | | | | | | | | | | | | | |
| THIS DRAWING CONTAINS INFORMATION THAT IS PROPRIETARY TO MOLEX INCORPORATED AND SHOULD NOT BE USED WITHOUT WRITTEN PERMISSION | | | | | | | | | | | | | | | | | | | | | | | | | | | | | |

| 2695-NC* | | | | | | | | | | | | | | | | | |
|----------|----------|-------|----------|----------|-------|----------|----------|-------|----------|----------|-------|----------|----------|-------|----------|----------|-------|
| PART NO. | ENG. NO. | VOIDS | PART NO. | ENG. NO. | VOIDS | PART NO. | ENG. NO. | VOIDS | PART NO. | ENG. NO. | VOIDS | PART NO. | ENG. NO. | VOIDS | PART NO. | ENG. NO. | VOIDS |
| N/A | 2695-1C | | | | | | | | | | | | | | | | |
| | 2695-2C | | | | | | | | | | | | | | | | |
| | 2695-3C | | | | | | | | | | | | | | | | |
| | 2695-4C | | | | | | | | | | | | | | | | |
| | 2695-5C | | | | | | | | | | | | | | | | |
| | 2695-6C | | | | | | | | | | | | | | | | |
| | 2695-7C | | | | | | | | | | | | | | | | |
| | 2695-8C | | | | | | | | | | | | | | | | |
| | 2695-9C | | | | | | | | | | | | | | | | |
| | 2695-10C | | | | | | | | | | | | | | | | |
| | 2695-11C | | | | | | | | | | | | | | | | |
| | 2695-12C | | | | | | | | | | | | | | | | |
| | 2695-13C | | | | | | | | | | | | | | | | |
| | 2695-14C | | | | | | | | | | | | | | | | |
| | 2695-15C | | | | | | | | | | | | | | | | |
| | 2695-16C | | | | | | | | | | | | | | | | |
| | 2695-17C | | | | | | | | | | | | | | | | |
| | 2695-18C | | | | | | | | | | | | | | | | |
| | 2695-19C | | | | | | | | | | | | | | | | |
| | 2695-20C | | | | | | | | | | | | | | | | |
| | 2695-21C | | | | | | | | | | | | | | | | |
| | 2695-22C | | | | | | | | | | | | | | | | |
| | 2695-23C | | | | | | | | | | | | | | | | |
| | 2695-24C | | | | | | | | | | | | | | | | |
| | 2695-25C | | | | | | | | | | | | | | | | |
| | 2695-26C | | | | | | | | | | | | | | | | |
| | 2695-27C | | | | | | | | | | | | | | | | |
| | 2695-28C | | | | | | | | | | | | | | | | |
| | 2695-29C | | | | | | | | | | | | | | | | |
| | 2695-30C | | | | | | | | | | | | | | | | |
| | 2695-31C | | | | | | | | | | | | | | | | |
| | 2695-32C | | | | | | | | | | | | | | | | |
| | 2695-33C | | | | | | | | | | | | | | | | |
| | 2695-34C | | | | | | | | | | | | | | | | |
| | 2695-35C | | | | | | | | | | | | | | | | |
| | 2695-36C | | | | | | | | | | | | | | | | |
| | 2695-37C | | | | | | | | | | | | | | | | |
| | 2695-38C | | | | | | | | | | | | | | | | |
| | 2695-39C | | | | | | | | | | | | | | | | |
| | 2695-40C | | | | | | | | | | | | | | | | |

| | | | | | | | | | |
|---|--------------------------------------|---|------------|---------------------------------|--------------------|---|-------------------------|------------------------|--|
| UPDATE TITLE BLOCK DEC NO: UCP/2006-10/24 DRAWN BY: 2005/11/01 CHECKED BY: 2005/11/02 APPROVED BY: 2005/11/02 AMS | QUALITY SYMBOLS ▽=0 ▽=0 | GENERAL TOLERANCES (UNLESS SPECIFIED) | | DIMENSION STYLE MM/IN | | SCALE --- | DESIGN UNITS INCH | THIRD ANGLE PROJECTION | |
| | | 4 PLACES ± --- ± --- 3 PLACES ± --- ± --- 2 PLACES ± --- ± --- 1 PLACE ± --- ± --- | mm INCH | DRAWN BY SAMIEC | DATE 1989/10/30 | TITLE (2.54)/100 HOUSING FOR KK CRIMP TYPE TERMINALS 2695 SERIES DRAWING | | | |
| | | ANGULAR ±1/2° | | CHECKED BY PATEL | DATE 1989/10/30 | MOLEX INCORPORATED | | | |
| | | DRAFT WHERE APPLICABLE MUST REMAIN WITHIN DIMENSIONS | | APPROVED BY LENZ | DATE 1989/10/30 | MATERIAL NO. SEE CHART | DOCUMENT NO. SD-2695 | SHEET NO. 3 OF 3 | |