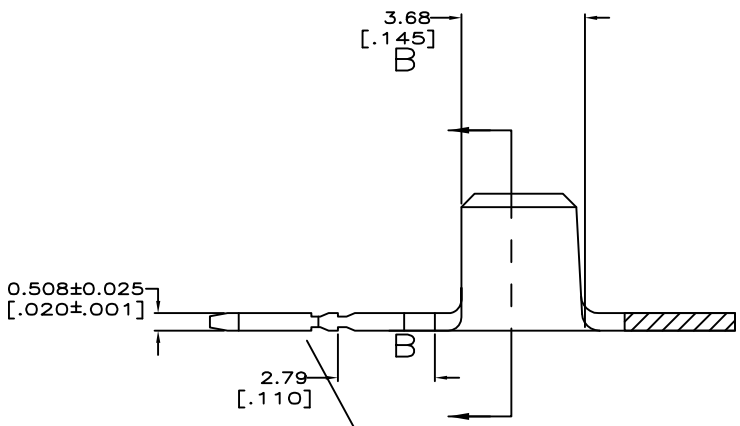
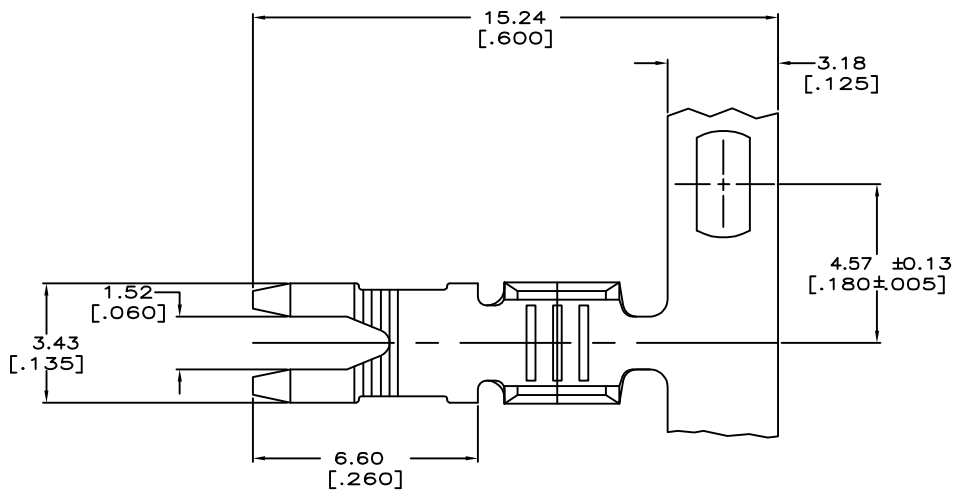
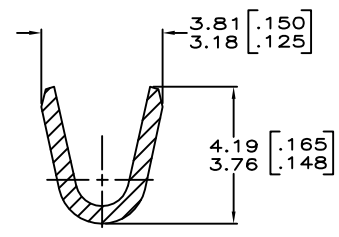


THIS DRAWING IS UNPUBLISHED. RELEASED FOR PUBLICATION
 © COPYRIGHT - By - ALL RIGHTS RESERVED.

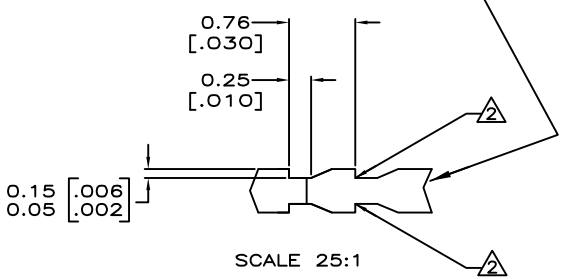
LOC		DST		REVISIONS			
P	LTR	DESCRIPTION	DATE	DRN	APRD		
B1		ECR-13-017177	05NOV13	PKS	RRP		



1 CONTINUOUS STRIP ON REELS
 FOR OPTIMUM RETENTION IN POKE-IN TYPE MAG-MATE TERMINALS, ONE OF THE SERRATIONS, AS SHOWN, MUST BE ENGAGED WITH THE EDGE OF THE LEAF



SECTION B-B



0.8-2.0 mm ² [18 - 14] AWG WIRE RANGE	63775-1
--	---------

THIS DRAWING IS A CONTROLLED DOCUMENT.		DRN: MICHAEL S. FEJER 08/FEB/04	TE Connectivity	
DIMENSIONS: INCHES		CHK: JEFF R. RUTH 09/FEB/04	NAME	
TOLERANCES UNLESS OTHERWISE SPECIFIED: 0 PLC ± - 1 PLC ± - 2 PLC ± 0.25 [.010] 3 PLC ± - 4 PLC ± - ANGLES ± -		PRODUCT SPEC	TAB, POKE-IN, MAG-MATE™	
MATERIAL: BRASS		FINISH: TIN PLATE	APPLICATION SPEC: 114-2050	RESTRICTED TO: -
SCALE: 25:1		SIZE: A2	CAGE CODE: 00779	DRAWING NO: 63775
CUSTOMER DRAWING		SCALE: 10:1	SHEET: 1 of 1	REV: B1