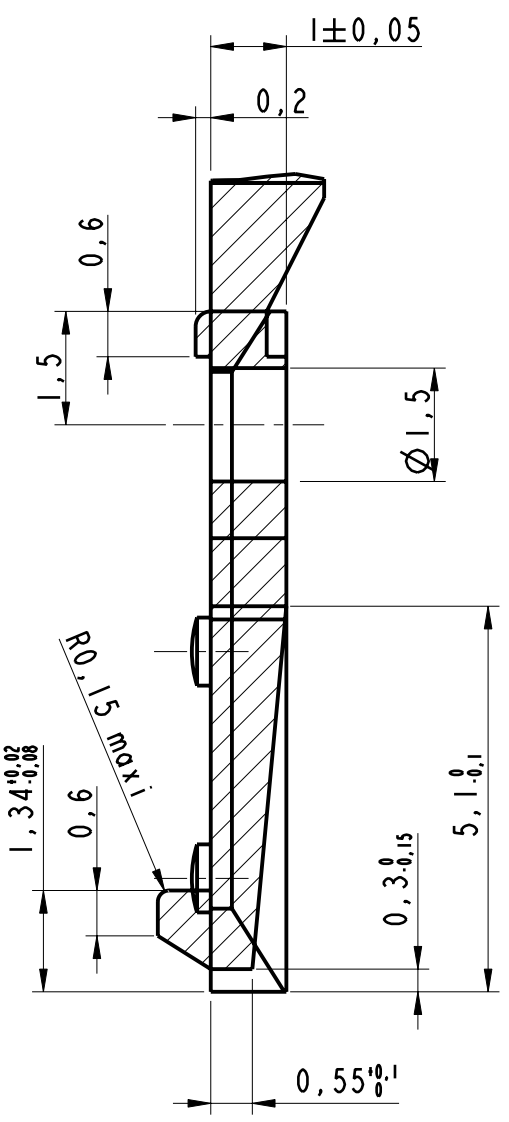
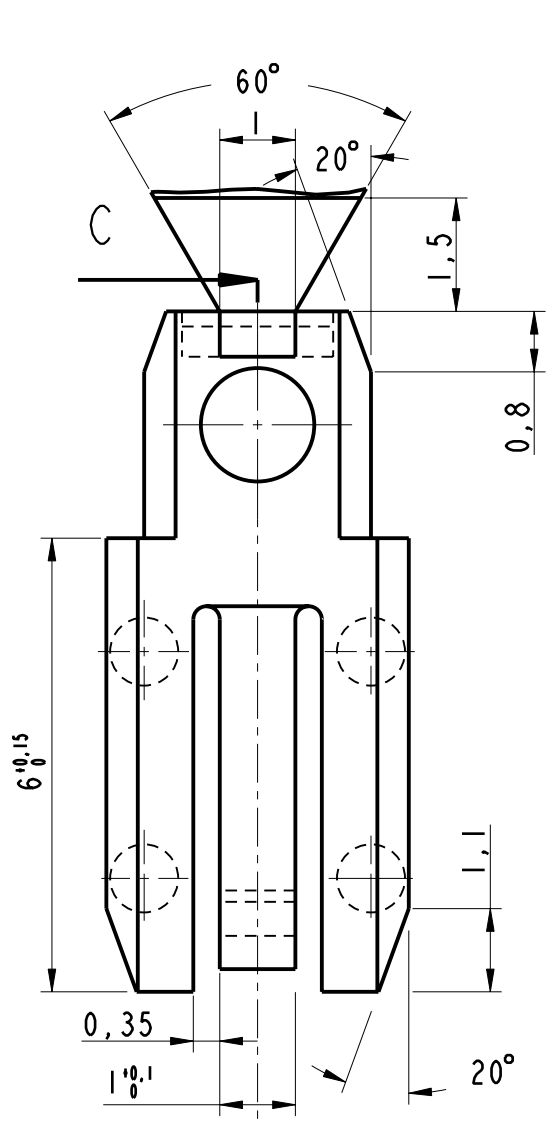
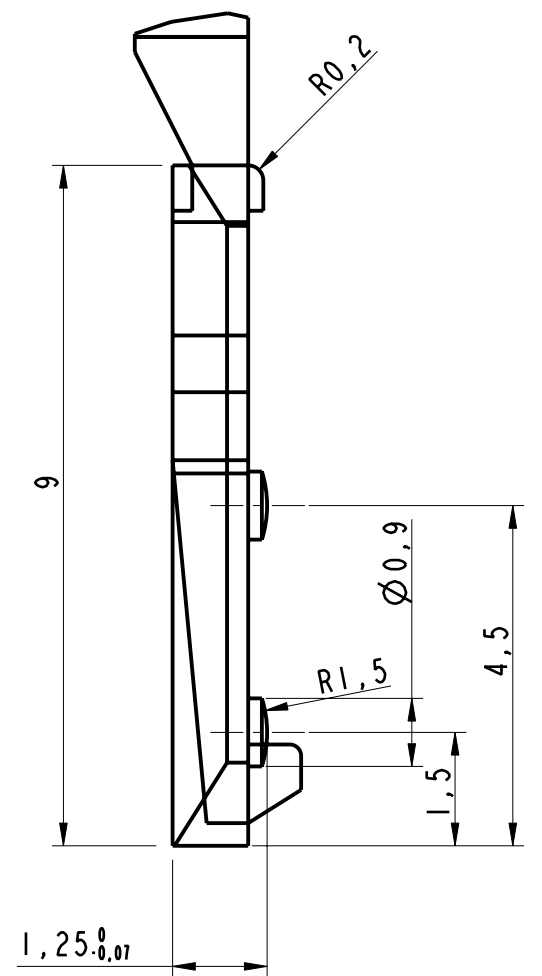


Rep. / Plan	Cotes de qualif. [NOTA 3]	Cotes d'Etude



EXIGENCES ETUDE
GARANTIE DES COTES EN SERIE
 ① Garantie du mini et du maxi de la cote
 ② Garantie du maxi de la cote
 ③ Garantie du mini de la cote

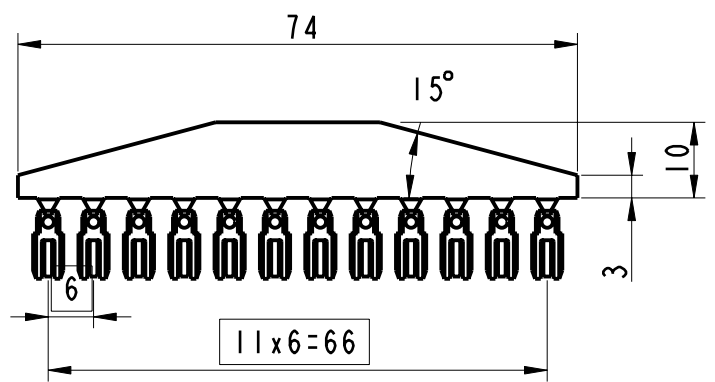
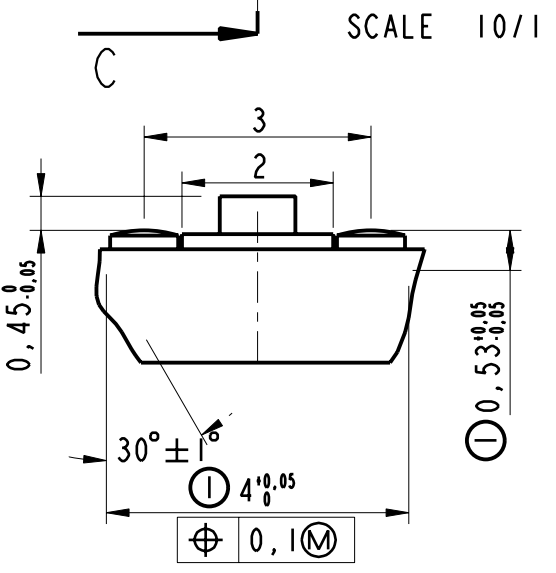
A : Cote ou exigence pour conception de machine de montage
 Ex. : ①A, ②A ou ③A

NOTA :
 1. L'outillage sera qualifie sur les cotes et tolerances du plan.)
 2. Sous un effort de 100 g a la premiere introduction du calibre.)
 3. lors d'un renouvellement ou d'une renovation de l'outillage, seules les cotes d'etude seront prises en compte.)

MATIERE
 VALOX 420 SED 30% de rebroye maxi

NOTE:RoHS INFORMATION
 -The "LF" product meets European union Directives and other country regulations as described in GS-22-008.
 -The product is not intended to be exposed to a manufacturing solder process.
 -Packaging spec: see GS-14-920.

PART-NUMBER
 8609-542LF



SCALE 1/1

rev	ecn no	dr	date
A	LS05-0086	MPE	2005-10-17
B	LS06-0208	LGO	2006-12-12
-	-	-	-
-	-	-	-
-	-	-	-

www.fciconnect.com		surface - ✓	tolerance std	projection	mm
		ISO 1302	ISO 406 ISO 1101		↔
TOLERANCES UNLESS OTHERWISE SPECIFIED					
Dr	ABHILASH	2005-10-17	ANGULAR	0.X ±0.3	size A3
Eng	TARON	2005-10-17	LINEAR	0.XX ±0.1	Scale 10/1
Chr	LEGARE	2005-10-17	0° ±2°	0.XXX ±0.05	ECN LS06-0208
Appr	LEGARE	2005-10-17	Product family	DIN	Spec ref
		Title PIONS pour barrettes de codage		Rev. B	
8609		catalog no		dwg no C-8609-1183	
				CUSTOMER	
				sheet 1 of 1	

Copyright FCI.