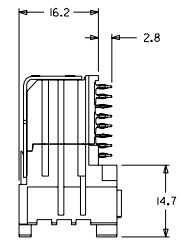
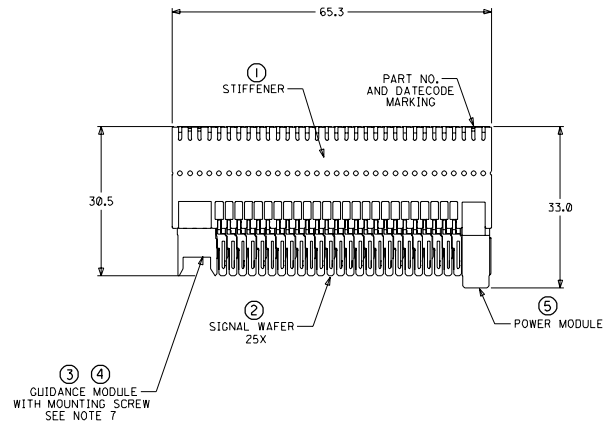
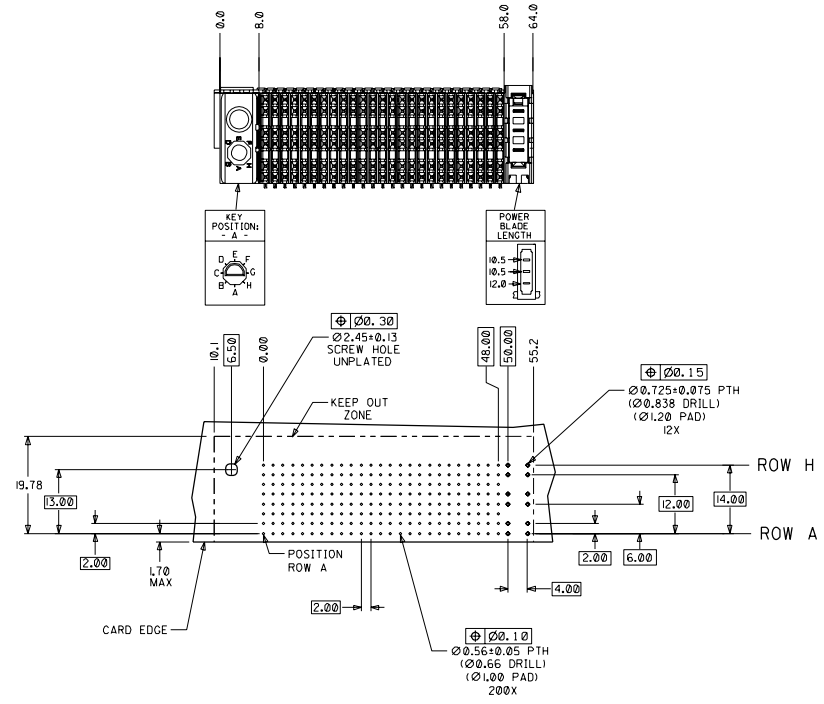


CUSTOMER: GENERAL MARKET



- NOTES: (UNLESS OTHERWISE SPECIFIED)
- MATERIALS: HOUSING - LIQUID CRYSTAL POLYMER (LCP), GLASS-FILLED, UL94V-0, BLACK.  
TERMINALS - HIGH PERFORMANCE COPPER ALLOY.  
STIFFENER - STAINLESS STEEL.
  - FINISH: SELECTIVE GOLD (Au) IN CONTACT AREA, 0.00076mm MINIMUM THICKNESS; SELECTIVE TIN/LEAD (Sn/Pb) ON PCB TAILS, NICKEL (Ni) OVERALL.
  - REFER TO MOLEX PRODUCT SPECIFICATION PS-74031-999 FOR PERFORMANCE SPECIFICATIONS.
  - REFER TO MOLEX DOCUMENT SD-74681-002 FOR ADDITIONAL DETAIL ON THE HSD SIGNAL WAFER.
  - REFER TO MOLEX DOCUMENT SD-74037-006 FOR ADDITIONAL DETAIL ON THE GUIDANCE MODULE.
  - REFER TO MOLEX DOCUMENT SD-74026-002 FOR ADDITIONAL DETAIL ON THE POWER MODULE.
  - MOUNTING SCREWS WILL BE BAGGED WITH EACH CONNECTOR.
  - PARTS ARE PACKAGED IN TUBES PER PK-70873-504L.
  - PARTS ARE PACKAGED IN TUBES PER PK-70873-504L.



DAUGHTERCARD HOLE PATTERN (CONNECTOR SIDE)

ITEM	PART NUMBER	DESCRIPTION	QTY
1	74046-0065	STIFFENER	1
2	74681-0001	HSD8 WAFER	25
3	74037-8001	POLARIZING/GUIDE MODULE	1
4	73726-0000	GUIDE MODULE MNTG SCREW	1
5	74026-8433	POWER MODULE	1

INITIAL RELEASE EC NO. UDT2002-0949 DRWN: ATP 02/01/16 CHKR: LAURX 02/01/16 APPR: BIXLER 02/01/16	QUALITY SYMBOLS	GENERAL TOLERANCES (UNLESS SPECIFIED)	SCALE: 2:1	DESIGN UNITS: mm <input checked="" type="checkbox"/> INCH <input type="checkbox"/>	DIMENSIONS: mm <input type="checkbox"/> INCH <input type="checkbox"/> mm <input checked="" type="checkbox"/> ONLY	SHT	REV	
	MAJOR	mm INCH	DRAWN BY & DATE	TITLE: 8 ROW HSD DAUGHTERCARD ASSEMBLY SALES DRAWING				
	CRITICAL	4 PLACES ±0. -- 2. --	ATP 02/01/16	MOLEX INCORPORATED				
		3 PLACES ±0. -- 2. --	CHECKED BY & DATE	MATERIAL NO. SD-74680-083 DRAWING NO. SD-74680-083 SHEET NO. 1 OF 1				
	2 PLACES ±0. -- 2. --	LAURX 02/01/16	APPROVED BY & DATE					
	1 PLACE ±0. -- 2. --	BIXLER 02/01/16	CAD FILENAME					
	ANGULAR: ± 2°		DRAFT WHERE APPLICABLE MUST REMAIN WITHIN DIMENSIONS					
			THIS DRAWING CONTAINS INFORMATION THAT IS PROPRIETARY TO MOLEX INCORPORATED AND SHOULD NOT BE USED WITHOUT WRITTEN PERMISSION.					